

V&V Reference Report

L2 ASCDS Version : 8.4.4

Observation 58295 - L2 Version 2
Chandra X-Ray Center

L2 Processing Date : Apr 28 2012

Contents

1	Front	2
2	OBI	3
2.1	OBI	3
2.1.1	Images	3
2.1.2	Bias	3
2.1.3	Parameters	4
2.1.4	Events	4
2.2	Compared Parameters	5
2.3	Star Slots	6
2.4	FID Slots	6
A	Summary	7
A.1	Status	7
A.2	Comments	7

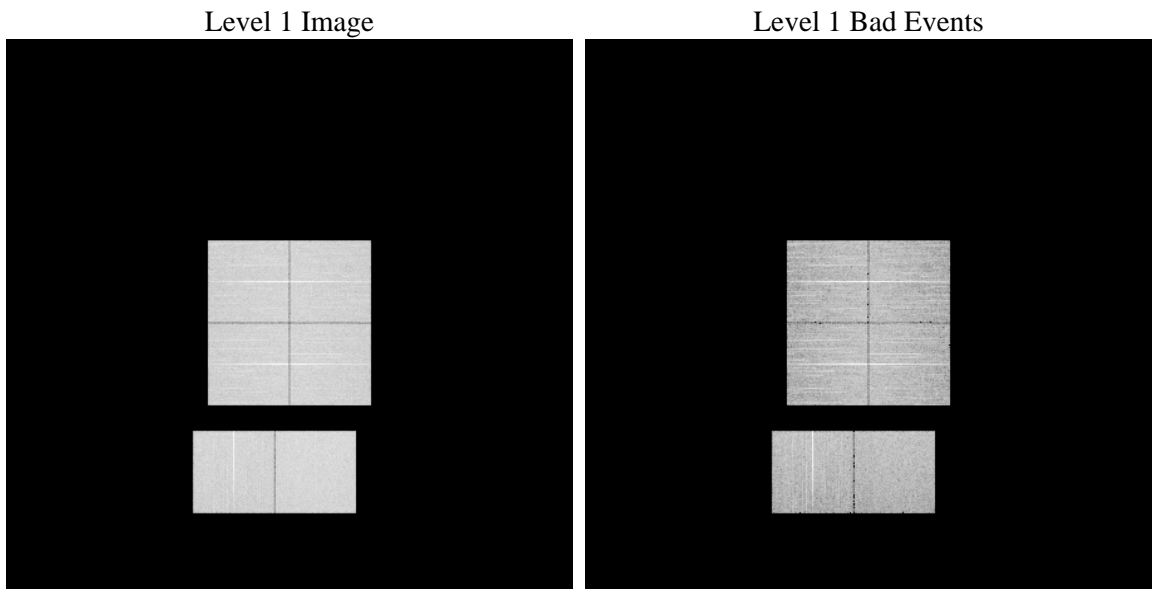
1 Front

seq_num	 	Sequence number
obs_id	58295	Observation id
title	ACIS-012367 diagnostics	Proposal title
observer	CHANDRA engineering request/realtime commanding	Principal investig
object	 	Source name
dtcycle	0	
cycle	P	events from which exps? Prim/Second/Both
ra_targ	0.0	Observer's specified target RA [deg]
dec_targ	0.0	Observer's specified target Dec [deg]
ra_nom	327.51407422712	Nominal RA [deg]
dec_nom	-42.473190529395	Nominal Dec [deg]
roll_nom	35.886964467659	Nominal Roll [deg]
revision	2	Processing version of data
ontime	8155.4658359885	Sum of GTIs [s]
livetime	8052.1964169413	Livetime [s]
ontime0	8155.4247959852	Sum of GTIs [s]
ontime1	8155.3837559819	Sum of GTIs [s]
ontime2	8155.3427159786	Sum of GTIs [s]
ontime3	8155.5068759918	Sum of GTIs [s]
ontime6	8155.3016759753	Sum of GTIs [s]
ontime7	8155.4658359885	Sum of GTIs [s]
l2events	700101	Number of level 2 events

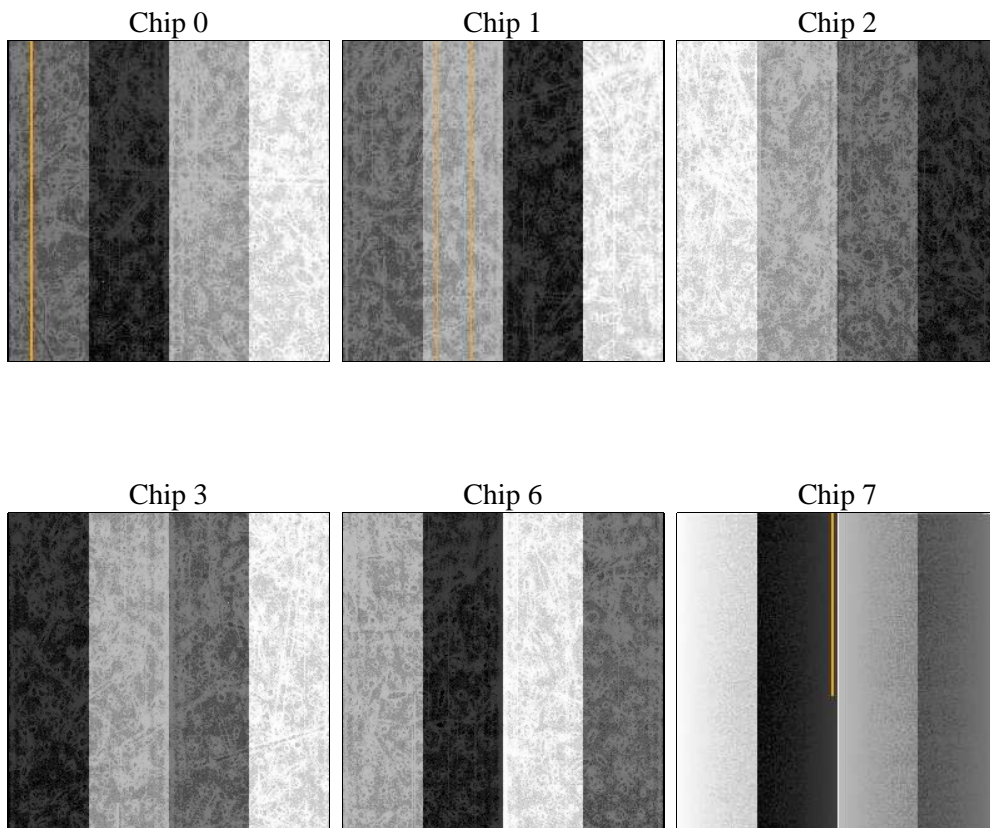
2 OBI

2.1 OBI

2.1.1 Images



2.1.2 Bias



2.1.3 Parameters

obi_num	0	Obi number	sched_exp_time	0.0	[s] Scheduled observation exposure time
ascdsver	8.4.4	Processing system revision	ontime	8155.4658359885	Sum of GTIs [s]
caldsver	4.4.9	 	ontime0	8155.4247959852	Sum of GTIs [s]
date	2012-04-29T02:17:01	Date and time of file creation	ontime1	8155.3837559819	Sum of GTIs [s]
revision	2	Processing version of data	ontime2	8155.3427159786	Sum of GTIs [s]
			ontime3	8155.5068759918	Sum of GTIs [s]
			ontime6	8155.3016759753	Sum of GTIs [s]
			ontime7	8155.4658359885	Sum of GTIs [s]
			l1events	1178979	Number of level 1 events

2.1.4 Events

	ccd 0	ccd 1	ccd 2	ccd 3	ccd 6	ccd 7		ccd 0	ccd 1	ccd 2	ccd 3	ccd 6	ccd 7
level 1 events	190418	188515	194611	194743	194727	215965	grade 0 events	63976	63597	65774	66506	65004	30829
rejected events	74382	71015	77884	76677	73800	66783		33%	33%	33%	34%	33%	14%
rejected %	39%	37%	40%	39%	37%	30%	grade 1 events	462	347	500	520	363	151
								0%	0%	0%	0%	0%	0%
							grade 2 events	20685	22176	19561	20261	21572	33252
								10%	11%	10%	10%	11%	15%
							grade 3 events	7743	7605	8024	7765	7785	14212
								4%	4%	4%	3%	3%	6%
							grade 4 events	7572	7446	7938	7997	7773	14026
								3%	3%	4%	4%	3%	6%
							grade 5 events	3803	3930	3633	4240	4155	10292
								1%	2%	1%	2%	2%	4%
							grade 6 events	17804	18325	17030	17202	20416	58877
								9%	9%	8%	8%	10%	27%
							grade 7 events	68373	65089	72151	70252	67659	54326
								35%	34%	37%	36%	34%	25%

2.2 Compared Parameters

Parameter	Planned	Actual	Parameter	Planned	Actual
Instrument	ACIS	ACIS	Obspar format version number	7	7
Detector	ACIS-012367	ACIS-012367	Obspar file type	PREDICTED	ACTUAL
Grating	NONE	NONE	Obspar update status	NONE	UPDATED
Data mode	FAINT	FAINT	On-chip summing requested	N	N
Observation mode	SECONDARY	SECONDARY	Subarray requested	NONE	NONE
[deg] Pointing RA	0	327.514074227116	Alternating exposures requested	N	N
[deg] Pointing Dec	0	-42.47319052939467	[s] Primary exposure time	3.2	3.2
[deg] Pointing Roll	0.0	35.88696446765906			
[mm] SIM focus pos	-0.782348	-0.7809083437167272			
[mm] SIM defocus	0	0.7524282956875696			
[mm] SIM translation stage pos	-233.592463	250.466033080201			
[mm] SIM translation stage offset	0	-0.01005468664627074			
[s] Observation start time (MET)	302298432.027438	302298431.00243			
Observation start date	2007-07-31T19:47:12	2007-07-31T19:47:11			
[s] Observation end time (MET)	302309998.127993	302309997.10299			
Observation end date	2007-07-31T22:59:58	2007-07-31T22:59:57			
Read mode	TIMED	TIMED			

2.3 Star Slots

2.4 FID Slots

A Summary

A.1 Status

V&V Scientist	Jen Lauer
V&V Date (YYYY-MM-DD)	2012.05.01
V&V Edition	1
V&V Disposition and Status	OK
V&V Charge Time	8.1554658359885

A.2 Comments