

V&V Reference Report

L2 ASCDS Version : 8.4.4

Observation 58265 - L2 Version 2
Chandra X-Ray Center

L2 Processing Date : Apr 29 2012

Contents

1	Front	2
2	OBI	3
2.1	OBI	3
2.1.1	Images	3
2.1.2	Bias	3
2.1.3	Parameters	4
2.1.4	Events	4
2.2	Compared Parameters	5
2.3	Star Slots	6
2.4	FID Slots	6
A	Summary	7
A.1	Status	7
A.2	Comments	7

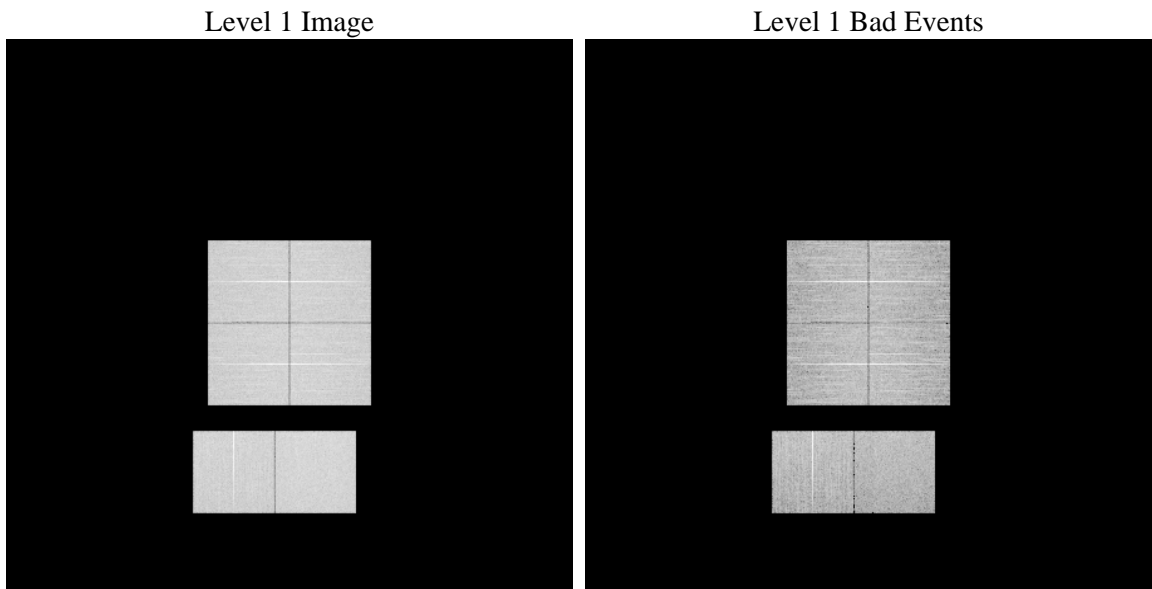
1 Front

seq_num	 	Sequence number
obs_id	58265	Observation id
title	ACIS-012367 diagnostics	Proposal title
observer	CHANDRA engineering request/realtime commanding	Principal investig
object	 	Source name
dtcycle	0	
cycle	P	events from which exps? Prim/Second/Both
ra_targ	0.0	Observer's specified target RA [deg]
dec_targ	0.0	Observer's specified target Dec [deg]
ra_nom	357.08311133663	Nominal RA [deg]
dec_nom	-16.476294869027	Nominal Dec [deg]
roll_nom	91.4978843345	Nominal Roll [deg]
revision	2	Processing version of data
ontime	8163.1999696493	Sum of GTIs [s]
livetime	8059.8326163447	Livetime [s]
ontime0	8163.1999696493	Sum of GTIs [s]
ontime1	8163.1999696493	Sum of GTIs [s]
ontime2	8163.1999696493	Sum of GTIs [s]
ontime3	8163.1999696493	Sum of GTIs [s]
ontime6	8163.1999696493	Sum of GTIs [s]
ontime7	8163.1999696493	Sum of GTIs [s]
l2events	691609	Number of level 2 events

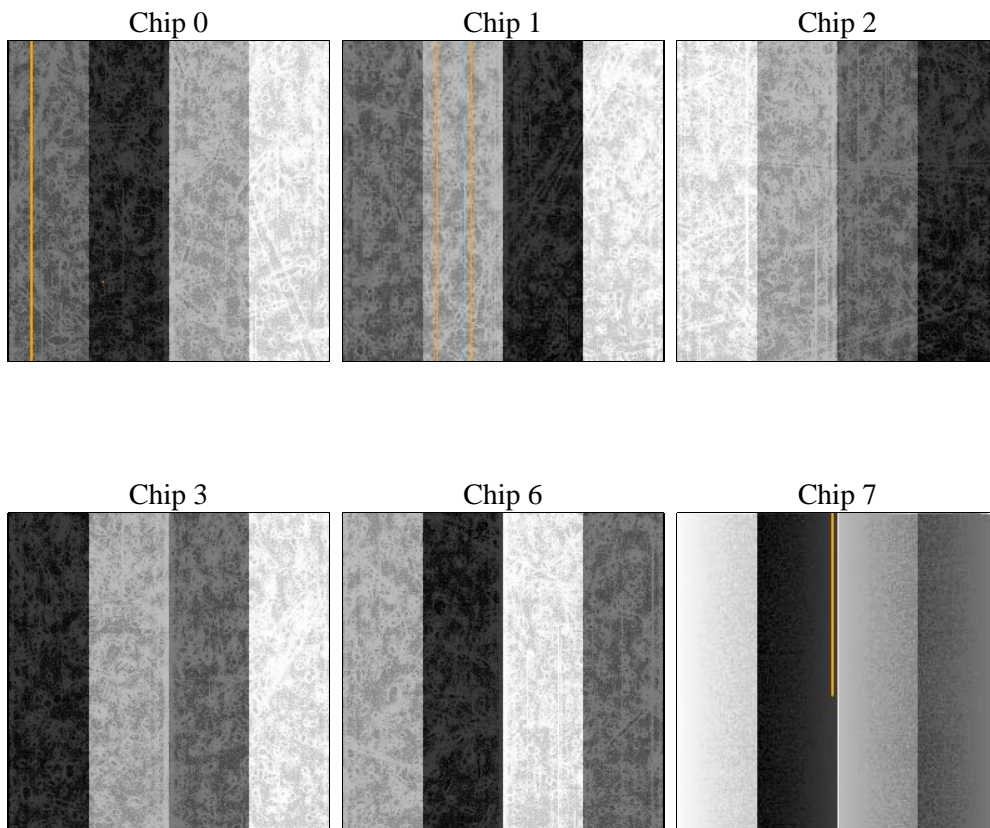
2 OBI

2.1 OBI

2.1.1 Images



2.1.2 Bias



2.1.3 Parameters

obi_num	0	Obi number	sched_exp_time	0.0	[s] Scheduled observation exposure time
ascdsver	8.4.4	Processing system revision	ontime	8163.1999696493	Sum of GTIs [s]
caldsver	4.4.9	 	ontime0	8163.1999696493	Sum of GTIs [s]
date	2012-04-29T14:33:56	Date and time of file creation	ontime1	8163.1999696493	Sum of GTIs [s]
revision	2	Processing version of data	ontime2	8163.1999696493	Sum of GTIs [s]
			ontime3	8163.1999696493	Sum of GTIs [s]
			ontime6	8163.1999696493	Sum of GTIs [s]
			ontime7	8163.1999696493	Sum of GTIs [s]
			l1events	1193290	Number of level 1 events

2.1.4 Events

	ccd 0	ccd 1	ccd 2	ccd 3	ccd 6	ccd 7		ccd 0	ccd 1	ccd 2	ccd 3	ccd 6	ccd 7
level 1 events	191697	190929	195257	198446	200063	216898	grade 0 events	62864	60821	64749	65523	62287	30090
rejected events	76863	75612	80478	82547	80746	67951		32%	31%	33%	33%	31%	13%
rejected %	40%	39%	41%	41%	40%	31%	grade 1 events	351	361	481	488	341	167
								0%	0%	0%	0%	0%	0%
							grade 2 events	20610	23037	19004	19367	23262	33608
								10%	12%	9%	9%	11%	15%
							grade 3 events	7672	7351	7872	7696	7300	13654
								4%	3%	4%	3%	3%	6%
							grade 4 events	7481	7307	7730	7848	7305	13555
								3%	3%	3%	3%	3%	6%
							grade 5 events	3848	3975	3644	4248	4107	10166
								2%	2%	1%	2%	2%	4%
							grade 6 events	17688	18361	16965	17075	20846	59970
								9%	9%	8%	8%	10%	27%
							grade 7 events	71183	69716	74812	76201	74615	55688
								37%	36%	38%	38%	37%	25%

2.2 Compared Parameters

Parameter	Planned	Actual
Instrument	ACIS	ACIS
Detector	ACIS-012367	ACIS-012367
Grating	NONE	NONE
Data mode	FAINT	FAINT
Observation mode	SECONDARY	SECONDARY
[deg] Pointing RA	0	357.0831113366319
[deg] Pointing Dec	0	-16.47629486902663
[deg] Pointing Roll	0.0	91.49788433450028
[mm] SIM focus pos	-0.782348	-0.7809083437167272
[mm] SIM defocus	0	0.7524282956875696
[mm] SIM translation stage pos	-233.592463	250.4635187648994
[mm] SIM translation stage offset	0	-0.007540371344731511
[s] Observation start time (MET)	303432252.231843	303432251.20685
Observation start date	2007-08-13T22:44:12	2007-08-13T22:44:11
[s] Observation end time (MET)	303454794.032925	303454793.00793
Observation end date	2007-08-14T04:59:54	2007-08-14T04:59:53
Read mode	TIMED	TIMED

Parameter	Planned	Actual
Obspar format version number	7	7
Obspar file type	PREDICTED	ACTUAL
Obspar update status	NONE	UPDATED
On-chip summing requested	N	N
Subarray requested	NONE	NONE
Alternating exposures requested	N	N
[s] Primary exposure time	3.2	3.2

2.3 Star Slots

2.4 FID Slots

A Summary

A.1 Status

V&V Scientist	Jen Lauer
V&V Date (YYYY-MM-DD)	2012.05.02
V&V Edition	1
V&V Disposition and Status	OK
V&V Charge Time	8.1631999696493

A.2 Comments