

# V&V Reference Report

## L2 ASCDS Version : 8.4.4

Observation 58242 - L2 Version 2  
Chandra X-Ray Center

L2 Processing Date : Apr 30 2012

## Contents

<b>1</b>	<b>Front</b>	<b>2</b>
<b>2</b>	<b>OBI</b>	<b>3</b>
2.1	OBI . . . . .	3
2.1.1	Images . . . . .	3
2.1.2	Bias . . . . .	3
2.1.3	Parameters . . . . .	4
2.1.4	Events . . . . .	4
2.2	Compared Parameters . . . . .	5
2.3	Star Slots . . . . .	6
2.4	FID Slots . . . . .	6
<b>A</b>	<b>Summary</b>	<b>7</b>
A.1	Status . . . . .	7
A.2	Comments . . . . .	7

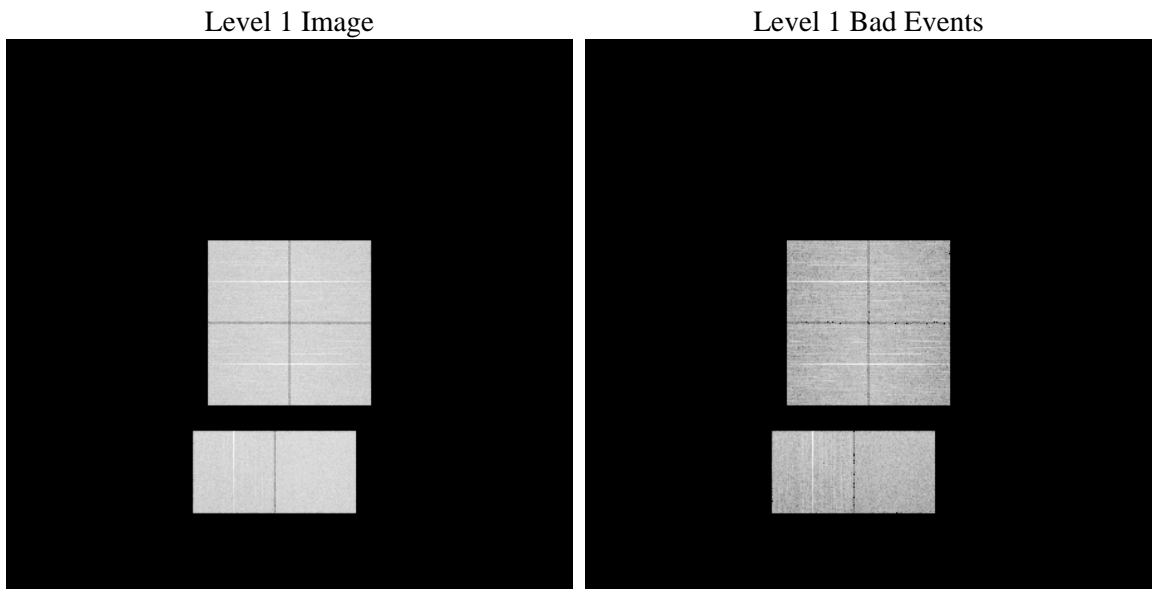
# 1 Front

seq_num	&#160	Sequence number
obs_id	58242	Observation id
title	ACIS-012367 diagnostics	Proposal title
observer	CHANDRA engineering request/realtime commanding	Principal investig
object	&#160	Source name
dtcycle	0	&#160
cycle	P	events from which exps? Prim/Second/Both
ra_targ	0.0	Observer's specified target RA [deg]
dec_targ	0.0	Observer's specified target Dec [deg]
ra_nom	342.02889562582	Nominal RA [deg]
dec_nom	-37.982502318668	Nominal Dec [deg]
roll_nom	4.687429135892	Nominal Roll [deg]
revision	2	Processing version of data
ontime	7794.6220649481	Sum of GTIs [s]
livetime	7695.9218670038	Livetime [s]
ontime0	7791.3811842799	Sum of GTIs [s]
ontime1	7794.6220450401	Sum of GTIs [s]
ontime2	7794.6220649481	Sum of GTIs [s]
ontime3	7794.6220649481	Sum of GTIs [s]
ontime6	7796.7298285365	Sum of GTIs [s]
ontime7	7794.6220649481	Sum of GTIs [s]
l2events	655988	Number of level 2 events

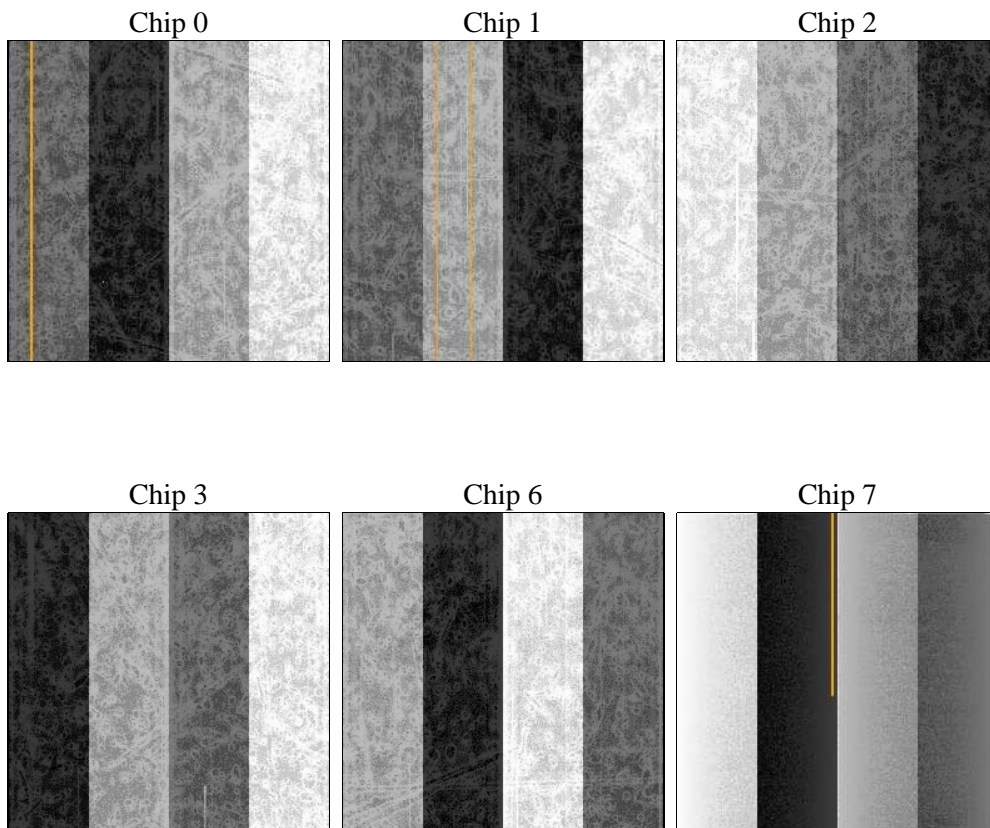
## 2 OBI

### 2.1 OBI

#### 2.1.1 Images



#### 2.1.2 Bias



### 2.1.3 Parameters

obi_num	0	Obi number	sched_exp_time	0.0	[s] Scheduled observation exposure time
ascdsver	8.4.4	Processing system revision	ontime	7794.6220649481	Sum of GTIs [s]
caldsver	4.4.9	&#160	ontime0	7791.3811842799	Sum of GTIs [s]
date	2012-04-30T13:36:25	Date and time of file creation	ontime1	7794.6220450401	Sum of GTIs [s]
revision	2	Processing version of data	ontime2	7794.6220649481	Sum of GTIs [s]
			ontime3	7794.6220649481	Sum of GTIs [s]
			ontime6	7796.7298285365	Sum of GTIs [s]
			ontime7	7794.6220649481	Sum of GTIs [s]
			l1events	1091261	Number of level 1 events

### 2.1.4 Events

	ccd 0	ccd 1	ccd 2	ccd 3	ccd 6	ccd 7		ccd 0	ccd 1	ccd 2	ccd 3	ccd 6	ccd 7
level 1 events	174118	174588	178336	177880	183633	202706	grade 0 events	58941	58197	60638	60247	60575	29719
rejected events	65566	65438	68990	68184	69957	61299		33%	33%	34%	33%	32%	14%
rejected %	37%	37%	38%	38%	38%	30%	grade 1 events	453	350	490	453	363	159
								0%	0%	0%	0%	0%	0%
							grade 2 events	19210	19848	18609	19112	19994	30768
								11%	11%	10%	10%	10%	15%
							grade 3 events	7096	7147	7356	7478	7208	13700
								4%	4%	4%	4%	3%	6%
							grade 4 events	7153	7210	7139	7275	7272	13483
								4%	4%	4%	4%	3%	6%
							grade 5 events	3679	3788	3470	4144	4132	10423
								2%	2%	1%	2%	2%	5%
							grade 6 events	16152	16748	15604	15584	18627	53737
								9%	9%	8%	8%	10%	26%
							grade 7 events	61434	61300	65030	63587	65462	50717
								35%	35%	36%	35%	35%	25%

## 2.2 Compared Parameters

Parameter	Planned	Actual	Parameter	Planned	Actual
Instrument	ACIS	ACIS	Obspar format version number	7	7
Detector	ACIS-012367	ACIS-012367	Obspar file type	PREDICTED	ACTUAL
Grating	NONE	NONE	Obspar update status	NONE	UPDATED
Data mode	FAINT	FAINT	On-chip summing requested	N	N
Observation mode	SECONDARY	SECONDARY	Subarray requested	NONE	NONE
[deg] Pointing RA	0	342.0288956258217	Alternating exposures requested	N	N
[deg] Pointing Dec	0	-37.98250231866761	[s] Primary exposure time	3.2	3.2
[deg] Pointing Roll	0.0	4.687429135891958			
[mm] SIM focus pos	-0.782348	-0.6828225247311905			
[mm] SIM defocus	0	0.8505141146731063			
[mm] SIM translation stage pos	-233.592463	250.466033080201			
[mm] SIM translation stage offset	0	-0.01005468664627074			
[s] Observation start time (MET)	304990703.306726	304990702.28172			
Observation start date	2007-08-31T23:38:23	2007-08-31T23:38:22			
[s] Observation end time (MET)	305038939.809045	305038938.78404			
Observation end date	2007-09-01T13:02:20	2007-09-01T13:02:18			
Read mode	TIMED	TIMED			

## **2.3 Star Slots**

## **2.4 FID Slots**

## A Summary

### A.1 Status

V&V Scientist	Jen Lauer
V&V Date (YYYY-MM-DD)	2012.05.02
V&V Edition	1
V&V Disposition and Status	OK
V&V Charge Time	7.7946220649481

### A.2 Comments