

V&V Reference Report

L2 ASCDS Version : 8.4.4

Observation 58150 - L2 Version 2
Chandra X-Ray Center

L2 Processing Date : May 3 2012

Contents

1	Front	2
2	OBI	3
2.1	OBI	3
2.1.1	Images	3
2.1.2	Bias	3
2.1.3	Parameters	4
2.1.4	Events	4
2.2	Compared Parameters	5
2.3	Star Slots	6
2.4	FID Slots	6
A	Summary	7
A.1	Status	7
A.2	Comments	7

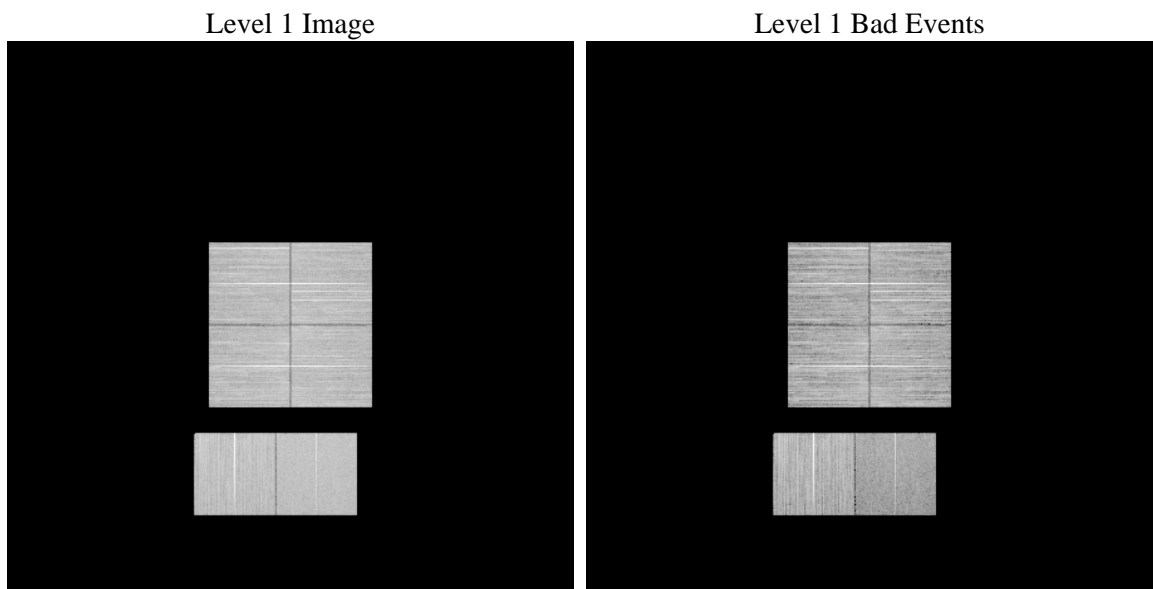
1 Front

seq_num	 	Sequence number
obs_id	58150	Observation id
title	ACIS-012367 diagnostics	Proposal title
observer	CHANDRA engineering request/realtime commanding	Principal investig
object	 	Source name
dtcycle	0	
cycle	P	events from which exps? Prim/Second/Both
ra_targ	0.0	Observer's specified target RA [deg]
dec_targ	0.0	Observer's specified target Dec [deg]
ra_nom	48.963798175795	Nominal RA [deg]
dec_nom	38.00052971983	Nominal Dec [deg]
roll_nom	145.73773864948	Nominal Roll [deg]
revision	2	Processing version of data
ontime	7794.6678458452	Sum of GTIs [s]
livetime	7695.9670681956	Livetime [s]
ontime0	5927.8443080783	Sum of GTIs [s]
ontime1	6102.8587485552	Sum of GTIs [s]
ontime2	5769.0345321298	Sum of GTIs [s]
ontime3	5979.7006130815	Sum of GTIs [s]
ontime6	6310.2292650938	Sum of GTIs [s]
ontime7	7794.6678458452	Sum of GTIs [s]
l2events	571822	Number of level 2 events

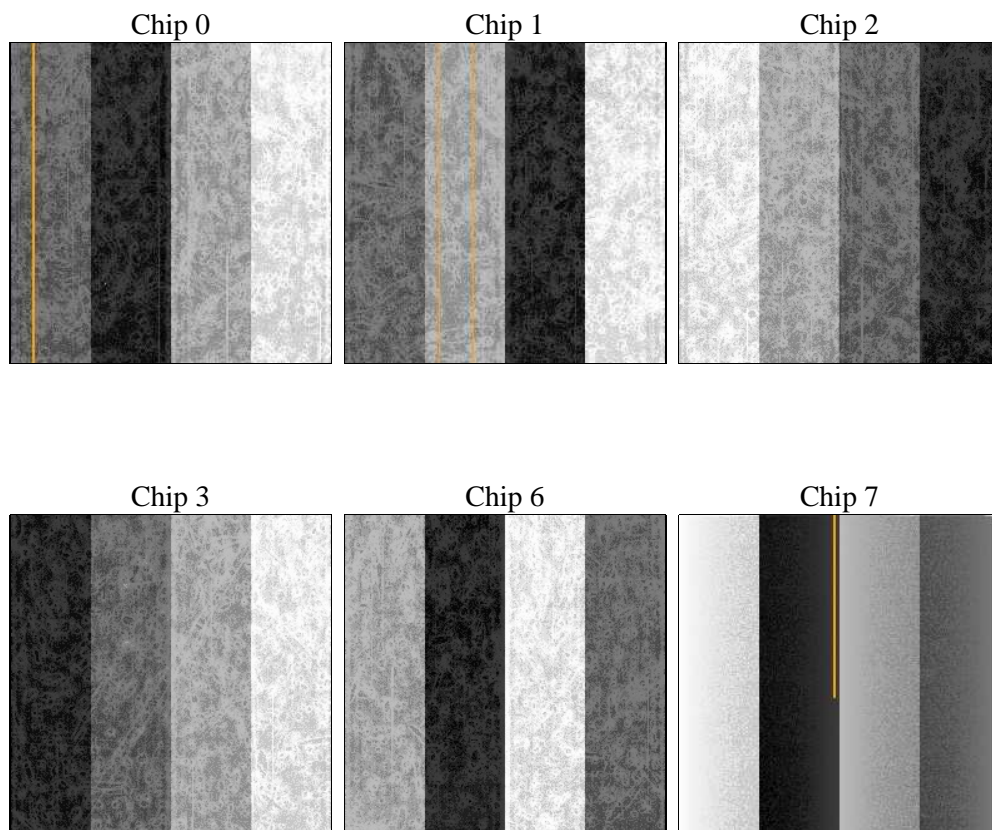
2 OBI

2.1 OBI

2.1.1 Images



2.1.2 Bias



2.1.3 Parameters

obi_num	0	Obi number	sched_exp_time	0.0	[s] Scheduled observation exposure time
ascdsver	8.4.4	Processing system revision	ontime	7794.6678458452	Sum of GTIs [s]
caldsver	4.4.9	 	ontime0	5927.8443080783	Sum of GTIs [s]
date	2012-05-03T17:02:29	Date and time of file creation	ontime1	6102.8587485552	Sum of GTIs [s]
revision	2	Processing version of data	ontime2	5769.0345321298	Sum of GTIs [s]
			ontime3	5979.7006130815	Sum of GTIs [s]
			ontime6	6310.2292650938	Sum of GTIs [s]
			ontime7	7794.6678458452	Sum of GTIs [s]
			l1events	1413314	Number of level 1 events

2.1.4 Events

	ccd 0	ccd 1	ccd 2	ccd 3	ccd 6	ccd 7		ccd 0	ccd 1	ccd 2	ccd 3	ccd 6	ccd 7
level 1 events	225024	234017	230579	229681	253845	240168	grade 0 events	46874	47338	45972	48118	49894	30508
rejected events	137696	142978	145328	140717	156838	88328		20%	20%	19%	20%	19%	12%
rejected %	61%	61%	63%	61%	61%	36%	grade 1 events	337	257	358	344	290	170
								0%	0%	0%	0%	0%	0%
							grade 2 events	16132	17766	15391	16163	18631	37325
								7%	7%	6%	7%	7%	15%
							grade 3 events	5596	5801	5569	5790	5921	13538
								2%	2%	2%	2%	2%	5%
							grade 4 events	5438	5706	5551	5785	5849	13219
								2%	2%	2%	2%	2%	5%
							grade 5 events	2862	3067	2613	3272	3353	10178
								1%	1%	1%	1%	1%	4%
							grade 6 events	13288	14428	12768	13108	16712	57250
								5%	6%	5%	5%	6%	23%
							grade 7 events	134497	139654	142357	137101	153195	77980
								59%	59%	61%	59%	60%	32%

2.2 Compared Parameters

Parameter	Planned	Actual	Parameter	Planned	Actual
Instrument	ACIS	ACIS	Obspar format version number	7	7
Detector	ACIS-012367	ACIS-012367	Obspar file type	PREDICTED	ACTUAL
Grating	NONE	NONE	Obspar update status	NONE	UPDATED
Data mode	FAINT	FAINT	On-chip summing requested	N	N
Observation mode	SECONDARY	SECONDARY	Subarray requested	NONE	NONE
[deg] Pointing RA	0	48.96379817579463	Alternating exposures requested	N	N
[deg] Pointing Dec	0	38.00052971983009	[s] Primary exposure time	3.2	3.2
[deg] Pointing Roll	0.0	145.7377386494787			
[mm] SIM focus pos	-0.782348	-0.7809083437167272			
[mm] SIM defocus	0	0.7524282956875696			
[mm] SIM translation stage pos	-233.592463	250.466033080201			
[mm] SIM translation stage offset	0	-0.01005468664627074			
[s] Observation start time (MET)	310015235.098791	310015234.07377			
Observation start date	2007-10-29T03:20:35	2007-10-29T03:20:34			
[s] Observation end time (MET)	310057559.400836	310057558.37581			
Observation end date	2007-10-29T15:05:59	2007-10-29T15:05:58			
Read mode	TIMED	TIMED			

2.3 Star Slots

2.4 FID Slots

A Summary

A.1 Status

V&V Scientist	Beth Sundheim
V&V Date (YYYY-MM-DD)	2012.05.07
V&V Edition	1
V&V Disposition and Status	OK
V&V Charge Time	7.7946678458452

A.2 Comments