

V&V Reference Report

L2 ASCDS Version : 8.4.4

Observation 58096 - L2 Version 2
Chandra X-Ray Center

L2 Processing Date : May 5 2012

Contents

1	Front	2
2	OBI	3
2.1	OBI	3
2.1.1	Images	3
2.1.2	Bias	3
2.1.3	Parameters	4
2.1.4	Events	4
2.2	Compared Parameters	5
2.3	Star Slots	6
2.4	FID Slots	6
A	Summary	7
A.1	Status	7
A.2	Comments	7

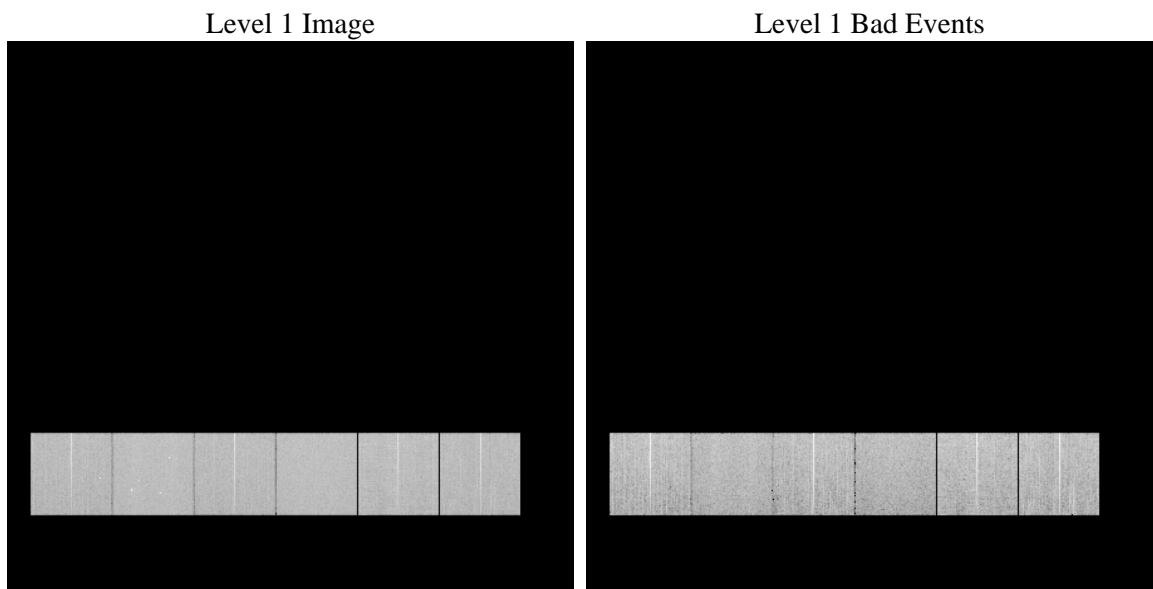
1 Front

seq_num	 	Sequence number
obs_id	58096	Observation id
title	ACIS-456789 diagnostics	Proposal title
observer	CHANDRA engineering request/realtime commanding	Principal investig
object	 	Source name
dtcycle	0	
cycle	P	events from which exps? Prim/Second/Both
ra_targ	0.0	Observer's specified target RA [deg]
dec_targ	0.0	Observer's specified target Dec [deg]
ra_nom	61.028513537409	Nominal RA [deg]
dec_nom	-3.9960213719368	Nominal Dec [deg]
roll_nom	335.06932563596	Nominal Roll [deg]
revision	2	Processing version of data
ontime	7785.599971056	Sum of GTIs [s]
livetime	7687.014016297	Livetime [s]
ontime4	7785.599971056	Sum of GTIs [s]
ontime5	7785.599971056	Sum of GTIs [s]
ontime6	7785.599971056	Sum of GTIs [s]
ontime7	7785.599971056	Sum of GTIs [s]
ontime8	7785.599971056	Sum of GTIs [s]
ontime9	7782.3589606881	Sum of GTIs [s]
l2events	638514	Number of level 2 events

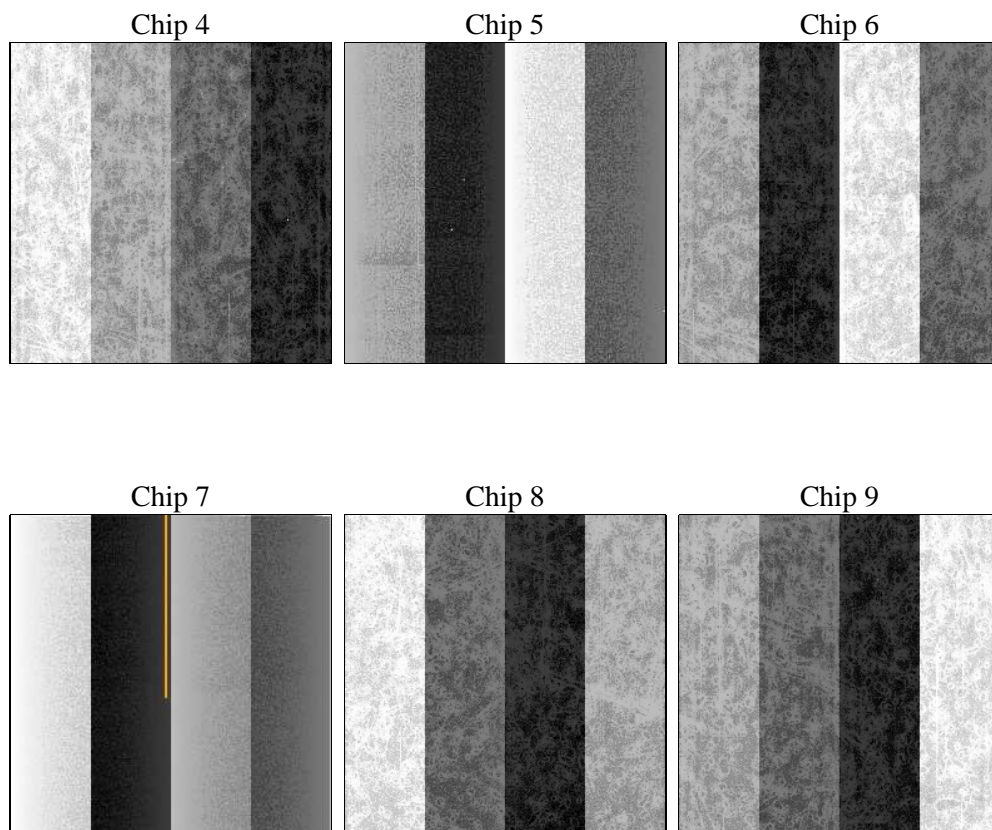
2 OBI

2.1 OBI

2.1.1 Images



2.1.2 Bias



2.1.3 Parameters

obi_num	0	Obi number	sched_exp_time	0.0	[s] Scheduled observation exposure time
ascdsver	8.4.4	Processing system revision	ontime	7785.599971056	Sum of GTIs [s]
caldsver	4.4.9	 	ontime4	7785.599971056	Sum of GTIs [s]
date	2012-05-05T22:52:57	Date and time of file creation	ontime5	7785.599971056	Sum of GTIs [s]
revision	2	Processing version of data	ontime6	7785.599971056	Sum of GTIs [s]
			ontime7	7785.599971056	Sum of GTIs [s]
			ontime8	7785.599971056	Sum of GTIs [s]
			ontime9	7782.3589606881	Sum of GTIs [s]
			l1events	1133509	Number of level 1 events

2.1.4 Events

	ccd 4	ccd 5	ccd 6	ccd 7	ccd 8	ccd 9		ccd 4	ccd 5	ccd 6	ccd 7	ccd 8	ccd 9
level 1 events	178654	198092	180667	198887	196949	180260	grade 0 events	57386	18970	56333	27756	60018	55116
rejected events	80086	68947	75187	63360	80011	78575		32%	9%	31%	13%	30%	30%
rejected %	44%	34%	41%	31%	40%	43%	grade 1 events	539	254	347	142	373	403
								0%	0%	0%	0%	0%	0%
							grade 2 events	14925	48554	18833	29778	21176	17127
								8%	24%	10%	14%	10%	9%
							grade 3 events	6925	5536	6703	12715	8342	6932
								3%	2%	3%	6%	4%	3%
							grade 4 events	6709	5447	6580	12502	8031	6629
								3%	2%	3%	6%	4%	3%
							grade 5 events	3937	8786	4050	10201	5388	4586
								2%	4%	2%	5%	2%	2%
							grade 6 events	12667	50683	17069	52828	19412	15926
								7%	25%	9%	26%	9%	8%
							grade 7 events	75566	59862	70752	52965	74209	73541
								42%	30%	39%	26%	37%	40%

2.2 Compared Parameters

Parameter	Planned	Actual	Parameter	Planned	Actual
Instrument	ACIS	ACIS	Obspar format version number	7	7
Detector	ACIS-456789	ACIS-456789	Obspar file type	PREDICTED	ACTUAL
Grating	NONE	NONE	Obspar update status	NONE	UPDATED
Data mode	FAINT	FAINT	On-chip summing requested	N	N
Observation mode	SECONDARY	SECONDARY	Subarray requested	NONE	NONE
[deg] Pointing RA	0	61.02851353740935	Alternating exposures requested	N	N
[deg] Pointing Dec	0	-3.996021371936818	[s] Primary exposure time	3.2	3.2
[deg] Pointing Roll	0.0	335.0693256359627			
[mm] SIM focus pos	-0.684267	-0.7809083437167272			
[mm] SIM defocus	0	0.7524282956875696			
[mm] SIM translation stage pos	-190.132523	250.4635187648994			
[mm] SIM translation stage offset	0	-0.007540371344731511			
[s] Observation start time (MET)	313213475.103216	313213474.07821			
Observation start date	2007-12-05T03:44:35	2007-12-05T03:44:34			
[s] Observation end time (MET)	313236025.104306	313236024.0793			
Observation end date	2007-12-05T10:00:25	2007-12-05T10:00:24			
Read mode	TIMED	TIMED			

2.3 Star Slots

2.4 FID Slots

A Summary

A.1 Status

V&V Scientist	Jen Lauer
V&V Date (YYYY-MM-DD)	2012.05.08
V&V Edition	1
V&V Disposition and Status	OK
V&V Charge Time	7.785599971056

A.2 Comments