

V&V Reference Report

L2 ASCDS Version : 8.4.4

Observation 58066 - L2 Version 3
Chandra X-Ray Center

L2 Processing Date : May 7 2012

Contents

1	Front	2
2	OBI	3
2.1	OBI	3
2.1.1	Images	3
2.1.2	Bias	3
2.1.3	Parameters	4
2.1.4	Events	4
2.2	Compared Parameters	5
2.3	Star Slots	6
2.4	FID Slots	6
A	Summary	7
A.1	Status	7
A.2	Comments	7

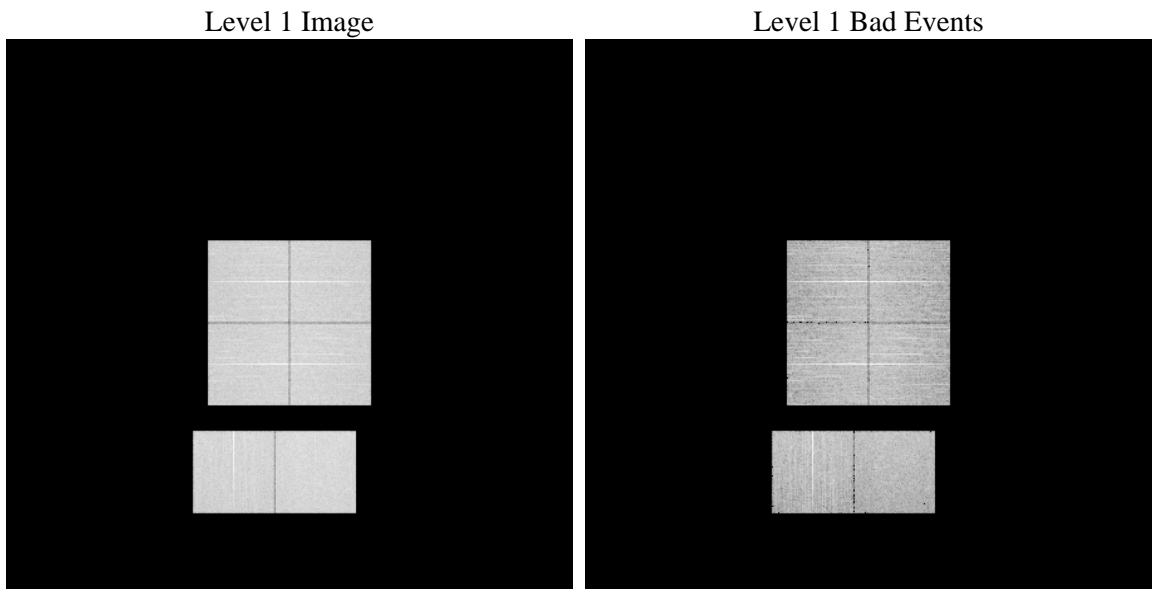
1 Front

seq_num	 	Sequence number
obs_id	58066	Observation id
title	ACIS-012367 diagnostics	Proposal title
observer	CHANDRA engineering request/realtime commanding	Principal investig
object	 	Source name
dtcycle	0	
cycle	P	events from which exps? Prim/Second/Both
ra_targ	0.0	Observer's specified target RA [deg]
dec_targ	0.0	Observer's specified target Dec [deg]
ra_nom	114.97941802189	Nominal RA [deg]
dec_nom	29.021483860848	Nominal Dec [deg]
roll_nom	95.561516221123	Nominal Roll [deg]
revision	3	Processing version of data
ontime	7688.9314796329	Sum of GTIs [s]
livetime	7591.569599519	Livetime [s]
ontime0	7688.8904396296	Sum of GTIs [s]
ontime1	7688.8493996263	Sum of GTIs [s]
ontime2	7688.808359623	Sum of GTIs [s]
ontime3	7688.9725196362	Sum of GTIs [s]
ontime6	7688.7673196197	Sum of GTIs [s]
ontime7	7688.9314796329	Sum of GTIs [s]
l2events	607677	Number of level 2 events

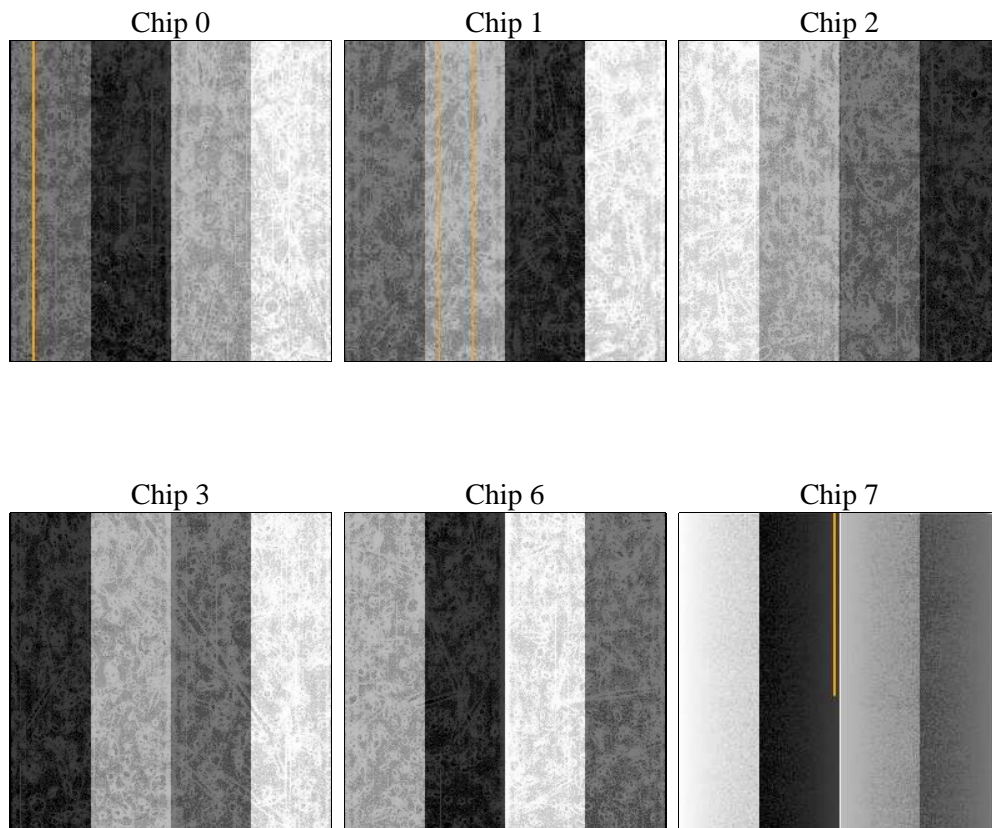
2 OBI

2.1 OBI

2.1.1 Images



2.1.2 Bias



2.1.3 Parameters

obi_num	0	Obi number	sched_exp_time	0.0	[s] Scheduled observation exposure time
ascdsver	8.4.4	Processing system revision	ontime	7688.9314796329	Sum of GTIs [s]
caldsver	4.4.9	 	ontime0	7688.8904396296	Sum of GTIs [s]
date	2012-05-07T05:07:43	Date and time of file creation	ontime1	7688.8493996263	Sum of GTIs [s]
revision	3	Processing version of data	ontime2	7688.808359623	Sum of GTIs [s]
			ontime3	7688.9725196362	Sum of GTIs [s]
			ontime6	7688.7673196197	Sum of GTIs [s]
			ontime7	7688.9314796329	Sum of GTIs [s]
			l1events	1044428	Number of level 1 events

2.1.4 Events

	ccd 0	ccd 1	ccd 2	ccd 3	ccd 6	ccd 7		ccd 0	ccd 1	ccd 2	ccd 3	ccd 6	ccd 7
level 1 events	166254	164523	171895	172532	176118	193106	grade 0 events	54254	54469	56374	56100	56569	27529
rejected events	66361	63316	70689	71402	70824	60858		32%	33%	32%	32%	32%	14%
rejected %	39%	38%	41%	41%	40%	31%	grade 1 events	432	304	428	458	310	161
								0%	0%	0%	0%	0%	0%
							grade 2 events	18116	18853	17302	17877	18648	28769
								10%	11%	10%	10%	10%	14%
							grade 3 events	6773	6768	6837	6873	6831	12664
								4%	4%	3%	3%	3%	6%
							grade 4 events	6712	6552	6848	6905	6811	12557
								4%	3%	3%	4%	3%	6%
							grade 5 events	3599	3741	3515	4085	3858	9912
								2%	2%	2%	2%	2%	5%
							grade 6 events	15151	15715	14962	14525	17600	52190
								9%	9%	8%	8%	9%	27%
							grade 7 events	61217	58121	65629	65709	65491	49324
								36%	35%	38%	38%	37%	25%

2.2 Compared Parameters

Parameter	Planned	Actual	Parameter	Planned	Actual
Instrument	ACIS	ACIS	Obspar format version number	7	7
Detector	ACIS-012367	ACIS-012367	Obspar file type	PREDICTED	ACTUAL
Grating	NONE	NONE	Obspar update status	NONE	UPDATED
Data mode	FAINT	FAINT	On-chip summing requested	N	N
Observation mode	SECONDARY	SECONDARY	Subarray requested	NONE	NONE
[deg] Pointing RA	0	114.9794180218889	Alternating exposures requested	N	N
[deg] Pointing Dec	0	29.02148386084793	[s] Primary exposure time	3.2	3.2
[deg] Pointing Roll	0.0	95.56151622112321			
[mm] SIM focus pos	-0.782348	-0.7809083437167272			
[mm] SIM defocus	0	0.7524282956875696			
[mm] SIM translation stage pos	-233.592463	250.466033080201			
[mm] SIM translation stage offset	0	-0.01005468664627074			
[s] Observation start time (MET)	314396950.410433	314396949.38543			
Observation start date	2007-12-18T20:29:10	2007-12-18T20:29:09			
[s] Observation end time (MET)	314419168.311508	314419167.2865			
Observation end date	2007-12-19T02:39:28	2007-12-19T02:39:27			
Read mode	TIMED	TIMED			

2.3 Star Slots

2.4 FID Slots

A Summary

A.1 Status

V&V Scientist	Joy Nichols
V&V Date (YYYY-MM-DD)	2012.05.09
V&V Edition	1
V&V Disposition and Status	OK
V&V Charge Time	7.6889314796329

A.2 Comments