

V&V Reference Report

L2 ASCDS Version : 8.4.3

Observation 59177 - L2 Version 2
Chandra X-Ray Center

L2 Processing Date : Mar 23 2012

Contents

1	Front	2
2	OBI	3
2.1	OBI	3
2.1.1	Images	3
2.1.2	Bias	3
2.1.3	Parameters	4
2.1.4	Events	4
2.2	Compared Parameters	5
2.3	Star Slots	6
2.4	FID Slots	6
A	Summary	7
A.1	Status	7
A.2	Comments	7

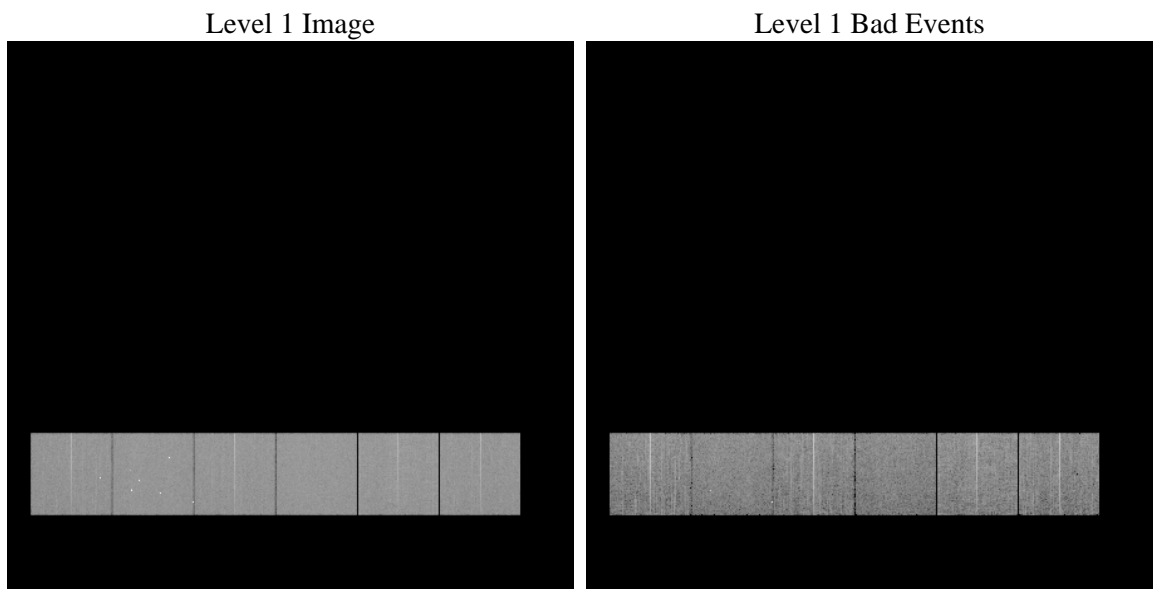
1 Front

seq_num	 	Sequence number
obs_id	59177	Observation id
title	ACIS-456789 diagnostics	Proposal title
observer	CHANDRA engineering request/realtime commanding	Principal investig
object	 	Source name
dtcycle	0	
cycle	P	events from which exps? Prim/Second/Both
ra_targ	0.0	Observer's specified target RA [deg]
dec_targ	0.0	Observer's specified target Dec [deg]
ra_nom	89.998923291336	Nominal RA [deg]
dec_nom	40.971379566125	Nominal Dec [deg]
roll_nom	235.50074998079	Nominal Roll [deg]
revision	2	Processing version of data
ontime	7795.1999709606	Sum of GTIs [s]
livetime	7696.4924552224	Livetime [s]
ontime4	7597.4504124224	Sum of GTIs [s]
ontime5	7795.1999709606	Sum of GTIs [s]
ontime6	7795.1924210191	Sum of GTIs [s]
ontime7	7795.1999709606	Sum of GTIs [s]
ontime8	7795.1103410423	Sum of GTIs [s]
ontime9	7720.6569643617	Sum of GTIs [s]
l2events	942473	Number of level 2 events

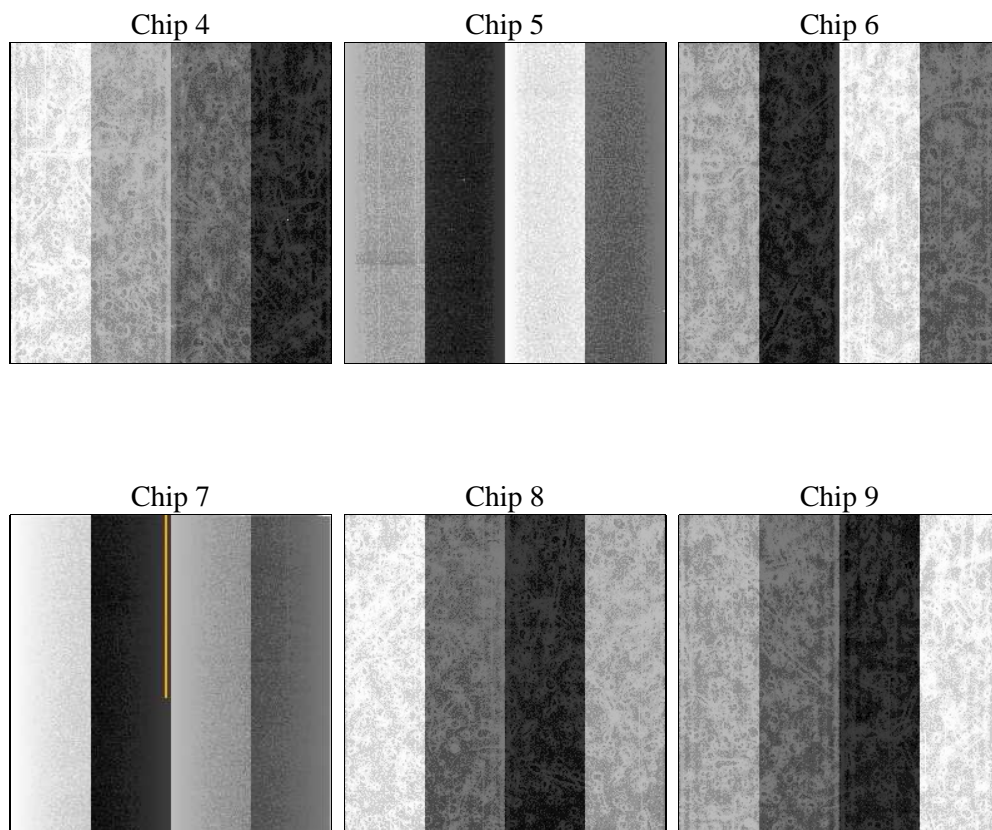
2 OBI

2.1 OBI

2.1.1 Images



2.1.2 Bias



2.1.3 Parameters

obi_num	2	Obi number	sched_exp_time	0.0	[s] Scheduled observation exposure time
ascdsver	8.4.3	Processing system revision	ontime	7795.1999709606	Sum of GTIs [s]
caldsver	4.4.8	 	ontime4	7597.4504124224	Sum of GTIs [s]
date	2012-03-23T14:58:02	Date and time of file creation	ontime5	7795.1999709606	Sum of GTIs [s]
revision	2	Processing version of data	ontime6	7795.1924210191	Sum of GTIs [s]
			ontime7	7795.1999709606	Sum of GTIs [s]
			ontime8	7795.1103410423	Sum of GTIs [s]
			ontime9	7720.6569643617	Sum of GTIs [s]
			l1events	1394942	Number of level 1 events

2.1.4 Events

	ccd 4	ccd 5	ccd 6	ccd 7	ccd 8	ccd 9		ccd 4	ccd 5	ccd 6	ccd 7	ccd 8	ccd 9
level 1 events	218244	239010	231668	238457	244058	223505	grade 0 events	89287	39166	90112	42401	93300	87362
rejected events	66277	59750	65023	52951	69994	64822		40%	16%	38%	17%	38%	39%
rejected %	30%	24%	28%	22%	28%	29%	grade 1 events	762	968	499	174	540	555
								0%	0%	0%	0%	0%	0%
							grade 2 events	23343	64873	28748	40746	30762	27010
								10%	27%	12%	17%	12%	12%
							grade 3 events	10221	9320	10455	18234	11647	10245
								4%	3%	4%	7%	4%	4%
							grade 4 events	10021	9306	10469	18086	11652	10203
								4%	3%	4%	7%	4%	4%
							grade 5 events	3624	8888	3838	9052	4709	4189
								1%	3%	1%	3%	1%	1%
							grade 6 events	19151	56656	26927	66127	26752	23927
								8%	23%	11%	27%	10%	10%
							grade 7 events	61835	49833	60620	43637	64696	60014
								28%	20%	26%	18%	26%	26%

2.2 Compared Parameters

Parameter	Planned	Actual
Instrument	ACIS	ACIS
Detector	ACIS-456789	ACIS-456789
Grating	NONE	NONE
Data mode	FAINT	FAINT
Observation mode	SECONDARY	SECONDARY
[deg] Pointing RA	0	89.99892329133573
[deg] Pointing Dec	0	40.97137956612518
[deg] Pointing Roll	0.0	235.5007499807877
[mm] SIM focus pos	-0.684267	-0.6828225247311905
[mm] SIM defocus	0	0.8505141146731063
[mm] SIM translation stage pos	-190.132523	250.466033080201
[mm] SIM translation stage offset	0	-0.01005468664627074
[s] Observation start time (MET)	253587125.130652	253587124.10564
Observation start date	2006-01-14T00:52:05	2006-01-14T00:52:04
[s] Observation end time (MET)	253601516.13132	253601515.10631
Observation end date	2006-01-14T04:51:56	2006-01-14T04:51:55
Read mode	TIMED	TIMED

Parameter	Planned	Actual
Obspar format version number	7	7
Obspar file type	PREDICTED	ACTUAL
Obspar update status	NONE	UPDATED
On-chip summing requested	N	N
Subarray requested	NONE	NONE
Alternating exposures requested	N	N
[s] Primary exposure time	3.2	3.2

2.3 Star Slots

2.4 FID Slots

A Summary

A.1 Status

V&V Scientist	Jen Lauer
V&V Date (YYYY-MM-DD)	2012.03.23
V&V Edition	1
V&V Disposition and Status	OK
V&V Charge Time	7.7951999709606

A.2 Comments