

V&V Reference Report

L2 ASCDS Version : 8.4.3

Observation 59045 - L2 Version 2
Chandra X-Ray Center

L2 Processing Date : Mar 28 2012

Contents

| | | |
|----------|-------------------------------|----------|
| 1 | Front | 2 |
| 2 | OBI | 3 |
| 2.1 | OBI | 3 |
| 2.1.1 | Images | 3 |
| 2.1.2 | Bias | 3 |
| 2.1.3 | Parameters | 4 |
| 2.1.4 | Events | 4 |
| 2.2 | Compared Parameters | 5 |
| 2.3 | Star Slots | 6 |
| 2.4 | FID Slots | 6 |
| A | Summary | 7 |
| A.1 | Status | 7 |
| A.2 | Comments | 7 |

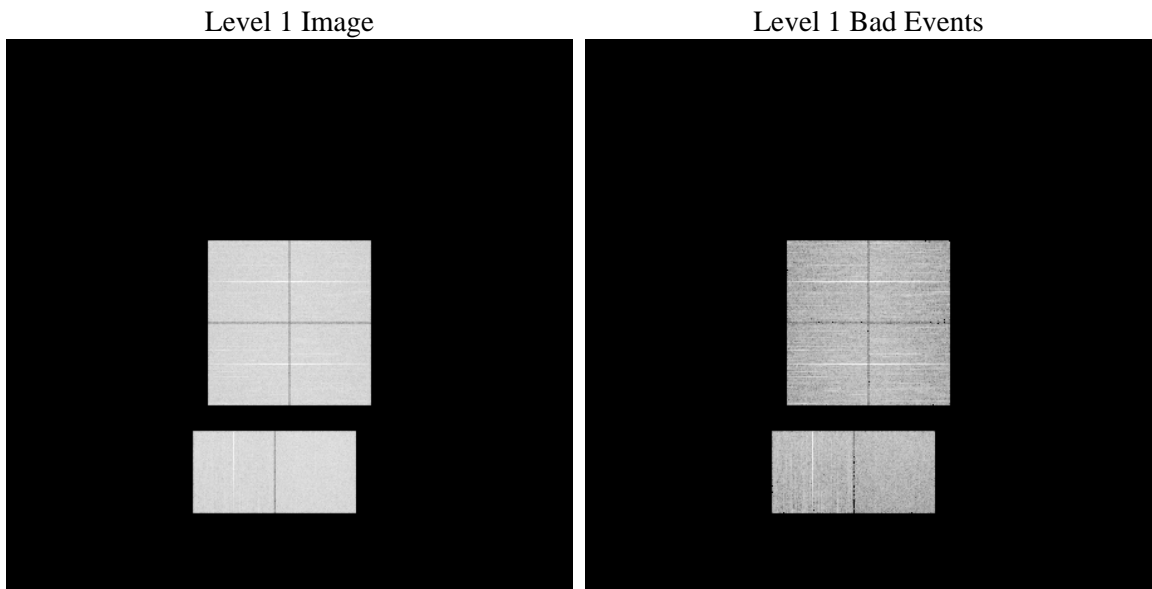
1 Front

| | | |
|----------|---|---|
| seq_num | | Sequence number |
| obs_id | 59045 | Observation id |
| title | ACIS-012367 diagnostics | Proposal title |
| observer | CHANDRA engineering request/realtime commanding | Principal investig |
| object | | Source name |
| dtcycle | 0 | |
| cycle | P | events from which exps? Prim/Second/Both |
| ra_targ | 0.0 | Observer's specified target RA [deg] |
| dec_targ | 0.0 | Observer's specified target Dec [deg] |
| ra_nom | 195.96900097726 | Nominal RA [deg] |
| dec_nom | 24.49517620604 | Nominal Dec [deg] |
| roll_nom | 156.8366799464 | Nominal Roll [deg] |
| revision | 2 | Processing version of data |
| ontime | 7798.3999709487 | Sum of GTIs [s] |
| livetime | 7699.6519348838 | Livetime [s] |
| ontime0 | 7798.3999709487 | Sum of GTIs [s] |
| ontime1 | 7798.3999709487 | Sum of GTIs [s] |
| ontime2 | 7798.3999709487 | Sum of GTIs [s] |
| ontime3 | 7798.3999709487 | Sum of GTIs [s] |
| ontime6 | 7798.3999709487 | Sum of GTIs [s] |
| ontime7 | 7798.3999709487 | Sum of GTIs [s] |
| l2events | 905974 | Number of level 2 events |

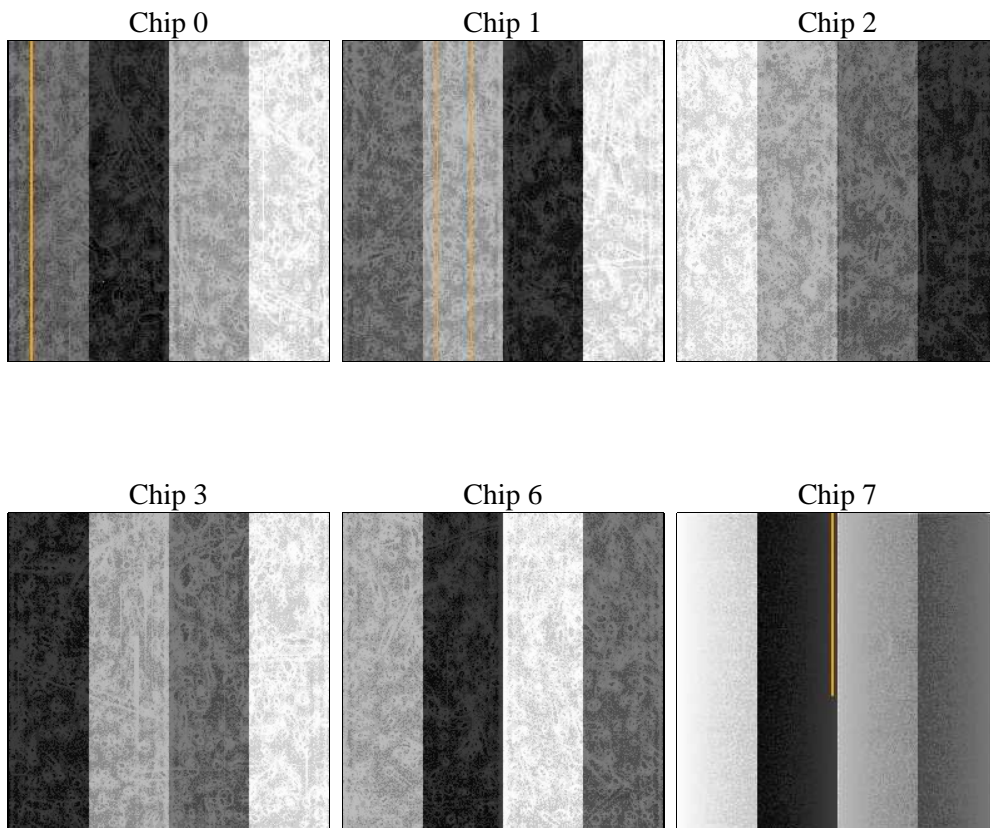
2 OBI

2.1 OBI

2.1.1 Images



2.1.2 Bias



2.1.3 Parameters

| | | | | | |
|----------|---------------------|--------------------------------|----------------|-----------------|---|
| obi_num | 1 | Obi number | sched_exp_time | 0.0 | [s] Scheduled observation exposure time |
| ascdsver | 8.4.3 | Processing system revision | ontime | 7798.3999709487 | Sum of GTIs [s] |
| caldsver | 4.4.8 | | ontime0 | 7798.3999709487 | Sum of GTIs [s] |
| date | 2012-03-29T00:17:38 | Date and time of file creation | ontime1 | 7798.3999709487 | Sum of GTIs [s] |
| revision | 2 | Processing version of data | ontime2 | 7798.3999709487 | Sum of GTIs [s] |
| | | | ontime3 | 7798.3999709487 | Sum of GTIs [s] |
| | | | ontime6 | 7798.3999709487 | Sum of GTIs [s] |
| | | | ontime7 | 7798.3999709487 | Sum of GTIs [s] |
| | | | l1events | 1332638 | Number of level 1 events |

2.1.4 Events

| | ccd 0 | ccd 1 | ccd 2 | ccd 3 | ccd 6 | ccd 7 | | ccd 0 | ccd 1 | ccd 2 | ccd 3 | ccd 6 | ccd 7 |
|-----------------|--------|--------|--------|--------|--------|--------|----------------|-------|-------|-------|-------|-------|-------|
| level 1 events | 213338 | 215765 | 219783 | 220340 | 225567 | 237845 | grade 0 events | 83076 | 82185 | 85745 | 85924 | 85997 | 41202 |
| rejected events | 60794 | 63302 | 66012 | 66268 | 66008 | 56220 | | 38% | 38% | 39% | 38% | 38% | 17% |
| rejected % | 28% | 29% | 30% | 30% | 29% | 23% | grade 1 events | 570 | 446 | 598 | 667 | 482 | 166 |
| | | | | | | | | 0% | 0% | 0% | 0% | 0% | 0% |
| | | | | | | | grade 2 events | 26881 | 27516 | 26137 | 26410 | 27740 | 39902 |
| | | | | | | | | 12% | 12% | 11% | 11% | 12% | 16% |
| | | | | | | | grade 3 events | 10103 | 9963 | 10173 | 10209 | 10192 | 17904 |
| | | | | | | | | 4% | 4% | 4% | 4% | 4% | 7% |
| | | | | | | | grade 4 events | 9954 | 9922 | 10195 | 10248 | 10068 | 17715 |
| | | | | | | | | 4% | 4% | 4% | 4% | 4% | 7% |
| | | | | | | | grade 5 events | 3501 | 3739 | 3463 | 3894 | 4037 | 9617 |
| | | | | | | | | 1% | 1% | 1% | 1% | 1% | 4% |
| | | | | | | | grade 6 events | 22585 | 22951 | 21585 | 21353 | 25643 | 64987 |
| | | | | | | | | 10% | 10% | 9% | 9% | 11% | 27% |
| | | | | | | | grade 7 events | 56668 | 59043 | 61887 | 61635 | 61408 | 46352 |
| | | | | | | | | 26% | 27% | 28% | 27% | 27% | 19% |

2.2 Compared Parameters

| Parameter | Planned | Actual | Parameter | Planned | Actual |
|-----------------------------------|---------------------|-----------------------|---------------------------------|-----------|---------|
| Instrument | ACIS | ACIS | Obspar format version number | 7 | 7 |
| Detector | ACIS-012367 | ACIS-012367 | Obspar file type | PREDICTED | ACTUAL |
| Grating | NONE | NONE | Obspar update status | NONE | UPDATED |
| Data mode | FAINT | FAINT | On-chip summing requested | N | N |
| Observation mode | SECONDARY | SECONDARY | Subarray requested | NONE | NONE |
| [deg] Pointing RA | 0 | 195.9690009772587 | Alternating exposures requested | N | N |
| [deg] Pointing Dec | 0 | 24.49517620603982 | [s] Primary exposure time | 3.2 | 3.2 |
| [deg] Pointing Roll | 0.0 | 156.8366799463961 | | | |
| [mm] SIM focus pos | -0.782348 | -0.6828225247311905 | | | |
| [mm] SIM defocus | 0 | 0.8505141146731063 | | | |
| [mm] SIM translation stage pos | -233.592463 | 250.4635187648994 | | | |
| [mm] SIM translation stage offset | 0 | -0.007540371344731511 | | | |
| [s] Observation start time (MET) | 259751102.316924 | 259751101.29194 | | | |
| Observation start date | 2006-03-26T09:05:02 | 2006-03-26T09:05:01 | | | |
| [s] Observation end time (MET) | 259791477.068802 | 259791476.04382 | | | |
| Observation end date | 2006-03-26T20:17:57 | 2006-03-26T20:17:56 | | | |
| Read mode | TIMED | TIMED | | | |

2.3 Star Slots

2.4 FID Slots

A Summary

A.1 Status

| | |
|----------------------------|-----------------|
| V&V Scientist | Jen Lauer |
| V&V Date (YYYY-MM-DD) | 2012.03.30 |
| V&V Edition | 1 |
| V&V Disposition and Status | OK |
| V&V Charge Time | 7.7983999709487 |

A.2 Comments