

V&V Reference Report

L2 ASCDS Version : 8.4.3

Observation 59025 - L2 Version 2
Chandra X-Ray Center

L2 Processing Date : Mar 30 2012

Contents

1	Front	2
2	OBI	3
2.1	OBI	3
2.1.1	Images	3
2.1.2	Bias	3
2.1.3	Parameters	4
2.1.4	Events	4
2.2	Compared Parameters	5
2.3	Star Slots	6
2.4	FID Slots	6
A	Summary	7
A.1	Status	7
A.2	Comments	7

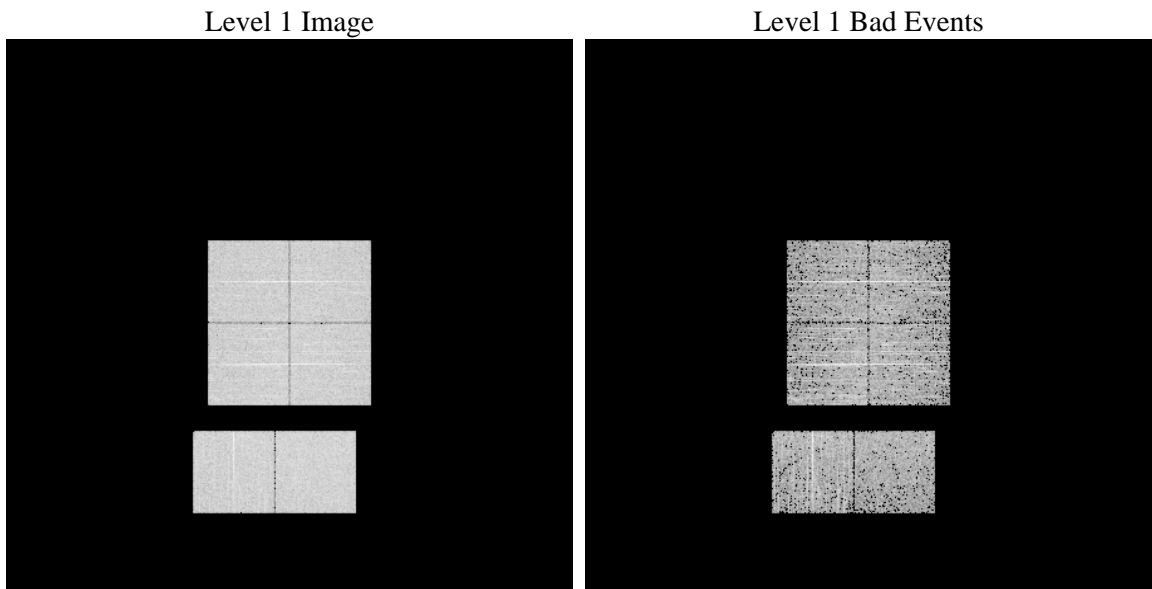
1 Front

seq_num	 	Sequence number
obs_id	59025	Observation id
title	ACIS-012367 diagnostics	Proposal title
observer	CHANDRA engineering request/realtime commanding	Principal investig
object	 	Source name
dtcycle	0	
cycle	P	events from which exps? Prim/Second/Both
ra_targ	0.0	Observer's specified target RA [deg]
dec_targ	0.0	Observer's specified target Dec [deg]
ra_nom	226.99641837335	Nominal RA [deg]
dec_nom	-19.972895722916	Nominal Dec [deg]
roll_nom	70.095384098553	Nominal Roll [deg]
revision	2	Processing version of data
ontime	2287.2798691094	Sum of GTIs [s]
livetime	2258.3169541721	Livetime [s]
ontime0	2287.2388291061	Sum of GTIs [s]
ontime1	2287.1977891028	Sum of GTIs [s]
ontime2	2287.1567490995	Sum of GTIs [s]
ontime3	2287.3209091127	Sum of GTIs [s]
ontime6	2287.115709126	Sum of GTIs [s]
ontime7	2287.2798691094	Sum of GTIs [s]
l2events	277154	Number of level 2 events

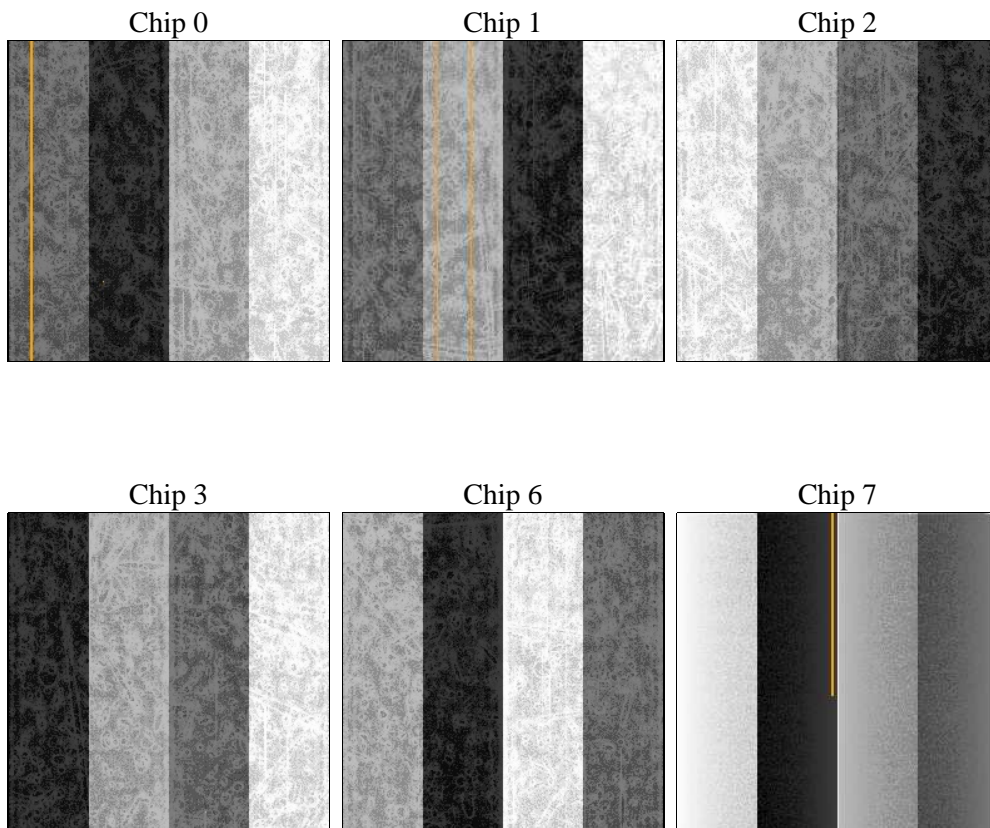
2 OBI

2.1 OBI

2.1.1 Images



2.1.2 Bias



2.1.3 Parameters

obi_num	0	Obi number	sched_exp_time	0.0	[s] Scheduled observation exposure time
ascdsver	8.4.3	Processing system revision	ontime	2287.2798691094	Sum of GTIs [s]
caldsver	4.4.8	 	ontime0	2287.2388291061	Sum of GTIs [s]
date	2012-03-30T05:01:40	Date and time of file creation	ontime1	2287.1977891028	Sum of GTIs [s]
revision	2	Processing version of data	ontime2	2287.1567490995	Sum of GTIs [s]
			ontime3	2287.3209091127	Sum of GTIs [s]
			ontime6	2287.115709126	Sum of GTIs [s]
			ontime7	2287.2798691094	Sum of GTIs [s]
			l1events	408421	Number of level 1 events

2.1.4 Events

	ccd 0	ccd 1	ccd 2	ccd 3	ccd 6	ccd 7		ccd 0	ccd 1	ccd 2	ccd 3	ccd 6	ccd 7
level 1 events	64781	65468	68410	67752	70395	71615	grade 0 events	25326	25327	26069	26207	26493	12461
rejected events	18121	18494	21587	20389	21156	16560		39%	38%	38%	38%	37%	17%
rejected %	27%	28%	31%	30%	30%	23%	grade 1 events	192	143	168	193	127	45
								0%	0%	0%	0%	0%	0%
							grade 2 events	8188	8380	7758	7997	8454	12074
								12%	12%	11%	11%	12%	16%
							grade 3 events	3081	2983	2998	3169	3106	5316
								4%	4%	4%	4%	4%	7%
							grade 4 events	3023	2978	3080	3121	2976	5359
								4%	4%	4%	4%	4%	7%
							grade 5 events	1032	1152	951	1183	1210	2746
								1%	1%	1%	1%	1%	3%
							grade 6 events	7042	7306	6918	6869	8210	19845
								10%	11%	10%	10%	11%	27%
							grade 7 events	16897	17199	20468	19013	19819	13769
								26%	26%	29%	28%	28%	19%

2.2 Compared Parameters

Parameter	Planned	Actual
Instrument	ACIS	ACIS
Detector	ACIS-012367	ACIS-012367
Grating	NONE	NONE
Data mode	FAINT	FAINT
Observation mode	SECONDARY	SECONDARY
[deg] Pointing RA	0	226.9964183733525
[deg] Pointing Dec	0	-19.97289572291615
[deg] Pointing Roll	0.0	70.09538409855283
[mm] SIM focus pos	-0.782348	-0.7809083437167272
[mm] SIM defocus	0	0.7524282956875696
[mm] SIM translation stage pos	-233.592463	250.466033080201
[mm] SIM translation stage offset	0	-0.01005468664627074
[s] Observation start time (MET)	261127156.680993	261127155.65602
Observation start date	2006-04-11T07:19:17	2006-04-11T07:19:15
[s] Observation end time (MET)	261140795.331628	261140794.30665
Observation end date	2006-04-11T11:06:35	2006-04-11T11:06:34
Read mode	TIMED	TIMED

Parameter	Planned	Actual
Obspar format version number	7	7
Obspar file type	PREDICTED	ACTUAL
Obspar update status	NONE	UPDATED
On-chip summing requested	N	N
Subarray requested	NONE	NONE
Alternating exposures requested	N	N
[s] Primary exposure time	3.2	3.2

2.3 Star Slots

2.4 FID Slots

A Summary

A.1 Status

V&V Scientist	Jen Lauer
V&V Date (YYYY-MM-DD)	2012.03.30
V&V Edition	1
V&V Disposition and Status	OK
V&V Charge Time	2.2872798691094

A.2 Comments