

V&V Reference Report

L2 ASCDS Version : 8.4.3.1

Observation 58973 - L2 Version 2
Chandra X-Ray Center

L2 Processing Date : Apr 1 2012

Contents

1	Front	2
2	OBI	3
2.1	OBI	3
2.1.1	Images	3
2.1.2	Bias	3
2.1.3	Parameters	4
2.1.4	Events	4
2.2	Compared Parameters	5
2.3	Star Slots	6
2.4	FID Slots	6
A	Summary	7
A.1	Status	7
A.2	Comments	7

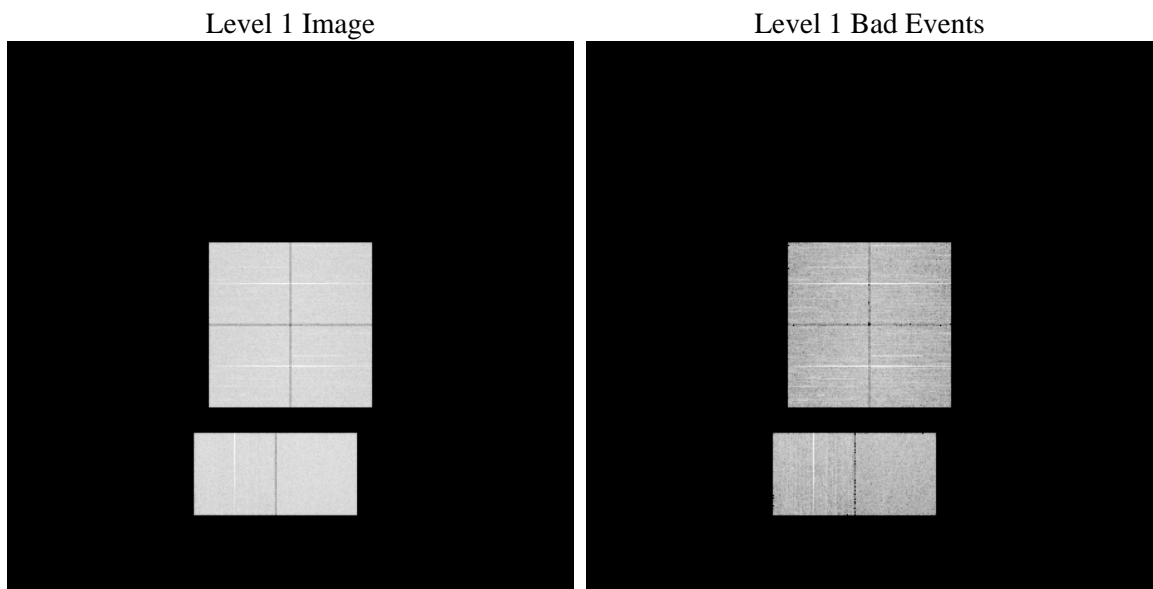
1 Front

seq_num	 	Sequence number
obs_id	58973	Observation id
title	ACIS-012367 diagnostics	Proposal title
observer	CHANDRA engineering request/realtime commanding	Principal investig
object	 	Source name
dtcycle	0	
cycle	P	events from which exps? Prim/Second/Both
ra_targ	0.0	Observer's specified target RA [deg]
dec_targ	0.0	Observer's specified target Dec [deg]
ra_nom	242.27121198282	Nominal RA [deg]
dec_nom	6.4989862458034	Nominal Dec [deg]
roll_nom	149.13692225452	Nominal Roll [deg]
revision	2	Processing version of data
ontime	8211.1999694109	Sum of GTIs [s]
livetime	8107.2248112072	Livetime [s]
ontime0	8211.1999694109	Sum of GTIs [s]
ontime1	8211.1999694109	Sum of GTIs [s]
ontime2	8211.1999694109	Sum of GTIs [s]
ontime3	8211.1999694109	Sum of GTIs [s]
ontime6	8211.1999694109	Sum of GTIs [s]
ontime7	8211.1999694109	Sum of GTIs [s]
l2events	922017	Number of level 2 events

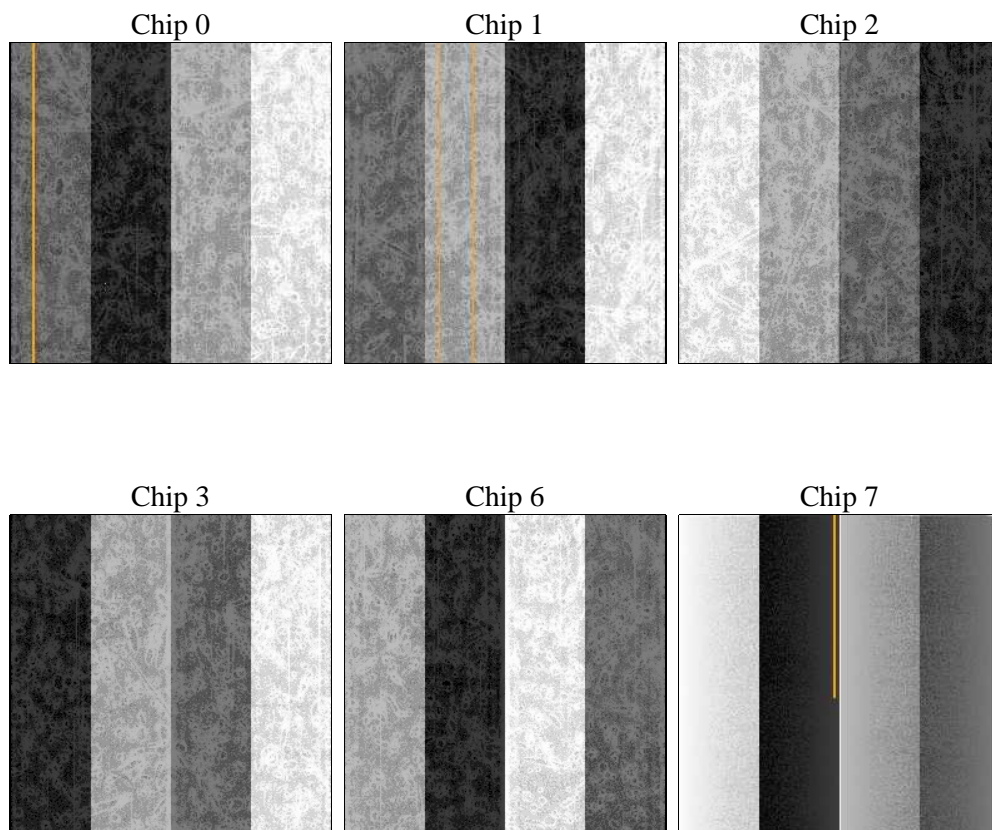
2 OBI

2.1 OBI

2.1.1 Images



2.1.2 Bias



2.1.3 Parameters

obi_num	0	Obi number	sched_exp_time	0.0	[s] Scheduled observation exposure time
ascdsver	8.4.3	Processing system revision	ontime	8211.1999694109	Sum of GTIs [s]
caldsver	4.4.9	 	ontime0	8211.1999694109	Sum of GTIs [s]
date	2012-04-01T05:09:38	Date and time of file creation	ontime1	8211.1999694109	Sum of GTIs [s]
revision	2	Processing version of data	ontime2	8211.1999694109	Sum of GTIs [s]
			ontime3	8211.1999694109	Sum of GTIs [s]
			ontime6	8211.1999694109	Sum of GTIs [s]
			ontime7	8211.1999694109	Sum of GTIs [s]
			l1events	1383211	Number of level 1 events

2.1.4 Events

	ccd 0	ccd 1	ccd 2	ccd 3	ccd 6	ccd 7		ccd 0	ccd 1	ccd 2	ccd 3	ccd 6	ccd 7
level 1 events	221154	222264	228266	227988	234898	248641	grade 0 events	84801	84379	87608	87490	87573	41918
rejected events	66861	67027	71638	71831	72737	62115		38%	37%	38%	38%	37%	16%
rejected %	30%	30%	31%	31%	30%	24%	grade 1 events	613	492	674	662	536	141
								0%	0%	0%	0%	0%	0%
							grade 2 events	27395	28180	26677	26920	28649	40741
								12%	12%	11%	11%	12%	16%
							grade 3 events	10089	10219	10512	10547	10344	18243
								4%	4%	4%	4%	4%	7%
							grade 4 events	10169	10051	10442	10454	10407	18408
								4%	4%	4%	4%	4%	7%
							grade 5 events	3799	4092	3633	4200	4199	10538
								1%	1%	1%	1%	1%	4%
							grade 6 events	23077	23700	22702	22118	26556	68781
								10%	10%	9%	9%	11%	27%
							grade 7 events	61211	61151	66018	65597	66634	49871
								27%	27%	28%	28%	28%	20%

2.2 Compared Parameters

Parameter	Planned	Actual	Parameter	Planned	Actual
Instrument	ACIS	ACIS	Obspar format version number	7	7
Detector	ACIS-012367	ACIS-012367	Obspar file type	PREDICTED	ACTUAL
Grating	NONE	NONE	Obspar update status	NONE	UPDATED
Data mode	FAINT	FAINT	On-chip summing requested	N	N
Observation mode	SECONDARY	SECONDARY	Subarray requested	NONE	NONE
[deg] Pointing RA	0	242.271211982817	Alternating exposures requested	N	N
[deg] Pointing Dec	0	6.498986245803393	[s] Primary exposure time	3.2	3.2
[deg] Pointing Roll	0.0	149.1369222545224			
[mm] SIM focus pos	-0.782348	-0.6828225247311905			
[mm] SIM defocus	0	0.8505141146731063			
[mm] SIM translation stage pos	-233.592463	250.466033080201			
[mm] SIM translation stage offset	0	-0.01005468664627074			
[s] Observation start time (MET)	263675101.799838	263675100.77483			
Observation start date	2006-05-10T19:05:02	2006-05-10T19:05:00			
[s] Observation end time (MET)	263698449.250928	263698448.22592			
Observation end date	2006-05-11T01:34:09	2006-05-11T01:34:08			
Read mode	TIMED	TIMED			

2.3 Star Slots

2.4 FID Slots

A Summary

A.1 Status

V&V Scientist	Beth Sundheim
V&V Date (YYYY-MM-DD)	2012.04.03
V&V Edition	1
V&V Disposition and Status	OK
V&V Charge Time	8.2111999694109

A.2 Comments