

# V&V Reference Report

## L2 ASCDS Version : 8.4.3.1

Observation 58833 - L2 Version 2  
Chandra X-Ray Center

L2 Processing Date : Apr 6 2012

## Contents

<b>1</b>	<b>Front</b>	<b>2</b>
<b>2</b>	<b>OBI</b>	<b>3</b>
2.1	OBI . . . . .	3
2.1.1	Images . . . . .	3
2.1.2	Bias . . . . .	3
2.1.3	Parameters . . . . .	4
2.1.4	Events . . . . .	4
2.2	Compared Parameters . . . . .	5
2.3	Star Slots . . . . .	6
2.4	FID Slots . . . . .	6
<b>A</b>	<b>Summary</b>	<b>7</b>
A.1	Status . . . . .	7
A.2	Comments . . . . .	7

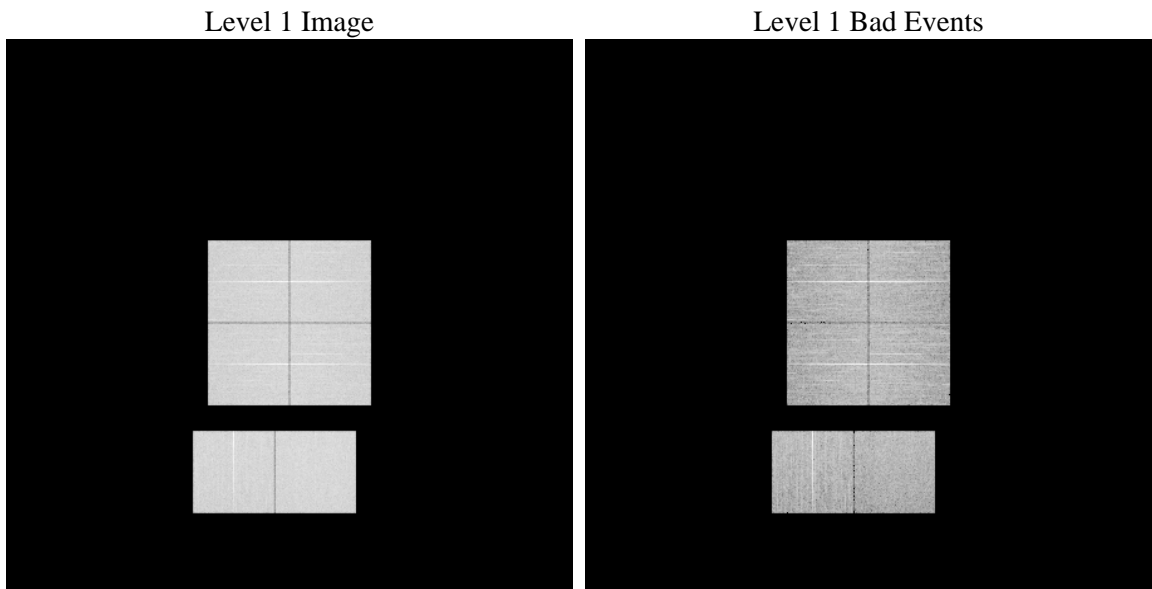
# 1 Front

seq_num	&#160	Sequence number
obs_id	58833	Observation id
title	ACIS-012367 diagnostics	Proposal title
observer	CHANDRA engineering request/realtime commanding	Principal investig
object	&#160	Source name
dtcycle	0	&#160
cycle	P	events from which exps? Prim/Second/Both
ra_targ	0.0	Observer's specified target RA [deg]
dec_targ	0.0	Observer's specified target Dec [deg]
ra_nom	295.39675805024	Nominal RA [deg]
dec_nom	2.071544085212	Nominal Dec [deg]
roll_nom	230.67642059319	Nominal Roll [deg]
revision	2	Processing version of data
ontime	8274.2979283929	Sum of GTIs [s]
livetime	8169.5237858395	Livetime [s]
ontime0	8274.2979283929	Sum of GTIs [s]
ontime1	8274.2720439434	Sum of GTIs [s]
ontime2	8274.2310039401	Sum of GTIs [s]
ontime3	8274.2979283929	Sum of GTIs [s]
ontime6	8274.1899639368	Sum of GTIs [s]
ontime7	8274.2979283929	Sum of GTIs [s]
l2events	924516	Number of level 2 events

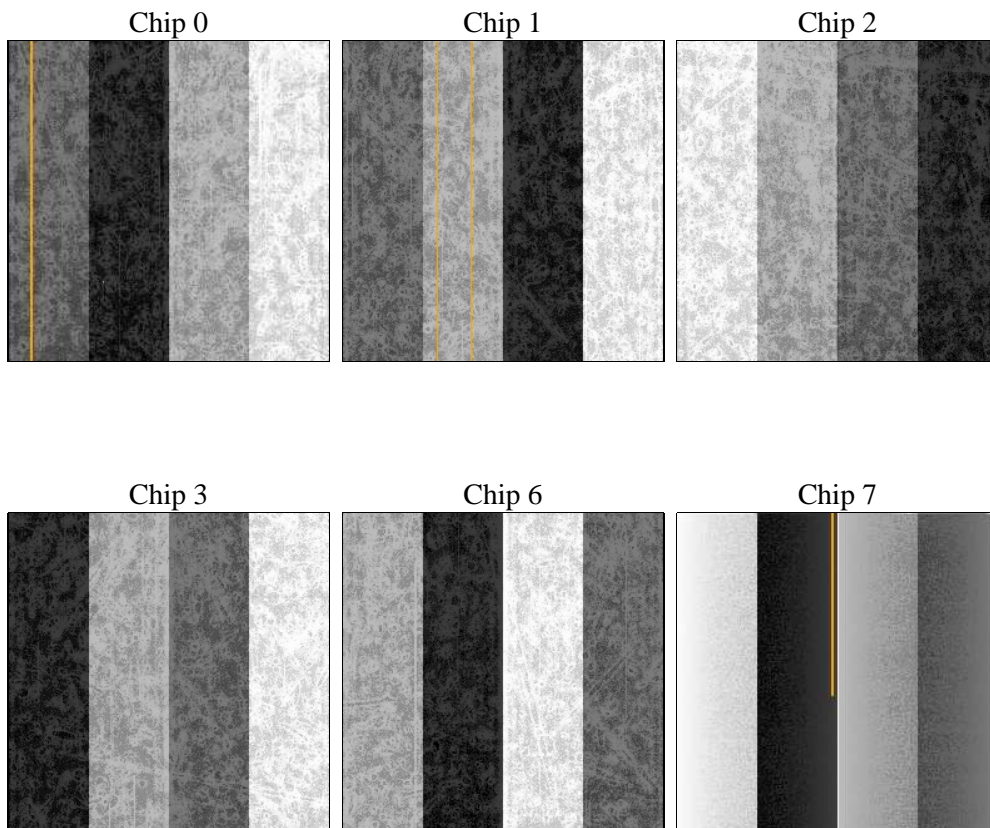
## 2 OBI

### 2.1 OBI

#### 2.1.1 Images



#### 2.1.2 Bias



### 2.1.3 Parameters

obi_num	0	Obi number	sched_exp_time	0.0	[s] Scheduled observation exposure time
ascdsver	8.4.3.1	Processing system revision	ontime	8274.2979283929	Sum of GTIs [s]
caldsver	4.4.9	&#160	ontime0	8274.2979283929	Sum of GTIs [s]
date	2012-04-06T21:24:12	Date and time of file creation	ontime1	8274.2720439434	Sum of GTIs [s]
revision	2	Processing version of data	ontime2	8274.2310039401	Sum of GTIs [s]
			ontime3	8274.2979283929	Sum of GTIs [s]
			ontime6	8274.1899639368	Sum of GTIs [s]
			ontime7	8274.2979283929	Sum of GTIs [s]
			l1events	1385808	Number of level 1 events

### 2.1.4 Events

	ccd 0	ccd 1	ccd 2	ccd 3	ccd 6	ccd 7		ccd 0	ccd 1	ccd 2	ccd 3	ccd 6	ccd 7
level 1 events	223508	224466	225639	230178	235065	246952	grade 0 events	84191	83648	86561	86992	86245	41341
rejected events	67874	68075	69835	73321	72820	60418		37%	37%	38%	37%	36%	16%
rejected %	30%	30%	30%	31%	30%	24%	grade 1 events	615	484	632	661	528	174
								0%	0%	0%	0%	0%	0%
							grade 2 events	27606	28323	26080	26650	28200	40123
								12%	12%	11%	11%	11%	16%
							grade 3 events	10219	10108	10258	10326	10112	17916
								4%	4%	4%	4%	4%	7%
							grade 4 events	10038	10058	10140	10445	10152	18044
								4%	4%	4%	4%	4%	7%
							grade 5 events	3748	3926	3636	4316	4303	10202
								1%	1%	1%	1%	1%	4%
							grade 6 events	23580	24254	22765	22444	27536	69110
								10%	10%	10%	9%	11%	27%
							grade 7 events	63511	63665	65567	68344	67989	50042
								28%	28%	29%	29%	28%	20%

## 2.2 Compared Parameters

Parameter	Planned	Actual
Instrument	ACIS	ACIS
Detector	ACIS-012367	ACIS-012367
Grating	NONE	NONE
Data mode	FAINT	FAINT
Observation mode	SECONDARY	SECONDARY
[deg] Pointing RA	0	295.3967580502444
[deg] Pointing Dec	0	2.071544085212027
[deg] Pointing Roll	0.0	230.67642059319
[mm] SIM focus pos	-0.782348	-0.7809083437167272
[mm] SIM defocus	0	0.7524282956875696
[mm] SIM translation stage pos	-233.592463	250.466033080201
[mm] SIM translation stage offset	0	-0.01005468664627074
[s] Observation start time (MET)	271444384.8633	271444383.83831
Observation start date	2006-08-08T17:13:05	2006-08-08T17:13:03
[s] Observation end time (MET)	271468242.764418	271468241.73942
Observation end date	2006-08-08T23:50:43	2006-08-08T23:50:41
Read mode	TIMED	TIMED

Parameter	Planned	Actual
Obspar format version number	7	7
Obspar file type	PREDICTED	ACTUAL
Obspar update status	NONE	UPDATED
On-chip summing requested	N	N
Subarray requested	NONE	NONE
Alternating exposures requested	N	N
[s] Primary exposure time	3.2	3.2

## **2.3 Star Slots**

## **2.4 FID Slots**

## A Summary

### A.1 Status

V&V Scientist	Jen Lauer
V&V Date (YYYY-MM-DD)	2012.04.08
V&V Edition	1
V&V Disposition and Status	OK
V&V Charge Time	8.2742979283929

### A.2 Comments