

V&V Reference Report

L2 ASCDS Version : 8.4.3.1

Observation 58736 - L2 Version 2
Chandra X-Ray Center

L2 Processing Date : Apr 11 2012

Contents

1	Front	2
2	OBI	3
2.1	OBI	3
2.1.1	Images	3
2.1.2	Bias	3
2.1.3	Parameters	4
2.1.4	Events	4
2.2	Compared Parameters	5
2.3	Star Slots	6
2.4	FID Slots	6
A	Summary	7
A.1	Status	7
A.2	Comments	7

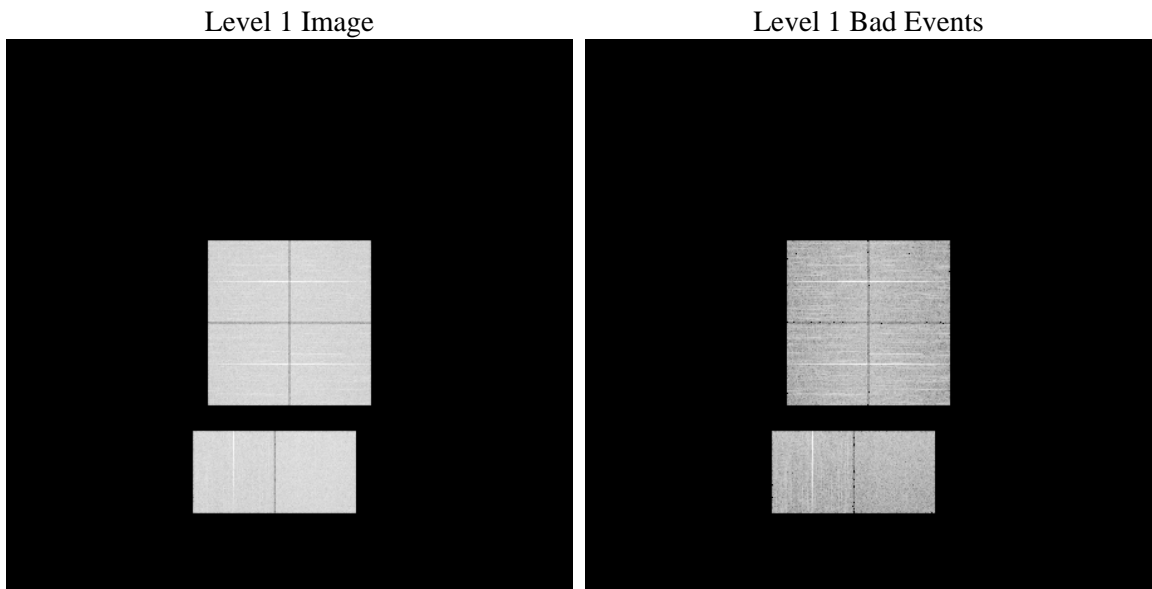
1 Front

seq_num	 	Sequence number
obs_id	58736	Observation id
title	ACIS-012367 diagnostics	Proposal title
observer	CHANDRA engineering request/realtime commanding	Principal investig
object	 	Source name
dtcycle	0	
cycle	P	events from which exps? Prim/Second/Both
ra_targ	0.0	Observer's specified target RA [deg]
dec_targ	0.0	Observer's specified target Dec [deg]
ra_nom	39.698782639984	Nominal RA [deg]
dec_nom	-22.511344989687	Nominal Dec [deg]
roll_nom	32.063811305591	Nominal Roll [deg]
revision	2	Processing version of data
ontime	8271.4734641314	Sum of GTIs [s]
livetime	8166.7350866451	Livetime [s]
ontime0	8271.4324241281	Sum of GTIs [s]
ontime1	8271.3913841248	Sum of GTIs [s]
ontime2	8271.3503441215	Sum of GTIs [s]
ontime3	8271.5145041347	Sum of GTIs [s]
ontime6	8268.0683735609	Sum of GTIs [s]
ontime7	8271.4734641314	Sum of GTIs [s]
l2events	847301	Number of level 2 events

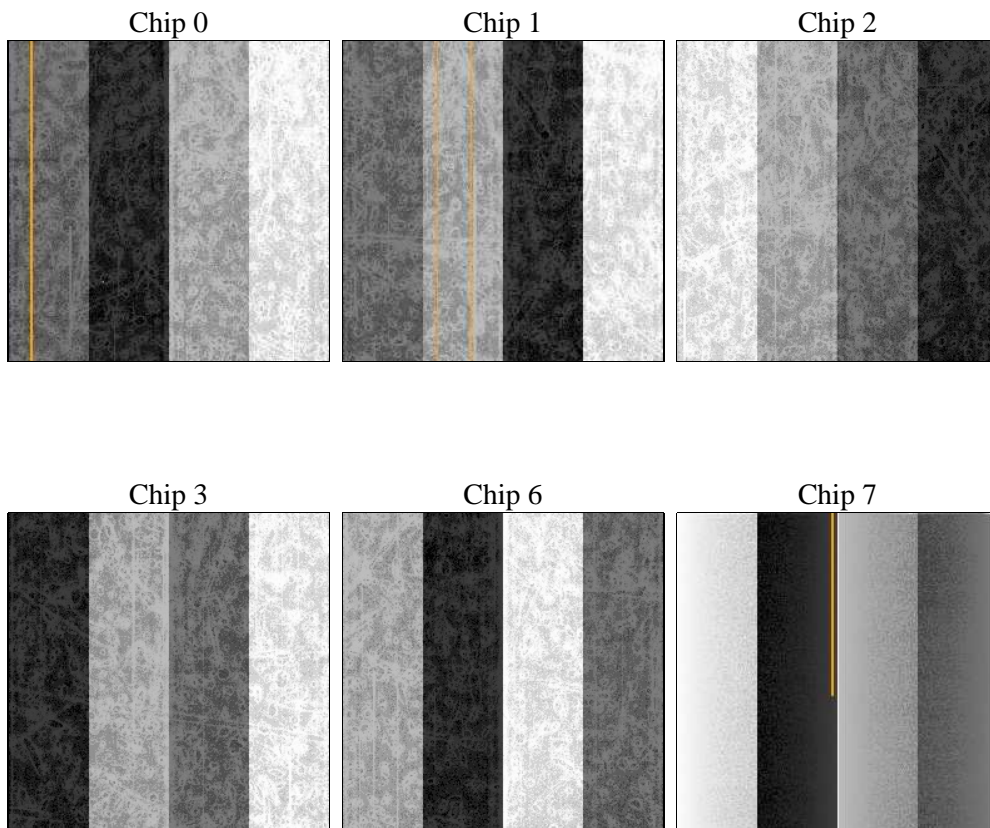
2 OBI

2.1 OBI

2.1.1 Images



2.1.2 Bias



2.1.3 Parameters

obi_num	0	Obi number	sched_exp_time	0.0	[s] Scheduled observation exposure time
ascdsver	8.4.3.1	Processing system revision	ontime	8271.4734641314	Sum of GTIs [s]
caldsver	4.4.9	 	ontime0	8271.4324241281	Sum of GTIs [s]
date	2012-04-11T17:30:45	Date and time of file creation	ontime1	8271.3913841248	Sum of GTIs [s]
revision	2	Processing version of data	ontime2	8271.3503441215	Sum of GTIs [s]
			ontime3	8271.5145041347	Sum of GTIs [s]
			ontime6	8268.0683735609	Sum of GTIs [s]
			ontime7	8271.4734641314	Sum of GTIs [s]
			l1events	1304612	Number of level 1 events

2.1.4 Events

	ccd 0	ccd 1	ccd 2	ccd 3	ccd 6	ccd 7		ccd 0	ccd 1	ccd 2	ccd 3	ccd 6	ccd 7
level 1 events	210187	208543	214328	217301	217674	236579	grade 0 events	76866	76853	79279	79931	78748	38069
rejected events	69007	66195	71848	73759	69822	61319		36%	36%	36%	36%	36%	16%
rejected %	32%	31%	33%	33%	32%	25%	grade 1 events	539	456	570	605	477	192
								0%	0%	0%	0%	0%	0%
							grade 2 events	24850	25814	23917	24436	25940	38072
								11%	12%	11%	11%	11%	16%
							grade 3 events	9306	9331	9455	9511	9350	17067
								4%	4%	4%	4%	4%	7%
							grade 4 events	9116	9211	9605	9645	9465	16874
								4%	4%	4%	4%	4%	7%
							grade 5 events	3900	4014	3704	4329	4190	10431
								1%	1%	1%	1%	1%	4%
							grade 6 events	21095	21193	20275	20083	24411	65252
								10%	10%	9%	9%	11%	27%
							grade 7 events	64515	61671	67523	68761	65093	50622
								30%	29%	31%	31%	29%	21%

2.2 Compared Parameters

Parameter	Planned	Actual	Parameter	Planned	Actual
Instrument	ACIS	ACIS	Obspar format version number	7	7
Detector	ACIS-012367	ACIS-012367	Obspar file type	PREDICTED	ACTUAL
Grating	NONE	NONE	Obspar update status	NONE	UPDATED
Data mode	FAINT	FAINT	On-chip summing requested	N	N
Observation mode	SECONDARY	SECONDARY	Subarray requested	NONE	NONE
[deg] Pointing RA	0	39.69878263998441	Alternating exposures requested	N	N
[deg] Pointing Dec	0	-22.51134498968653	[s] Primary exposure time	3.2	3.2
[deg] Pointing Roll	0.0	32.06381130559132			
[mm] SIM focus pos	-0.782348	-0.7809083437167272			
[mm] SIM defocus	0	0.7524282956875696			
[mm] SIM translation stage pos	-233.592463	250.466033080201			
[mm] SIM translation stage offset	0	-0.01005468664627074			
[s] Observation start time (MET)	277386094.892725	277386093.86771			
Observation start date	2006-10-16T11:41:35	2006-10-16T11:41:33			
[s] Observation end time (MET)	277407404.64373	277407403.61872			
Observation end date	2006-10-16T17:36:45	2006-10-16T17:36:43			
Read mode	TIMED	TIMED			

2.3 Star Slots

2.4 FID Slots

A Summary

A.1 Status

V&V Scientist	Beth Sundheim
V&V Date (YYYY-MM-DD)	2012.04.11
V&V Edition	1
V&V Disposition and Status	OK
V&V Charge Time	8.2714734641314

A.2 Comments