

V&V Reference Report

L2 ASCDS Version : 8.4.3.1

Observation 58729 - L2 Version 2
Chandra X-Ray Center

L2 Processing Date : Apr 12 2012

Contents

1	Front	2
2	OBI	3
2.1	OBI	3
2.1.1	Images	3
2.1.2	Bias	3
2.1.3	Parameters	4
2.1.4	Events	4
2.2	Compared Parameters	5
2.3	Star Slots	6
2.4	FID Slots	6
A	Summary	7
A.1	Status	7
A.2	Comments	7

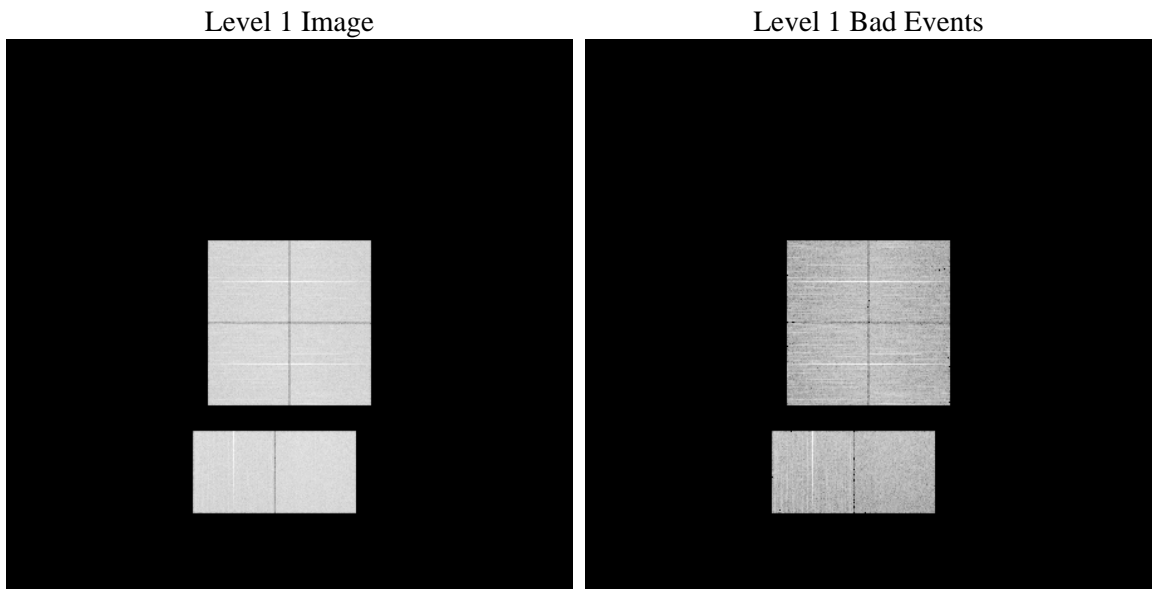
1 Front

seq_num	 	Sequence number
obs_id	58729	Observation id
title	ACIS-012367 diagnostics	Proposal title
observer	CHANDRA engineering request/realtime commanding	Principal investig
object	 	Source name
dtcycle	0	
cycle	P	events from which exps? Prim/Second/Both
ra_targ	0.0	Observer's specified target RA [deg]
dec_targ	0.0	Observer's specified target Dec [deg]
ra_nom	54.003350435317	Nominal RA [deg]
dec_nom	-1.972719514706	Nominal Dec [deg]
roll_nom	61.629467850804	Nominal Roll [deg]
revision	2	Processing version of data
ontime	7795.1999710202	Sum of GTIs [s]
livetime	7696.4924552813	Livetime [s]
ontime0	7795.1999710202	Sum of GTIs [s]
ontime1	7791.9589708447	Sum of GTIs [s]
ontime2	7795.1999710202	Sum of GTIs [s]
ontime3	7795.1999710202	Sum of GTIs [s]
ontime6	7795.1999710202	Sum of GTIs [s]
ontime7	7795.1999710202	Sum of GTIs [s]
l2events	829373	Number of level 2 events

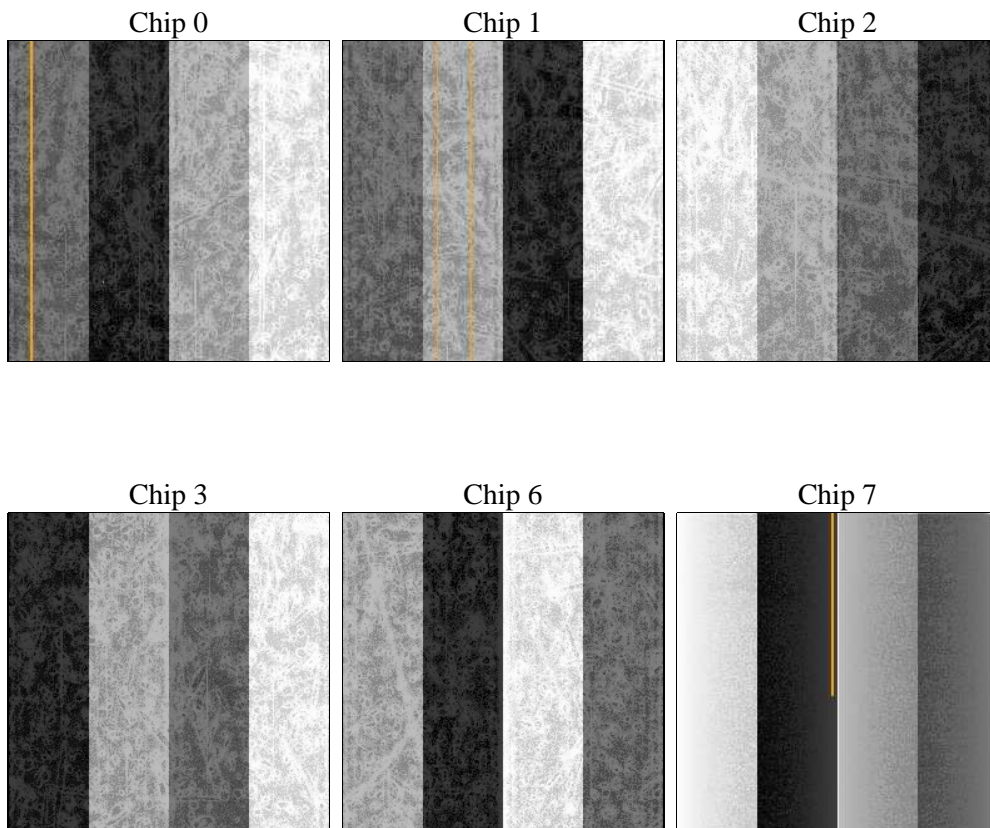
2 OBI

2.1 OBI

2.1.1 Images



2.1.2 Bias



2.1.3 Parameters

obi_num	1	Obi number	sched_exp_time	0.0	[s] Scheduled observation exposure time
ascdsver	8.4.3.1	Processing system revision	ontime	7795.1999710202	Sum of GTIs [s]
caldsver	4.4.9	 	ontime0	7795.1999710202	Sum of GTIs [s]
date	2012-04-12T09:06:26	Date and time of file creation	ontime1	7791.9589708447	Sum of GTIs [s]
revision	2	Processing version of data	ontime2	7795.1999710202	Sum of GTIs [s]
			ontime3	7795.1999710202	Sum of GTIs [s]
			ontime6	7795.1999710202	Sum of GTIs [s]
			ontime7	7795.1999710202	Sum of GTIs [s]
			l1events	1271594	Number of level 1 events

2.1.4 Events

	ccd 0	ccd 1	ccd 2	ccd 3	ccd 6	ccd 7		ccd 0	ccd 1	ccd 2	ccd 3	ccd 6	ccd 7
level 1 events	202531	203782	211181	210139	215944	228017	grade 0 events	74934	74795	77195	77542	77353	38432
rejected events	64213	64173	71523	70007	70501	57589		36%	36%	36%	36%	35%	16%
rejected %	31%	31%	33%	33%	32%	25%	grade 1 events	535	469	588	589	461	172
								0%	0%	0%	0%	0%	0%
							grade 2 events	24408	25395	23716	24029	25537	37237
								12%	12%	11%	11%	11%	16%
							grade 3 events	8993	8920	9333	9157	9199	16587
								4%	4%	4%	4%	4%	7%
							grade 4 events	8908	9178	9204	9295	9134	16451
								4%	4%	4%	4%	4%	7%
							grade 5 events	3494	3832	3484	4048	4169	9937
								1%	1%	1%	1%	1%	4%
							grade 6 events	21123	21395	20268	20176	24283	61776
								10%	10%	9%	9%	11%	27%
							grade 7 events	60136	59798	67393	65303	65808	47425
								29%	29%	31%	31%	30%	20%

2.2 Compared Parameters

Parameter	Planned	Actual
Instrument	ACIS	ACIS
Detector	ACIS-012367	ACIS-012367
Grating	NONE	NONE
Data mode	FAINT	FAINT
Observation mode	SECONDARY	SECONDARY
[deg] Pointing RA	0	54.00335043531703
[deg] Pointing Dec	0	-1.972719514705984
[deg] Pointing Roll	0.0	61.62946785080442
[mm] SIM focus pos	-0.782348	-0.6828225247311905
[mm] SIM defocus	0	0.8505141146731063
[mm] SIM translation stage pos	-233.592463	250.466033080201
[mm] SIM translation stage offset	0	-0.01005468664627074
[s] Observation start time (MET)	278028790.423018	278028789.39803
Observation start date	2006-10-23T22:13:10	2006-10-23T22:13:09
[s] Observation end time (MET)	278047429.023897	278047427.99891
Observation end date	2006-10-24T03:23:49	2006-10-24T03:23:47
Read mode	TIMED	TIMED

Parameter	Planned	Actual
Obspar format version number	7	7
Obspar file type	PREDICTED	ACTUAL
Obspar update status	NONE	UPDATED
On-chip summing requested	N	N
Subarray requested	NONE	NONE
Alternating exposures requested	N	N
[s] Primary exposure time	3.2	3.2

2.3 Star Slots

2.4 FID Slots

A Summary

A.1 Status

V&V Scientist	Beth Sundheim
V&V Date (YYYY-MM-DD)	2012.04.12
V&V Edition	1
V&V Disposition and Status	OK
V&V Charge Time	7.7951999710202

A.2 Comments