

V&V Reference Report

L2 ASCDS Version : 8.4.3.1

Observation 58722 - L2 Version 2
Chandra X-Ray Center

L2 Processing Date : Apr 12 2012

Contents

1	Front	2
2	OBI	3
2.1	OBI	3
2.1.1	Images	3
2.1.2	Bias	3
2.1.3	Parameters	4
2.1.4	Events	4
2.2	Compared Parameters	5
2.3	Star Slots	6
2.4	FID Slots	6
A	Summary	7
A.1	Status	7
A.2	Comments	7

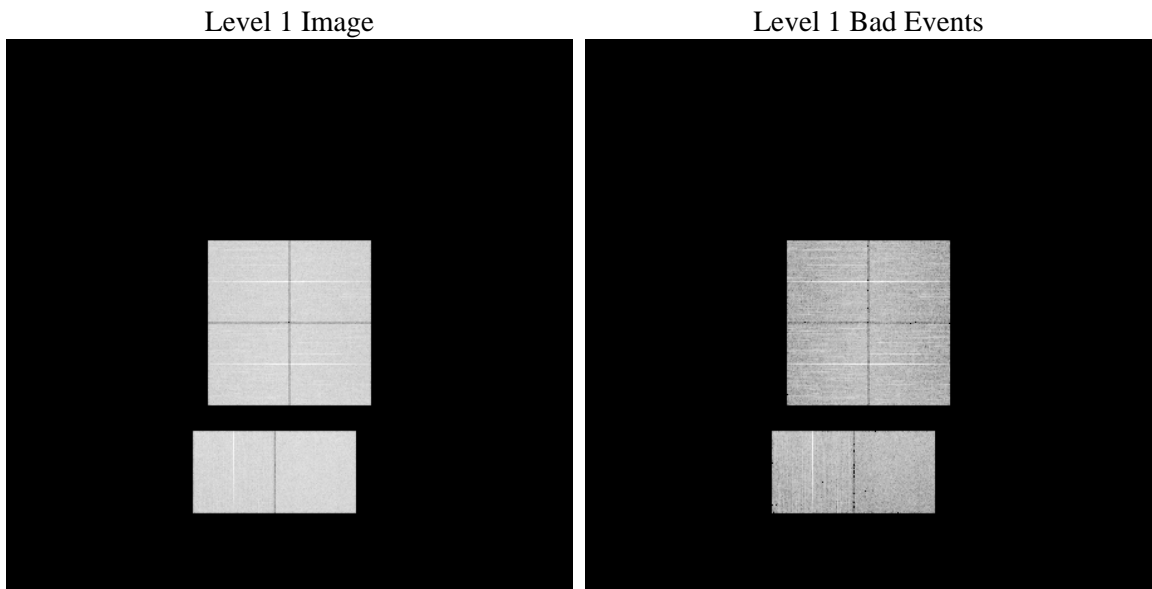
1 Front

seq_num	 	Sequence number
obs_id	58722	Observation id
title	ACIS-012367 diagnostics	Proposal title
observer	CHANDRA engineering request/realtime commanding	Principal investig
object	 	Source name
dtcycle	0	
cycle	P	events from which exps? Prim/Second/Both
ra_targ	0.0	Observer's specified target RA [deg]
dec_targ	0.0	Observer's specified target Dec [deg]
ra_nom	6.1110976370015	Nominal RA [deg]
dec_nom	1.6806638771239	Nominal Dec [deg]
roll_nom	294.96257068101	Nominal Roll [deg]
revision	2	Processing version of data
ontime	7797.8068279028	Sum of GTIs [s]
livetime	7699.0663025723	Livetime [s]
ontime0	7797.7657878995	Sum of GTIs [s]
ontime1	7797.7247478962	Sum of GTIs [s]
ontime2	7797.6837078929	Sum of GTIs [s]
ontime3	7797.8478679061	Sum of GTIs [s]
ontime6	7797.6426678896	Sum of GTIs [s]
ontime7	7797.8068279028	Sum of GTIs [s]
l2events	789990	Number of level 2 events

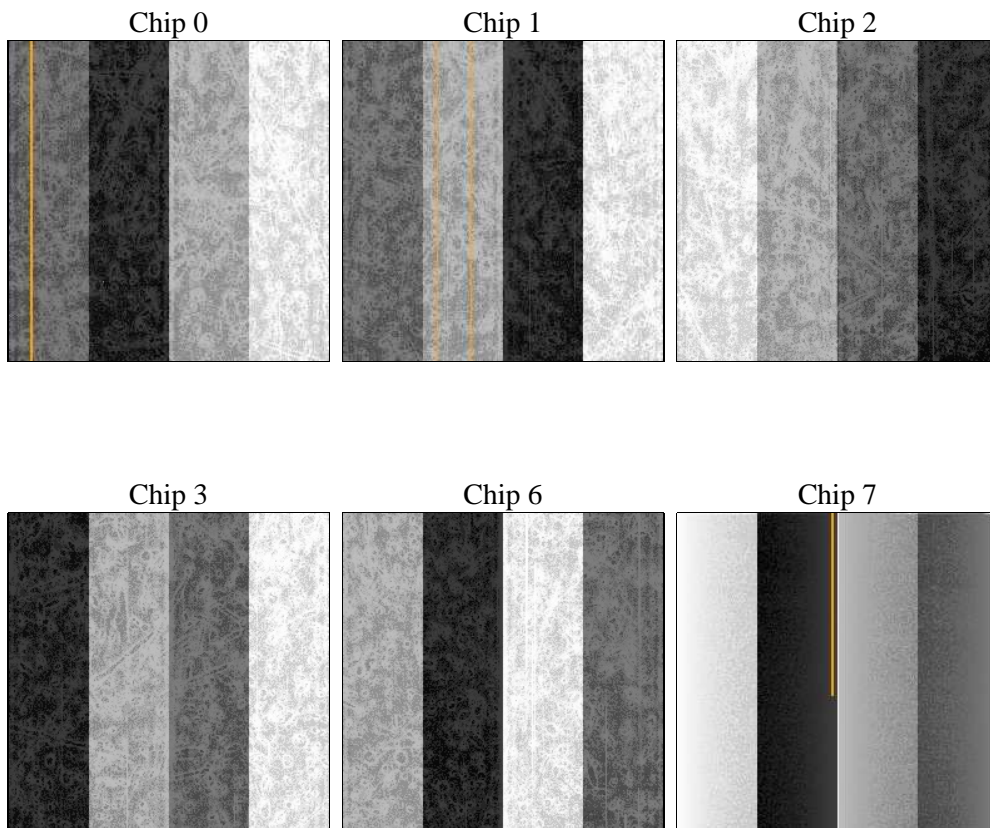
2 OBI

2.1 OBI

2.1.1 Images



2.1.2 Bias



2.1.3 Parameters

obi_num	1	Obi number	sched_exp_time	0.0	[s] Scheduled observation exposure time
ascdsver	8.4.3.1	Processing system revision	ontime	7797.8068279028	Sum of GTIs [s]
caldsver	4.4.9	 	ontime0	7797.7657878995	Sum of GTIs [s]
date	2012-04-12T11:09:33	Date and time of file creation	ontime1	7797.7247478962	Sum of GTIs [s]
revision	2	Processing version of data	ontime2	7797.6837078929	Sum of GTIs [s]
			ontime3	7797.8478679061	Sum of GTIs [s]
			ontime6	7797.6426678896	Sum of GTIs [s]
			ontime7	7797.8068279028	Sum of GTIs [s]
			l1events	1224144	Number of level 1 events

2.1.4 Events

	ccd 0	ccd 1	ccd 2	ccd 3	ccd 6	ccd 7		ccd 0	ccd 1	ccd 2	ccd 3	ccd 6	ccd 7
level 1 events	196247	194577	203863	201418	207928	220111	grade 0 events	72058	71481	74460	74307	73843	36081
rejected events	64672	61864	70272	67638	70324	57047		36%	36%	36%	36%	35%	16%
rejected %	32%	31%	34%	33%	33%	25%	grade 1 events	523	417	511	516	464	147
								0%	0%	0%	0%	0%	0%
							grade 2 events	23133	24266	22512	22862	23956	35379
								11%	12%	11%	11%	11%	16%
							grade 3 events	8658	8651	8774	8858	8716	15878
								4%	4%	4%	4%	4%	7%
							grade 4 events	8583	8677	8877	9026	8727	15875
								4%	4%	4%	4%	4%	7%
							grade 5 events	3550	3709	3353	4070	3974	9874
								1%	1%	1%	2%	1%	4%
							grade 6 events	19143	19638	18968	18727	22362	59851
								9%	10%	9%	9%	10%	27%
							grade 7 events	60599	57738	66408	63052	65886	47026
								30%	29%	32%	31%	31%	21%

2.2 Compared Parameters

Parameter	Planned	Actual
Instrument	ACIS	ACIS
Detector	ACIS-012367	ACIS-012367
Grating	NONE	NONE
Data mode	FAINT	FAINT
Observation mode	SECONDARY	SECONDARY
[deg] Pointing RA	0	6.111097637001535
[deg] Pointing Dec	0	1.680663877123864
[deg] Pointing Roll	0.0	294.9625706810131
[mm] SIM focus pos	-0.782348	-0.7809083437167272
[mm] SIM defocus	0	0.7524282956875696
[mm] SIM translation stage pos	-233.592463	250.466033080201
[mm] SIM translation stage offset	0	-0.01005468664627074
[s] Observation start time (MET)	278486744.044638	278486743.01964
Observation start date	2006-10-29T05:25:44	2006-10-29T05:25:43
[s] Observation end time (MET)	278496563.545102	278496562.5201
Observation end date	2006-10-29T08:09:24	2006-10-29T08:09:22
Read mode	TIMED	TIMED

Parameter	Planned	Actual
Obspar format version number	7	7
Obspar file type	PREDICTED	ACTUAL
Obspar update status	NONE	UPDATED
On-chip summing requested	N	N
Subarray requested	NONE	NONE
Alternating exposures requested	N	N
[s] Primary exposure time	3.2	3.2

2.3 Star Slots

2.4 FID Slots

A Summary

A.1 Status

V&V Scientist	Jen Lauer
V&V Date (YYYY-MM-DD)	2012.04.12
V&V Edition	1
V&V Disposition and Status	OK
V&V Charge Time	7.7978068279028

A.2 Comments