

V&V Reference Report

L2 ASCDS Version : 8.4.3.1

Observation 58698 - L2 Version 2
Chandra X-Ray Center

L2 Processing Date : Apr 13 2012

Contents

1	Front	2
2	OBI	3
2.1	OBI	3
2.1.1	Images	3
2.1.2	Bias	3
2.1.3	Parameters	4
2.1.4	Events	4
2.2	Compared Parameters	5
2.3	Star Slots	6
2.4	FID Slots	6
A	Summary	7
A.1	Status	7
A.2	Comments	7

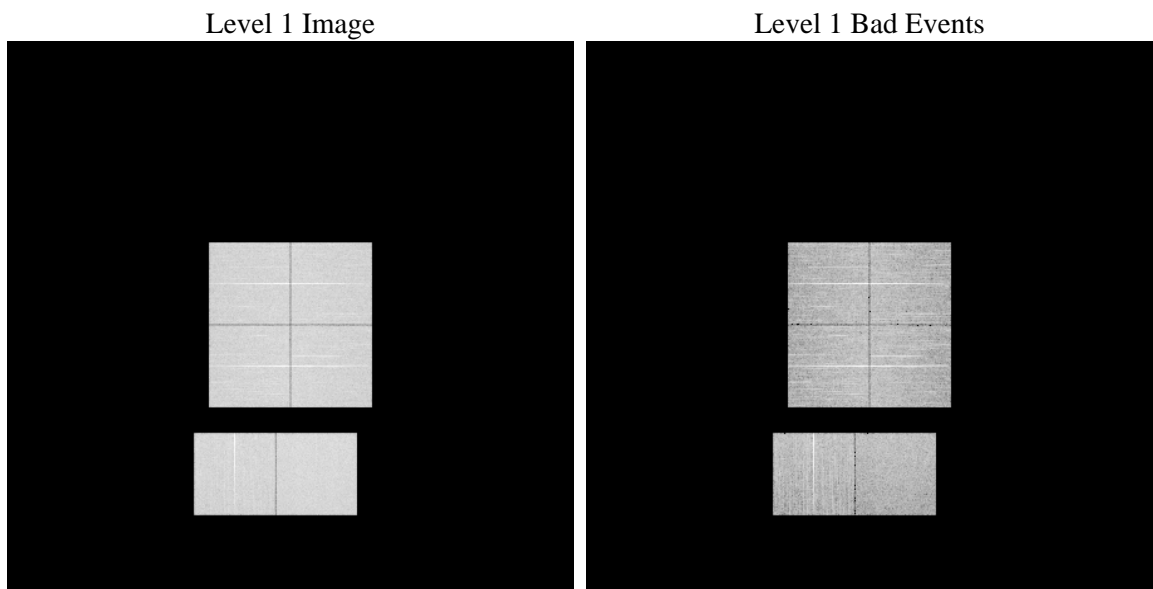
1 Front

seq_num	 	Sequence number
obs_id	58698	Observation id
title	ACIS-012367 diagnostics	Proposal title
observer	CHANDRA engineering request/realtime commanding	Principal investig
object	 	Source name
dtcycle	0	
cycle	P	events from which exps? Prim/Second/Both
ra_targ	0.0	Observer's specified target RA [deg]
dec_targ	0.0	Observer's specified target Dec [deg]
ra_nom	79.969187482476	Nominal RA [deg]
dec_nom	36.014109021632	Nominal Dec [deg]
roll_nom	117.65272244276	Nominal Roll [deg]
revision	2	Processing version of data
ontime	8172.7999696136	Sum of GTIs [s]
livetime	8069.311055329	Livetime [s]
ontime0	8172.7999696136	Sum of GTIs [s]
ontime1	8172.7999696136	Sum of GTIs [s]
ontime2	8172.7999696136	Sum of GTIs [s]
ontime3	8172.7999696136	Sum of GTIs [s]
ontime6	8172.7999696136	Sum of GTIs [s]
ontime7	8172.7999696136	Sum of GTIs [s]
l2events	812956	Number of level 2 events

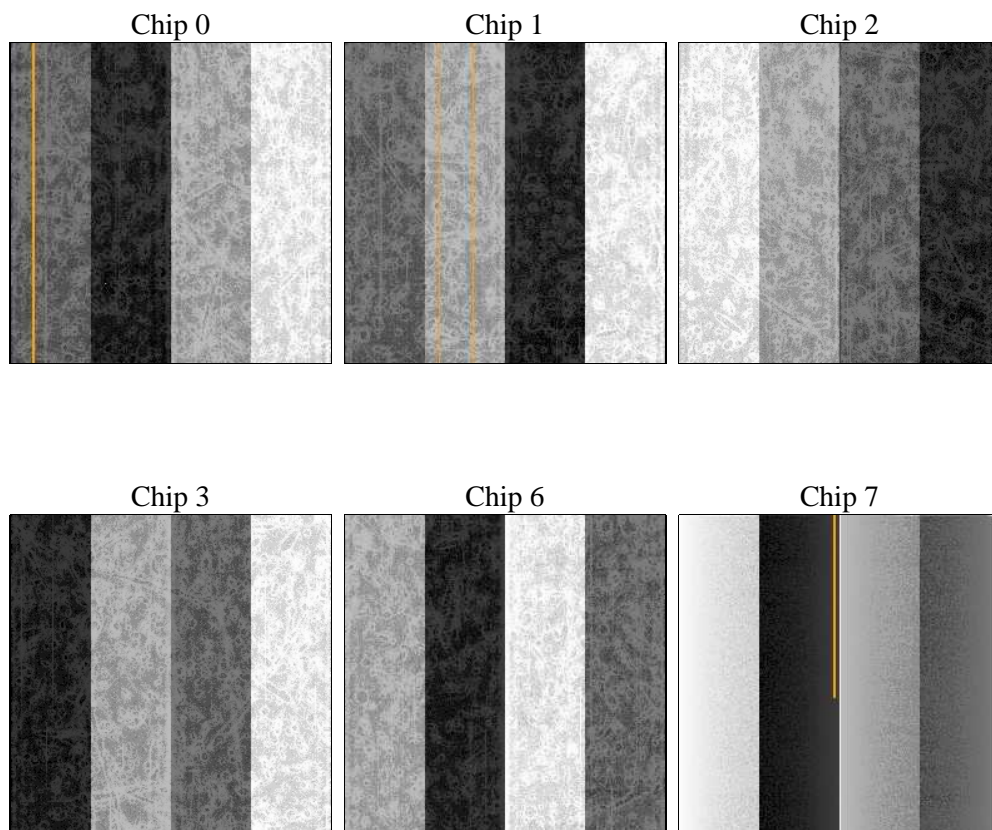
2 OBI

2.1 OBI

2.1.1 Images



2.1.2 Bias



2.1.3 Parameters

obi_num	0	Obi number	sched_exp_time	0.0	[s] Scheduled observation exposure time
ascdsver	8.4.3.1	Processing system revision	ontime	8172.7999696136	Sum of GTIs [s]
caldsver	4.4.9	 	ontime0	8172.7999696136	Sum of GTIs [s]
date	2012-04-13T16:49:51	Date and time of file creation	ontime1	8172.7999696136	Sum of GTIs [s]
revision	2	Processing version of data	ontime2	8172.7999696136	Sum of GTIs [s]
			ontime3	8172.7999696136	Sum of GTIs [s]
			ontime6	8172.7999696136	Sum of GTIs [s]
			ontime7	8172.7999696136	Sum of GTIs [s]
			l1events	1280262	Number of level 1 events

2.1.4 Events

	ccd 0	ccd 1	ccd 2	ccd 3	ccd 6	ccd 7		ccd 0	ccd 1	ccd 2	ccd 3	ccd 6	ccd 7
level 1 events	205831	206077	212290	209513	216821	229730	grade 0 events	74901	74219	76752	76760	77160	36944
rejected events	69447	69367	75423	72606	74732	62166		36%	36%	36%	36%	35%	16%
rejected %	33%	33%	35%	34%	34%	27%	grade 1 events	515	419	574	572	463	170
								0%	0%	0%	0%	0%	0%
							grade 2 events	24569	24998	23384	23834	25080	36451
								11%	12%	11%	11%	11%	15%
							grade 3 events	8977	9009	9291	9213	9118	16575
								4%	4%	4%	4%	4%	7%
							grade 4 events	9096	9039	9222	9315	9091	16301
								4%	4%	4%	4%	4%	7%
							grade 5 events	3700	3959	3557	4276	4171	10060
								1%	1%	1%	2%	1%	4%
							grade 6 events	20501	21095	19858	19434	23432	63381
								9%	10%	9%	9%	10%	27%
							grade 7 events	63572	63339	69652	66109	68306	49848
								30%	30%	32%	31%	31%	21%

2.2 Compared Parameters

Parameter	Planned	Actual	Parameter	Planned	Actual
Instrument	ACIS	ACIS	Obspar format version number	7	7
Detector	ACIS-012367	ACIS-012367	Obspar file type	PREDICTED	ACTUAL
Grating	NONE	NONE	Obspar update status	NONE	UPDATED
Data mode	FAINT	FAINT	On-chip summing requested	N	N
Observation mode	SECONDARY	SECONDARY	Subarray requested	NONE	NONE
[deg] Pointing RA	0	79.96918748247597	Alternating exposures requested	N	N
[deg] Pointing Dec	0	36.01410902163231	[s] Primary exposure time	3.2	3.2
[deg] Pointing Roll	0.0	117.6527224427572			
[mm] SIM focus pos	-0.782348	-0.7809083437167272			
[mm] SIM defocus	0	0.7524282956875696			
[mm] SIM translation stage pos	-233.592463	250.466033080201			
[mm] SIM translation stage offset	0	-0.01005468664627074			
[s] Observation start time (MET)	280126477.622057	280126476.59707			
Observation start date	2006-11-17T04:54:38	2006-11-17T04:54:36			
[s] Observation end time (MET)	280147787.373064	280147786.34807			
Observation end date	2006-11-17T10:49:47	2006-11-17T10:49:46			
Read mode	TIMED	TIMED			

2.3 Star Slots

2.4 FID Slots

A Summary

A.1 Status

V&V Scientist	Beth Sundheim
V&V Date (YYYY-MM-DD)	2012.04.16
V&V Edition	1
V&V Disposition and Status	OK
V&V Charge Time	8.1727999696136

A.2 Comments