

V&V Reference Report

L2 ASCDS Version : 8.5.1.1

Observation 62829 - L2 Version 3
Chandra X-Ray Center

L2 Processing Date : Dec 27 2012

Contents

1	Front	2
2	OBI	3
2.1	OBI	3
2.1.1	Images	3
2.1.2	Bias	3
2.1.3	Parameters	4
2.1.4	Events	4
2.2	Compared Parameters	5
2.3	Star Slots	6
2.4	FID Slots	6
A	Summary	7
A.1	Status	7
A.2	Comments	7

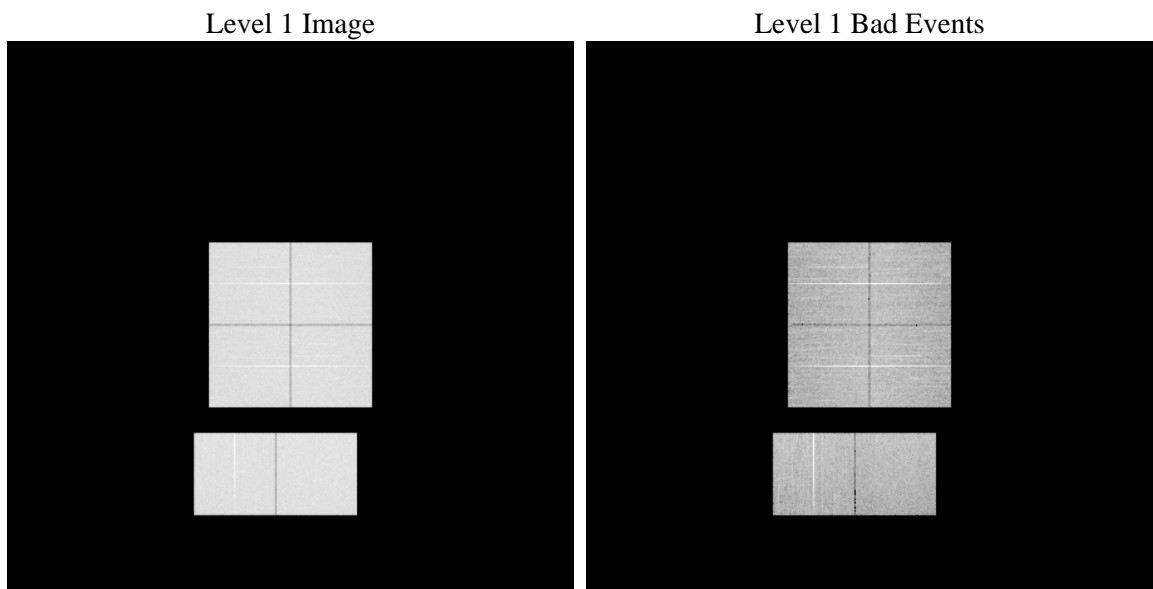
1 Front

seq_num	 	Sequence number
obs_id	62829	Observation id
title	ACIS-012367 diagnostics	Proposal title
observer	CHANDRA engineering request/realtime commanding	Principal investig
object	 	Source name
dtcycle	0	
cycle	P	events from which exps? Prim/Second/Both
ra_targ	0.0	Observer's specified target RA [deg]
dec_targ	0.0	Observer's specified target Dec [deg]
ra_nom	266.41696799548	Nominal RA [deg]
dec_nom	-29.012464805372	Nominal Dec [deg]
roll_nom	274.7205270053	Nominal Roll [deg]
revision	3	Processing version of data
ontime	15273.345016658	Sum of GTIs [s]
livetime	15079.944725553	Livetime [s]
ontime0	15109.566874981	Sum of GTIs [s]
ontime1	15257.058074981	Sum of GTIs [s]
ontime2	14710.926409632	Sum of GTIs [s]
ontime3	15051.229449034	Sum of GTIs [s]
ontime6	15273.180856675	Sum of GTIs [s]
ontime7	15273.345016658	Sum of GTIs [s]
l2events	2023038	Number of level 2 events

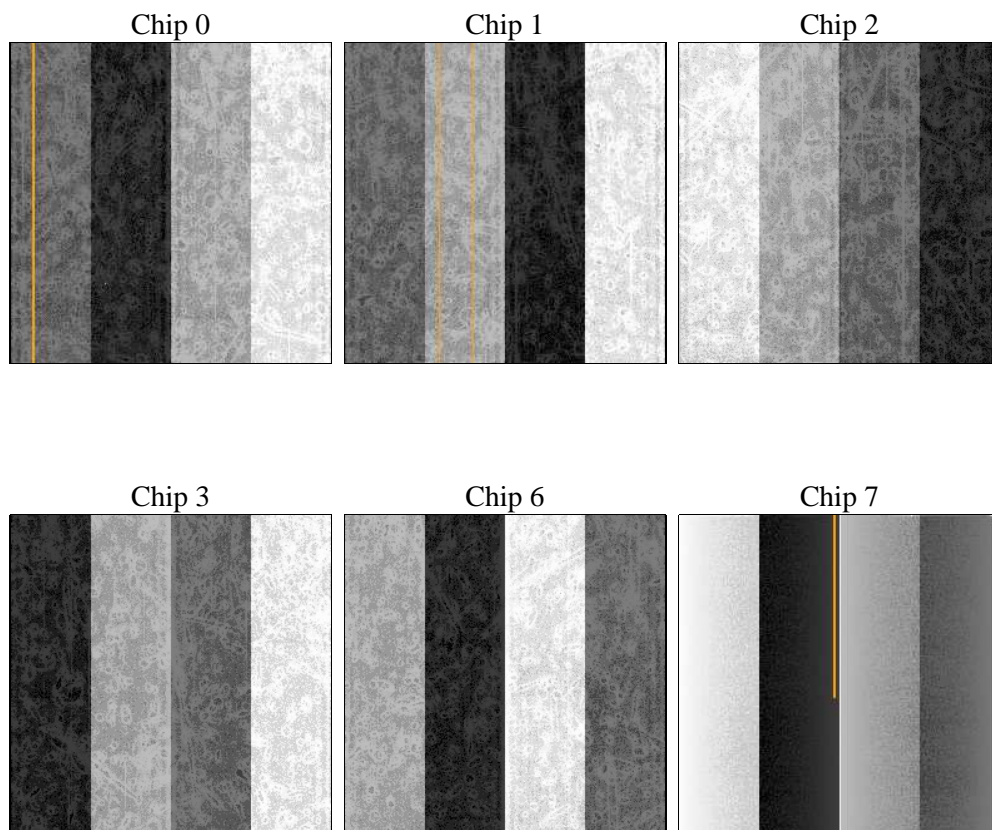
2 OBI

2.1 OBI

2.1.1 Images



2.1.2 Bias



2.1.3 Parameters

obi_num	0	Obi number	sched_exp_time	0.0	[s] Scheduled observation exposure time
ascdsver	8.5.1.1	Processing system revision	ontime	15273.345016658	Sum of GTIs [s]
caldbver	4.5.5	 	ontime0	15109.566874981	Sum of GTIs [s]
date	2012-12-27T04:26:41	Date and time of file creation	ontime1	15257.058074981	Sum of GTIs [s]
revision	3	Processing version of data	ontime2	14710.926409632	Sum of GTIs [s]
			ontime3	15051.229449034	Sum of GTIs [s]
			ontime6	15273.180856675	Sum of GTIs [s]
			ontime7	15273.345016658	Sum of GTIs [s]
			l1events	2712382	Number of level 1 events

2.1.4 Events

	ccd 0	ccd 1	ccd 2	ccd 3	ccd 6	ccd 7		ccd 0	ccd 1	ccd 2	ccd 3	ccd 6	ccd 7
level 1 events	438415	443573	435944	446923	467802	479725	grade 0 events	188291	188458	188461	194137	196511	92545
rejected events	95910	97029	97690	101197	104319	88809		42%	42%	43%	43%	42%	19%
rejected %	21%	21%	22%	22%	22%	18%	grade 1 events	1052	976	1159	1082	991	268
								0%	0%	0%	0%	0%	0%
							grade 2 events	59960	62034	57463	58665	62735	85778
								13%	13%	13%	13%	13%	17%
							grade 3 events	22237	22516	22157	22486	22956	38639
								5%	5%	5%	5%	4%	8%
							grade 4 events	22240	22213	22228	22533	22823	38809
								5%	5%	5%	5%	4%	8%
							grade 5 events	6114	6381	5664	6481	6766	15936
								1%	1%	1%	1%	1%	3%
							grade 6 events	49777	51323	47945	47905	58519	135145
								11%	11%	10%	10%	12%	28%
							grade 7 events	88744	89672	90867	93634	96501	72605
								20%	20%	20%	20%	20%	15%

2.2 Compared Parameters

Parameter	Planned	Actual
Instrument	ACIS	ACIS
Detector	ACIS-012367	ACIS-012367
Grating	NONE	NONE
Data mode	FAINT	FAINT
Observation mode	SECONDARY	SECONDARY
[deg] Pointing RA	0	266.4169679954792
[deg] Pointing Dec	0	-29.01246480537204
[deg] Pointing Roll	0.0	274.7205270052959
[mm] SIM focus pos	-0.782348	-0.7809083437167272
[mm] SIM defocus	0	0.7524282956875696
[mm] SIM translation stage pos	-233.592463	250.4635187648994
[mm] SIM translation stage offset	0	-0.007540371344731511
[s] Observation start time (MET)	239405626.27704	239405625.25205
Observation start date	2005-08-02T21:33:46	2005-08-02T21:33:45
[s] Observation end time (MET)	239432464.878268	239432463.85327
Observation end date	2005-08-03T05:01:05	2005-08-03T05:01:03
Read mode	TIMED	TIMED

Parameter	Planned	Actual
Obspar format version number	7	7
Obspar file type	PREDICTED	ACTUAL
Obspar update status	NONE	UPDATED
On-chip summing requested	N	N
Subarray requested	NONE	NONE
Alternating exposures requested	N	N
[s] Primary exposure time	3.2	3.2

2.3 Star Slots

2.4 FID Slots

A Summary

A.1 Status

V&V Scientist	Beth Sundheim
V&V Date (YYYY-MM-DD)	2013.01.23
V&V Edition	1
V&V Disposition and Status	OK
V&V Charge Time	15.273345016658

A.2 Comments