

# V&V Reference Report

## L2 ASCDS Version : 7.6.7.1

Observation 59881 - L2 Version 002  
Chandra X-Ray Center

L2 Processing Date : Mar 16 2006

## Contents

<b>1</b>	<b>Front</b>	<b>2</b>
<b>2</b>	<b>OBI</b>	<b>3</b>
2.1	OBI . . . . .	3
2.1.1	Images . . . . .	3
2.1.2	Bias . . . . .	3
2.1.3	Parameters . . . . .	4
2.1.4	Events . . . . .	4
2.2	Compared Parameters . . . . .	5
2.3	Aspect . . . . .	6
2.4	Star Slots . . . . .	8
2.5	FID Slots . . . . .	8
<b>A</b>	<b>Summary</b>	<b>9</b>
A.1	Status . . . . .	9
A.2	Comments . . . . .	9

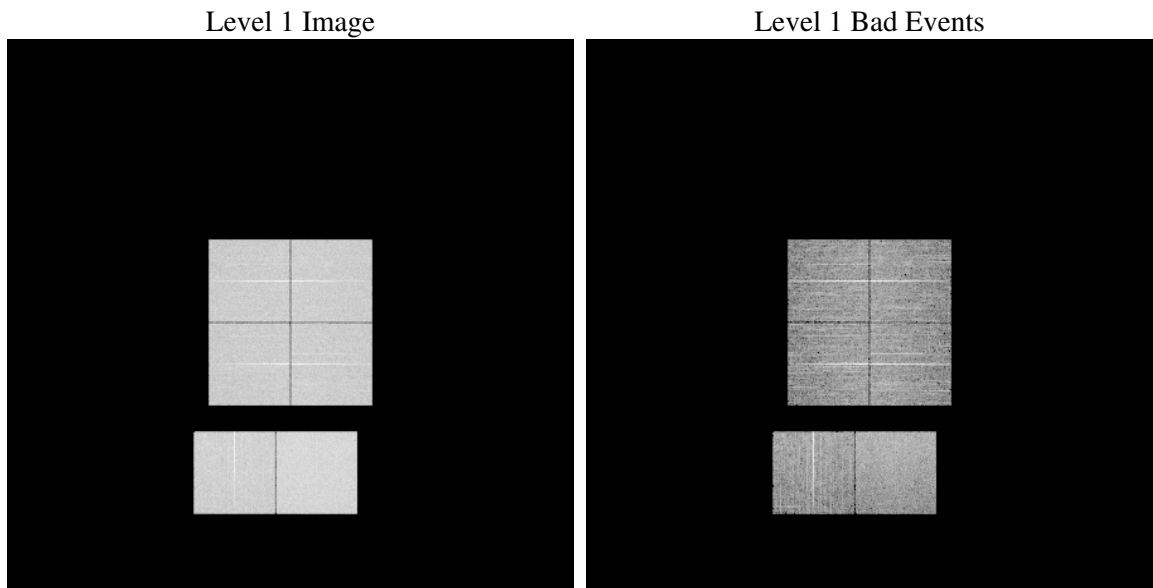
# 1 Front

seq_num	&#160
obs_id	59881
title	ACIS-012367 diagnostics
observer	CHANDRA engineering request/realtime commanding
object	&#160
dtcycle	0
cycle	P
ra_targ	0.0
dec_targ	0.0
ra_nom	108.96517787536
dec_nom	33.997942030691
roll_nom	148.87721088237
revision	2
ontime	8283.8901820481
livetime	8178.9945766032
ontime0	7065.3243215978
ontime1	7204.7266874909
ontime2	6870.9476859272
ontime3	6948.5669226646
ontime6	7473.7696801126
ontime7	8283.8901820481
l2events	1119612

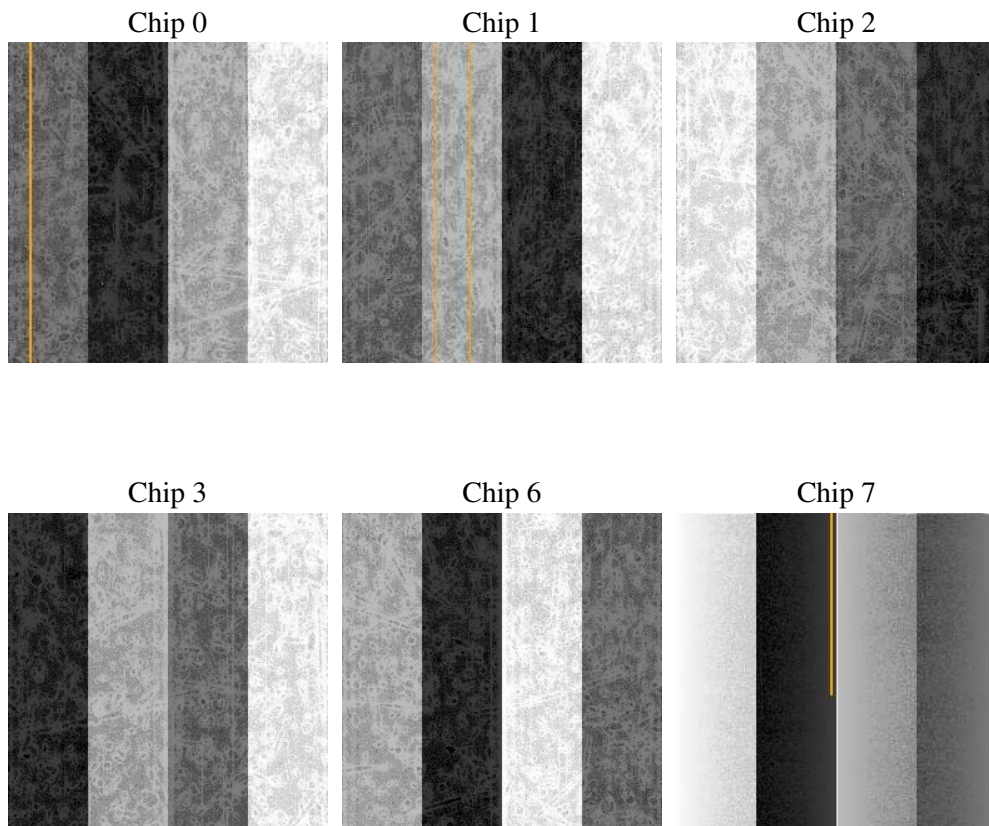
## 2 OBI

### 2.1 OBI

#### 2.1.1 Images



#### 2.1.2 Bias



### 2.1.3 Parameters

obi_num	0
ascdsver	7.6.7.1
caldbver	3.2.1
date	2006-03-16T10:10:22
revision	2

sched_exp_time	0.0
ontime	8284.0137831271
ontime0	7065.4068826735
ontime1	7204.7682085633
ontime2	6870.9481669962
ontime3	6948.7315637469
ontime6	7473.7696801126
ontime7	8284.0137831271
l1events	1495779

### 2.1.4 Events

	ccd 0	ccd 1	ccd 2	ccd 3	ccd 6	ccd 7
level 1 events	234614	238942	231910	237293	258403	294617
rejected events	50112	49817	50493	52688	54147	61879
rejected %	21%	20%	21%	22%	20%	21%

	ccd 0	ccd 1	ccd 2	ccd 3	ccd 6	ccd 7
grade 0 events	101578	103660	101529	103384	110732	38535
	43%	43%	43%	43%	42%	13%
grade 1 events	612	516	643	693	579	121
	0%	0%	0%	0%	0%	0%
grade 2 events	32304	33697	30844	31450	35068	70707
	13%	14%	13%	13%	13%	23%
grade 3 events	11921	11895	11686	12121	12980	16198
	5%	4%	5%	5%	5%	5%
grade 4 events	11944	12110	11854	11971	12786	16338
	5%	5%	5%	5%	4%	5%
grade 5 events	3206	3268	2818	3233	3595	7232
	1%	1%	1%	1%	1%	2%
grade 6 events	26755	27763	25504	25679	32690	90960
	11%	11%	10%	10%	12%	30%
grade 7 events	46294	46033	47032	48762	49973	54526
	19%	19%	20%	20%	19%	18%

## 2.2 Compared Parameters

Parameter	Planned	Actual	Parameter	Planned	Actual
Instrument	ACIS	ACIS	Obspar format version number	6	6
Detector	ACIS-012367	ACIS-012367	Obspar file type	PREDICTED	ACTUAL
Grating	NONE	NONE	Obspar update status	NONE	UPDATED
Data mode	FAINT	FAINT	On-chip summing requested	N	N
Observation mode	SECONDARY	SECONDARY	Subarray requested	NONE	NONE
Pointing RA	0	108.9651778753551	Alternating exposures requested	N	N
Pointing Dec	0	33.99794203069101	Primary exposure time	3.2	3.2
Pointing Roll	0.0	148.8772108823668			
SIM focus pos (mm)	-0.782348	-0.6828225247311905			
SIM defocus (mm)	0	0.8505141146731063			
SIM translation stage pos (mm)	-233.592463	250.466033080201			
SIM translation stage offset (mm)	0	-0.01005468664627074			
Observation start time	220952509.438247	220952508.41325			
Observation start date	2005-01-01T07:41:49	2005-01-01T07:41:48			
Observation end time	220976250.489317	220976249.46432			
Observation end date	2005-01-01T14:17:30	2005-01-01T14:17:29			
Read mode	TIMED	TIMED			

## 2.3 Aspect



## 2.4 Star Slots

## 2.5 FID Slots



## A Summary

### A.1 Status

V&V Scientist	Jen Lauer
V&V Date (YYYY-MM-DD)	2006.03.16
V&V Edition	1
V&V Disposition and Status	OK
V&V Charge Time	8.28389018

### A.2 Comments