

# V&V Reference Report

## L2 ASCDS Version : 7.6.7.1

Observation 59879 - L2 Version 002  
Chandra X-Ray Center

L2 Processing Date : Mar 16 2006

## Contents

<b>1</b>	<b>Front</b>	<b>2</b>
<b>2</b>	<b>OBI</b>	<b>3</b>
2.1	OBI . . . . .	3
2.1.1	Images . . . . .	3
2.1.2	Bias . . . . .	3
2.1.3	Parameters . . . . .	4
2.1.4	Events . . . . .	4
2.2	Compared Parameters . . . . .	5
2.3	Aspect . . . . .	6
2.4	Star Slots . . . . .	8
2.5	FID Slots . . . . .	8
<b>A</b>	<b>Summary</b>	<b>9</b>
A.1	Status . . . . .	9
A.2	Comments . . . . .	9

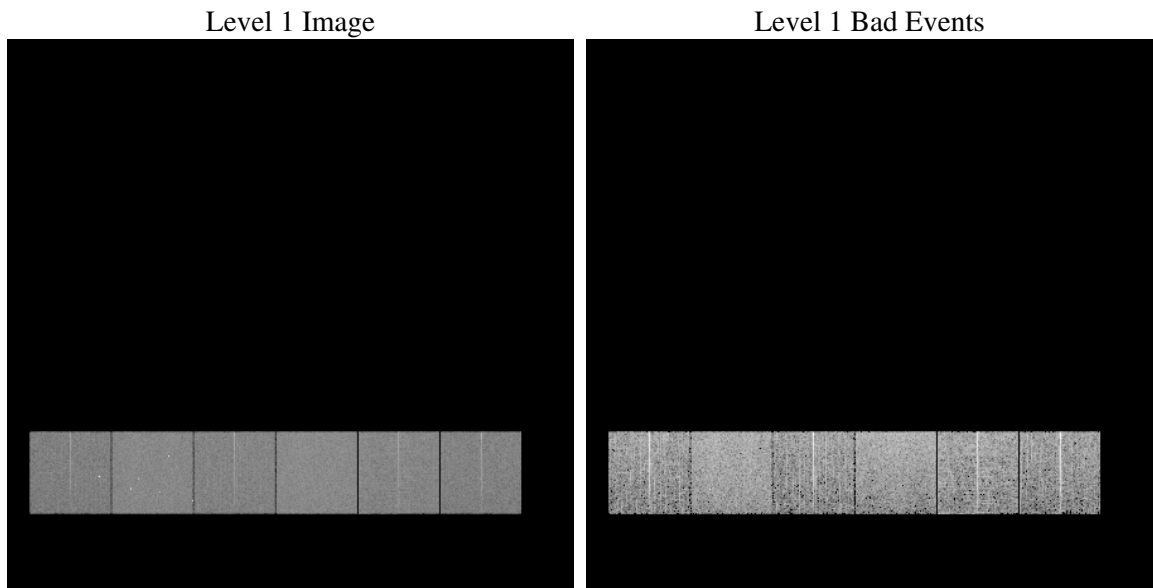
# 1 Front

seq_num	&#160
obs_id	59879
title	ACIS-456789 diagnostics
observer	CHANDRA engineering request/realtime commanding
object	&#160
dtcycle	0
cycle	P
ra_targ	0.0
dec_targ	0.0
ra_nom	133.00241647081
dec_nom	6.5275439456887
roll_nom	56.520519917359
revision	2
ontime	4959.9999815226
livetime	4897.1934752031
ontime4	3953.4734424651
ontime5	4959.9999815226
ontime6	4276.1538318098
ontime7	4959.9999815226
ontime8	4360.4195673764
ontime9	4133.5512868166
l2events	670264

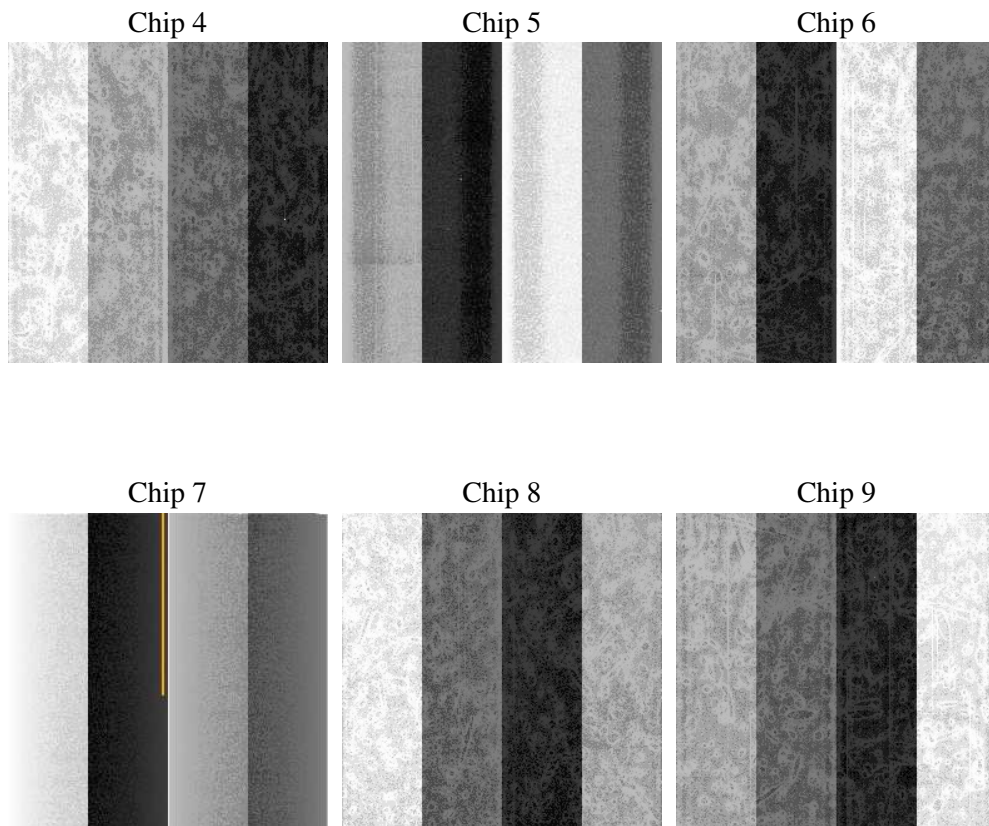
## 2 OBI

### 2.1 OBI

#### 2.1.1 Images



#### 2.1.2 Bias



### 2.1.3 Parameters

obi_num	0
ascdsver	7.6.7.1
caldsver	3.2.1
date	2006-03-16T19:00:25
revision	2

sched_exp_time	0.0
ontime	4961.9813134968
ontime4	3954.0373850763
ontime5	4961.9813134968
ontime6	4278.135163784
ontime7	4961.9813134968
ontime8	4362.4008993506
ontime9	4135.5326187909
l1events	905422

### 2.1.4 Events

	ccd 4	ccd 5	ccd 6	ccd 7	ccd 8	ccd 9
level 1 events	130769	162312	146886	171924	155447	138084
rejected events	29876	36310	29621	34479	32912	28967
rejected %	22%	22%	20%	20%	21%	20%

	ccd 4	ccd 5	ccd 6	ccd 7	ccd 8	ccd 9
grade 0 events	58745	14193	63870	22951	66631	60284
	44%	8%	43%	13%	42%	43%
grade 1 events	455	76	350	65	350	364
	0%	0%	0%	0%	0%	0%
grade 2 events	15902	58880	20183	42218	21402	18622
	12%	36%	13%	24%	13%	13%
grade 3 events	6783	3786	7463	9408	8040	6955
	5%	2%	5%	5%	5%	5%
grade 4 events	6730	3759	7122	9444	7935	6862
	5%	2%	4%	5%	5%	4%
grade 5 events	1751	3630	1913	4030	2300	1993
	1%	2%	1%	2%	1%	1%
grade 6 events	12733	45384	18627	53424	18527	16394
	9%	27%	12%	31%	11%	11%
grade 7 events	27670	32604	27358	30384	30262	26610
	21%	20%	18%	17%	19%	19%

## 2.2 Compared Parameters

Parameter	Planned	Actual	Parameter	Planned	Actual
Instrument	ACIS	ACIS	Obspar format version number	6	6
Detector	ACIS-456789	ACIS-456789	Obspar file type	PREDICTED	ACTUAL
Grating	NONE	NONE	Obspar update status	NONE	UPDATED
Data mode	FAINT	FAINT	On-chip summing requested	N	N
Observation mode	SECONDARY	SECONDARY	Subarray requested	NONE	NONE
Pointing RA	0	133.0024164708072	Alternating exposures requested	N	N
Pointing Dec	0	6.527543945688702	Primary exposure time	3.2	3.2
Pointing Roll	0.0	56.52051991735887			
SIM focus pos (mm)	-0.684267	-0.7809083437167272			
SIM defocus (mm)	0	0.7524282956875696			
SIM translation stage pos (mm)	-190.132523	250.466033080201			
SIM translation stage offset (mm)	0	-0.01005468664627074			
Observation start time	221142888.846824	221142887.82183			
Observation start date	2005-01-03T12:34:49	2005-01-03T12:34:47			
Observation end time	221160235.947606	221160234.92262			
Observation end date	2005-01-03T17:23:56	2005-01-03T17:23:54			
Read mode	TIMED	TIMED			

## 2.3 Aspect



## 2.4 Star Slots

## 2.5 FID Slots



## A Summary

### A.1 Status

V&V Scientist	Jen Lauer
V&V Date (YYYY-MM-DD)	2006.03.16
V&V Edition	1
V&V Disposition and Status	OK
V&V Charge Time	4.95999998

### A.2 Comments