

# V&V Reference Report

## L2 ASCDS Version : 7.6.7.1

Observation 59877 - L2 Version 002  
Chandra X-Ray Center

L2 Processing Date : Mar 16 2006

## Contents

<b>1</b>	<b>Front</b>	<b>2</b>
<b>2</b>	<b>OBI</b>	<b>3</b>
2.1	OBI . . . . .	3
2.1.1	Images . . . . .	3
2.1.2	Bias . . . . .	3
2.1.3	Parameters . . . . .	4
2.1.4	Events . . . . .	4
2.2	Compared Parameters . . . . .	5
2.3	Aspect . . . . .	6
2.4	Star Slots . . . . .	8
2.5	FID Slots . . . . .	8
<b>A</b>	<b>Summary</b>	<b>9</b>
A.1	Status . . . . .	9
A.2	Comments . . . . .	9

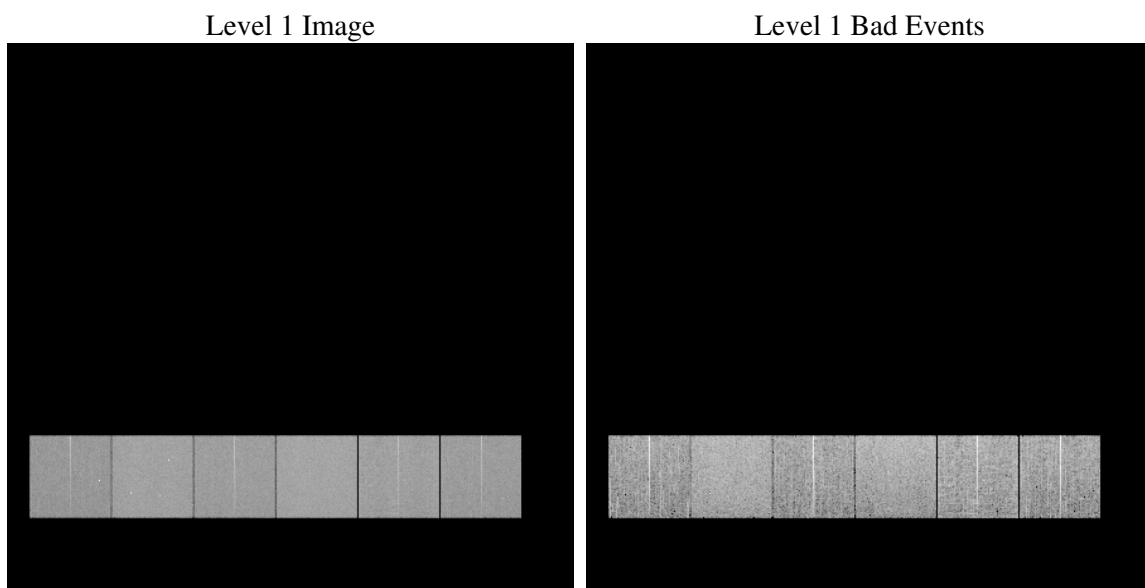
# 1 Front

seq_num	&#160
obs_id	59877
title	ACIS-456789 diagnostics
observer	CHANDRA engineering request/realtime commanding
object	&#160
dtcycle	0
cycle	P
ra_targ	0.0
dec_targ	0.0
ra_nom	91.015642408648
dec_nom	23.975244344723
roll_nom	267.12845994719
revision	2
ontime	8182.3999695182
livetime	8078.7894942544
ontime4	6270.2236720622
ontime5	8182.3999695182
ontime6	6947.5878300369
ontime7	8182.3999695182
ontime8	7054.5403389037
ontime9	6775.8162845671
l2events	1095780

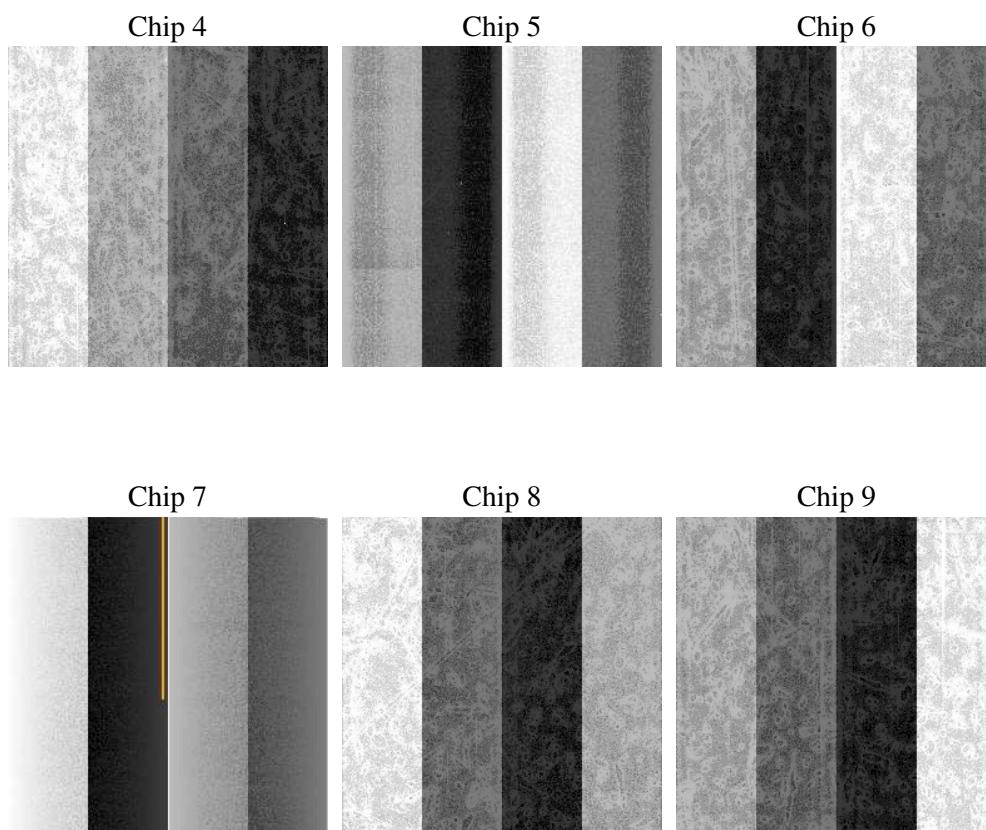
## 2 OBI

### 2.1 OBI

#### 2.1.1 Images



#### 2.1.2 Bias



### 2.1.3 Parameters

obi_num	0
ascdsver	7.6.7.1
caldsver	3.2.1
date	2006-03-16T19:15:17
revision	2

sched_exp_time	0.0
ontime	8287.2540533841
ontime4	6345.908883661
ontime5	8287.2540533841
ontime6	7026.5140815973
ontime7	8287.2540533841
ontime8	7136.7075806856
ontime9	6857.9834766686
l1events	1494566

### 2.1.4 Events

	ccd 4	ccd 5	ccd 6	ccd 7	ccd 8	ccd 9
level 1 events	209437	268721	240488	287393	258038	230489
rejected events	48975	63046	50381	59291	57725	51379
rejected %	23%	23%	20%	20%	22%	22%

	ccd 4	ccd 5	ccd 6	ccd 7	ccd 8	ccd 9
grade 0 events	94380	22601	104457	39432	110046	99746
	45%	8%	43%	13%	42%	43%
grade 1 events	738	103	526	107	601	562
	0%	0%	0%	0%	0%	0%
grade 2 events	25731	97690	32906	69972	35415	31161
	12%	36%	13%	24%	13%	13%
grade 3 events	10857	6685	12242	16603	13475	11598
	5%	2%	5%	5%	5%	5%
grade 4 events	10704	6245	12213	16443	13032	11520
	5%	2%	5%	5%	5%	4%
grade 5 events	2699	6119	3216	6852	3812	3426
	1%	2%	1%	2%	1%	1%
grade 6 events	20709	75087	30470	88542	30636	27280
	9%	27%	12%	30%	11%	11%
grade 7 events	43619	54191	44458	49442	51021	45196
	20%	20%	18%	17%	19%	19%

## 2.2 Compared Parameters

Parameter	Planned	Actual	Parameter	Planned	Actual
Instrument	ACIS	ACIS	Obspar format version number	6	6
Detector	ACIS-456789	ACIS-456789	Obspar file type	PREDICTED	ACTUAL
Grating	NONE	NONE	Obspar update status	NONE	UPDATED
Data mode	FAINT	FAINT	On-chip summing requested	N	N
Observation mode	SECONDARY	SECONDARY	Subarray requested	NONE	NONE
Pointing RA	0	91.01564240864842	Alternating exposures requested	N	N
Pointing Dec	0	23.97524434472267	Primary exposure time	3.2	3.2
Pointing Roll	0.0	267.1284599471876			
SIM focus pos (mm)	-0.684267	-0.7809083437167272			
SIM defocus (mm)	0	0.7524282956875696			
SIM translation stage pos (mm)	-190.132523	250.466033080201			
SIM translation stage offset (mm)	0	-0.01005468664627074			
Observation start time	221181873.69858	221181872.67359			
Observation start date	2005-01-03T23:24:34	2005-01-03T23:24:32			
Observation end time	221204388.849595	221204387.8246			
Observation end date	2005-01-04T05:39:49	2005-01-04T05:39:47			
Read mode	TIMED	TIMED			

## 2.3 Aspect



## 2.4 Star Slots

## 2.5 FID Slots



## A Summary

### A.1 Status

V&V Scientist	Jen Lauer
V&V Date (YYYY-MM-DD)	2006.03.16
V&V Edition	1
V&V Disposition and Status	OK
V&V Charge Time	8.18239996

### A.2 Comments