

V&V Reference Report

L2 ASCDS Version : 7.6.7

Observation 59867 - L2 Version 002
Chandra X-Ray Center

L2 Processing Date: Feb 15 2006

Contents

1	Front	2
2	OBI	3
2.1	OBI	3
2.1.1	Images	3
2.1.2	Bias	3
2.1.3	Parameters	4
2.1.4	Events	4
2.2	Compared Parameters	5
2.3	Aspect	6
2.4	Star Slots	8
2.5	FID Slots	8
A	Summary	9
A.1	Status	9
A.2	Comments	9

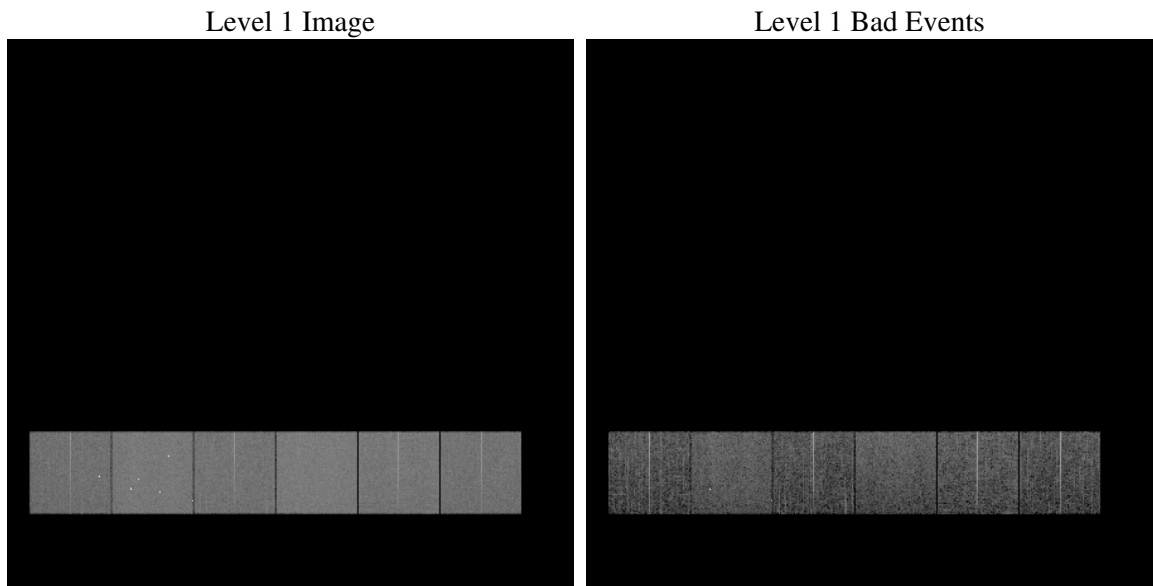
1 Front

seq_num	
obs_id	59867
title	ACIS-456789 diagnostics
observer	CHANDRA engineering request/realtime commanding
object	
dtcycle	0
cycle	P
ra_targ	0.0
dec_targ	0.0
ra_nom	107.97334836435
dec_nom	35.981186580718
roll_nom	188.20526485273
revision	2
ontime	6638.5330587327
livetime	6554.4719558984
ontime4	5199.6598825157
ontime5	6638.574098736
ontime6	5533.4399625063
ontime7	6638.5330587327
ontime8	5757.150290668
ontime9	5478.220675379
l2events	883525

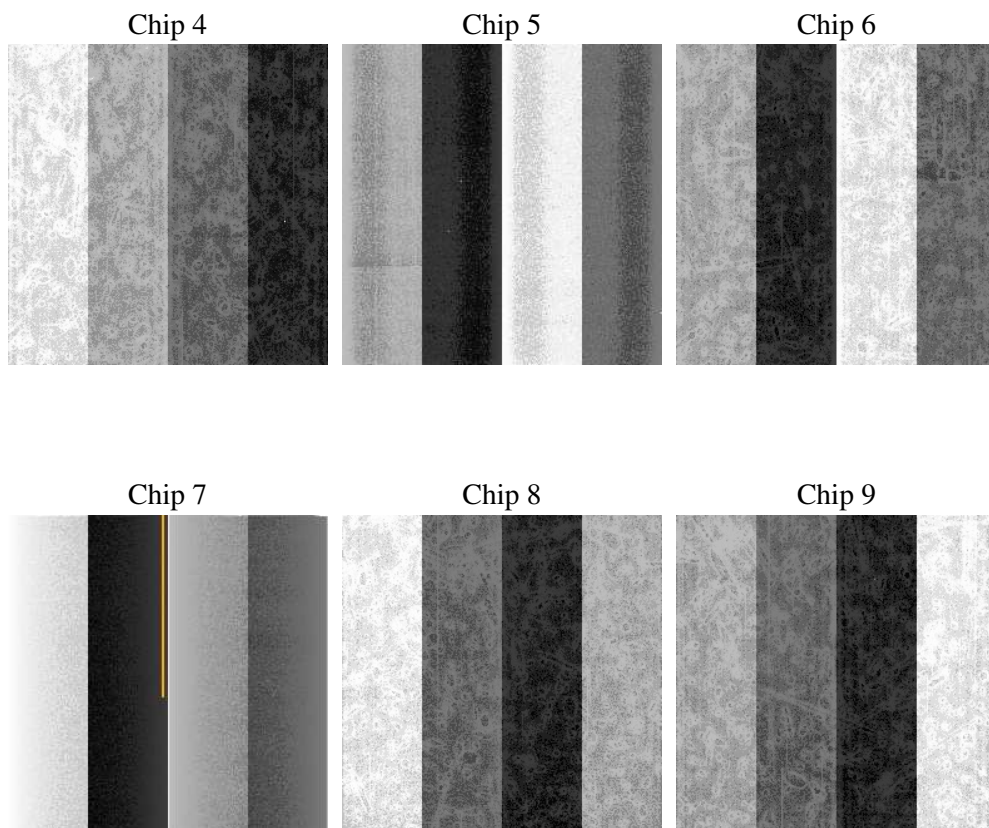
2 OBI

2.1 OBI

2.1.1 Images



2.1.2 Bias



2.1.3 Parameters

obi_num	0
ascdsver	7.6.7
caldsver	3.2.1
date	2006-02-16T02:01:47
revision	2

sched_exp_time	0.0
ontime	6640.8289490938
ontime4	5201.8326528668
ontime5	6640.8289490938
ontime6	5535.6537728608
ontime7	6640.8289490938
ontime8	5759.2820210457
ontime9	5480.5576057434
l1events	1203285

2.1.4 Events

	ccd 4	ccd 5	ccd 6	ccd 7	ccd 8	ccd 9
level 1 events	172763	220958	189908	230154	207250	182252
rejected events	39979	50363	39324	46047	45644	38581
rejected %	23%	22%	20%	20%	22%	21%

	ccd 4	ccd 5	ccd 6	ccd 7	ccd 8	ccd 9
grade 0 events	77894	20426	81753	31005	87462	79126
	45%	9%	43%	13%	42%	43%
grade 1 events	552	173	420	89	510	464
	0%	0%	0%	0%	0%	0%
grade 2 events	20419	79111	26045	56799	28355	24573
	11%	35%	13%	24%	13%	13%
grade 3 events	8898	4859	9298	12844	10574	9298
	5%	2%	4%	5%	5%	5%
grade 4 events	8788	4794	9424	12673	10432	9177
	5%	2%	4%	5%	5%	5%
grade 5 events	2239	4975	2492	5310	3087	2693
	1%	2%	1%	2%	1%	1%
grade 6 events	16875	61484	24149	70869	24853	21556
	9%	27%	12%	30%	11%	11%
grade 7 events	37098	45136	36327	40565	41977	35365
	21%	20%	19%	17%	20%	19%

2.2 Compared Parameters

Parameter	Planned	Actual	Parameter	Planned	Actual
Instrument	ACIS	ACIS	Obspar format version number	6	6
Detector	ACIS-456789	ACIS-456789	Obspar file type	PREDICTED	ACTUAL
Grating	NONE	NONE	Obspar update status	NONE	UPDATED
Data mode	FAINT	FAINT	On-chip summing requested	N	N
Observation mode	SECONDARY	SECONDARY	Subarray requested	NONE	NONE
Pointing RA	0	107.9733483643538	Alternating exposures requested	N	N
Pointing Dec	0	35.98118658071752	Primary exposure time	3.2	3.2
Pointing Roll	0.0	188.2052648527264			
SIM focus pos (mm)	-0.684267	-0.6828225247311905			
SIM defocus (mm)	0	0.8505141146731063			
SIM translation stage pos (mm)	-190.132523	250.466033080201			
SIM translation stage offset (mm)	0	-0.01005468664627074			
Observation start time	221599796.967434	221599795.94243			
Observation start date	2005-01-08T19:29:57	2005-01-08T19:29:55			
Observation end time	221617066.168213	221617065.1432			
Observation end date	2005-01-09T00:17:46	2005-01-09T00:17:45			
Read mode	TIMED	TIMED			

2.3 Aspect

2.4 Star Slots

2.5 FID Slots

A Summary

A.1 Status

V&V Scientist	Beth Sundheim
V&V Date (YYYY-MM-DD)	2006.02.16
V&V Edition	1
V&V Disposition and Status	OK
V&V Charge Time	6.63853305

A.2 Comments

Focal plane temperature is elevated.