

V&V Reference Report

L2 ASCDS Version : 7.6.7

Observation 59816 - L2 Version 002
Chandra X-Ray Center

L2 Processing Date: Feb 21 2006

Contents

1	Front	2
2	OBI	3
2.1	OBI	3
2.1.1	Images	3
2.1.2	Bias	3
2.1.3	Parameters	4
2.1.4	Events	4
2.2	Compared Parameters	5
2.3	Aspect	6
2.4	Star Slots	8
2.5	FID Slots	8
A	Summary	9
A.1	Status	9
A.2	Comments	9

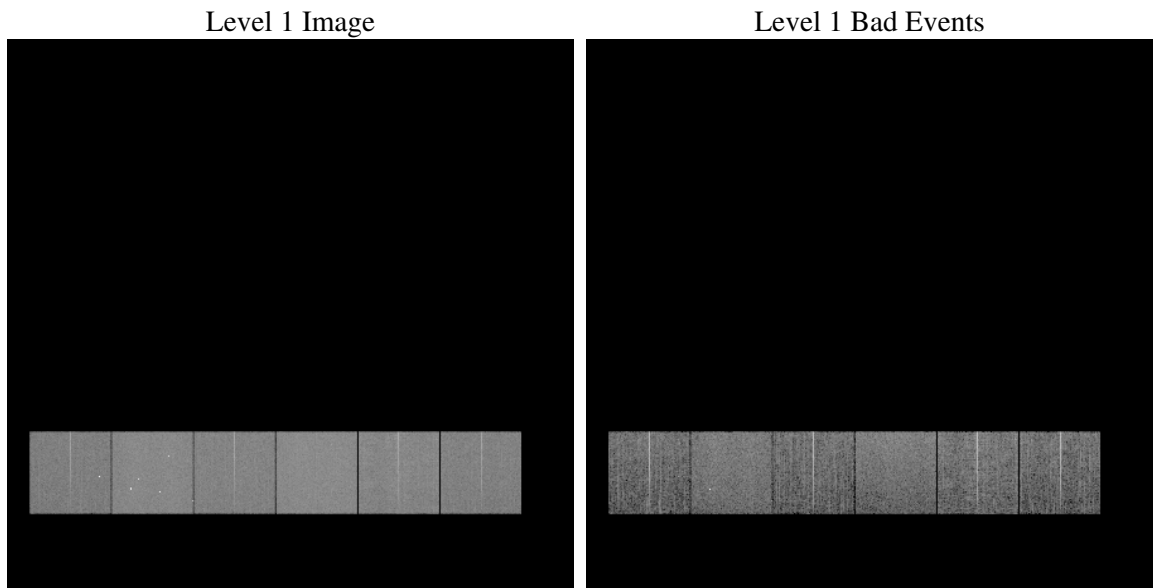
1 Front

seq_num	
obs_id	59816
title	ACIS-456789 diagnostics
observer	CHANDRA engineering request/realtime commanding
object	
dtcycle	0
cycle	P
ra_targ	0.0
dec_targ	0.0
ra_nom	123.98507046433
dec_nom	36.474644077338
roll_nom	215.1227625172
revision	2
ontime	7782.3942418098
livetime	7683.8488799248
ontime4	6012.9392641783
ontime5	7782.3999710083
ontime6	6576.8298533857
ontime7	7782.3942418098
ontime8	6748.5261960328
ontime9	6314.1868313551
l2events	1021617

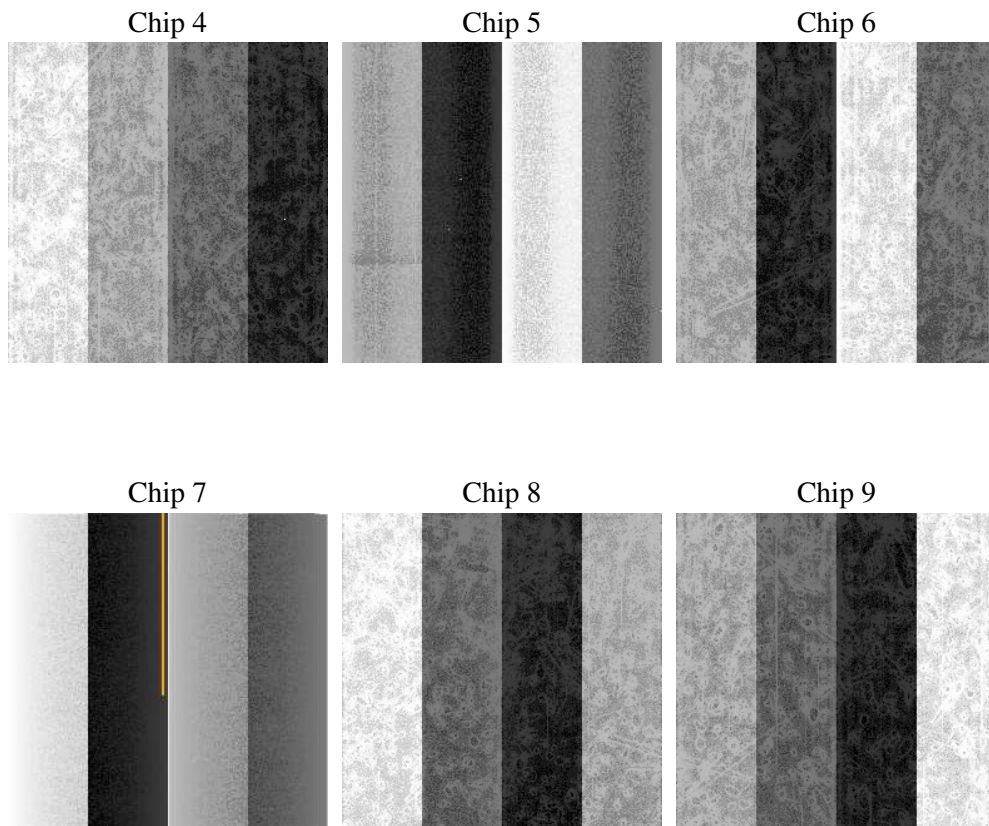
2 OBI

2.1 OBI

2.1.1 Images



2.1.2 Bias



2.1.3 Parameters

obi_num	0
ascdsver	7.6.7
caldbver	3.2.1
date	2006-02-22T02:18:05
revision	2

sched_exp_time	0.0
ontime	7784.9100718796
ontime4	6015.3319742382
ontime5	7784.9100718796
ontime6	6579.2636034489
ontime7	7784.9100718796
ontime8	6751.0362969041
ontime9	6316.7437014282
l1events	1405230

2.1.4 Events

	ccd 4	ccd 5	ccd 6	ccd 7	ccd 8	ccd 9
level 1 events	198298	256753	225284	269253	244259	211383
rejected events	47055	59568	48483	57109	56201	47757
rejected %	23%	23%	21%	21%	23%	22%

	ccd 4	ccd 5	ccd 6	ccd 7	ccd 8	ccd 9
grade 0 events	88733	22667	96093	34586	101912	90078
	44%	8%	42%	12%	41%	42%
grade 1 events	635	114	470	88	529	508
	0%	0%	0%	0%	0%	0%
grade 2 events	23136	91313	30968	65823	32934	27903
	11%	35%	13%	24%	13%	13%
grade 3 events	10137	5836	10876	14564	12343	10481
	5%	2%	4%	5%	5%	4%
grade 4 events	10094	5655	11120	14149	12391	10513
	5%	2%	4%	5%	5%	4%
grade 5 events	2733	5828	3133	6549	3850	3131
	1%	2%	1%	2%	1%	1%
grade 6 events	19225	71798	27824	83104	28567	24753
	9%	27%	12%	30%	11%	11%
grade 7 events	43605	53542	44800	50390	51733	44016
	21%	20%	19%	18%	21%	20%

2.2 Compared Parameters

Parameter	Planned	Actual	Parameter	Planned	Actual
Instrument	ACIS	ACIS	Obspar format version number	6	6
Detector	ACIS-456789	ACIS-456789	Obspar file type	PREDICTED	ACTUAL
Grating	NONE	NONE	Obspar update status	NONE	UPDATED
Data mode	FAINT	FAINT	On-chip summing requested	N	N
Observation mode	SECONDARY	SECONDARY	Subarray requested	NONE	NONE
Pointing RA	0	123.9850704643271	Alternating exposures requested	N	N
Pointing Dec	0	36.47464407733798	Primary exposure time	3.2	3.2
Pointing Roll	0.0	215.1227625172045			
SIM focus pos (mm)	-0.684267	-0.7809083437167272			
SIM defocus (mm)	0	0.7524282956875696			
SIM translation stage pos (mm)	-190.132523	250.4635187648994			
SIM translation stage offset (mm)	0	-0.007540371344731511			
Observation start time	223885506.070628	223885505.04562			
Observation start date	2005-02-04T06:25:06	2005-02-04T06:25:05			
Observation end time	223896824.12114	223896823.09613			
Observation end date	2005-02-04T09:33:44	2005-02-04T09:33:43			
Read mode	TIMED	TIMED			

2.3 Aspect

2.4 Star Slots

2.5 FID Slots

A Summary

A.1 Status

V&V Scientist	Beth Sundheim
V&V Date (YYYY-MM-DD)	2006.02.22
V&V Edition	1
V&V Disposition and Status	OK
V&V Charge Time	7.78239424

A.2 Comments

Focal plane temperature is elevated, but settles gradually during the observation.