

# V&V Reference Report

## L2 ASCDS Version : 7.6.7

Observation 59772 - L2 Version 002  
Chandra X-Ray Center

L2 Processing Date: Feb 25 2006

## Contents

<b>1</b>	<b>Front</b>	<b>2</b>
<b>2</b>	<b>OBI</b>	<b>3</b>
2.1	OBI . . . . .	3
2.1.1	Images . . . . .	3
2.1.2	Bias . . . . .	3
2.1.3	Parameters . . . . .	4
2.1.4	Events . . . . .	4
2.2	Compared Parameters . . . . .	5
2.3	Aspect . . . . .	6
2.4	Star Slots . . . . .	8
2.5	FID Slots . . . . .	8
<b>A</b>	<b>Summary</b>	<b>9</b>
A.1	Status . . . . .	9
A.2	Comments . . . . .	9

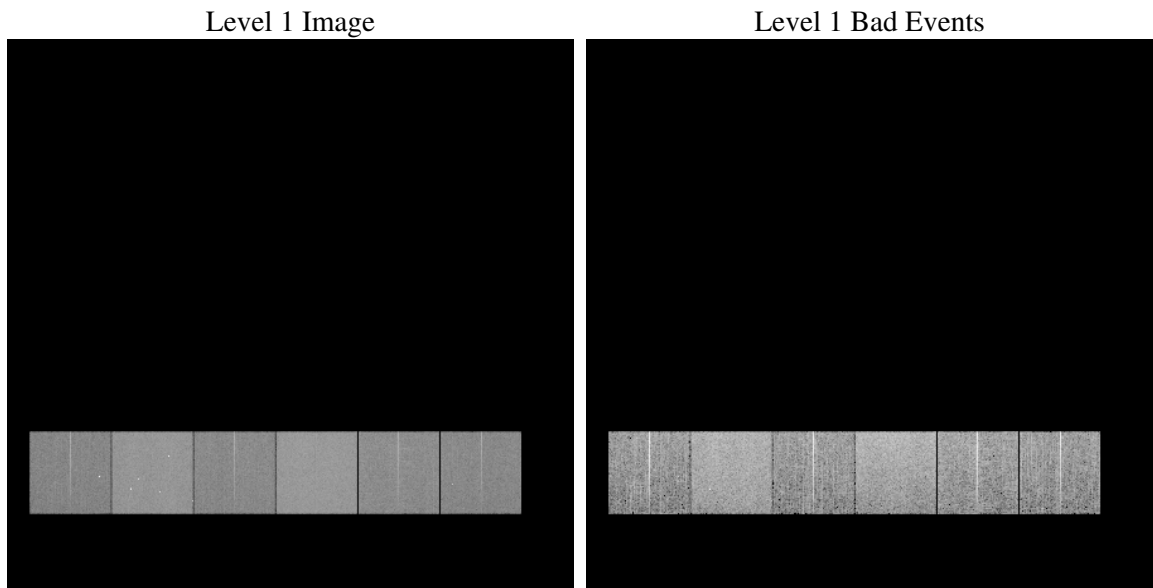
# 1 Front

seq_num	&#160
obs_id	59772
title	ACIS-456789 diagnostics
observer	CHANDRA engineering request/realtime commanding
object	&#160
dtcycle	0
cycle	P
ra_targ	0.0
dec_targ	0.0
ra_nom	138.50579101495
dec_nom	14.605187261603
roll_nom	253.92738888122
revision	2
ontime	7800.5053398609
livetime	7701.7306443472
ontime4	4861.0616330802
ontime5	7800.5463798642
ontime6	5194.8425451815
ontime7	7800.5053398609
ontime8	5386.1425010264
ontime9	5107.2127792239
l2events	1046629

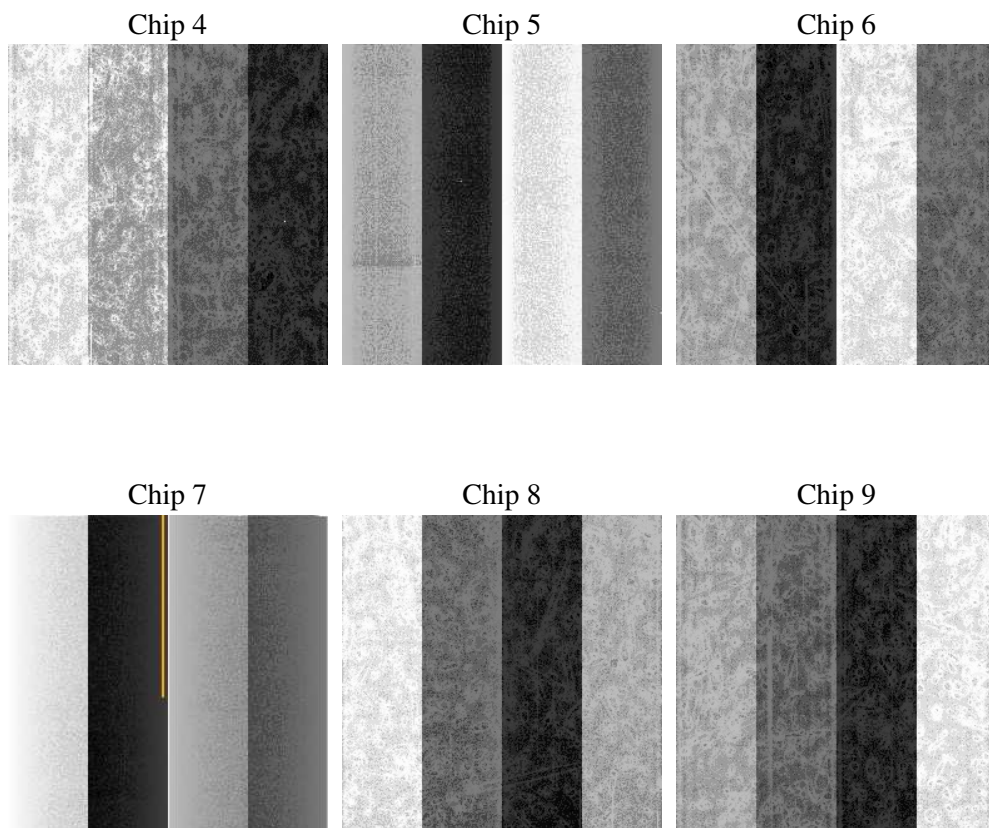
## 2 OBI

### 2.1 OBI

#### 2.1.1 Images



#### 2.1.2 Bias



### 2.1.3 Parameters

obi_num	0
ascdsver	7.6.7
caldsver	3.2.1
date	2006-02-25T18:13:18
revision	2

sched_exp_time	0.0
ontime	7801.0997131765
ontime4	4861.5328863859
ontime5	7801.0997131765
ontime6	5195.3548384905
ontime7	7801.0997131765
ontime8	5386.5727143586
ontime9	5107.8481925428
l1events	1414337

### 2.1.4 Events

	ccd 4	ccd 5	ccd 6	ccd 7	ccd 8	ccd 9
level 1 events	186625	285937	206774	309557	224909	200535
rejected events	43104	63890	44219	61819	48881	43750
rejected %	23%	22%	21%	19%	21%	21%

	ccd 4	ccd 5	ccd 6	ccd 7	ccd 8	ccd 9
grade 0 events	81250	24228	85448	42637	92116	84104
	43%	8%	41%	13%	40%	41%
grade 1 events	769	135	600	93	607	556
	0%	0%	0%	0%	0%	0%
grade 2 events	22362	104228	27926	76795	30566	26358
	11%	36%	13%	24%	13%	13%
grade 3 events	9750	6564	9905	16713	11215	9844
	5%	2%	4%	5%	4%	4%
grade 4 events	9589	6305	9955	16411	11562	10060
	5%	2%	4%	5%	5%	5%
grade 5 events	2446	6282	2634	7097	3417	2723
	1%	2%	1%	2%	1%	1%
grade 6 events	20570	80722	29321	95182	30569	26419
	11%	28%	14%	30%	13%	13%
grade 7 events	39889	57473	40985	54629	44857	40471
	21%	20%	19%	17%	19%	20%

## 2.2 Compared Parameters

Parameter	Planned	Actual	Parameter	Planned	Actual
Instrument	ACIS	ACIS	Obspar format version number	6	6
Detector	ACIS-456789	ACIS-456789	Obspar file type	PREDICTED	ACTUAL
Grating	NONE	NONE	Obspar update status	NONE	UPDATED
Data mode	FAINT	FAINT	On-chip summing requested	N	N
Observation mode	SECONDARY	SECONDARY	Subarray requested	NONE	NONE
Pointing RA	0	138.5057910149462	Alternating exposures requested	N	N
Pointing Dec	0	14.60518726160321	Primary exposure time	3.2	3.2
Pointing Roll	0.0	253.9273888812245			
SIM focus pos (mm)	-0.684267	-0.6828225247311905			
SIM defocus (mm)	0	0.8505141146731063			
SIM translation stage pos (mm)	-190.132523	250.4635187648994			
SIM translation stage offset (mm)	0	-0.007540371344731511			
Observation start time	226168765.423943	226168764.39894			
Observation start date	2005-03-02T16:39:25	2005-03-02T16:39:24			
Observation end time	226208176.675728	226208175.65073			
Observation end date	2005-03-03T03:36:17	2005-03-03T03:36:15			
Read mode	TIMED	TIMED			

## 2.3 Aspect



## 2.4 Star Slots

## 2.5 FID Slots



## A Summary

### A.1 Status

V&V Scientist	Doug Morgan
V&V Date (YYYY-MM-DD)	2006.02.26
V&V Edition	1
V&V Disposition and Status	OK
V&V Charge Time	7.80050533

### A.2 Comments