

V&V Reference Report

L2 ASCDS Version : 8.5.1.1

Observation 59725 - L2 Version 3
Chandra X-Ray Center

L2 Processing Date : Dec 21 2012

Contents

1	Front	2
2	OBI	3
2.1	OBI	3
2.1.1	Images	3
2.1.2	Bias	3
2.1.3	Parameters	4
2.1.4	Events	4
2.2	Compared Parameters	5
2.3	Star Slots	6
2.4	FID Slots	6
A	Summary	7
A.1	Status	7
A.2	Comments	7

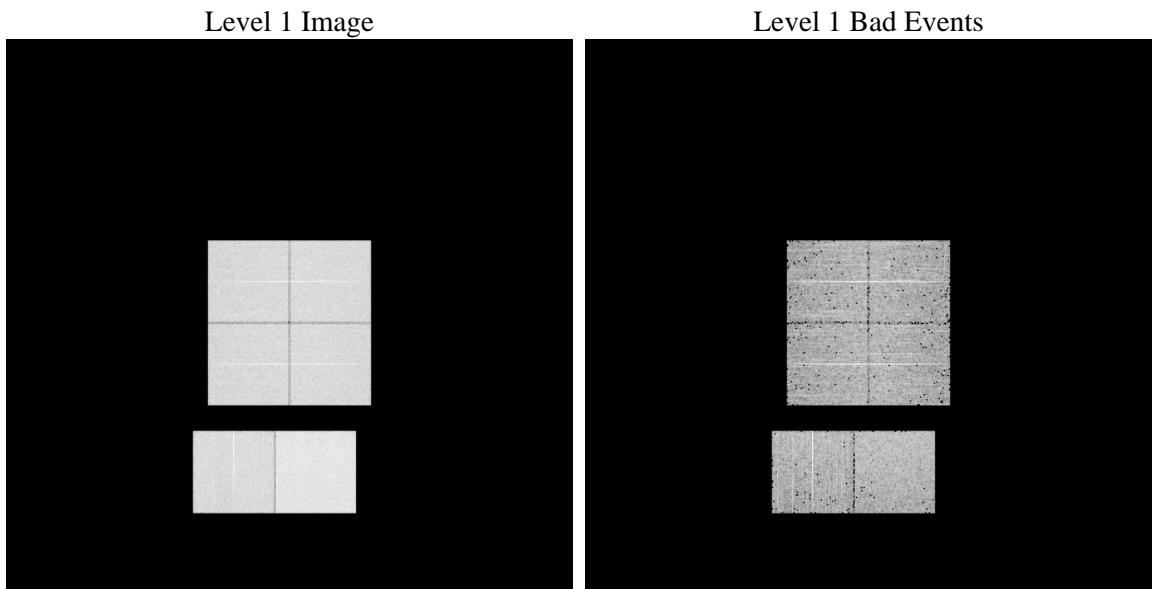
1 Front

seq_num	 	Sequence number
obs_id	59725	Observation id
title	ACIS-012367 diagnostics	Proposal title
observer	CHANDRA engineering request/realtime commanding	Principal investig
object	 	Source name
dtcycle	0	
cycle	P	events from which exps? Prim/Second/Both
ra_targ	0.0	Observer's specified target RA [deg]
dec_targ	0.0	Observer's specified target Dec [deg]
ra_nom	178.78804345339	Nominal RA [deg]
dec_nom	8.0739852445296	Nominal Dec [deg]
roll_nom	212.62383632768	Nominal Roll [deg]
revision	3	Processing version of data
ontime	4940.7999815941	Sum of GTIs [s]
livetime	4878.2365972346	Livetime [s]
ontime0	3365.6860751212	Sum of GTIs [s]
ontime1	3535.6011800468	Sum of GTIs [s]
ontime2	3337.9426034987	Sum of GTIs [s]
ontime3	3370.1877778769	Sum of GTIs [s]
ontime6	3449.9518008232	Sum of GTIs [s]
ontime7	4940.7999815941	Sum of GTIs [s]
l2events	697782	Number of level 2 events

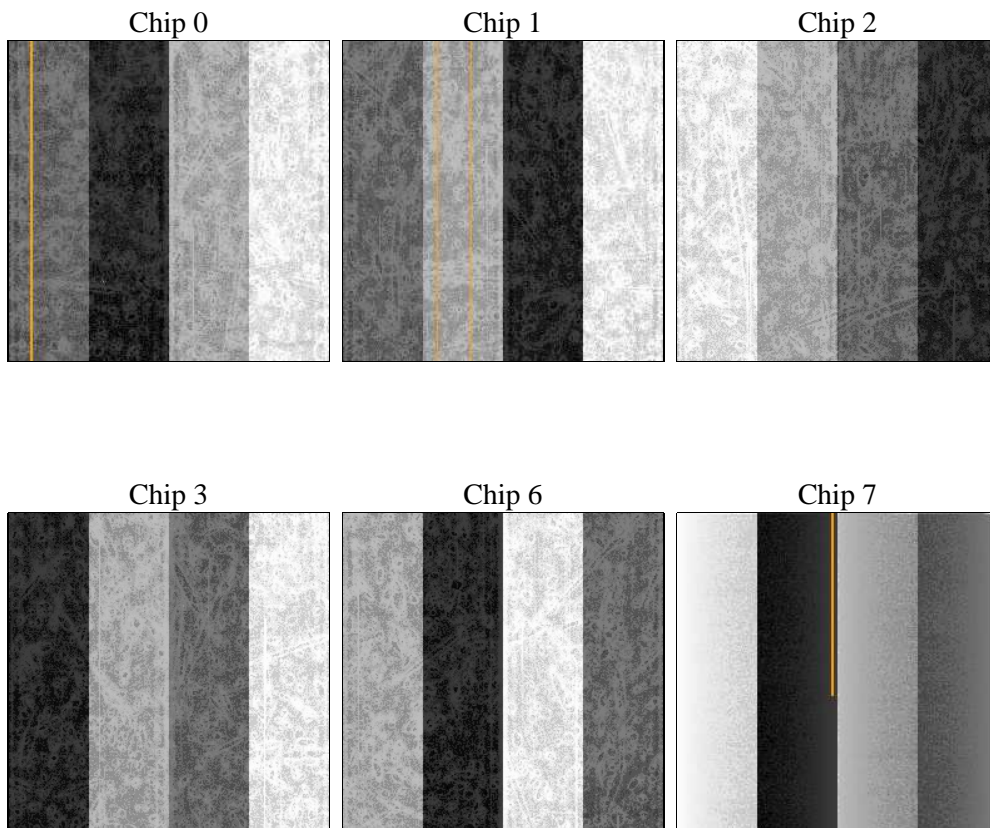
2 OBI

2.1 OBI

2.1.1 Images



2.1.2 Bias



2.1.3 Parameters

obi_num	0	Obi number	sched_exp_time	0.0	[s] Scheduled observation exposure time
ascdsver	8.5.1.1	Processing system revision	ontime	4940.7999815941	Sum of GTIs [s]
caldbver	4.5.5	 	ontime0	3365.6860751212	Sum of GTIs [s]
date	2012-12-21T07:36:43	Date and time of file creation	ontime1	3535.6011800468	Sum of GTIs [s]
revision	3	Processing version of data	ontime2	3337.9426034987	Sum of GTIs [s]
			ontime3	3370.1877778769	Sum of GTIs [s]
			ontime6	3449.9518008232	Sum of GTIs [s]
			ontime7	4940.7999815941	Sum of GTIs [s]
			l1events	907778	Number of level 1 events

2.1.4 Events

	ccd 0	ccd 1	ccd 2	ccd 3	ccd 6	ccd 7		ccd 0	ccd 1	ccd 2	ccd 3	ccd 6	ccd 7
level 1 events	135703	142048	135366	138766	147304	208591	grade 0 events	57917	60276	59341	60317	60627	44027
rejected events	27522	27708	27940	28649	31051	33228		42%	42%	43%	43%	41%	21%
rejected %	20%	19%	20%	20%	21%	15%	grade 1 events	429	379	464	438	425	137
								0%	0%	0%	0%	0%	0%
							grade 2 events	18884	20580	17747	18332	19686	38188
								13%	14%	13%	13%	13%	18%
							grade 3 events	6832	7183	6737	7196	7071	16276
								5%	5%	4%	5%	4%	7%
							grade 4 events	6853	7198	6718	7078	7040	16089
								5%	5%	4%	5%	4%	7%
							grade 5 events	1604	1692	1592	1870	1779	5548
								1%	1%	1%	1%	1%	2%
							grade 6 events	17695	19103	16883	17194	21829	60783
								13%	13%	12%	12%	14%	29%
							grade 7 events	25489	25637	25884	26341	28847	27543
								18%	18%	19%	18%	19%	13%

2.2 Compared Parameters

Parameter	Planned	Actual
Instrument	ACIS	ACIS
Detector	ACIS-012367	ACIS-012367
Grating	NONE	NONE
Data mode	FAINT	FAINT
Observation mode	SECONDARY	SECONDARY
[deg] Pointing RA	0	178.7880434533865
[deg] Pointing Dec	0	8.073985244529633
[deg] Pointing Roll	0.0	212.6238363276778
[mm] SIM focus pos	-0.782348	-0.6828225247311905
[mm] SIM defocus	0	0.8505141146731063
[mm] SIM translation stage pos	-233.592463	250.466033080201
[mm] SIM translation stage offset	0	-0.01005468664627074
[s] Observation start time (MET)	228225348.067206	228225347.0422
Observation start date	2005-03-26T11:55:48	2005-03-26T11:55:47
[s] Observation end time (MET)	228242453.267983	228242452.24297
Observation end date	2005-03-26T16:40:53	2005-03-26T16:40:52
Read mode	TIMED	TIMED

Parameter	Planned	Actual
Obspar format version number	7	7
Obspar file type	PREDICTED	ACTUAL
Obspar update status	NONE	UPDATED
On-chip summing requested	N	N
Subarray requested	NONE	NONE
Alternating exposures requested	N	N
[s] Primary exposure time	3.2	3.2

2.3 Star Slots

2.4 FID Slots

A Summary

A.1 Status

V&V Scientist	Jen Lauer
V&V Date (YYYY-MM-DD)	2013.01.04
V&V Edition	1
V&V Disposition and Status	OK
V&V Charge Time	4.9407999815941

A.2 Comments