

# V&V Reference Report

## L2 ASCDS Version : 7.6.7.1

Observation 59716 - L2 Version 002  
Chandra X-Ray Center

L2 Processing Date : Mar 18 2006

## Contents

<b>1</b>	<b>Front</b>	<b>2</b>
<b>2</b>	<b>OBI</b>	<b>3</b>
2.1	OBI . . . . .	3
2.1.1	Images . . . . .	3
2.1.2	Bias . . . . .	3
2.1.3	Parameters . . . . .	4
2.1.4	Events . . . . .	4
2.2	Compared Parameters . . . . .	5
2.3	Aspect . . . . .	6
2.4	Star Slots . . . . .	8
2.5	FID Slots . . . . .	8
<b>A</b>	<b>Summary</b>	<b>9</b>
A.1	Status . . . . .	9
A.2	Comments . . . . .	9

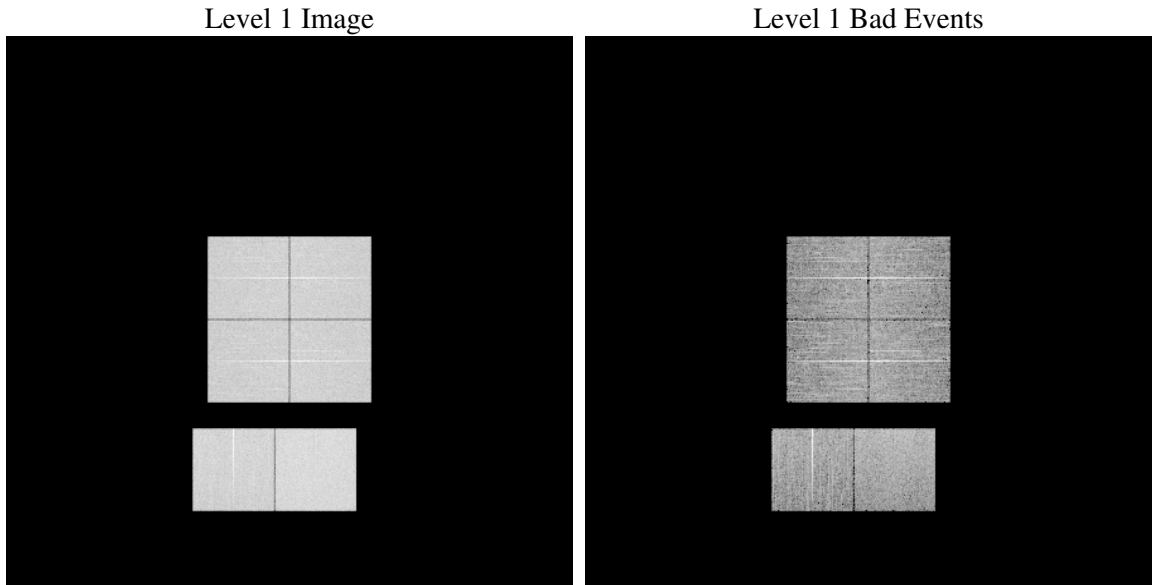
# 1 Front

seq_num	&#160
obs_id	59716
title	ACIS-012367 diagnostics
observer	CHANDRA engineering request/realtime commanding
object	&#160
dtcycle	0
cycle	P
ra_targ	0.0
dec_targ	0.0
ra_nom	182.41572831225
dec_nom	-11.509796885658
roll_nom	311.90383294487
revision	2
ontime	7798.3999709487
livetime	7699.6519348838
ontime0	6667.3025070131
ontime1	6683.5073394179
ontime2	6310.7958071232
ontime3	6469.6027230322
ontime6	6783.9772489667
ontime7	7798.3999709487
l2events	1049852

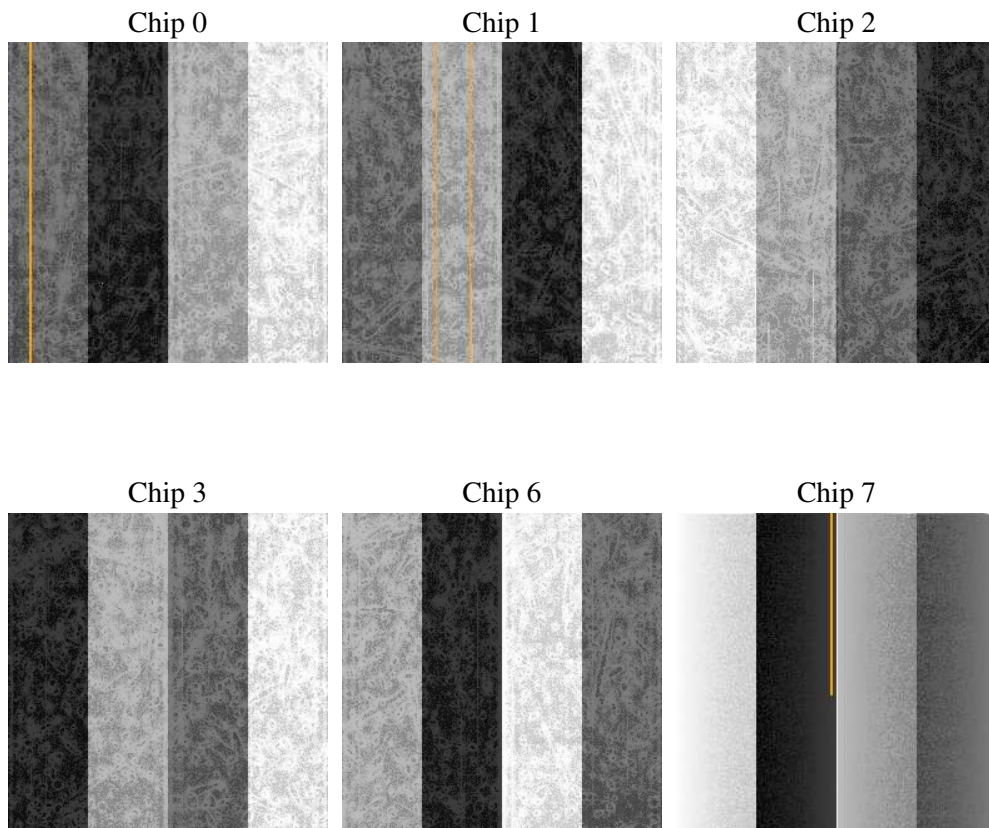
## 2 OBI

### 2.1 OBI

#### 2.1.1 Images



#### 2.1.2 Bias



### 2.1.3 Parameters

obi_num	0
ascdsver	7.6.7.1
caldsver	3.2.1
date	2006-03-18T07:20:56
revision	2

sched_exp_time	0.0
ontime	7801.0925640762
ontime0	6669.9951001406
ontime1	6686.1999325454
ontime2	6313.4884002507
ontime3	6472.2953161597
ontime6	6786.6698420942
ontime7	7801.0925640762
l1events	1410548

### 2.1.4 Events

	ccd 0	ccd 1	ccd 2	ccd 3	ccd 6	ccd 7
level 1 events	223502	225490	217557	223502	242716	277781
rejected events	47223	48388	48992	50236	53255	59085
rejected %	21%	21%	22%	22%	21%	21%

	ccd 0	ccd 1	ccd 2	ccd 3	ccd 6	ccd 7
grade 0 events	96183	95992	93667	96519	101979	35910
	43%	42%	43%	43%	42%	12%
grade 1 events	566	491	634	628	478	107
	0%	0%	0%	0%	0%	0%
grade 2 events	30714	31479	28395	29654	32455	67512
	13%	13%	13%	13%	13%	24%
grade 3 events	11393	11232	11047	11215	11804	14726
	5%	4%	5%	5%	4%	5%
grade 4 events	11410	11395	11100	11224	11817	14595
	5%	5%	5%	5%	4%	5%
grade 5 events	3099	3054	2740	3103	3255	6664
	1%	1%	1%	1%	1%	2%
grade 6 events	26666	27093	24452	24744	31493	86050
	11%	12%	11%	11%	12%	30%
grade 7 events	43471	44754	45522	46415	49435	52217
	19%	19%	20%	20%	20%	18%

## 2.2 Compared Parameters

Parameter	Planned	Actual	Parameter	Planned	Actual
Instrument	ACIS	ACIS	Obspar format version number	6	6
Detector	ACIS-012367	ACIS-012367	Obspar file type	PREDICTED	ACTUAL
Grating	NONE	NONE	Obspar update status	NONE	UPDATED
Data mode	FAINT	FAINT	On-chip summing requested	N	N
Observation mode	SECONDARY	SECONDARY	Subarray requested	NONE	NONE
Pointing RA	0	182.4157283122467	Alternating exposures requested	N	N
Pointing Dec	0	-11.50979688565801	Primary exposure time	3.2	3.2
Pointing Roll	0.0	311.9038329448731			
SIM focus pos (mm)	-0.782348	-0.7809083437167272			
SIM defocus (mm)	0	0.7524282956875696			
SIM translation stage pos (mm)	-233.592463	250.466033080201			
SIM translation stage offset (mm)	0	-0.01005468664627074			
Observation start time	228684625.988046	228684624.96304			
Observation start date	2005-03-31T19:30:26	2005-03-31T19:30:24			
Observation end time	228697415.938627	228697414.91362			
Observation end date	2005-03-31T23:03:36	2005-03-31T23:03:34			
Read mode	TIMED	TIMED			

## 2.3 Aspect



## **2.4 Star Slots**

## **2.5 FID Slots**

## A Summary

### A.1 Status

V&V Scientist	Jen Lauer
V&V Date (YYYY-MM-DD)	2006.03.20
V&V Edition	1
V&V Disposition and Status	OK
V&V Charge Time	7.79839997

### A.2 Comments