

V&V Reference Report

L2 ASCDS Version : 8.5.1.1

Observation 59711 - L2 Version 3
Chandra X-Ray Center

L2 Processing Date : Dec 21 2012

Contents

1	Front	2
2	OBI	3
2.1	OBI	3
2.1.1	Images	3
2.1.2	Bias	3
2.1.3	Parameters	4
2.1.4	Events	4
2.2	Compared Parameters	5
2.3	Star Slots	6
2.4	FID Slots	6
A	Summary	7
A.1	Status	7
A.2	Comments	7

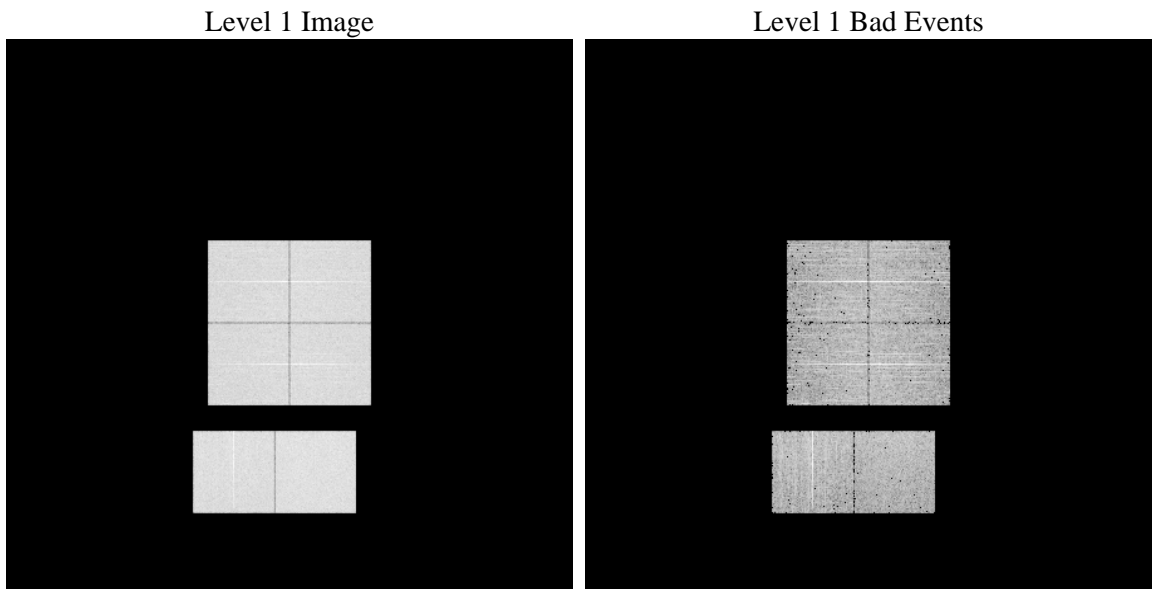
1 Front

seq_num	 	Sequence number
obs_id	59711	Observation id
title	ACIS-012367 diagnostics	Proposal title
observer	CHANDRA engineering request/realtime commanding	Principal investig
object	 	Source name
dtcycle	0	
cycle	P	events from which exps? Prim/Second/Both
ra_targ	0.0	Observer's specified target RA [deg]
dec_targ	0.0	Observer's specified target Dec [deg]
ra_nom	349.01742389839	Nominal RA [deg]
dec_nom	48.026118558076	Nominal Dec [deg]
roll_nom	33.025475023833	Nominal Roll [deg]
revision	3	Processing version of data
ontime	5478.3492581248	Sum of GTIs [s]
livetime	5408.9791011526	Livetime [s]
ontime0	4917.6220369935	Sum of GTIs [s]
ontime1	5089.3520223498	Sum of GTIs [s]
ontime2	4754.5544234216	Sum of GTIs [s]
ontime3	4900.3979862034	Sum of GTIs [s]
ontime6	5222.1491553485	Sum of GTIs [s]
ontime7	5478.3492581248	Sum of GTIs [s]
l2events	743481	Number of level 2 events

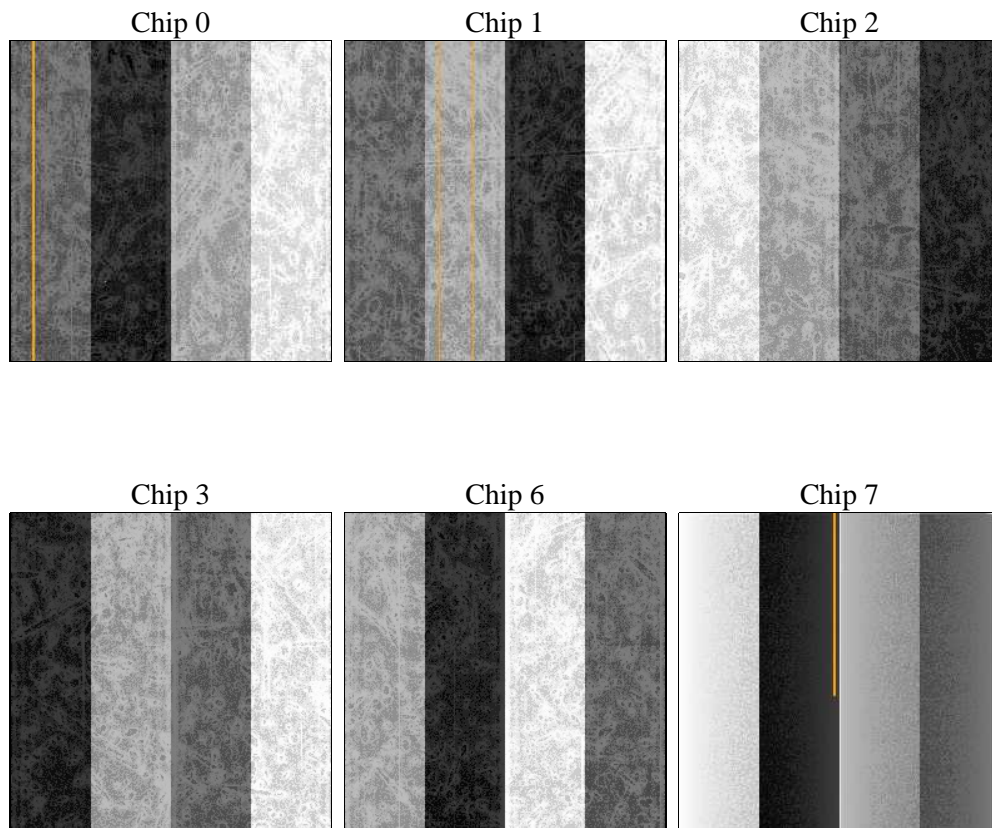
2 OBI

2.1 OBI

2.1.1 Images



2.1.2 Bias



2.1.3 Parameters

obi_num	0	Obi number	sched_exp_time	0.0	[s] Scheduled observation exposure time
ascdsver	8.5.1.1	Processing system revision	ontime	5478.3492581248	Sum of GTIs [s]
caldsver	4.5.5	 	ontime0	4917.6220369935	Sum of GTIs [s]
date	2012-12-22T01:57:22	Date and time of file creation	ontime1	5089.3520223498	Sum of GTIs [s]
revision	3	Processing version of data	ontime2	4754.5544234216	Sum of GTIs [s]
			ontime3	4900.3979862034	Sum of GTIs [s]
			ontime6	5222.1491553485	Sum of GTIs [s]
			ontime7	5478.3492581248	Sum of GTIs [s]
			l1events	996271	Number of level 1 events

2.1.4 Events

	ccd 0	ccd 1	ccd 2	ccd 3	ccd 6	ccd 7		ccd 0	ccd 1	ccd 2	ccd 3	ccd 6	ccd 7
level 1 events	157271	161909	154345	160255	175350	187141	grade 0 events	67122	68995	66815	68660	74007	36430
rejected events	35325	35699	34627	37016	38795	33339		42%	42%	43%	42%	42%	19%
rejected %	22%	22%	22%	23%	22%	17%	grade 1 events	399	335	422	429	365	106
								0%	0%	0%	0%	0%	0%
							grade 2 events	21192	22590	20209	21195	23469	33788
								13%	13%	13%	13%	13%	18%
							grade 3 events	7978	7977	7988	8006	8656	15270
								5%	4%	5%	4%	4%	8%
							grade 4 events	7863	7985	7927	8099	8556	15272
								4%	4%	5%	5%	4%	8%
							grade 5 events	2178	2371	1991	2342	2439	5977
								1%	1%	1%	1%	1%	3%
							grade 6 events	17868	18752	16779	17279	21961	53126
								11%	11%	10%	10%	12%	28%
							grade 7 events	32671	32904	32214	34245	35897	27172
								20%	20%	20%	21%	20%	14%

2.2 Compared Parameters

Parameter	Planned	Actual	Parameter	Planned	Actual
Instrument	ACIS	ACIS	Obspar format version number	7	7
Detector	ACIS-012367	ACIS-012367	Obspar file type	PREDICTED	ACTUAL
Grating	NONE	NONE	Obspar update status	NONE	UPDATED
Data mode	FAINT	FAINT	On-chip summing requested	N	N
Observation mode	SECONDARY	SECONDARY	Subarray requested	NONE	NONE
[deg] Pointing RA	0	349.0174238983881	Alternating exposures requested	N	N
[deg] Pointing Dec	0	48.02611855807589	[s] Primary exposure time	3.2	3.2
[deg] Pointing Roll	0.0	33.02547502383275			
[mm] SIM focus pos	-0.782348	-0.6828225247311905			
[mm] SIM defocus	0	0.8505141146731063			
[mm] SIM translation stage pos	-233.592463	250.466033080201			
[mm] SIM translation stage offset	0	-0.01005468664627074			
[s] Observation start time (MET)	228909890.248259	228909889.22327			
Observation start date	2005-04-03T10:04:50	2005-04-03T10:04:49			
[s] Observation end time (MET)	228927848.249073	228927847.22408			
Observation end date	2005-04-03T15:04:08	2005-04-03T15:04:07			
Read mode	TIMED	TIMED			

2.3 Star Slots

2.4 FID Slots

A Summary

A.1 Status

V&V Scientist	Jen Lauer
V&V Date (YYYY-MM-DD)	2013.01.15
V&V Edition	1
V&V Disposition and Status	OK
V&V Charge Time	5.4783492581248

A.2 Comments