

V&V Reference Report

L2 ASCDS Version : 7.6.7.1

Observation 59711 - L2 Version 002
Chandra X-Ray Center

L2 Processing Date : Mar 18 2006

Contents

1	Front	2
2	OBI	3
2.1	OBI	3
2.1.1	Images	3
2.1.2	Bias	3
2.1.3	Parameters	4
2.1.4	Events	4
2.2	Compared Parameters	5
2.3	Aspect	6
2.4	Star Slots	8
2.5	FID Slots	8
A	Summary	9
A.1	Status	9
A.2	Comments	9

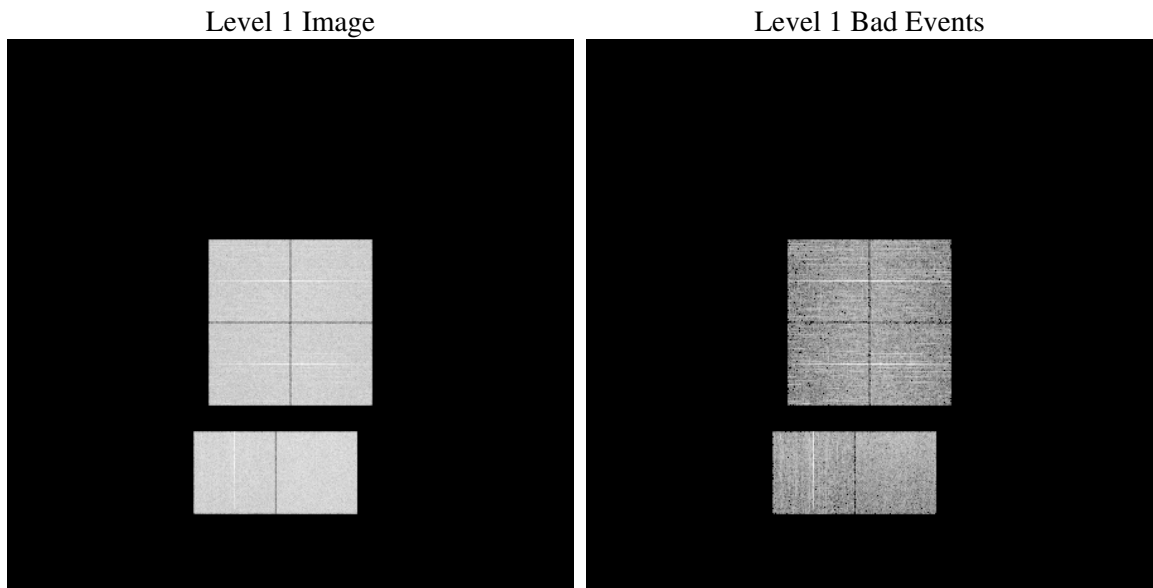
1 Front

seq_num	
obs_id	59711
title	ACIS-012367 diagnostics
observer	CHANDRA engineering request/realtime commanding
object	
dtcycle	0
cycle	P
ra_targ	0.0
dec_targ	0.0
ra_nom	349.01738906728
dec_nom	48.026103447528
roll_nom	33.025500908031
revision	2
ontime	5478.3999795914
livetime	5409.0291803534
ontime0	4917.7137984633
ontime1	5089.484823823
ontime2	4753.128264904
ontime3	4898.8076676726
ontime6	5222.3640367985
ontime7	5478.3999795914
l2events	737787

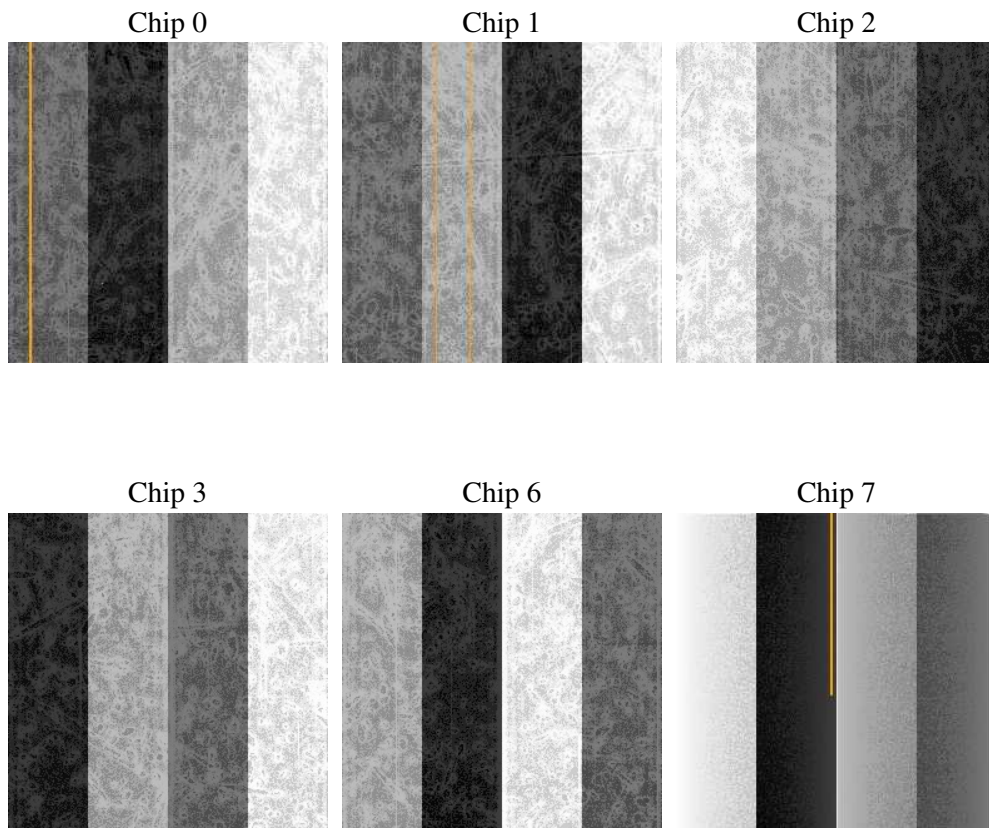
2 OBI

2.1 OBI

2.1.1 Images



2.1.2 Bias



2.1.3 Parameters

obi_num	0
ascdsver	7.6.7.1
caldbver	3.2.1
date	2006-03-18T07:36:55
revision	2

sched_exp_time	0.0
ontime	5480.5297687948
ontime0	4919.8435876667
ontime1	5091.6146130264
ontime2	4754.5544234216
ontime3	4900.3979862034
ontime6	5224.4938260019
ontime7	5480.5297687948
l1events	996271

2.1.4 Events

	ccd 0	ccd 1	ccd 2	ccd 3	ccd 6	ccd 7
level 1 events	157271	161909	154345	160255	175350	187141
rejected events	35248	35610	34627	37016	38701	39361
rejected %	22%	21%	22%	23%	22%	21%

	ccd 0	ccd 1	ccd 2	ccd 3	ccd 6	ccd 7
grade 0 events	67122	68995	66815	68662	74007	25072
	42%	42%	43%	42%	42%	13%
grade 1 events	399	335	422	429	365	65
	0%	0%	0%	0%	0%	0%
grade 2 events	21192	22590	20209	21193	23469	44250
	13%	13%	13%	13%	13%	23%
grade 3 events	7978	7977	7988	8007	8656	10686
	5%	4%	5%	4%	4%	5%
grade 4 events	7863	7985	7927	8100	8558	10477
	4%	4%	5%	5%	4%	5%
grade 5 events	2178	2371	1991	2342	2439	4711
	1%	1%	1%	1%	1%	2%
grade 6 events	17868	18752	16779	17277	21959	57295
	11%	11%	10%	10%	12%	30%
grade 7 events	32671	32904	32214	34245	35897	34585
	20%	20%	20%	21%	20%	18%

2.2 Compared Parameters

Parameter	Planned	Actual	Parameter	Planned	Actual
Instrument	ACIS	ACIS	Obspar format version number	6	6
Detector	ACIS-012367	ACIS-012367	Obspar file type	PREDICTED	ACTUAL
Grating	NONE	NONE	Obspar update status	NONE	UPDATED
Data mode	FAINT	FAINT	On-chip summing requested	N	N
Observation mode	SECONDARY	SECONDARY	Subarray requested	NONE	NONE
Pointing RA	0	349.01738906728	Alternating exposures requested	N	N
Pointing Dec	0	48.0261034475278	Primary exposure time	3.2	3.2
Pointing Roll	0.0	33.02550090803064			
SIM focus pos (mm)	-0.782348	-0.6828225247311905			
SIM defocus (mm)	0	0.8505141146731063			
SIM translation stage pos (mm)	-233.592463	250.466033080201			
SIM translation stage offset (mm)	0	-0.01005468664627074			
Observation start time	228909890.248259	228909889.22327			
Observation start date	2005-04-03T10:04:50	2005-04-03T10:04:49			
Observation end time	228927848.249073	228927847.22408			
Observation end date	2005-04-03T15:04:08	2005-04-03T15:04:07			
Read mode	TIMED	TIMED			

2.3 Aspect

2.4 Star Slots

2.5 FID Slots

A Summary

A.1 Status

V&V Scientist	Jen Lauer
V&V Date (YYYY-MM-DD)	2006.03.20
V&V Edition	1
V&V Disposition and Status	OK
V&V Charge Time	5.47839997

A.2 Comments