

V&V Reference Report

L2 ASCDS Version : 7.6.7

Observation 59707 - L2 Version 002
Chandra X-Ray Center

L2 Processing Date: Feb 28 2006

Contents

1	Front	2
2	OBI	3
2.1	OBI	3
2.1.1	Images	3
2.1.2	Bias	3
2.1.3	Parameters	4
2.1.4	Events	4
2.2	Compared Parameters	5
2.3	Aspect	6
2.4	Star Slots	8
2.5	FID Slots	8
A	Summary	9
A.1	Status	9
A.2	Comments	9

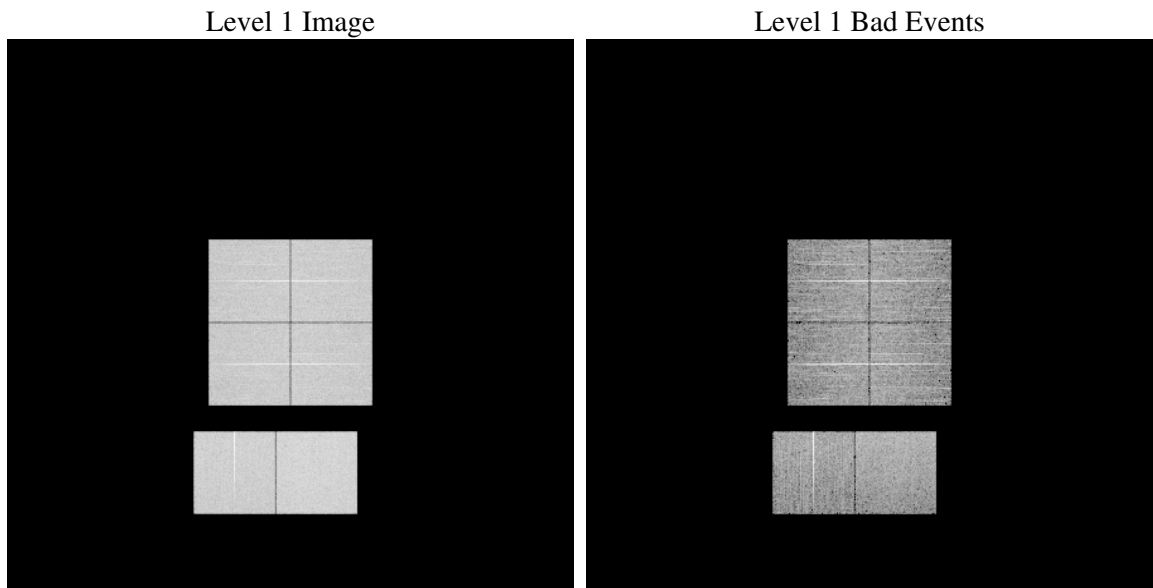
1 Front

seq_num	
obs_id	59707
title	ACIS-012367 diagnostics
observer	CHANDRA engineering request/realtime commanding
object	
dtcycle	0
cycle	P
ra_targ	0.0
dec_targ	0.0
ra_nom	189.10186619099
dec_nom	16.597284362051
roll_nom	199.72256931148
revision	2
ontime	7803.8950587213
livetime	7705.0774405463
ontime0	6886.7384146452
ontime1	7094.2020539939
ontime2	6711.8072286844
ontime3	6805.6311291456
ontime6	7253.0921884179
ontime7	7803.8950587213
l2events	1040685

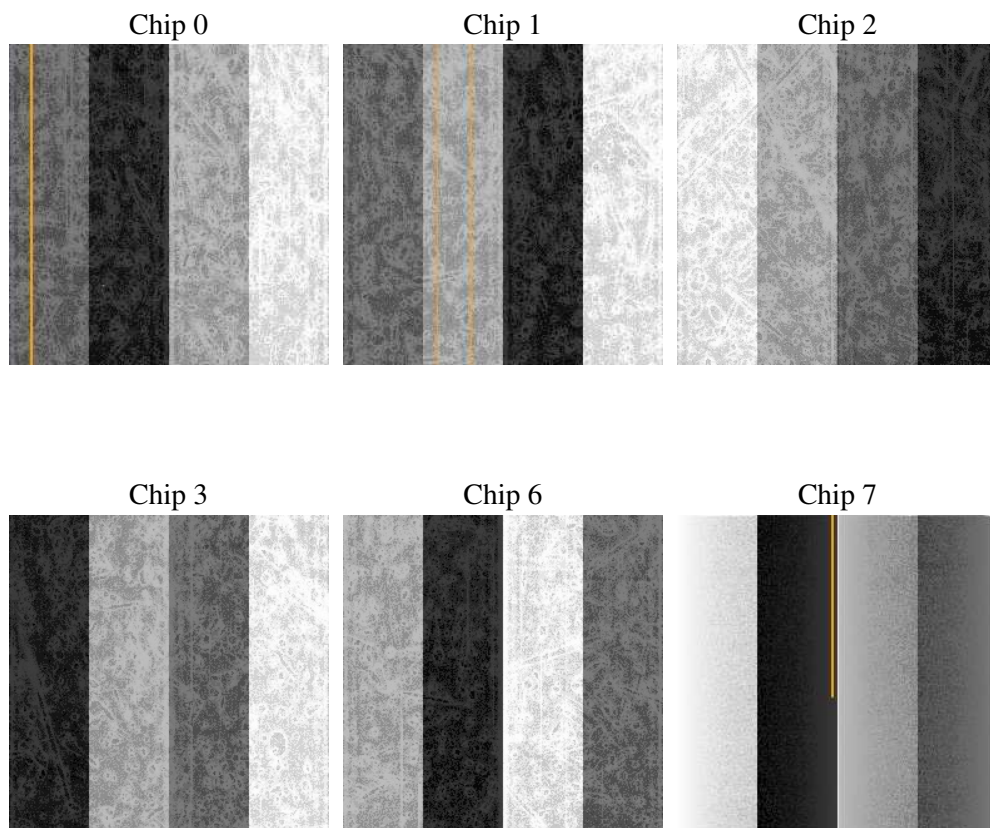
2 OBI

2.1 OBI

2.1.1 Images



2.1.2 Bias



2.1.3 Parameters

obi_num	1
ascdsver	7.6.7
caldbver	3.2.1
date	2006-03-01T01:28:15
revision	2

sched_exp_time	0.0
ontime	7804.3533045053
ontime0	6887.1556204259
ontime1	7094.5782197714
ontime2	6712.1423544586
ontime3	6806.130414933
ontime6	7253.3862742186
ontime7	7804.3533045053
l1events	1407750

2.1.4 Events

	ccd 0	ccd 1	ccd 2	ccd 3	ccd 6	ccd 7
level 1 events	222999	227924	219041	223939	244408	269439
rejected events	50035	49925	49359	51257	53575	58838
rejected %	22%	21%	22%	22%	21%	21%

	ccd 0	ccd 1	ccd 2	ccd 3	ccd 6	ccd 7
grade 0 events	94735	96774	94711	96267	103197	34301
	42%	42%	43%	42%	42%	12%
grade 1 events	546	541	611	596	503	107
	0%	0%	0%	0%	0%	0%
grade 2 events	30425	31948	28792	29770	33095	64882
	13%	14%	13%	13%	13%	24%
grade 3 events	11257	11298	10982	11097	12073	14234
	5%	4%	5%	4%	4%	5%
grade 4 events	11092	11462	11215	11536	11800	14366
	4%	5%	5%	5%	4%	5%
grade 5 events	3053	3132	2887	3247	3515	6801
	1%	1%	1%	1%	1%	2%
grade 6 events	25455	26517	23982	24012	30668	82818
	11%	11%	10%	10%	12%	30%
grade 7 events	46436	46252	45861	47414	49557	51930
	20%	20%	20%	21%	20%	19%

2.2 Compared Parameters

Parameter	Planned	Actual	Parameter	Planned	Actual
Instrument	ACIS	ACIS	Obspar format version number	6	6
Detector	ACIS-012367	ACIS-012367	Obspar file type	PREDICTED	ACTUAL
Grating	NONE	NONE	Obspar update status	NONE	UPDATED
Data mode	FAINT	FAINT	On-chip summing requested	N	N
Observation mode	SECONDARY	SECONDARY	Subarray requested	NONE	NONE
Pointing RA	0	189.1018661909875	Alternating exposures requested	N	N
Pointing Dec	0	16.59728436205067	Primary exposure time	3.2	3.2
Pointing Roll	0.0	199.7225693114766			
SIM focus pos (mm)	-0.782348	-0.7809083437167272			
SIM defocus (mm)	0	0.7524282956875696			
SIM translation stage pos (mm)	-233.592463	250.466033080201			
SIM translation stage offset (mm)	0	-0.01005468664627074			
Observation start time	229370031.219183	229370030.19418			
Observation start date	2005-04-08T17:53:51	2005-04-08T17:53:50			
Observation end time	229407398.620883	229407397.59588			
Observation end date	2005-04-09T04:16:39	2005-04-09T04:16:37			
Read mode	TIMED	TIMED			

2.3 Aspect

2.4 Star Slots

2.5 FID Slots

A Summary

A.1 Status

V&V Scientist	Beth Sundheim
V&V Date (YYYY-MM-DD)	2006.03.01
V&V Edition	1
V&V Disposition and Status	OK
V&V Charge Time	7.80389505

A.2 Comments