

V&V Reference Report

L2 ASCDS Version : 7.6.7

Observation 59703 - L2 Version 002
Chandra X-Ray Center

L2 Processing Date: Feb 28 2006

Contents

1	Front	2
2	OBI	3
2.1	OBI	3
2.1.1	Images	3
2.1.2	Bias	3
2.1.3	Parameters	4
2.1.4	Events	4
2.2	Compared Parameters	5
2.3	Aspect	6
2.4	Star Slots	8
2.5	FID Slots	8
A	Summary	9
A.1	Status	9
A.2	Comments	9

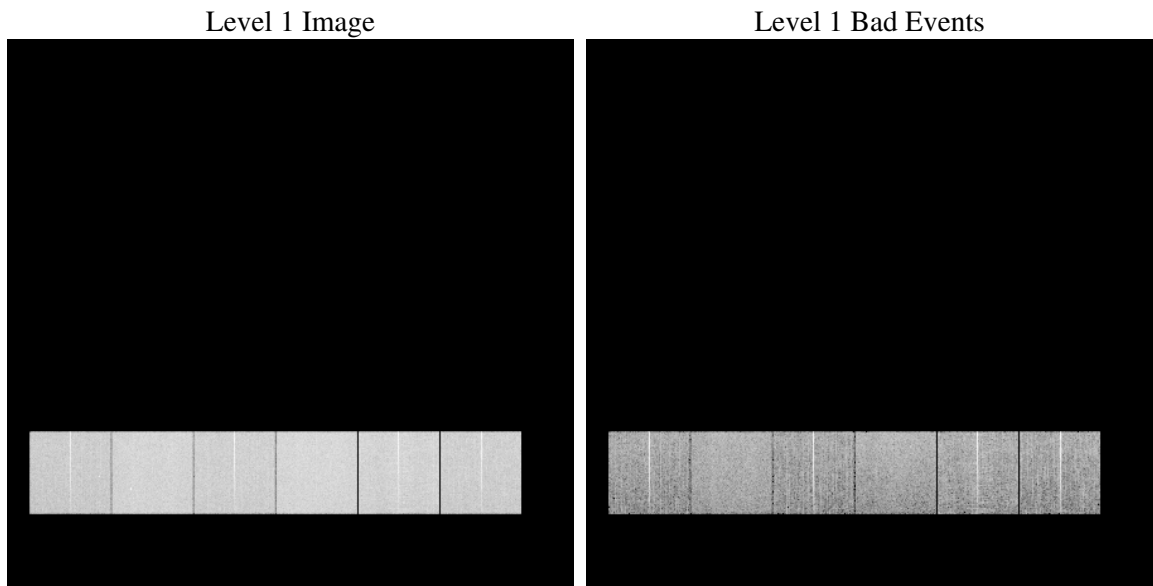
1 Front

seq_num	
obs_id	59703
title	ACIS-456789 diagnostics
observer	CHANDRA engineering request/realtime commanding
object	
dtcycle	0
cycle	P
ra_targ	0.0
dec_targ	0.0
ra_nom	190.03235592806
dec_nom	-30.995197382683
roll_nom	334.81740162697
revision	2
ontime	8275.1999691725
livetime	8170.4144044356
ontime4	6776.1946434677
ontime5	8275.1999691725
ontime6	7231.6053838134
ontime7	8275.1999691725
ontime8	7521.660402149
ontime9	7080.6821729839
l2events	1070075

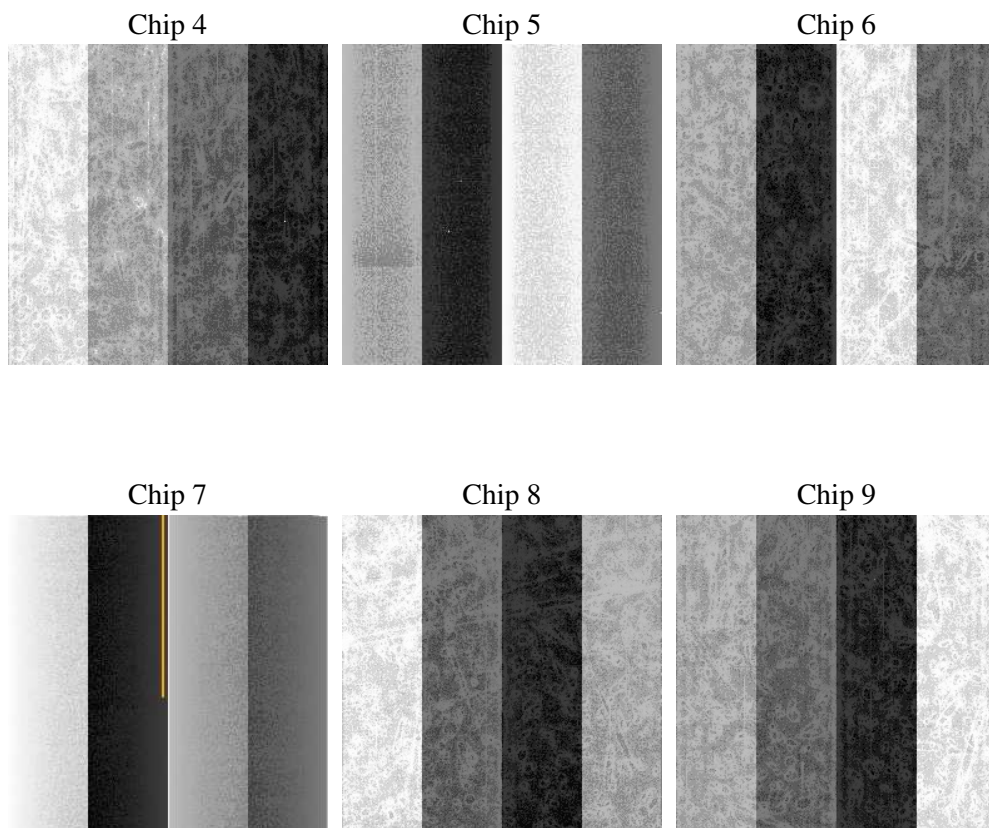
2 OBI

2.1 OBI

2.1.1 Images



2.1.2 Bias



2.1.3 Parameters

obi_num	0
ascdsver	7.6.7
caldsver	3.2.1
date	2006-03-01T02:02:07
revision	2

sched_exp_time	0.0
ontime	8277.5336758792
ontime4	6776.9609796405
ontime5	8277.5336758792
ontime6	7233.9390905201
ontime7	8277.5336758792
ontime8	7522.3856983483
ontime9	7081.6126691699
l1events	1491201

2.1.4 Events

	ccd 4	ccd 5	ccd 6	ccd 7	ccd 8	ccd 9
level 1 events	215789	263337	239918	279868	261414	230875
rejected events	55066	65642	54293	61792	62472	55894
rejected %	25%	24%	22%	22%	23%	24%

	ccd 4	ccd 5	ccd 6	ccd 7	ccd 8	ccd 9
grade 0 events	93363	18643	100823	35291	107895	96558
	43%	7%	42%	12%	41%	41%
grade 1 events	742	101	511	116	554	587
	0%	0%	0%	0%	0%	0%
grade 2 events	25073	93239	32349	66849	35156	29700
	11%	35%	13%	23%	13%	12%
grade 3 events	10848	5688	11543	15114	12877	11291
	5%	2%	4%	5%	4%	4%
grade 4 events	10790	5520	11289	14671	12757	11109
	5%	2%	4%	5%	4%	4%
grade 5 events	3185	6301	3410	7007	4247	3748
	1%	2%	1%	2%	1%	1%
grade 6 events	20649	74605	29621	86151	30257	26323
	9%	28%	12%	30%	11%	11%
grade 7 events	51139	59240	50372	54669	57671	51559
	23%	22%	20%	19%	22%	22%

2.2 Compared Parameters

Parameter	Planned	Actual	Parameter	Planned	Actual
Instrument	ACIS	ACIS	Obspar format version number	6	6
Detector	ACIS-456789	ACIS-456789	Obspar file type	PREDICTED	ACTUAL
Grating	NONE	NONE	Obspar update status	NONE	UPDATED
Data mode	FAINT	FAINT	On-chip summing requested	N	N
Observation mode	SECONDARY	SECONDARY	Subarray requested	NONE	NONE
Pointing RA	0	190.0323559280618	Alternating exposures requested	N	N
Pointing Dec	0	-30.99519738268279	Primary exposure time	3.2	3.2
Pointing Roll	0.0	334.8174016269685			
SIM focus pos (mm)	-0.684267	-0.7809083437167272			
SIM defocus (mm)	0	0.7524282956875696			
SIM translation stage pos (mm)	-190.132523	250.466033080201			
SIM translation stage offset (mm)	0	-0.01005468664627074			
Observation start time	229633927.731189	229633926.70617			
Observation start date	2005-04-11T19:12:08	2005-04-11T19:12:06			
Observation end time	229656440.832214	229656439.8072			
Observation end date	2005-04-12T01:27:21	2005-04-12T01:27:19			
Read mode	TIMED	TIMED			

2.3 Aspect

2.4 Star Slots

2.5 FID Slots

A Summary

A.1 Status

V&V Scientist	Beth Sundheim
V&V Date (YYYY-MM-DD)	2006.03.01
V&V Edition	1
V&V Disposition and Status	OK
V&V Charge Time	8.27519996

A.2 Comments