

V&V Reference Report

L2 ASCDS Version : 7.6.7

Observation 59687 - L2 Version 002
Chandra X-Ray Center

L2 Processing Date: Mar 2 2006

Contents

1	Front	2
2	OBI	3
2.1	OBI	3
2.1.1	Images	3
2.1.2	Bias	3
2.1.3	Parameters	4
2.1.4	Events	4
2.2	Compared Parameters	5
2.3	Aspect	6
2.4	Star Slots	8
2.5	FID Slots	8
A	Summary	9
A.1	Status	9
A.2	Comments	9

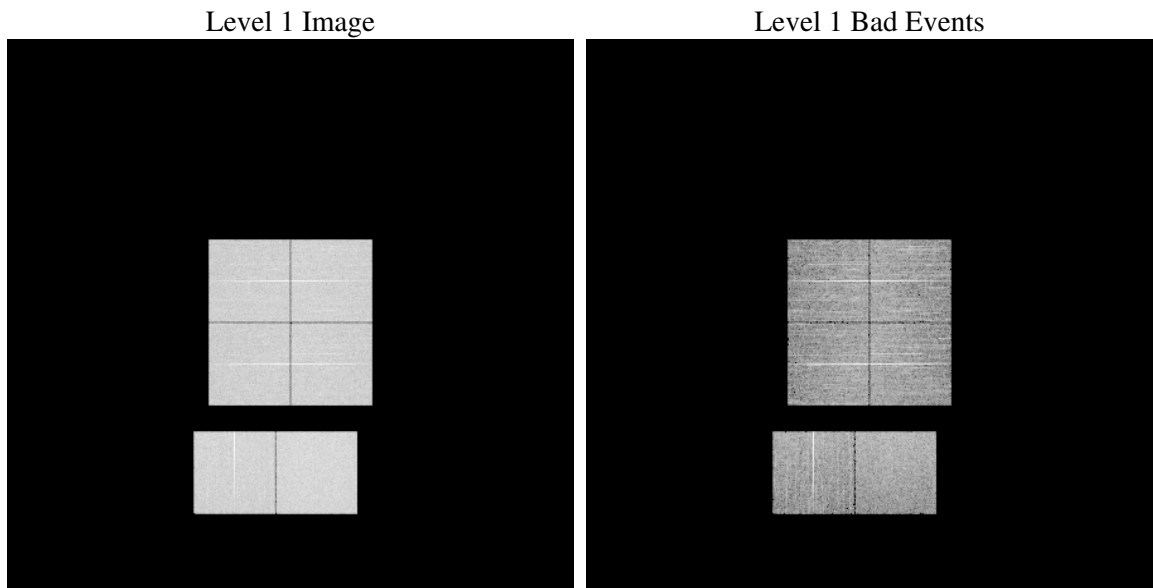
1 Front

seq_num	
obs_id	59687
title	ACIS-012367 diagnostics
observer	CHANDRA engineering request/realtime commanding
object	
dtcycle	0
cycle	P
ra_targ	0.0
dec_targ	0.0
ra_nom	185.01341003782
dec_nom	-11.025368633674
roll_nom	264.55689431238
revision	2
ontime	7231.9999730587
livetime	7140.4240348122
ontime0	6606.4915960729
ontime1	6800.9501436949
ontime2	6421.75572896
ontime3	6493.0576144755
ontime6	6972.7099103928
ontime7	7231.9999730587
l2events	949281

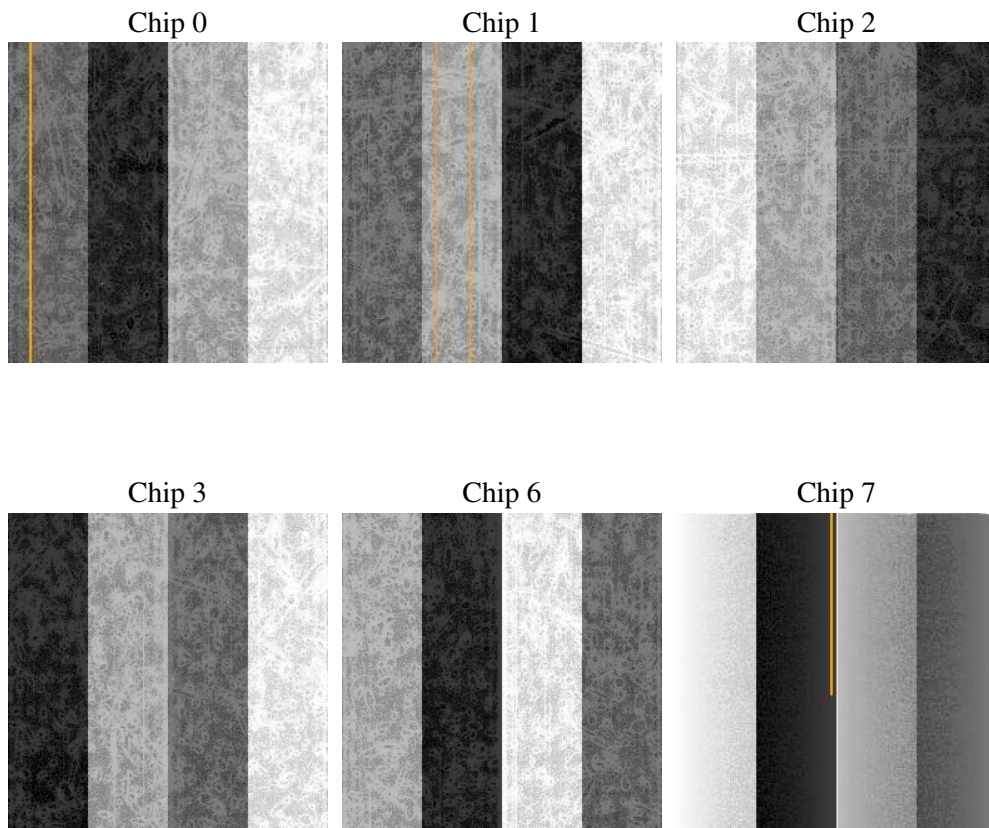
2 OBI

2.1 OBI

2.1.1 Images



2.1.2 Bias



2.1.3 Parameters

obi_num	1
ascdsver	7.6.7
caldsver	3.2.1
date	2006-03-02T14:41:20
revision	2

sched_exp_time	0.0
ontime	7318.1944727004
ontime0	6686.2041947842
ontime1	6887.1446631849
ontime2	6498.2273474336
ontime3	6569.5292130411
ontime6	7055.6754680574
ontime7	7318.1944727004
l1events	1320085

2.1.4 Events

	ccd 0	ccd 1	ccd 2	ccd 3	ccd 6	ccd 7
level 1 events	208539	217065	206785	212228	229139	246329
rejected events	49802	52971	51227	53912	55018	58893
rejected %	23%	24%	24%	25%	24%	23%

	ccd 0	ccd 1	ccd 2	ccd 3	ccd 6	ccd 7
grade 0 events	88272	90026	88817	90066	94612	29029
	42%	41%	42%	42%	41%	11%
grade 1 events	515	452	573	567	446	90
	0%	0%	0%	0%	0%	0%
grade 2 events	27905	30610	25765	26794	31730	59512
	13%	14%	12%	12%	13%	24%
grade 3 events	10378	10423	10126	10438	10611	12649
	4%	4%	4%	4%	4%	5%
grade 4 events	10453	10421	10209	10469	10582	12114
	5%	4%	4%	4%	4%	4%
grade 5 events	2942	3062	2665	3162	3181	6074
	1%	1%	1%	1%	1%	2%
grade 6 events	23757	24726	22461	22403	28680	76458
	11%	11%	10%	10%	12%	31%
grade 7 events	44317	47345	46169	48329	49297	50403
	21%	21%	22%	22%	21%	20%

2.2 Compared Parameters

Parameter	Planned	Actual	Parameter	Planned	Actual
Instrument	ACIS	ACIS	Obspar format version number	6	6
Detector	ACIS-012367	ACIS-012367	Obspar file type	PREDICTED	ACTUAL
Grating	NONE	NONE	Obspar update status	NONE	UPDATED
Data mode	FAINT	FAINT	On-chip summing requested	N	N
Observation mode	SECONDARY	SECONDARY	Subarray requested	NONE	NONE
Pointing RA	0	185.0134100378245	Alternating exposures requested	N	N
Pointing Dec	0	-11.02536863367417	Primary exposure time	3.2	3.2
Pointing Roll	0.0	264.5568943123814			
SIM focus pos (mm)	-0.782348	-0.6828225247311905			
SIM defocus (mm)	0	0.8505141146731063			
SIM translation stage pos (mm)	-233.592463	250.4635187648994			
SIM translation stage offset (mm)	0	-0.007540371344731511			
Observation start time	230553022.722923	230553021.69795			
Observation start date	2005-04-22T10:30:23	2005-04-22T10:30:21			
Observation end time	230573373.073847	230573372.04887			
Observation end date	2005-04-22T16:09:33	2005-04-22T16:09:32			
Read mode	TIMED	TIMED			

2.3 Aspect

2.4 Star Slots

2.5 FID Slots

A Summary

A.1 Status

V&V Scientist	Beth Sundheim
V&V Date (YYYY-MM-DD)	2006.03.02
V&V Edition	1
V&V Disposition and Status	OK
V&V Charge Time	7.23199997

A.2 Comments

Focal plane temperature is elevated. Calibration may be affected.