

# V&V Reference Report

## L2 ASCDS Version : 7.6.7

Observation 59685 - L2 Version 002  
Chandra X-Ray Center

L2 Processing Date: Mar 2 2006

## Contents

<b>1</b>	<b>Front</b>	<b>2</b>
<b>2</b>	<b>OBI</b>	<b>3</b>
2.1	OBI . . . . .	3
2.1.1	Images . . . . .	3
2.1.2	Bias . . . . .	3
2.1.3	Parameters . . . . .	4
2.1.4	Events . . . . .	4
2.2	Compared Parameters . . . . .	5
2.3	Aspect . . . . .	6
2.4	Star Slots . . . . .	8
2.5	FID Slots . . . . .	8
<b>A</b>	<b>Summary</b>	<b>9</b>
A.1	Status . . . . .	9
A.2	Comments . . . . .	9

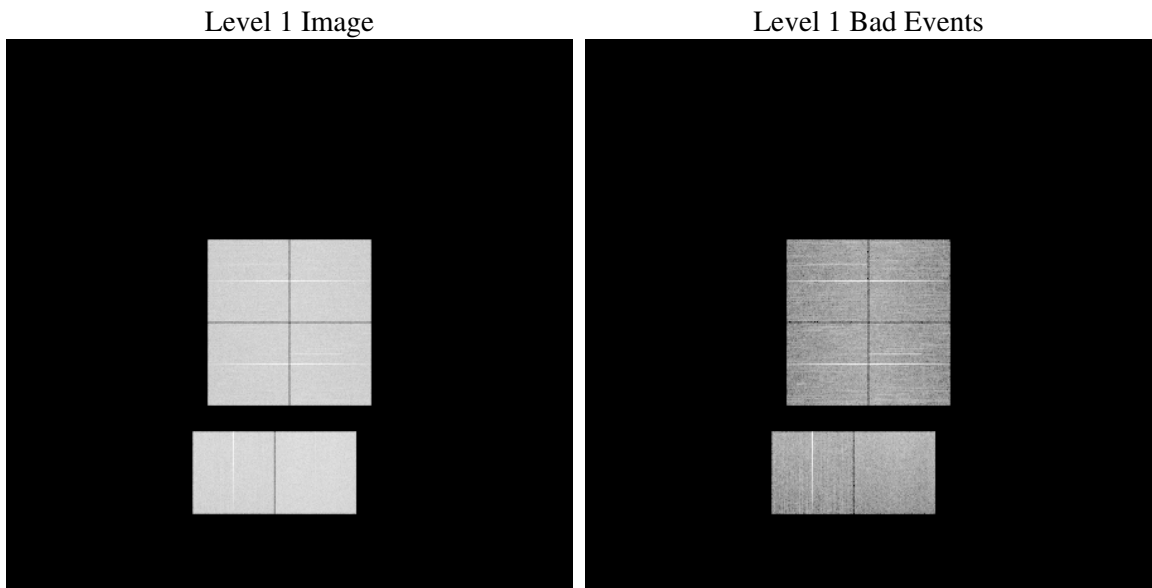
# 1 Front

seq_num	&#160
obs_id	59685
title	ACIS-012367 diagnostics
observer	CHANDRA engineering request/realtime commanding
object	&#160
dtcycle	0
cycle	P
ra_targ	0.0
dec_targ	0.0
ra_nom	213.02487577555
dec_nom	-23.982620614462
roll_nom	4.5326753082936
revision	2
ontime	15806.408129692
livetime	15606.257872478
ontime0	13907.239346296
ontime1	14101.738764852
ontime2	13515.163942069
ontime3	13751.590962231
ontime6	14798.629678339
ontime7	15806.408129692
l2events	2089483

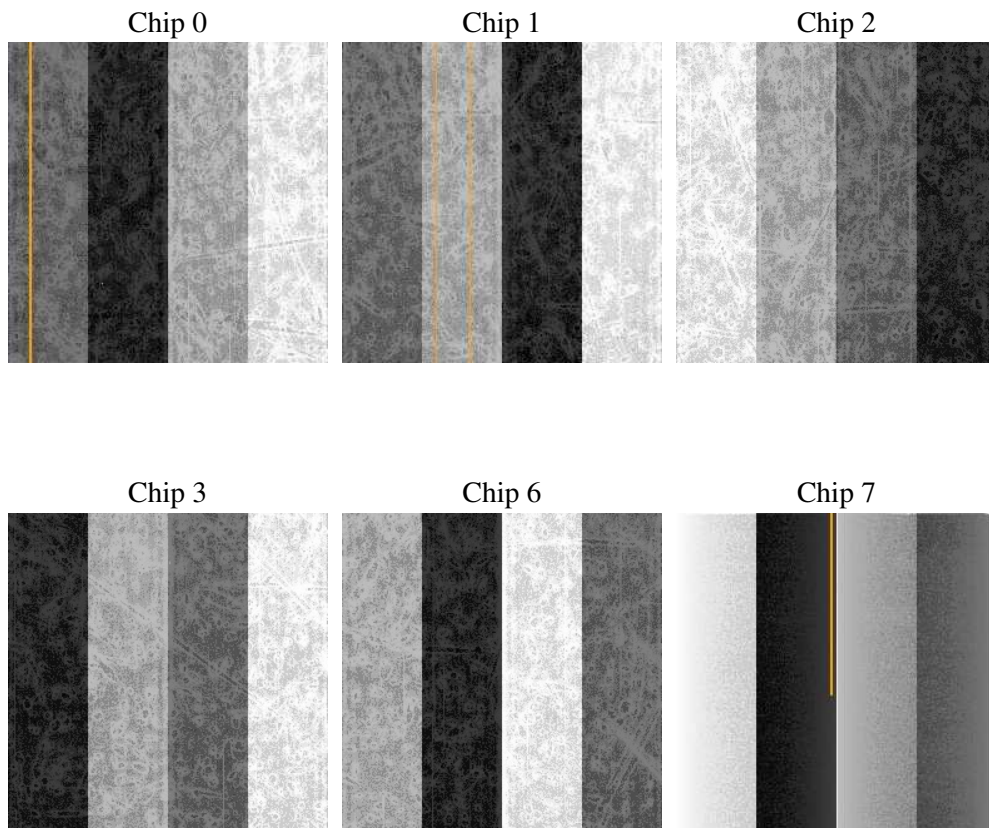
## 2 OBI

### 2.1 OBI

#### 2.1.1 Images



#### 2.1.2 Bias



### 2.1.3 Parameters

obi_num	0
ascdsver	7.6.7
caldbver	3.2.1
date	2006-03-02T15:12:41
revision	2

sched_exp_time	0.0
ontime	15809.619829088
ontime0	13910.410005689
ontime1	14104.868384242
ontime2	13518.252521455
ontime3	13754.843701631
ontime6	14801.677217752
ontime7	15809.619829088
l1events	2826642

### 2.1.4 Events

	ccd 0	ccd 1	ccd 2	ccd 3	ccd 6	ccd 7
level 1 events	443133	452548	441488	452398	496520	540555
rejected events	97928	99283	100956	104267	109967	117127
rejected %	22%	21%	22%	23%	22%	21%

	ccd 0	ccd 1	ccd 2	ccd 3	ccd 6	ccd 7
grade 0 events	189490	192137	190155	193491	208498	71124
	42%	42%	43%	42%	41%	13%
grade 1 events	1121	973	1241	1281	1092	238
	0%	0%	0%	0%	0%	0%
grade 2 events	60516	63237	57366	60015	66659	128457
	13%	13%	12%	13%	13%	23%
grade 3 events	22377	22306	22368	22992	24462	29633
	5%	4%	5%	5%	4%	5%
grade 4 events	22037	22461	22346	22987	24253	29224
	4%	4%	5%	5%	4%	5%
grade 5 events	6069	6422	5688	6559	7184	13732
	1%	1%	1%	1%	1%	2%
grade 6 events	50875	53192	48381	48726	62775	165066
	11%	11%	10%	10%	12%	30%
grade 7 events	90648	91820	93943	96347	101597	103081
	20%	20%	21%	21%	20%	19%

## 2.2 Compared Parameters

Parameter	Planned	Actual	Parameter	Planned	Actual
Instrument	ACIS	ACIS	Obspar format version number	6	6
Detector	ACIS-012367	ACIS-012367	Obspar file type	PREDICTED	ACTUAL
Grating	NONE	NONE	Obspar update status	NONE	UPDATED
Data mode	FAINT	FAINT	On-chip summing requested	N	N
Observation mode	SECONDARY	SECONDARY	Subarray requested	NONE	NONE
Pointing RA	0	213.0248757755546	Alternating exposures requested	N	N
Pointing Dec	0	-23.98262061446162	Primary exposure time	3.2	3.2
Pointing Roll	0.0	4.532675308293552			
SIM focus pos (mm)	-0.782348	-0.6828225247311905			
SIM defocus (mm)	0	0.8505141146731063			
SIM translation stage pos (mm)	-233.592463	250.466033080201			
SIM translation stage offset (mm)	0	-0.01005468664627074			
Observation start time	230732852.831119	230732851.80613			
Observation start date	2005-04-24T12:27:33	2005-04-24T12:27:31			
Observation end time	230756464.732193	230756463.7072			
Observation end date	2005-04-24T19:01:05	2005-04-24T19:01:03			
Read mode	TIMED	TIMED			

## 2.3 Aspect



## **2.4 Star Slots**

## **2.5 FID Slots**



## A Summary

### A.1 Status

V&V Scientist	Beth Sundheim
V&V Date (YYYY-MM-DD)	2006.03.02
V&V Edition	1
V&V Disposition and Status	OK
V&V Charge Time	15.8064081

### A.2 Comments