

V&V Reference Report

L2 ASCDS Version : 8.5.1.1

Observation 59676 - L2 Version 3
Chandra X-Ray Center

L2 Processing Date : Dec 22 2012

Contents

1	Front	2
2	OBI	3
2.1	OBI	3
2.1.1	Images	3
2.1.2	Bias	3
2.1.3	Parameters	4
2.1.4	Events	4
2.2	Compared Parameters	5
2.3	Star Slots	6
2.4	FID Slots	6
A	Summary	7
A.1	Status	7
A.2	Comments	7

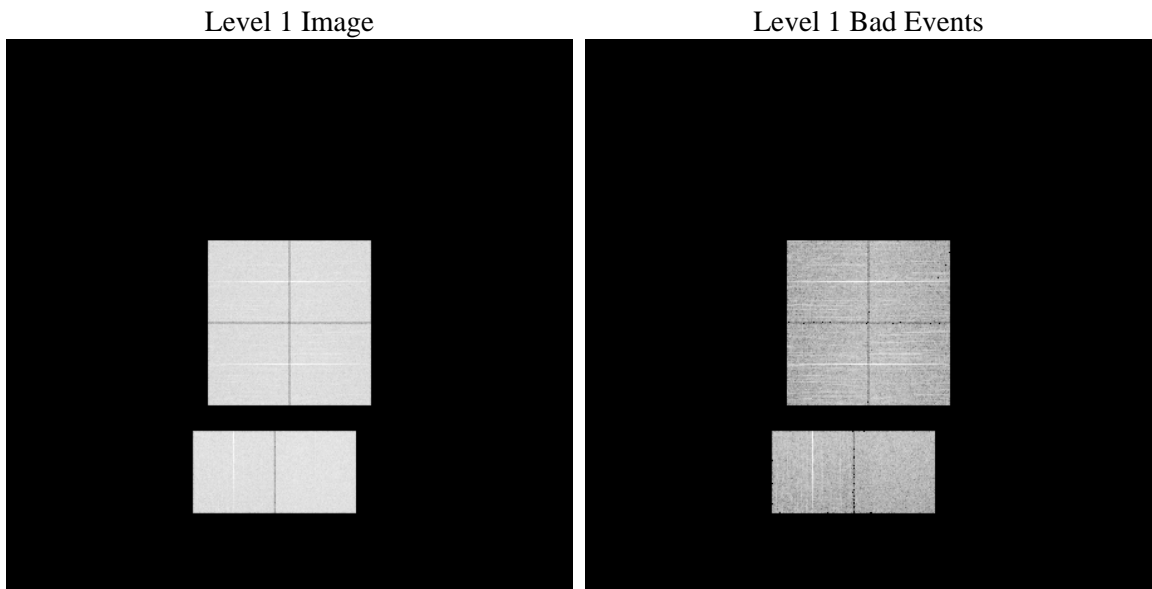
1 Front

seq_num	 	Sequence number
obs_id	59676	Observation id
title	ACIS-012367 diagnostics	Proposal title
observer	CHANDRA engineering request/realtime commanding	Principal investig
object	 	Source name
dtcycle	0	
cycle	P	events from which exps? Prim/Second/Both
ra_targ	0.0	Observer's specified target RA [deg]
dec_targ	0.0	Observer's specified target Dec [deg]
ra_nom	210.03592127952	Nominal RA [deg]
dec_nom	-39.992120001566	Nominal Dec [deg]
roll_nom	343.09946024188	Nominal Roll [deg]
revision	3	Processing version of data
ontime	8278.3999691606	Sum of GTIs [s]
livetime	8173.573884097	Livetime [s]
ontime0	7588.0719161332	Sum of GTIs [s]
ontime1	7786.9477697909	Sum of GTIs [s]
ontime2	7322.3116919398	Sum of GTIs [s]
ontime3	7575.1080745161	Sum of GTIs [s]
ontime6	7980.2300521135	Sum of GTIs [s]
ontime7	8278.3999691606	Sum of GTIs [s]
l2events	1105576	Number of level 2 events

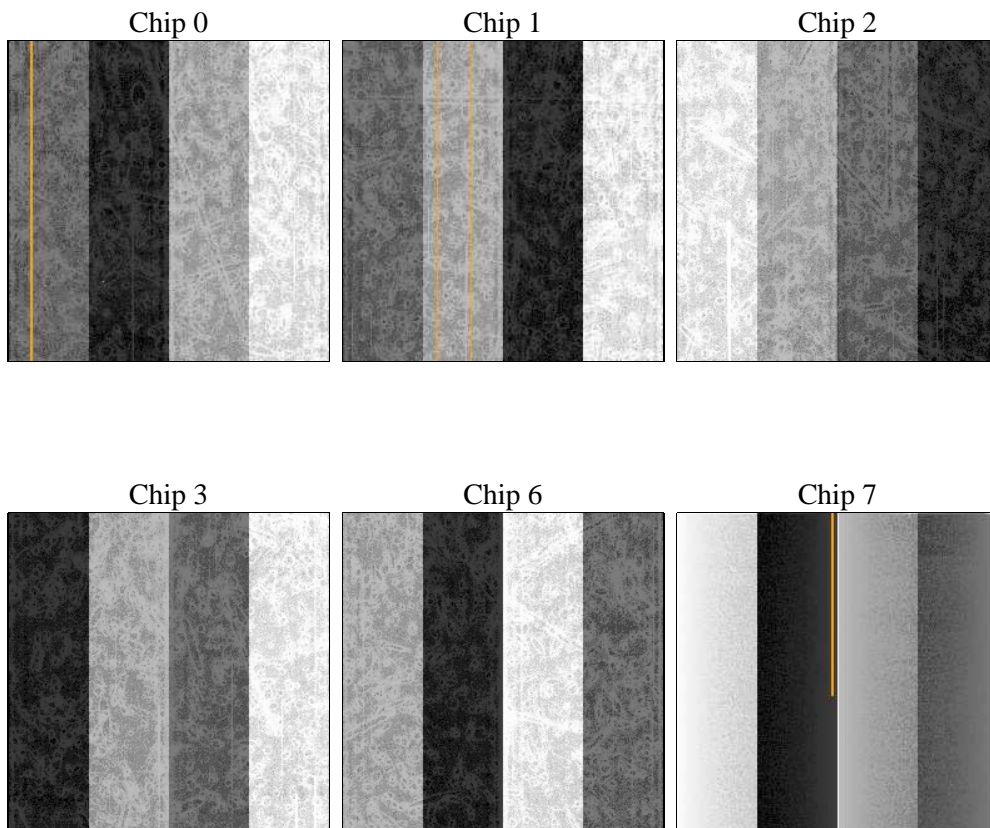
2 OBI

2.1 OBI

2.1.1 Images



2.1.2 Bias



2.1.3 Parameters

obi_num	0	Obi number	sched_exp_time	0.0	[s] Scheduled observation exposure time
ascdsver	8.5.1.1	Processing system revision	ontime	8278.3999691606	Sum of GTIs [s]
caldsver	4.5.5	 	ontime0	7588.0719161332	Sum of GTIs [s]
date	2012-12-22T20:31:22	Date and time of file creation	ontime1	7786.9477697909	Sum of GTIs [s]
revision	3	Processing version of data	ontime2	7322.3116919398	Sum of GTIs [s]
			ontime3	7575.1080745161	Sum of GTIs [s]
			ontime6	7980.2300521135	Sum of GTIs [s]
			ontime7	8278.3999691606	Sum of GTIs [s]
			l1events	1489900	Number of level 1 events

2.1.4 Events

	ccd 0	ccd 1	ccd 2	ccd 3	ccd 6	ccd 7		ccd 0	ccd 1	ccd 2	ccd 3	ccd 6	ccd 7
level 1 events	236148	241323	232960	242414	259488	277567	grade 0 events	100902	102430	99935	103197	109205	52992
rejected events	53103	53375	54206	57688	57114	52003		42%	42%	42%	42%	42%	19%
rejected %	22%	22%	23%	23%	22%	18%	grade 1 events	597	554	674	723	548	174
								0%	0%	0%	0%	0%	0%
							grade 2 events	31970	33527	30186	31407	35110	49182
								13%	13%	12%	12%	13%	17%
							grade 3 events	11680	12073	11639	12153	12831	22706
								4%	5%	4%	5%	4%	8%
							grade 4 events	11989	12006	11850	12128	12637	22015
								5%	4%	5%	5%	4%	7%
							grade 5 events	3291	3405	3027	3570	3711	9081
								1%	1%	1%	1%	1%	3%
							grade 6 events	26504	27912	25144	25841	32591	78669
								11%	11%	10%	10%	12%	28%
							grade 7 events	49215	49416	50505	53395	52855	42748
								20%	20%	21%	22%	20%	15%

2.2 Compared Parameters

Parameter	Planned	Actual
Instrument	ACIS	ACIS
Detector	ACIS-012367	ACIS-012367
Grating	NONE	NONE
Data mode	FAINT	FAINT
Observation mode	SECONDARY	SECONDARY
[deg] Pointing RA	0	210.0359212795218
[deg] Pointing Dec	0	-39.99212000156556
[deg] Pointing Roll	0.0	343.0994602418787
[mm] SIM focus pos	-0.782348	-0.7809083437167272
[mm] SIM defocus	0	0.7524282956875696
[mm] SIM translation stage pos	-233.592463	250.4635187648994
[mm] SIM translation stage offset	0	-0.007540371344731511
[s] Observation start time (MET)	231236302.10404	231236301.07903
Observation start date	2005-04-30T08:18:22	2005-04-30T08:18:21
[s] Observation end time (MET)	231259891.455114	231259890.43011
Observation end date	2005-04-30T14:51:31	2005-04-30T14:51:30
Read mode	TIMED	TIMED

Parameter	Planned	Actual
Obspar format version number	7	7
Obspar file type	PREDICTED	ACTUAL
Obspar update status	NONE	UPDATED
On-chip summing requested	N	N
Subarray requested	NONE	NONE
Alternating exposures requested	N	N
[s] Primary exposure time	3.2	3.2

2.3 Star Slots

2.4 FID Slots

A Summary

A.1 Status

V&V Scientist	Beth Sundheim
V&V Date (YYYY-MM-DD)	2013.01.09
V&V Edition	1
V&V Disposition and Status	OK
V&V Charge Time	8.2783999691606

A.2 Comments