

V&V Reference Report

L2 ASCDS Version : 7.6.7

Observation 59676 - L2 Version 002
Chandra X-Ray Center

L2 Processing Date: Mar 2 2006

Contents

1	Front	2
2	OBI	3
2.1	OBI	3
2.1.1	Images	3
2.1.2	Bias	3
2.1.3	Parameters	4
2.1.4	Events	4
2.2	Compared Parameters	5
2.3	Aspect	6
2.4	Star Slots	8
2.5	FID Slots	8
A	Summary	9
A.1	Status	9
A.2	Comments	9

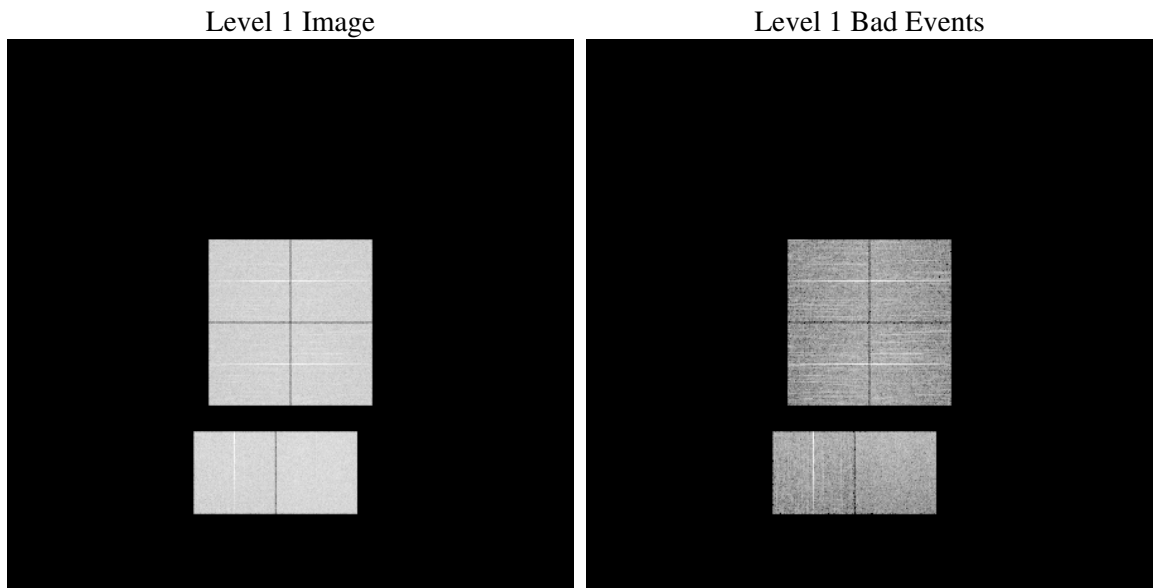
1 Front

seq_num	
obs_id	59676
title	ACIS-012367 diagnostics
observer	CHANDRA engineering request/realtime commanding
object	
dtcycle	0
cycle	P
ra_targ	0.0
dec_targ	0.0
ra_nom	210.0358866829
dec_nom	-39.992111866997
roll_nom	343.09943799762
revision	2
ontime	8277.8941052556
livetime	8173.0744257454
ontime0	7587.6070922315
ontime1	7785.3477697968
ontime2	7321.9289480448
ontime3	7574.5611706078
ontime6	7979.888348192
ontime7	8277.8941052556
l2events	1095139

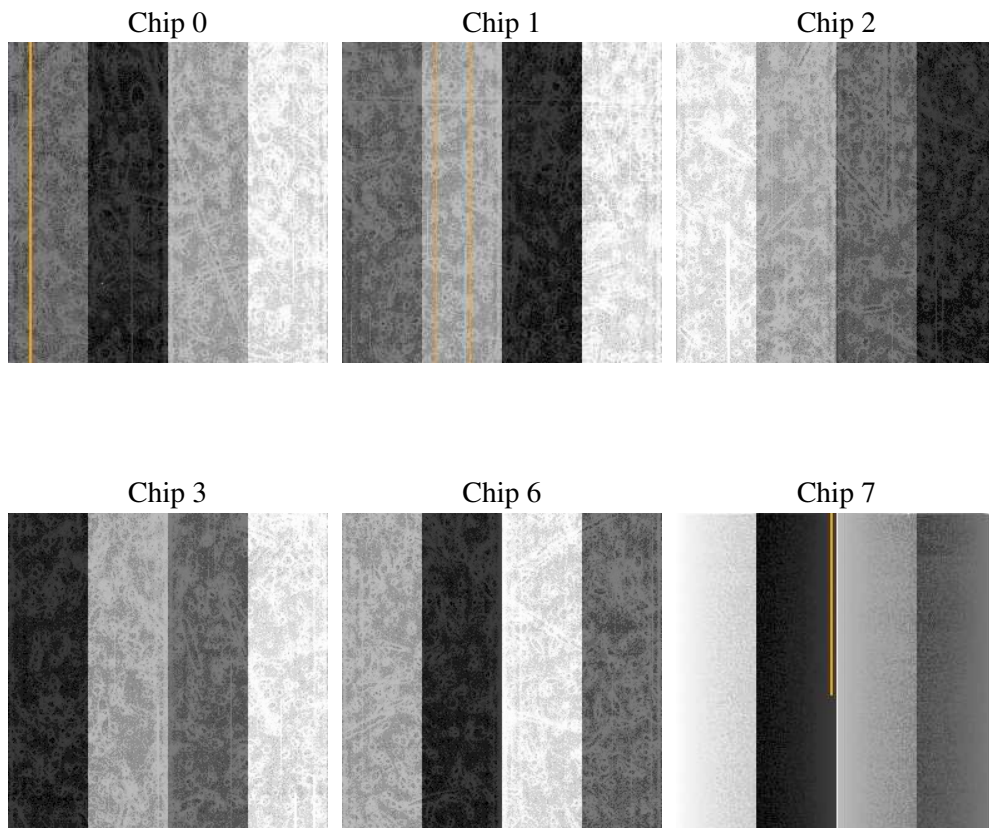
2 OBI

2.1 OBI

2.1.1 Images



2.1.2 Bias



2.1.3 Parameters

obi_num	0
ascdsver	7.6.7
caldbver	3.2.1
date	2006-03-02T16:08:36
revision	2

sched_exp_time	0.0
ontime	8280.7740767598
ontime0	7590.4460237324
ontime1	7788.1456612945
ontime2	7324.6857995391
ontime3	7577.4821821153
ontime6	7982.6041597128
ontime7	8280.7740767598
l1events	1489900

2.1.4 Events

	ccd 0	ccd 1	ccd 2	ccd 3	ccd 6	ccd 7
level 1 events	236148	241323	232960	242414	259488	277567
rejected events	53184	53446	54294	57754	57195	62271
rejected %	22%	22%	23%	23%	22%	22%

	ccd 0	ccd 1	ccd 2	ccd 3	ccd 6	ccd 7
grade 0 events	100902	102430	99934	103197	109205	35356
	42%	42%	42%	42%	42%	12%
grade 1 events	597	554	674	723	548	110
	0%	0%	0%	0%	0%	0%
grade 2 events	31970	33527	30187	31407	35110	65475
	13%	13%	12%	12%	13%	23%
grade 3 events	11680	12072	11639	12153	12831	15092
	4%	5%	4%	5%	4%	5%
grade 4 events	11989	12006	11851	12128	12637	14533
	5%	4%	5%	5%	4%	5%
grade 5 events	3291	3405	3025	3570	3711	7185
	1%	1%	1%	1%	1%	2%
grade 6 events	26504	27912	25144	25841	32590	84916
	11%	11%	10%	10%	12%	30%
grade 7 events	49215	49417	50506	53395	52856	54900
	20%	20%	21%	22%	20%	19%

2.2 Compared Parameters

Parameter	Planned	Actual	Parameter	Planned	Actual
Instrument	ACIS	ACIS	Obspar format version number	6	6
Detector	ACIS-012367	ACIS-012367	Obspar file type	PREDICTED	ACTUAL
Grating	NONE	NONE	Obspar update status	NONE	UPDATED
Data mode	FAINT	FAINT	On-chip summing requested	N	N
Observation mode	SECONDARY	SECONDARY	Subarray requested	NONE	NONE
Pointing RA	0	210.0358866828998	Alternating exposures requested	N	N
Pointing Dec	0	-39.99211186699697	Primary exposure time	3.2	3.2
Pointing Roll	0.0	343.0994379976232			
SIM focus pos (mm)	-0.782348	-0.7809083437167272			
SIM defocus (mm)	0	0.7524282956875696			
SIM translation stage pos (mm)	-233.592463	250.4635187648994			
SIM translation stage offset (mm)	0	-0.007540371344731511			
Observation start time	231236302.10404	231236301.07903			
Observation start date	2005-04-30T08:18:22	2005-04-30T08:18:21			
Observation end time	231259891.455114	231259890.43011			
Observation end date	2005-04-30T14:51:31	2005-04-30T14:51:30			
Read mode	TIMED	TIMED			

2.3 Aspect

2.4 Star Slots

2.5 FID Slots

A Summary

A.1 Status

V&V Scientist	Beth Sundheim
V&V Date (YYYY-MM-DD)	2006.03.02
V&V Edition	1
V&V Disposition and Status	OK
V&V Charge Time	8.2778941

A.2 Comments