

V&V Reference Report

L2 ASCDS Version : 7.6.7

Observation 59666 - L2 Version 002
Chandra X-Ray Center

L2 Processing Date: Mar 3 2006

Contents

1	Front	2
2	OBI	3
2.1	OBI	3
2.1.1	Images	3
2.1.2	Bias	3
2.1.3	Parameters	4
2.1.4	Events	4
2.2	Compared Parameters	5
2.3	Aspect	6
2.4	Star Slots	8
2.5	FID Slots	8
A	Summary	9
A.1	Status	9
A.2	Comments	9

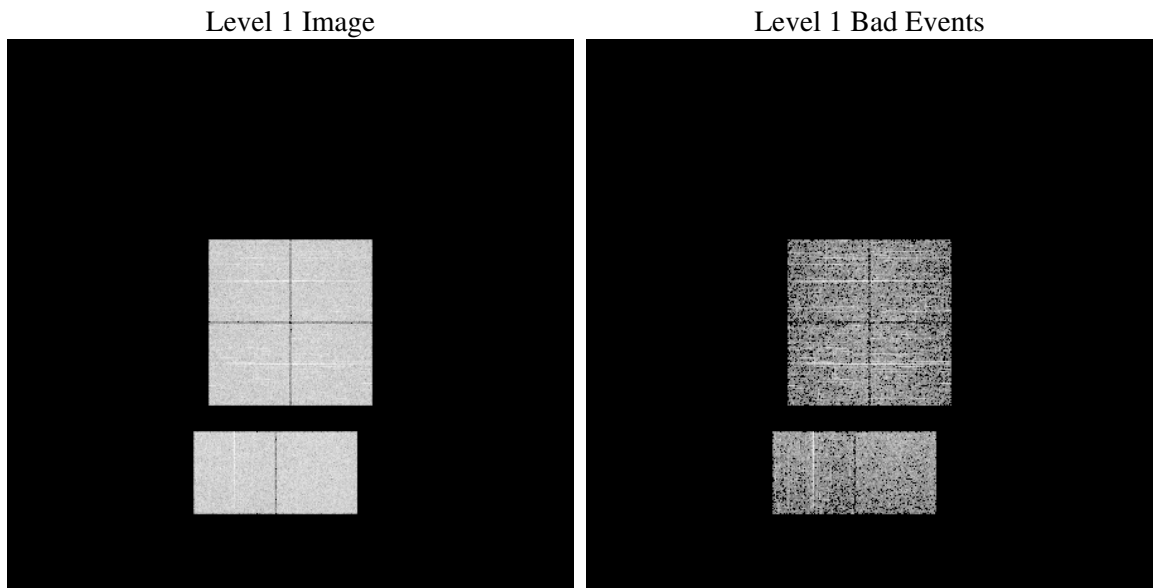
1 Front

seq_num	
obs_id	59666
title	ACIS-012367 diagnostics
observer	CHANDRA engineering request/realtime commanding
object	
dtcycle	0
cycle	P
ra_targ	0.0
dec_targ	0.0
ra_nom	253.99016211046
dec_nom	-24.973710767345
roll_nom	78.838420211366
revision	2
ontime	2220.7999917269
livetime	2192.6788850264
ontime0	2155.9803155363
ontime1	2155.9803155661
ontime2	2130.0523337722
ontime3	2159.2212762535
ontime6	2220.7999917269
ontime7	2220.7999917269
l2events	314783

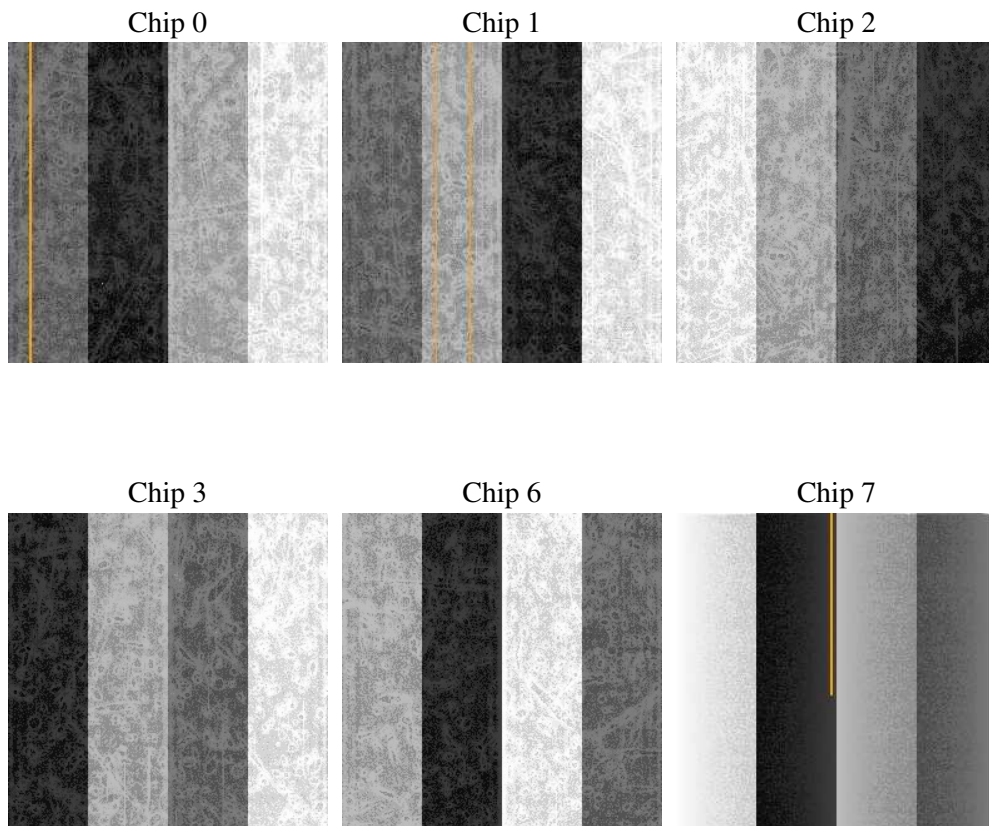
2 OBI

2.1 OBI

2.1.1 Images



2.1.2 Bias



2.1.3 Parameters

obi_num	0
ascdsver	7.6.7
caldbver	3.2.1
date	2006-03-03T15:12:38
revision	2

sched_exp_time	0.0
ontime	2223.3345610499
ontime0	2158.5148848593
ontime1	2158.5148848891
ontime2	2132.5869030952
ontime3	2161.7558455765
ontime6	2223.3345610499
ontime7	2223.3345610499
llevents	417666

2.1.4 Events

	ccd 0	ccd 1	ccd 2	ccd 3	ccd 6	ccd 7
level 1 events	67257	67607	68218	69383	71761	73440
rejected events	13871	13775	15009	14931	14232	14884
rejected %	20%	20%	22%	21%	19%	20%

	ccd 0	ccd 1	ccd 2	ccd 3	ccd 6	ccd 7
grade 0 events	29290	29308	29769	30371	30844	9954
	43%	43%	43%	43%	42%	13%
grade 1 events	165	131	185	171	175	23
	0%	0%	0%	0%	0%	0%
grade 2 events	9359	9775	8876	9311	9997	18101
	13%	14%	13%	13%	13%	24%
grade 3 events	3411	3421	3546	3652	3648	4057
	5%	5%	5%	5%	5%	5%
grade 4 events	3443	3397	3512	3565	3655	3998
	5%	5%	5%	5%	5%	5%
grade 5 events	847	872	877	946	959	1717
	1%	1%	1%	1%	1%	2%
grade 6 events	7883	7931	7506	7553	9385	22446
	11%	11%	11%	10%	13%	30%
grade 7 events	12859	12772	13947	13814	13098	13144
	19%	18%	20%	19%	18%	17%

2.2 Compared Parameters

Parameter	Planned	Actual	Parameter	Planned	Actual
Instrument	ACIS	ACIS	Obspar format version number	6	6
Detector	ACIS-012367	ACIS-012367	Obspar file type	PREDICTED	ACTUAL
Grating	NONE	NONE	Obspar update status	NONE	UPDATED
Data mode	FAINT	FAINT	On-chip summing requested	N	N
Observation mode	SECONDARY	SECONDARY	Subarray requested	NONE	NONE
Pointing RA	0	253.9901621104562	Alternating exposures requested	N	N
Pointing Dec	0	-24.97371076734535	Primary exposure time	3.2	3.2
Pointing Roll	0.0	78.83842021136554			
SIM focus pos (mm)	-0.782348	-0.6828225247311905			
SIM defocus (mm)	0	0.8505141146731063			
SIM translation stage pos (mm)	-233.592463	250.4635187648994			
SIM translation stage offset (mm)	0	-0.007540371344731511			
Observation start time	232112468.043935	232112467.01893			
Observation start date	2005-05-10T11:41:08	2005-05-10T11:41:07			
Observation end time	232118287.994207	232118286.96919			
Observation end date	2005-05-10T13:18:08	2005-05-10T13:18:06			
Read mode	TIMED	TIMED			

2.3 Aspect

2.4 Star Slots

2.5 FID Slots

A Summary

A.1 Status

V&V Scientist	Beth Sundheim
V&V Date (YYYY-MM-DD)	2006.03.03
V&V Edition	1
V&V Disposition and Status	OK
V&V Charge Time	2.22079999

A.2 Comments