

# V&V Reference Report

## L2 ASCDS Version : 7.6.7.1

Observation 59643 - L2 Version 002  
Chandra X-Ray Center

L2 Processing Date : Mar 8 2006

## Contents

<b>1</b>	<b>Front</b>	<b>2</b>
<b>2</b>	<b>OBI</b>	<b>3</b>
2.1	OBI . . . . .	3
2.1.1	Images . . . . .	3
2.1.2	Bias . . . . .	3
2.1.3	Parameters . . . . .	4
2.1.4	Events . . . . .	4
2.2	Compared Parameters . . . . .	5
2.3	Aspect . . . . .	6
2.4	Star Slots . . . . .	8
2.5	FID Slots . . . . .	8
<b>A</b>	<b>Summary</b>	<b>9</b>
A.1	Status . . . . .	9
A.2	Comments . . . . .	9

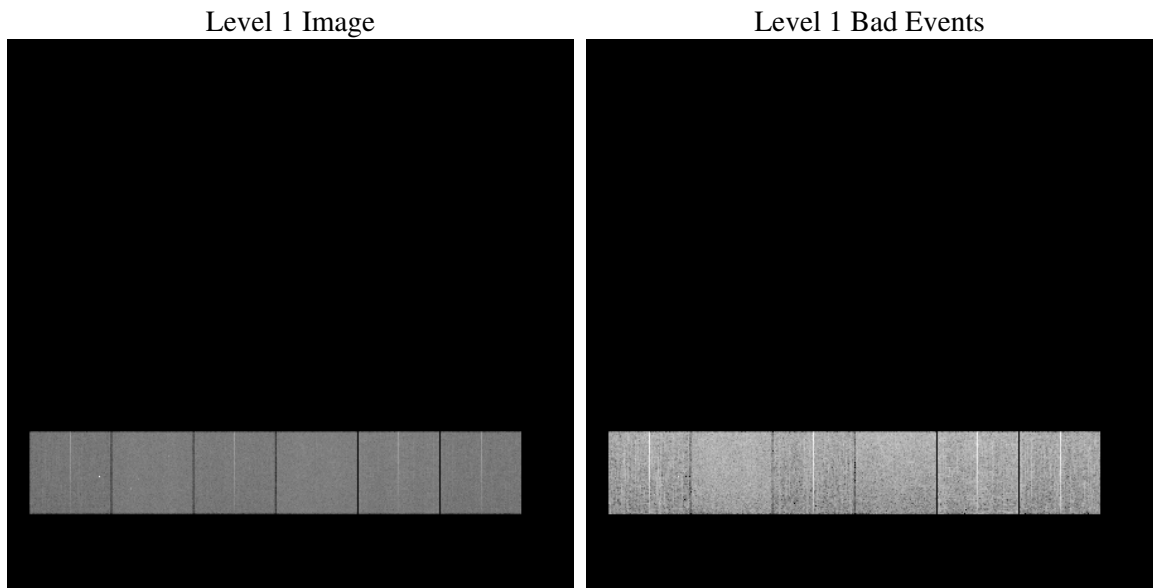
# 1 Front

seq_num	&#160
obs_id	59643
title	ACIS-456789 diagnostics
observer	CHANDRA engineering request/realtime commanding
object	&#160
dtcycle	0
cycle	P
ra_targ	0.0
dec_targ	0.0
ra_nom	253.02965904045
dec_nom	-48.479251660456
roll_nom	13.680959717974
revision	2
ontime	8243.1999692917
livetime	8138.8196078214
ontime4	7047.2792405784
ontime5	8243.1999692917
ontime6	7591.7634502053
ontime7	8243.1999692917
ontime8	7857.5237139165
ontime9	7394.0635529459
l2events	1065966

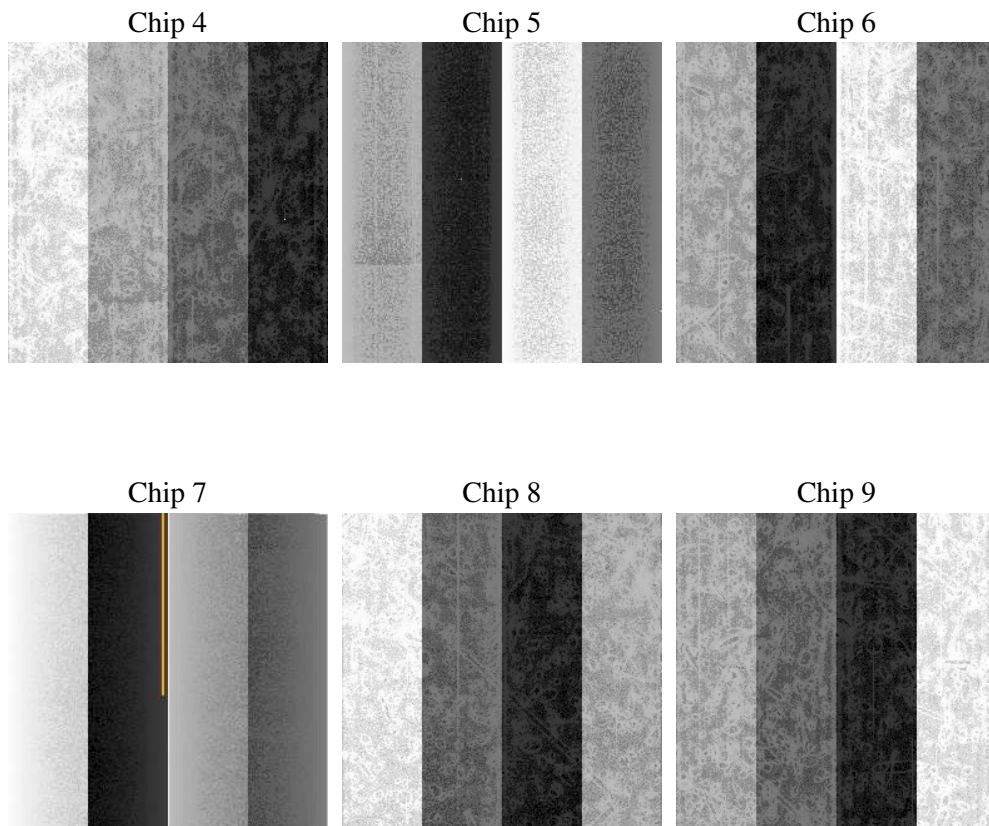
## 2 OBI

### 2.1 OBI

#### 2.1.1 Images



#### 2.1.2 Bias



### 2.1.3 Parameters

obi_num	0
ascdsver	7.6.7.1
caldsver	3.2.1
date	2006-03-09T01:08:48
revision	2

sched_exp_time	0.0
ontime	8284.016037643
ontime4	7084.8543286622
ontime5	8284.016037643
ontime6	7629.338558197
ontime7	8284.016037643
ontime8	7895.0988019705
ontime9	7428.3976806402
l1events	1489122

### 2.1.4 Events

	ccd 4	ccd 5	ccd 6	ccd 7	ccd 8	ccd 9
level 1 events	220676	254314	243062	270744	266610	233716
rejected events	56124	63229	54323	58927	64910	56534
rejected %	25%	24%	22%	21%	24%	24%

	ccd 4	ccd 5	ccd 6	ccd 7	ccd 8	ccd 9
grade 0 events	96104	19684	102750	35894	109622	97892
	43%	7%	42%	13%	41%	41%
grade 1 events	719	110	503	121	601	567
	0%	0%	0%	0%	0%	0%
grade 2 events	26154	89767	33206	64549	35874	30499
	11%	35%	13%	23%	13%	13%
grade 3 events	10932	5804	11666	14836	13365	11415
	4%	2%	4%	5%	5%	4%
grade 4 events	10938	5587	11875	14801	13148	11515
	4%	2%	4%	5%	4%	4%
grade 5 events	3204	6035	3538	6658	4402	3672
	1%	2%	1%	2%	1%	1%
grade 6 events	21242	71112	30138	82739	30641	26590
	9%	27%	12%	30%	11%	11%
grade 7 events	51383	56215	49386	51146	58957	51566
	23%	22%	20%	18%	22%	22%

## 2.2 Compared Parameters

Parameter	Planned	Actual	Parameter	Planned	Actual
Instrument	ACIS	ACIS	Obspar format version number	6	6
Detector	ACIS-456789	ACIS-456789	Obspar file type	PREDICTED	ACTUAL
Grating	NONE	NONE	Obspar update status	NONE	UPDATED
Data mode	FAINT	FAINT	On-chip summing requested	N	N
Observation mode	SECONDARY	SECONDARY	Subarray requested	NONE	NONE
Pointing RA	0	253.0296590404537	Alternating exposures requested	N	N
Pointing Dec	0	-48.47925166045607	Primary exposure time	3.2	3.2
Pointing Roll	0.0	13.68095971797444			
SIM focus pos (mm)	-0.684267	-0.6828225247311905			
SIM defocus (mm)	0	0.8505141146731063			
SIM translation stage pos (mm)	-190.132523	250.466033080201			
SIM translation stage offset (mm)	0	-0.01005468664627074			
Observation start time	233748044.218454	233748043.19344			
Observation start date	2005-05-29T10:00:44	2005-05-29T10:00:43			
Observation end time	233771924.669543	233771923.64453			
Observation end date	2005-05-29T16:38:45	2005-05-29T16:38:43			
Read mode	TIMED	TIMED			

## 2.3 Aspect



## **2.4 Star Slots**

## **2.5 FID Slots**



## A Summary

### A.1 Status

V&V Scientist	Beth Sundheim
V&V Date (YYYY-MM-DD)	2006.03.09
V&V Edition	1
V&V Disposition and Status	OK
V&V Charge Time	8.24319996

### A.2 Comments