

V&V Reference Report

L2 ASCDS Version : 8.5.1.1

Observation 59589 - L2 Version 3
Chandra X-Ray Center

L2 Processing Date : Dec 25 2012

Contents

1	Front	2
2	OBI	3
2.1	OBI	3
2.1.1	Images	3
2.1.2	Bias	3
2.1.3	Parameters	4
2.1.4	Events	4
2.2	Compared Parameters	5
2.3	Star Slots	6
2.4	FID Slots	6
A	Summary	7
A.1	Status	7
A.2	Comments	7

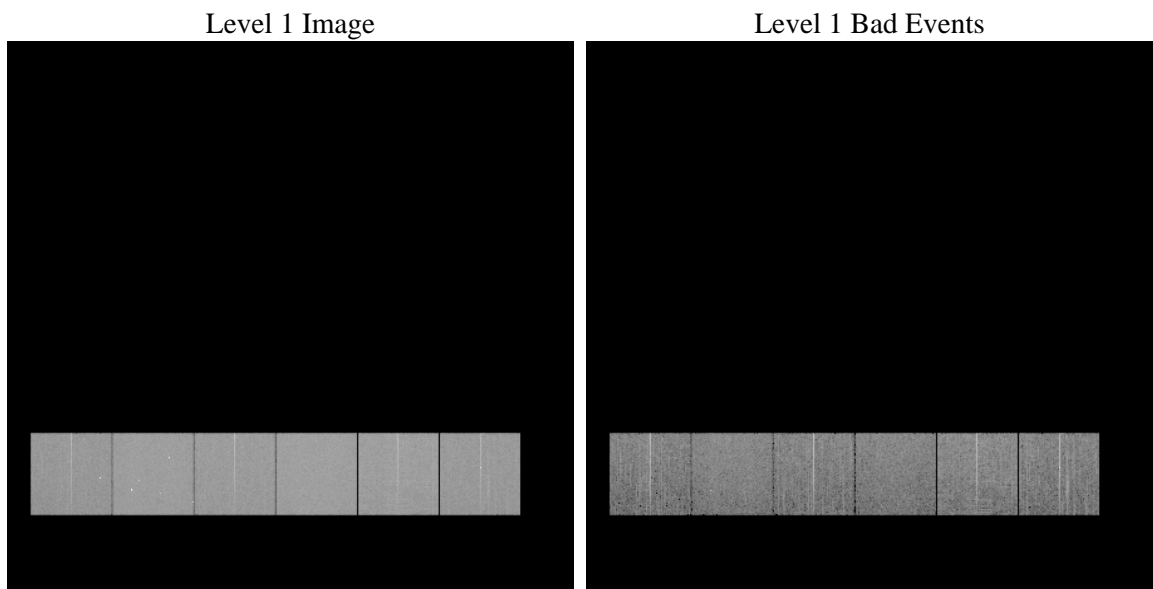
1 Front

seq_num	 	Sequence number
obs_id	59589	Observation id
title	ACIS-456789 diagnostics	Proposal title
observer	CHANDRA engineering request/realtime commanding	Principal investig
object	 	Source name
dtcycle	0	
cycle	P	events from which exps? Prim/Second/Both
ra_targ	0.0	Observer's specified target RA [deg]
dec_targ	0.0	Observer's specified target Dec [deg]
ra_nom	268.98240343499	Nominal RA [deg]
dec_nom	3.1774243706565	Nominal Dec [deg]
roll_nom	199.27965550294	Nominal Roll [deg]
revision	3	Processing version of data
ontime	7795.1999709606	Sum of GTIs [s]
livetime	7696.4924552224	Livetime [s]
ontime4	6478.504640907	Sum of GTIs [s]
ontime5	7795.1999709606	Sum of GTIs [s]
ontime6	7078.9460350275	Sum of GTIs [s]
ontime7	7795.1999709606	Sum of GTIs [s]
ontime8	7299.3317657709	Sum of GTIs [s]
ontime9	6799.1961107552	Sum of GTIs [s]
l2events	1000609	Number of level 2 events

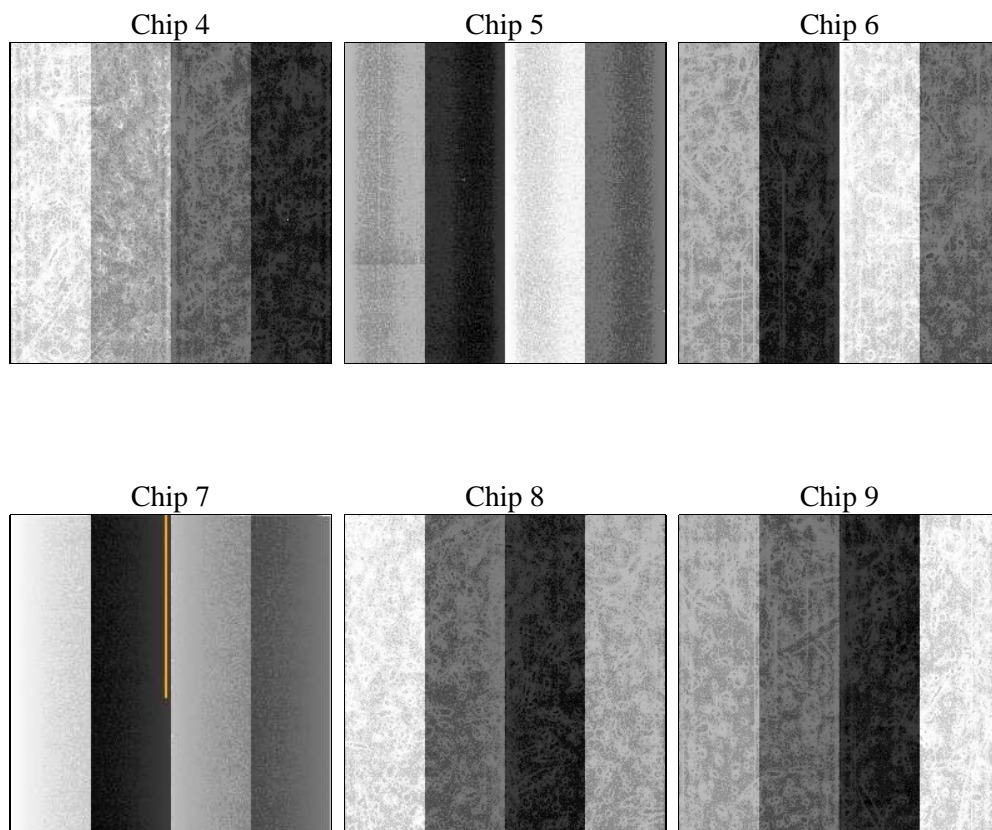
2 OBI

2.1 OBI

2.1.1 Images



2.1.2 Bias



2.1.3 Parameters

obi_num	0	Obi number	sched_exp_time	0.0	[s] Scheduled observation exposure time
ascdsver	8.5.1.1	Processing system revision	ontime	7795.1999709606	Sum of GTIs [s]
caldsver	4.5.5	 	ontime4	6478.504640907	Sum of GTIs [s]
date	2012-12-25T10:59:35	Date and time of file creation	ontime5	7795.1999709606	Sum of GTIs [s]
revision	3	Processing version of data	ontime6	7078.9460350275	Sum of GTIs [s]
			ontime7	7795.1999709606	Sum of GTIs [s]
			ontime8	7299.3317657709	Sum of GTIs [s]
			ontime9	6799.1961107552	Sum of GTIs [s]
			l1events	1404394	Number of level 1 events

2.1.4 Events

	ccd 4	ccd 5	ccd 6	ccd 7	ccd 8	ccd 9		ccd 4	ccd 5	ccd 6	ccd 7	ccd 8	ccd 9
level 1 events	201860	248147	228595	259195	251201	215396	grade 0 events	86735	43011	93931	49619	100082	87725
rejected events	52769	56216	55267	50874	64713	55438		42%	17%	41%	19%	39%	40%
rejected %	26%	22%	24%	19%	25%	25%	grade 1 events	717	223	498	166	526	1598
								0%	0%	0%	0%	0%	0%
							grade 2 events	23480	67454	30290	45733	33212	27594
								11%	27%	13%	17%	13%	12%
							grade 3 events	9868	11478	10835	21040	12277	10260
								4%	4%	4%	8%	4%	4%
							grade 4 events	9915	11398	10757	20503	12439	10270
								4%	4%	4%	7%	4%	4%
							grade 5 events	3066	8731	3527	9003	4510	3714
								1%	3%	1%	3%	1%	1%
							grade 6 events	19093	58656	27602	71493	28548	24109
								9%	23%	12%	27%	11%	11%
							grade 7 events	48986	47196	51155	41638	59607	50126
								24%	19%	22%	16%	23%	23%

2.2 Compared Parameters

Parameter	Planned	Actual
Instrument	ACIS	ACIS
Detector	ACIS-456789	ACIS-456789
Grating	NONE	NONE
Data mode	FAINT	FAINT
Observation mode	SECONDARY	SECONDARY
[deg] Pointing RA	0	268.9824034349873
[deg] Pointing Dec	0	3.17742437065654
[deg] Pointing Roll	0.0	199.2796555029403
[mm] SIM focus pos	-0.684267	-0.6828225247311905
[mm] SIM defocus	0	0.8505141146731063
[mm] SIM translation stage pos	-190.132523	250.466033080201
[mm] SIM translation stage offset	0	-0.01005468664627074
[s] Observation start time (MET)	236452463.791907	236452462.7669
Observation start date	2005-06-29T17:14:24	2005-06-29T17:14:22
[s] Observation end time (MET)	236467484.142594	236467483.11759
Observation end date	2005-06-29T21:24:44	2005-06-29T21:24:43
Read mode	TIMED	TIMED

Parameter	Planned	Actual
Obspar format version number	7	7
Obspar file type	PREDICTED	ACTUAL
Obspar update status	NONE	UPDATED
On-chip summing requested	N	N
Subarray requested	NONE	NONE
Alternating exposures requested	N	N
[s] Primary exposure time	3.2	3.2

2.3 Star Slots

2.4 FID Slots

A Summary

A.1 Status

V&V Scientist	Jen Lauer
V&V Date (YYYY-MM-DD)	2013.01.17
V&V Edition	1
V&V Disposition and Status	OK
V&V Charge Time	7.7951999709606

A.2 Comments