

V&V Reference Report

L2 ASCDS Version : 7.6.7.1

Observation 59587 - L2 Version 002
Chandra X-Ray Center

L2 Processing Date : Mar 12 2006

Contents

1	Front	2
2	OBI	3
2.1	OBI	3
2.1.1	Images	3
2.1.2	Bias	3
2.1.3	Parameters	4
2.1.4	Events	4
2.2	Compared Parameters	5
2.3	Aspect	6
2.4	Star Slots	8
2.5	FID Slots	8
A	Summary	9
A.1	Status	9
A.2	Comments	9

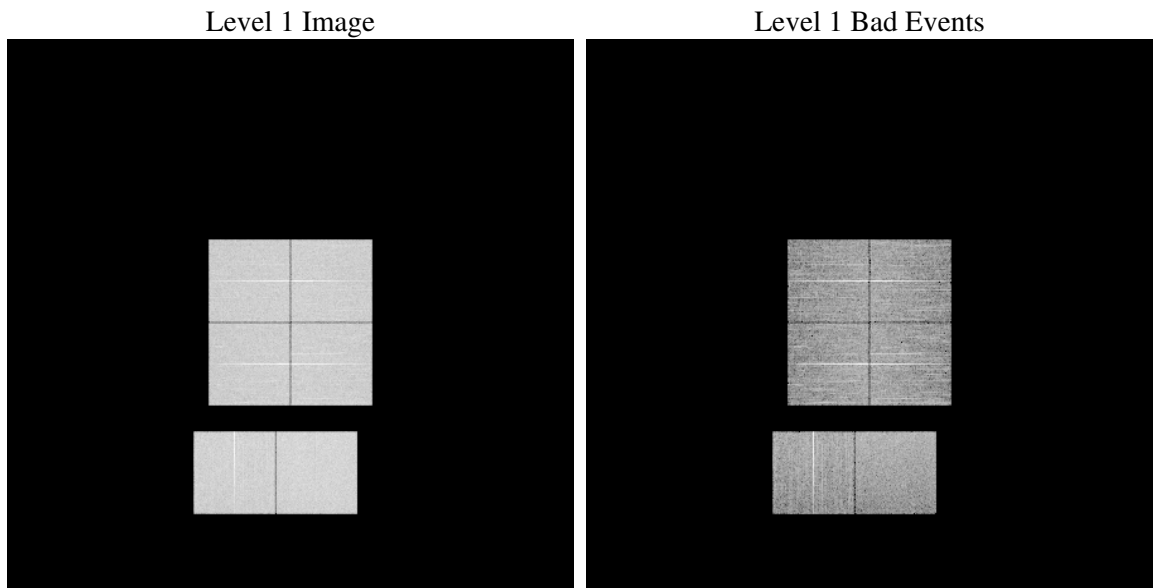
1 Front

seq_num	
obs_id	59587
title	ACIS-012367 diagnostics
observer	CHANDRA engineering request/realtime commanding
object	
dtcycle	0
cycle	P
ra_targ	0.0
dec_targ	0.0
ra_nom	248.61225127114
dec_nom	-21.426212684064
roll_nom	260.64450005718
revision	2
ontime	8275.1999691725
livetime	8170.4144044356
ontime0	7844.1500694156
ontime1	7944.6199697554
ontime2	7500.6064875424
ontime3	7724.2337984741
ontime6	8106.6690840721
ontime7	8275.1999691725
l2events	1063366

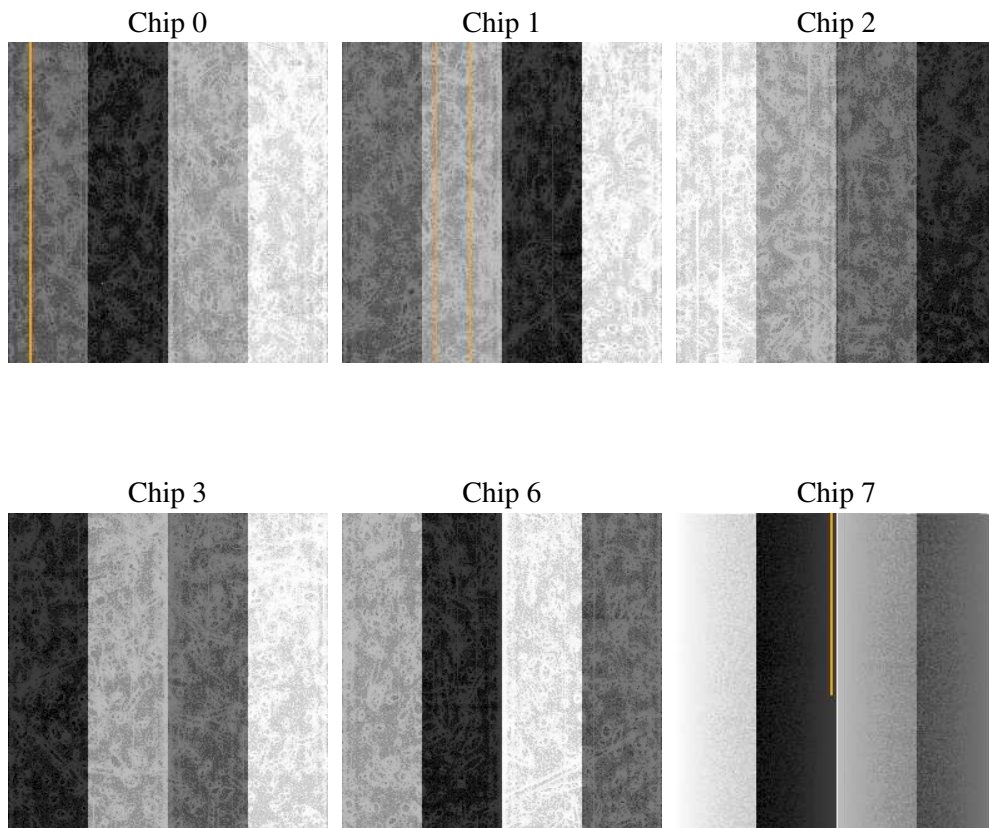
2 OBI

2.1 OBI

2.1.1 Images



2.1.2 Bias



2.1.3 Parameters

obi_num	0
ascdsver	7.6.7.1
caldbver	3.2.1
date	2006-03-12T06:39:36
revision	2

sched_exp_time	0.0
ontime	8277.533788234
ontime0	7846.4838884771
ontime1	7946.9537888169
ontime2	7502.9403066039
ontime3	7726.5676175356
ontime6	8109.0029031336
ontime7	8277.533788234
l1events	1486708

2.1.4 Events

	ccd 0	ccd 1	ccd 2	ccd 3	ccd 6	ccd 7
level 1 events	236950	242426	235187	242072	258779	271294
rejected events	56724	59029	61013	62106	64838	64364
rejected %	23%	24%	25%	25%	25%	23%

	ccd 0	ccd 1	ccd 2	ccd 3	ccd 6	ccd 7
grade 0 events	99192	99555	97807	101393	104071	31853
	41%	41%	41%	41%	40%	11%
grade 1 events	563	507	647	643	495	125
	0%	0%	0%	0%	0%	0%
grade 2 events	31366	33409	29005	30191	34508	64629
	13%	13%	12%	12%	13%	23%
grade 3 events	11639	11416	11324	11651	11910	13802
	4%	4%	4%	4%	4%	5%
grade 4 events	11592	11472	11393	11703	11680	13631
	4%	4%	4%	4%	4%	5%
grade 5 events	3401	3449	3125	3545	3956	7070
	1%	1%	1%	1%	1%	2%
grade 6 events	26437	27545	24645	25028	31772	83015
	11%	11%	10%	10%	12%	30%
grade 7 events	52760	55073	57241	57918	60387	57169
	22%	22%	24%	23%	23%	21%

2.2 Compared Parameters

Parameter	Planned	Actual	Parameter	Planned	Actual
Instrument	ACIS	ACIS	Obspar format version number	6	6
Detector	ACIS-012367	ACIS-012367	Obspar file type	PREDICTED	ACTUAL
Grating	NONE	NONE	Obspar update status	NONE	UPDATED
Data mode	FAINT	FAINT	On-chip summing requested	N	N
Observation mode	SECONDARY	SECONDARY	Subarray requested	NONE	NONE
Pointing RA	0	248.6122512711357	Alternating exposures requested	N	N
Pointing Dec	0	-21.42621268406443	Primary exposure time	3.2	3.2
Pointing Roll	0.0	260.6445000571808			
SIM focus pos (mm)	-0.782348	-0.6828225247311905			
SIM defocus (mm)	0	0.8505141146731063			
SIM translation stage pos (mm)	-233.592463	250.466033080201			
SIM translation stage offset (mm)	0	-0.01005468664627074			
Observation start time	236493642.14379	236493641.11878			
Observation start date	2005-06-30T04:40:42	2005-06-30T04:40:41			
Observation end time	236514951.894765	236514950.86975			
Observation end date	2005-06-30T10:35:52	2005-06-30T10:35:50			
Read mode	TIMED	TIMED			

2.3 Aspect

2.4 Star Slots

2.5 FID Slots

A Summary

A.1 Status

V&V Scientist	Beth Sundheim
V&V Date (YYYY-MM-DD)	2006.03.13
V&V Edition	1
V&V Disposition and Status	OK
V&V Charge Time	8.27519996

A.2 Comments

Focal plane temperature is elevated throughout entire observation.