

# V&V Reference Report

## L2 ASCDS Version : 7.6.7.1

Observation 59575 - L2 Version 002  
Chandra X-Ray Center

L2 Processing Date : Mar 14 2006

## Contents

<b>1</b>	<b>Front</b>	<b>2</b>
<b>2</b>	<b>OBI</b>	<b>3</b>
2.1	OBI . . . . .	3
2.1.1	Images . . . . .	3
2.1.2	Bias . . . . .	3
2.1.3	Parameters . . . . .	4
2.1.4	Events . . . . .	4
2.2	Compared Parameters . . . . .	5
2.3	Aspect . . . . .	6
2.4	Star Slots . . . . .	8
2.5	FID Slots . . . . .	8
<b>A</b>	<b>Summary</b>	<b>9</b>
A.1	Status . . . . .	9
A.2	Comments . . . . .	9

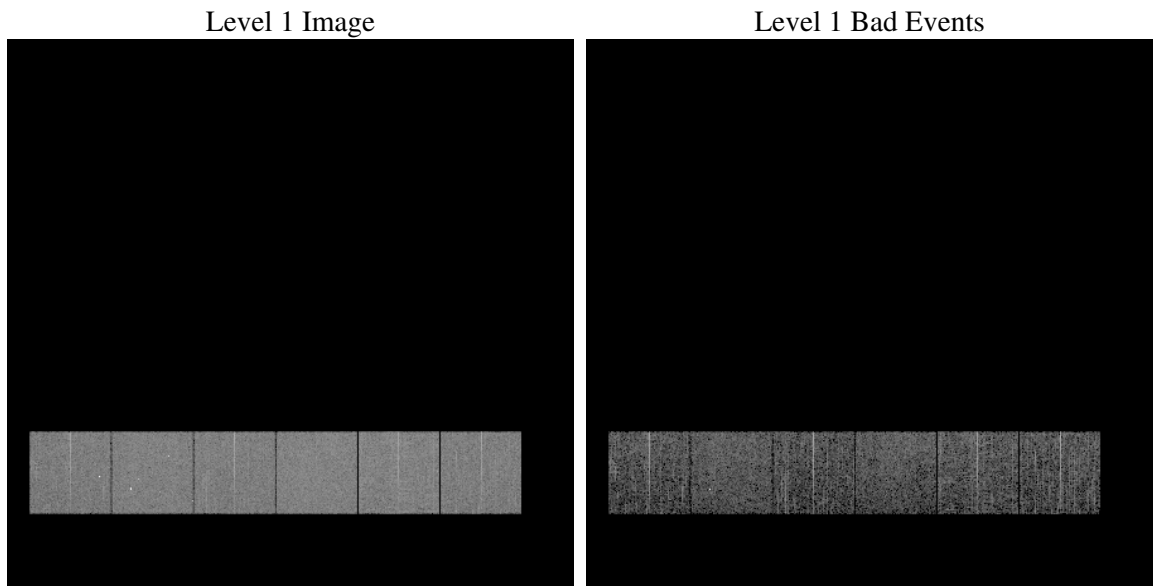
# 1 Front

seq_num	&#160
obs_id	59575
title	ACIS-456789 diagnostics
observer	CHANDRA engineering request/realtime commanding
object	&#160
dtcycle	0
cycle	P
ra_targ	0.0
dec_targ	0.0
ra_nom	257.01018474475
dec_nom	-23.021942095755
roll_nom	265.12957120891
revision	2
ontime	2716.7944449782
livetime	2682.3927578587
ontime4	2496.414139837
ontime5	2716.7999898791
ontime6	2567.7155062258
ontime7	2716.7944449782
ontime8	2642.2576433718
ontime9	2528.7773274183
l2events	356941

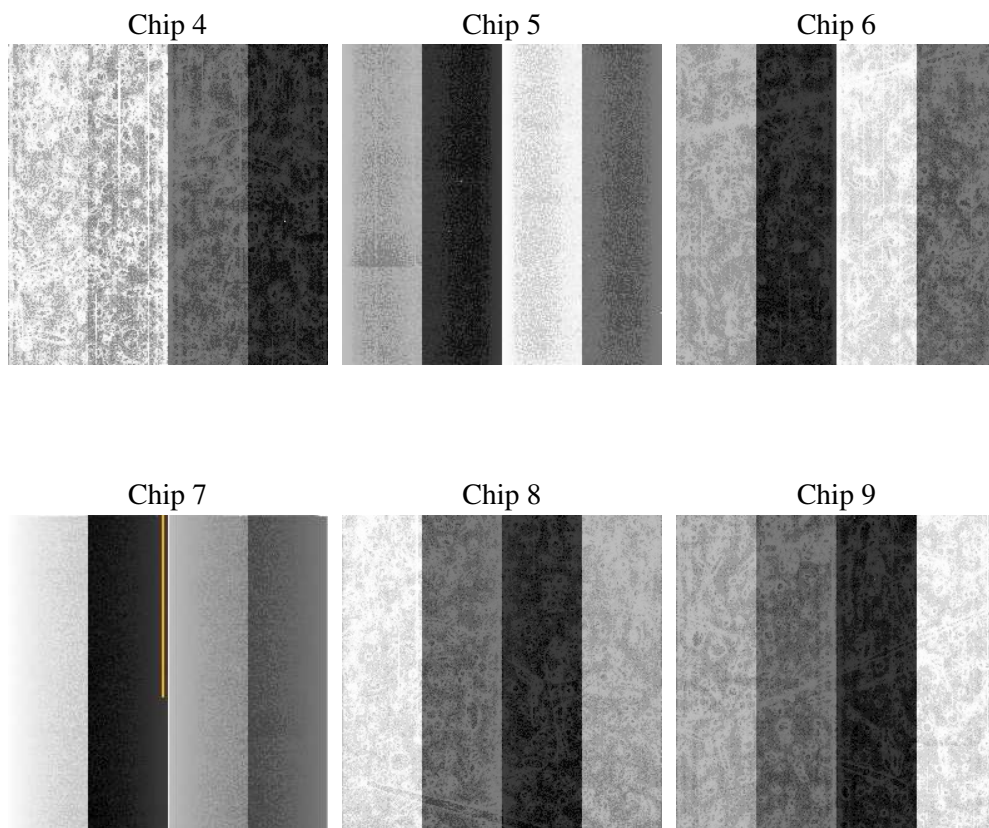
## 2 OBI

### 2.1 OBI

#### 2.1.1 Images



#### 2.1.2 Bias



### 2.1.3 Parameters

obi_num	0
ascdsver	7.6.7.1
caldbver	3.2.1
date	2006-03-14T21:57:03
revision	2

sched_exp_time	0.0
ontime	2719.2007442415
ontime4	2498.8148941994
ontime5	2719.2007442415
ontime6	2570.1162605882
ontime7	2719.2007442415
ontime8	2644.6583977342
ontime9	2531.2246666849
l1events	504970

### 2.1.4 Events

	ccd 4	ccd 5	ccd 6	ccd 7	ccd 8	ccd 9
level 1 events	77840	85552	82355	88993	89747	80483
rejected events	20223	21887	19293	19996	22001	20578
rejected %	25%	25%	23%	22%	24%	25%

	ccd 4	ccd 5	ccd 6	ccd 7	ccd 8	ccd 9
grade 0 events	33245	6958	34204	11778	36229	32634
	42%	8%	41%	13%	40%	40%
grade 1 events	242	43	183	34	210	215
	0%	0%	0%	0%	0%	0%
grade 2 events	9089	29543	10879	20667	11911	10414
	11%	34%	13%	23%	13%	12%
grade 3 events	3982	1963	3997	4891	4557	3835
	5%	2%	4%	5%	5%	4%
grade 4 events	3869	1854	3876	4860	4463	3902
	4%	2%	4%	5%	4%	4%
grade 5 events	1192	2203	1229	2313	1495	1238
	1%	2%	1%	2%	1%	1%
grade 6 events	7494	23429	10172	26890	10670	9191
	9%	27%	12%	30%	11%	11%
grade 7 events	18727	19559	17815	17560	20212	19054
	24%	22%	21%	19%	22%	23%

## 2.2 Compared Parameters

Parameter	Planned	Actual	Parameter	Planned	Actual
Instrument	ACIS	ACIS	Obspar format version number	6	6
Detector	ACIS-456789	ACIS-456789	Obspar file type	PREDICTED	ACTUAL
Grating	NONE	NONE	Obspar update status	NONE	UPDATED
Data mode	FAINT	FAINT	On-chip summing requested	N	N
Observation mode	SECONDARY	SECONDARY	Subarray requested	NONE	NONE
Pointing RA	0	257.0101847447502	Alternating exposures requested	N	N
Pointing Dec	0	-23.02194209575522	Primary exposure time	3.2	3.2
Pointing Roll	0.0	265.1295712089137			
SIM focus pos (mm)	-0.684267	-0.6828225247311905			
SIM defocus (mm)	0	0.8505141146731063			
SIM translation stage pos (mm)	-190.132523	250.466033080201			
SIM translation stage offset (mm)	0	-0.01005468664627074			
Observation start time	237366364.083706	237366363.0587			
Observation start date	2005-07-10T07:06:04	2005-07-10T07:06:03			
Observation end time	237381950.234419	237381949.20941			
Observation end date	2005-07-10T11:25:50	2005-07-10T11:25:49			
Read mode	TIMED	TIMED			

## 2.3 Aspect



## **2.4 Star Slots**

## **2.5 FID Slots**



## A Summary

### A.1 Status

V&V Scientist	Jen Lauer
V&V Date (YYYY-MM-DD)	2006.03.15
V&V Edition	1
V&V Disposition and Status	OK
V&V Charge Time	2.71679444

### A.2 Comments