

# V&V Reference Report

## L2 ASCDS Version : 7.6.7.1

Observation 59552 - L2 Version 002  
Chandra X-Ray Center

L2 Processing Date : Mar 14 2006

## Contents

<b>1</b>	<b>Front</b>	<b>2</b>
<b>2</b>	<b>OBI</b>	<b>3</b>
2.1	OBI . . . . .	3
2.1.1	Images . . . . .	3
2.1.2	Bias . . . . .	3
2.1.3	Parameters . . . . .	4
2.1.4	Events . . . . .	4
2.2	Compared Parameters . . . . .	5
2.3	Aspect . . . . .	6
2.4	Star Slots . . . . .	8
2.5	FID Slots . . . . .	8
<b>A</b>	<b>Summary</b>	<b>9</b>
A.1	Status . . . . .	9
A.2	Comments . . . . .	9

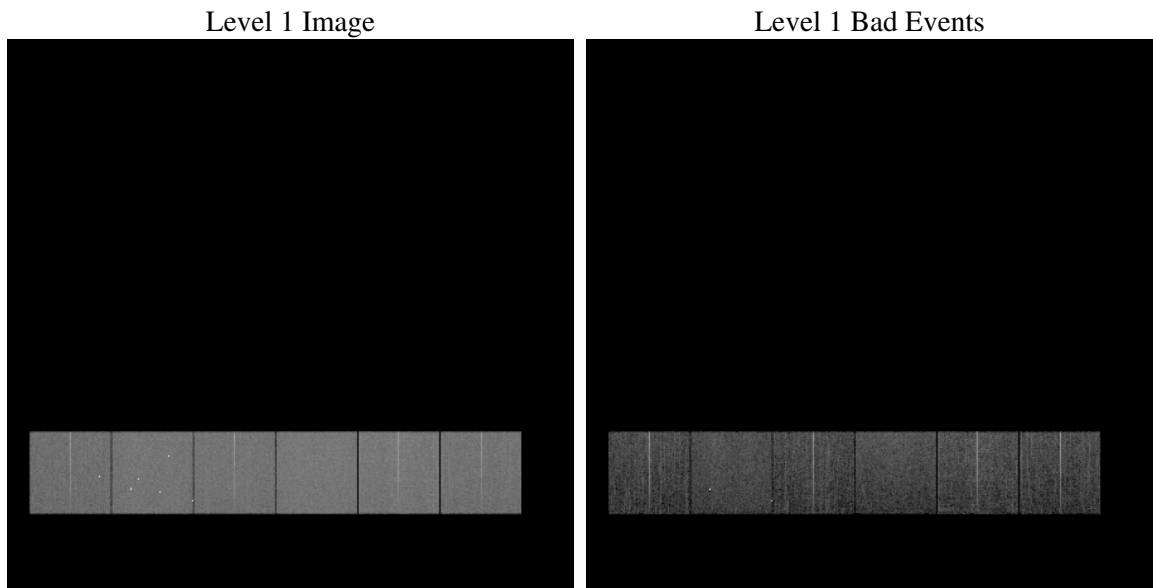
# 1 Front

seq_num	&#160
obs_id	59552
title	ACIS-456789 diagnostics
observer	CHANDRA engineering request/realtime commanding
object	&#160
dtcycle	0
cycle	P
ra_targ	0.0
dec_targ	0.0
ra_nom	262.21726974343
dec_nom	-23.023623105726
roll_nom	266.50017248984
revision	2
ontime	8278.1949166059
livetime	8173.3714280413
ontime4	7137.4937936366
ontime5	8278.2359566092
ontime6	7801.853273809
ontime7	8278.1949166059
ontime8	8070.9365276098
ontime9	7655.8862792253
l2events	1047523

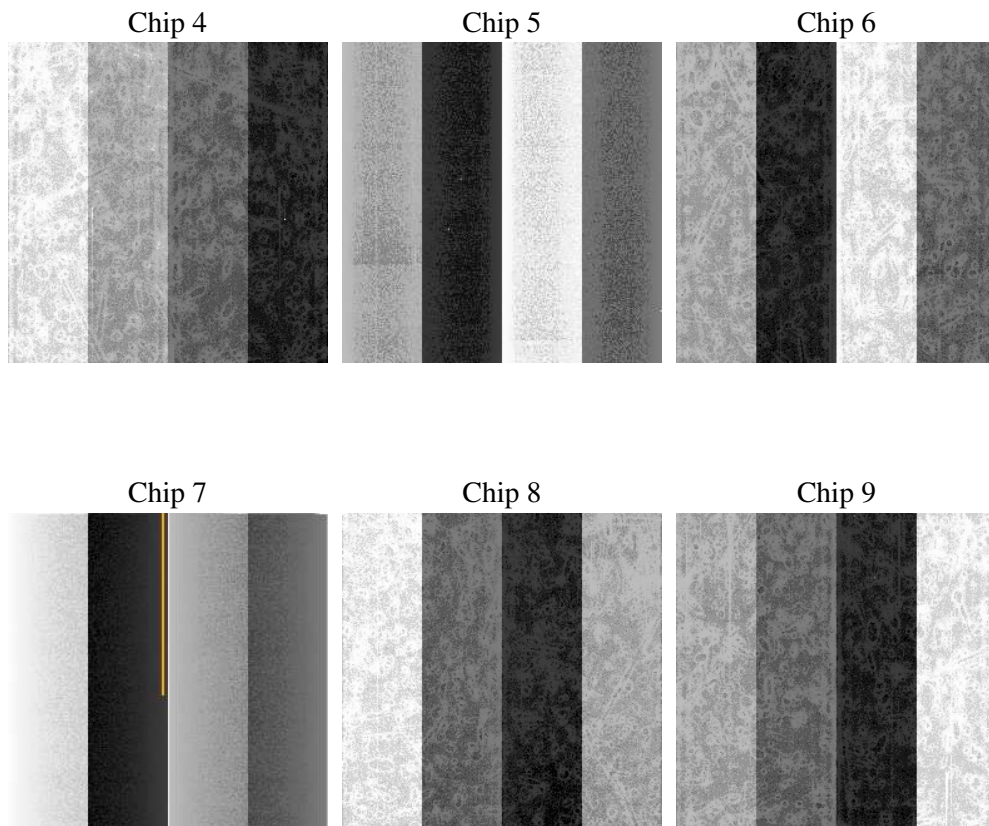
## 2 OBI

### 2.1 OBI

#### 2.1.1 Images



#### 2.1.2 Bias



### 2.1.3 Parameters

obi_num	1
ascdsver	7.6.7.1
caldsver	3.2.1
date	2006-03-14T23:08:29
revision	2

sched_exp_time	0.0
ontime	8280.773698777
ontime4	7139.9494557977
ontime5	8280.773698777
ontime6	7804.3499759734
ontime7	8280.773698777
ontime8	8073.3511497974
ontime9	7658.5061013997
l1events	1487273

### 2.1.4 Events

	ccd 4	ccd 5	ccd 6	ccd 7	ccd 8	ccd 9
level 1 events	217126	260352	244353	264509	266814	234119
rejected events	56963	65750	57715	60161	65679	56546
rejected %	26%	25%	23%	22%	24%	24%

	ccd 4	ccd 5	ccd 6	ccd 7	ccd 8	ccd 9
grade 0 events	94224	24546	101510	32916	108952	97889
	43%	9%	41%	12%	40%	41%
grade 1 events	731	493	471	96	556	546
	0%	0%	0%	0%	0%	0%
grade 2 events	24480	87640	32564	63131	35528	30228
	11%	33%	13%	23%	13%	12%
grade 3 events	10650	5673	11362	13897	13116	11431
	4%	2%	4%	5%	4%	4%
grade 4 events	10433	5203	11503	13770	12997	11277
	4%	1%	4%	5%	4%	4%
grade 5 events	3000	6807	3532	6690	4443	3796
	1%	2%	1%	2%	1%	1%
grade 6 events	20446	71612	29787	80728	30609	26812
	9%	27%	12%	30%	11%	11%
grade 7 events	53162	58378	53624	53281	60613	52140
	24%	22%	21%	20%	22%	22%

## 2.2 Compared Parameters

Parameter	Planned	Actual	Parameter	Planned	Actual
Instrument	ACIS	ACIS	Obspar format version number	6	6
Detector	ACIS-456789	ACIS-456789	Obspar file type	PREDICTED	ACTUAL
Grating	NONE	NONE	Obspar update status	NONE	UPDATED
Data mode	FAINT	FAINT	On-chip summing requested	N	N
Observation mode	SECONDARY	SECONDARY	Subarray requested	NONE	NONE
Pointing RA	0	262.2172697434301	Alternating exposures requested	N	N
Pointing Dec	0	-23.02362310572575	Primary exposure time	3.2	3.2
Pointing Roll	0.0	266.5001724898448			
SIM focus pos (mm)	-0.684267	-0.7809083437167272			
SIM defocus (mm)	0	0.7524282956875696			
SIM translation stage pos (mm)	-190.132523	250.466033080201			
SIM translation stage offset (mm)	0	-0.01005468664627074			
Observation start time	237631832.94585	237631831.92084			
Observation start date	2005-07-13T08:50:33	2005-07-13T08:50:31			
Observation end time	237655207.046921	237655206.02191			
Observation end date	2005-07-13T15:20:07	2005-07-13T15:20:06			
Read mode	TIMED	TIMED			

## 2.3 Aspect



## **2.4 Star Slots**

## **2.5 FID Slots**



## A Summary

### A.1 Status

V&V Scientist	Jen Lauer
V&V Date (YYYY-MM-DD)	2006.03.15
V&V Edition	1
V&V Disposition and Status	OK
V&V Charge Time	8.27819491

### A.2 Comments

The ACIS focal plane temperature is above calibration limits for the entire observation.