

# V&V Reference Report

## L2 ASCDS Version : 7.6.7.1

Observation 59545 - L2 Version 002  
Chandra X-Ray Center

L2 Processing Date : Mar 14 2006

## Contents

<b>1</b>	<b>Front</b>	<b>2</b>
<b>2</b>	<b>OBI</b>	<b>3</b>
2.1	OBI . . . . .	3
2.1.1	Images . . . . .	3
2.1.2	Bias . . . . .	3
2.1.3	Parameters . . . . .	4
2.1.4	Events . . . . .	4
2.2	Compared Parameters . . . . .	5
2.3	Aspect . . . . .	6
2.4	Star Slots . . . . .	8
2.5	FID Slots . . . . .	8
<b>A</b>	<b>Summary</b>	<b>9</b>
A.1	Status . . . . .	9
A.2	Comments . . . . .	9

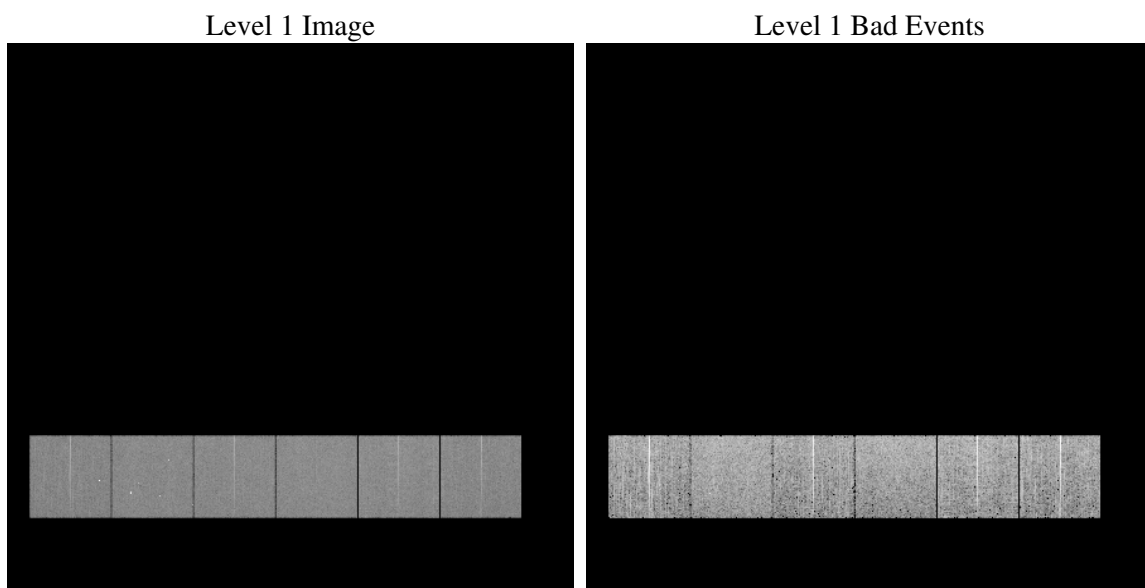
# 1 Front

seq_num	&#160
obs_id	59545
title	ACIS-456789 diagnostics
observer	CHANDRA engineering request/realtime commanding
object	&#160
dtcycle	0
cycle	P
ra_targ	0.0
dec_targ	0.0
ra_nom	75.497825653565
dec_nom	55.528563705601
roll_nom	59.580402900682
revision	2
ontime	5881.5999780893
livetime	5807.1236176924
ontime4	5476.4800204933
ontime5	5881.5999780893
ontime6	5777.889288336
ontime7	5881.5999780893
ontime8	5829.7446033657
ontime9	5661.2145284712
l2events	773853

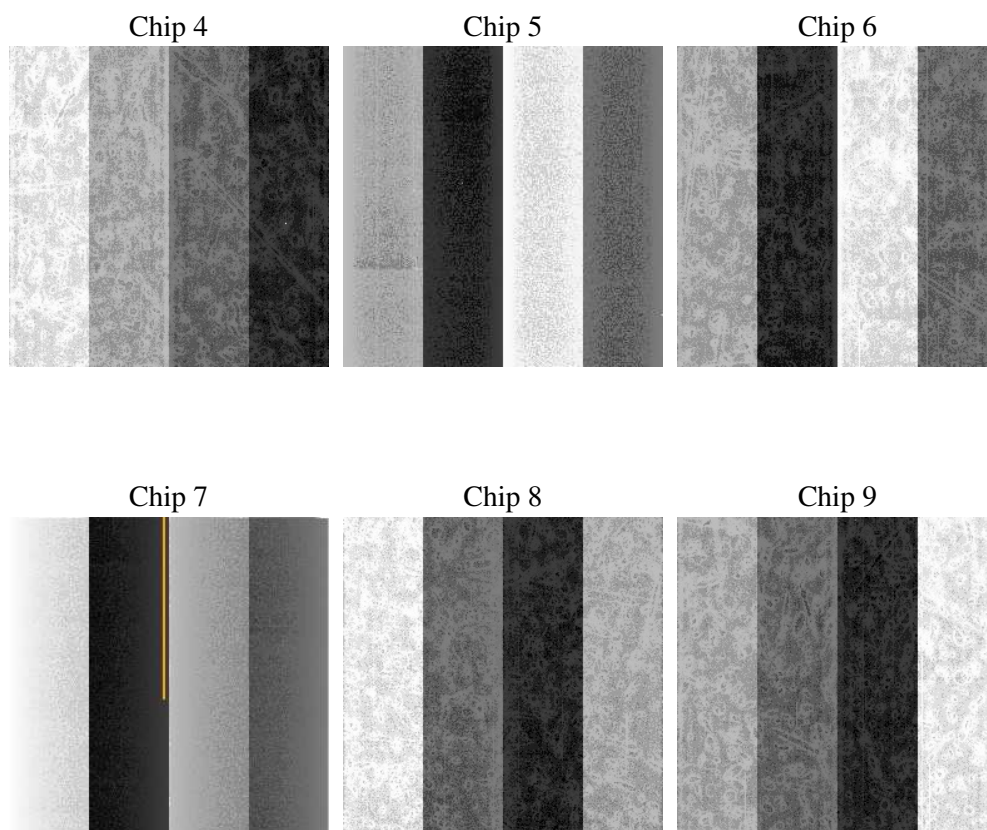
## 2 OBI

### 2.1 OBI

#### 2.1.1 Images



#### 2.1.2 Bias



### 2.1.3 Parameters

obi_num	1
ascdsver	7.6.7.1
caldsver	3.2.1
date	2006-03-14T23:39:05
revision	2

sched_exp_time	0.0
ontime	5882.4145691693
ontime4	5477.2946115732
ontime5	5882.4145691693
ontime6	5778.703879416
ontime7	5882.4145691693
ontime8	5830.5591944456
ontime9	5662.0291195512
l1events	1061647

### 2.1.4 Events

	ccd 4	ccd 5	ccd 6	ccd 7	ccd 8	ccd 9
level 1 events	163632	175073	178262	185121	188926	170633
rejected events	39040	40626	36954	38301	42358	38639
rejected %	23%	23%	20%	20%	22%	22%

	ccd 4	ccd 5	ccd 6	ccd 7	ccd 8	ccd 9
grade 0 events	72342	15753	76752	25227	79005	72596
	44%	8%	43%	13%	41%	42%
grade 1 events	521	142	325	80	389	421
	0%	0%	0%	0%	0%	0%
grade 2 events	19673	62075	24345	44425	25809	22760
	12%	35%	13%	23%	13%	13%
grade 3 events	8318	4179	8933	10532	9628	8578
	5%	2%	5%	5%	5%	5%
grade 4 events	8176	4145	8842	10512	9603	8274
	4%	2%	4%	5%	5%	4%
grade 5 events	2204	3993	2515	4540	2945	2526
	1%	2%	1%	2%	1%	1%
grade 6 events	16083	48295	22436	56124	22523	19786
	9%	27%	12%	30%	11%	11%
grade 7 events	36315	36491	34114	33681	39024	35692
	22%	20%	19%	18%	20%	20%

## 2.2 Compared Parameters

Parameter	Planned	Actual	Parameter	Planned	Actual
Instrument	ACIS	ACIS	Obspar format version number	6	6
Detector	ACIS-456789	ACIS-456789	Obspar file type	PREDICTED	ACTUAL
Grating	NONE	NONE	Obspar update status	NONE	UPDATED
Data mode	FAINT	FAINT	On-chip summing requested	N	N
Observation mode	SECONDARY	SECONDARY	Subarray requested	NONE	NONE
Pointing RA	0	75.49782565356466	Alternating exposures requested	N	N
Pointing Dec	0	55.52856370560068	Primary exposure time	3.2	3.2
Pointing Roll	0.0	59.5804029006821			
SIM focus pos (mm)	-0.684267	-0.7809083437167272			
SIM defocus (mm)	0	0.7524282956875696			
SIM translation stage pos (mm)	-190.132523	250.466033080201			
SIM translation stage offset (mm)	0	-0.01005468664627074			
Observation start time	238048245.36488	238048244.3399			
Observation start date	2005-07-18T04:30:45	2005-07-18T04:30:44			
Observation end time	238058210.415335	238058209.39036			
Observation end date	2005-07-18T07:16:50	2005-07-18T07:16:49			
Read mode	TIMED	TIMED			

## 2.3 Aspect



## **2.4 Star Slots**

## **2.5 FID Slots**



## A Summary

### A.1 Status

V&V Scientist	Jen Lauer
V&V Date (YYYY-MM-DD)	2006.03.15
V&V Edition	1
V&V Disposition and Status	OK
V&V Charge Time	5.88159997

### A.2 Comments