

V&V Reference Report

L2 ASCDS Version : 8.5.1.1

Observation 59537 - L2 Version 3
Chandra X-Ray Center

L2 Processing Date : Dec 26 2012

Contents

1	Front	2
2	OBI	3
2.1	OBI	3
2.1.1	Images	3
2.1.2	Bias	3
2.1.3	Parameters	4
2.1.4	Events	4
2.2	Compared Parameters	5
2.3	Star Slots	6
2.4	FID Slots	6
A	Summary	7
A.1	Status	7
A.2	Comments	7

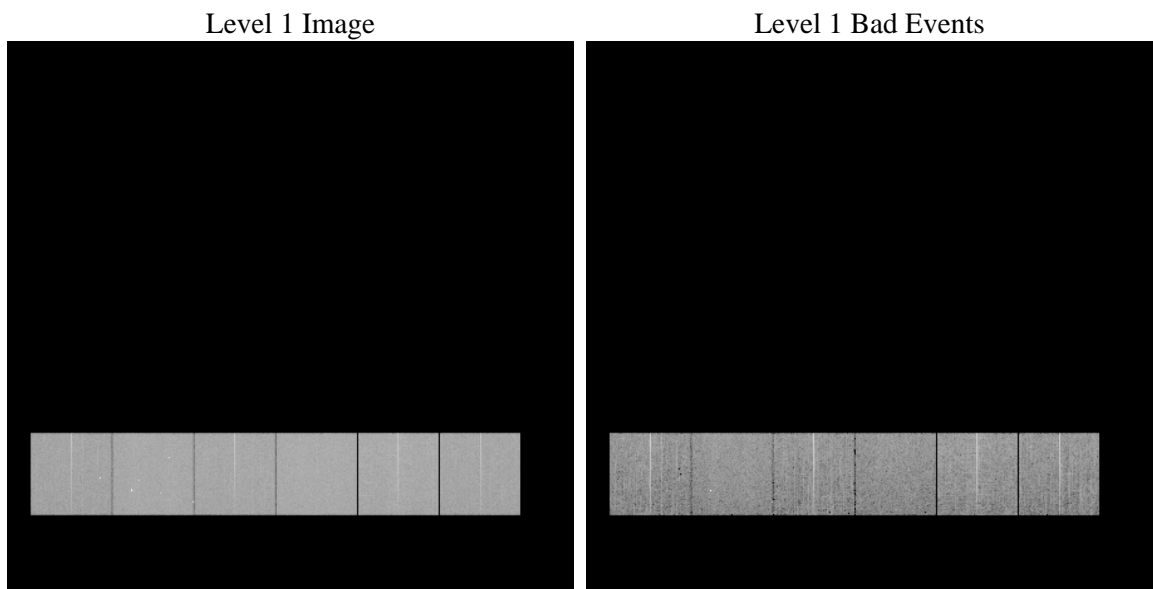
1 Front

seq_num	 	Sequence number
obs_id	59537	Observation id
title	ACIS-456789 diagnostics	Proposal title
observer	CHANDRA engineering request/realtime commanding	Principal investig
object	 	Source name
dtcycle	0	
cycle	P	events from which exps? Prim/Second/Both
ra_targ	0.0	Observer's specified target RA [deg]
dec_targ	0.0	Observer's specified target Dec [deg]
ra_nom	286.64166967521	Nominal RA [deg]
dec_nom	-46.797711582514	Nominal Dec [deg]
roll_nom	331.72645927107	Nominal Roll [deg]
revision	3	Processing version of data
ontime	8275.1999691725	Sum of GTIs [s]
livetime	8170.4144044356	Livetime [s]
ontime4	7153.8217061162	Sum of GTIs [s]
ontime5	8275.1999691725	Sum of GTIs [s]
ontime6	7724.2335194349	Sum of GTIs [s]
ontime7	8275.1999691725	Sum of GTIs [s]
ontime8	7915.4515755177	Sum of GTIs [s]
ontime9	7481.1604161561	Sum of GTIs [s]
l2events	1054058	Number of level 2 events

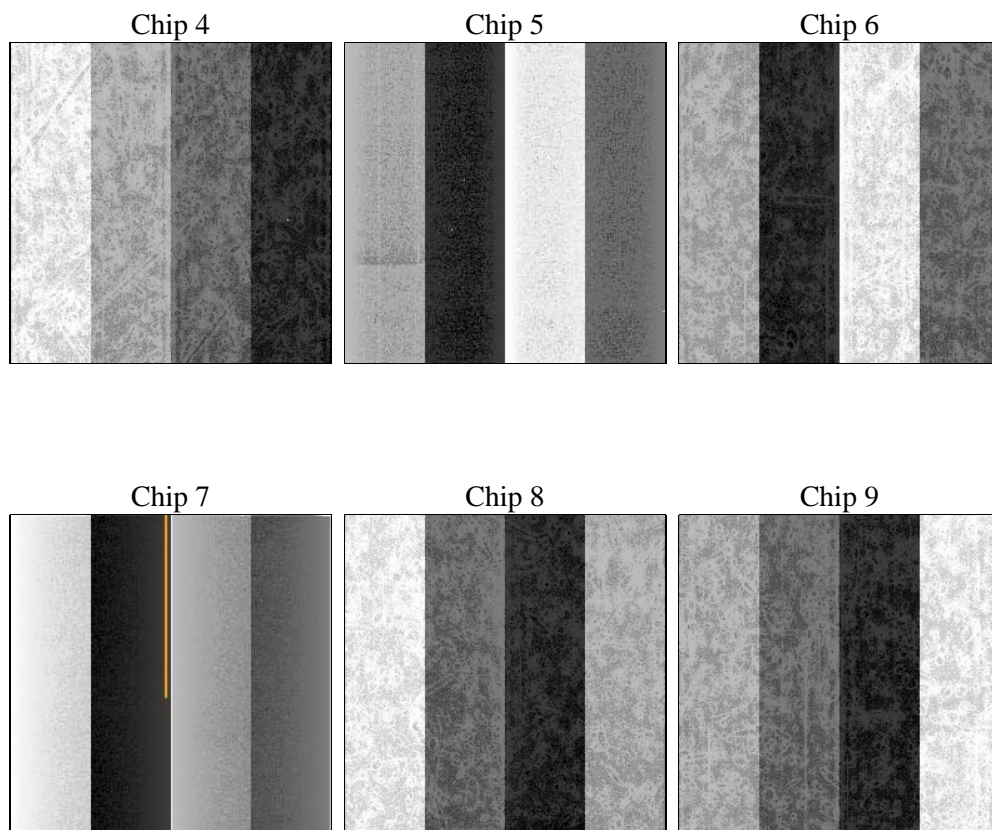
2 OBI

2.1 OBI

2.1.1 Images



2.1.2 Bias



2.1.3 Parameters

obi_num	0	Obi number	sched_exp_time	0.0	[s] Scheduled observation exposure time
ascdsver	8.5.1.1	Processing system revision	ontime	8275.1999691725	Sum of GTIs [s]
caldbver	4.5.5	 	ontime4	7153.8217061162	Sum of GTIs [s]
date	2012-12-26T15:57:18	Date and time of file creation	ontime5	8275.1999691725	Sum of GTIs [s]
revision	3	Processing version of data	ontime6	7724.2335194349	Sum of GTIs [s]
			ontime7	8275.1999691725	Sum of GTIs [s]
			ontime8	7915.4515755177	Sum of GTIs [s]
			ontime9	7481.1604161561	Sum of GTIs [s]
			l1events	1487407	Number of level 1 events

2.1.4 Events

	ccd 4	ccd 5	ccd 6	ccd 7	ccd 8	ccd 9		ccd 4	ccd 5	ccd 6	ccd 7	ccd 8	ccd 9
level 1 events	218537	257440	245620	269502	265391	230917	grade 0 events	93095	37559	99906	50533	105957	94884
rejected events	59479	61189	61185	53798	68269	59438		42%	14%	40%	18%	39%	41%
rejected %	27%	23%	24%	19%	25%	25%	grade 1 events	735	225	512	146	656	569
								0%	0%	0%	0%	0%	0%
							grade 2 events	24509	73751	32201	47693	34765	29009
								11%	28%	13%	17%	13%	12%
							grade 3 events	10830	10476	11456	21017	13032	11107
								4%	4%	4%	7%	4%	4%
							grade 4 events	10461	10300	11409	21144	13062	10853
								4%	4%	4%	7%	4%	4%
							grade 5 events	3327	9027	3703	9337	4733	3852
								1%	3%	1%	3%	1%	1%
							grade 6 events	20163	64165	29463	75317	30306	25626
								9%	24%	11%	27%	11%	11%
							grade 7 events	55417	51937	56970	44315	62880	55017
								25%	20%	23%	16%	23%	23%

2.2 Compared Parameters

Parameter	Planned	Actual	Parameter	Planned	Actual
Instrument	ACIS	ACIS	Obspar format version number	7	7
Detector	ACIS-456789	ACIS-456789	Obspar file type	PREDICTED	ACTUAL
Grating	NONE	NONE	Obspar update status	NONE	UPDATED
Data mode	FAINT	FAINT	On-chip summing requested	N	N
Observation mode	SECONDARY	SECONDARY	Subarray requested	NONE	NONE
[deg] Pointing RA	0	286.6416696752053	Alternating exposures requested	N	N
[deg] Pointing Dec	0	-46.79771158251431	[s] Primary exposure time	3.2	3.2
[deg] Pointing Roll	0.0	331.7264592710727			
[mm] SIM focus pos	-0.684267	-0.6828225247311905			
[mm] SIM defocus	0	0.8505141146731063			
[mm] SIM translation stage pos	-190.132523	250.466033080201			
[mm] SIM translation stage offset	0	-0.01005468664627074			
[s] Observation start time (MET)	238318662.927281	238318661.90229			
Observation start date	2005-07-21T07:37:43	2005-07-21T07:37:41			
[s] Observation end time (MET)	238341122.728309	238341121.70331			
Observation end date	2005-07-21T13:52:03	2005-07-21T13:52:01			
Read mode	TIMED	TIMED			

2.3 Star Slots

2.4 FID Slots

A Summary

A.1 Status

V&V Scientist	Jen Lauer
V&V Date (YYYY-MM-DD)	2013.01.23
V&V Edition	1
V&V Disposition and Status	OK
V&V Charge Time	8.2751999691725

A.2 Comments