

# V&V Reference Report

## L2 ASCDS Version : 7.6.7.1

Observation 59514 - L2 Version 002  
Chandra X-Ray Center

L2 Processing Date : Mar 19 2006

## Contents

<b>1</b>	<b>Front</b>	<b>2</b>
<b>2</b>	<b>OBI</b>	<b>3</b>
2.1	OBI . . . . .	3
2.1.1	Images . . . . .	3
2.1.2	Bias . . . . .	3
2.1.3	Parameters . . . . .	4
2.1.4	Events . . . . .	4
2.2	Compared Parameters . . . . .	5
2.3	Aspect . . . . .	6
2.4	Star Slots . . . . .	8
2.5	FID Slots . . . . .	8
<b>A</b>	<b>Summary</b>	<b>9</b>
A.1	Status . . . . .	9
A.2	Comments . . . . .	9

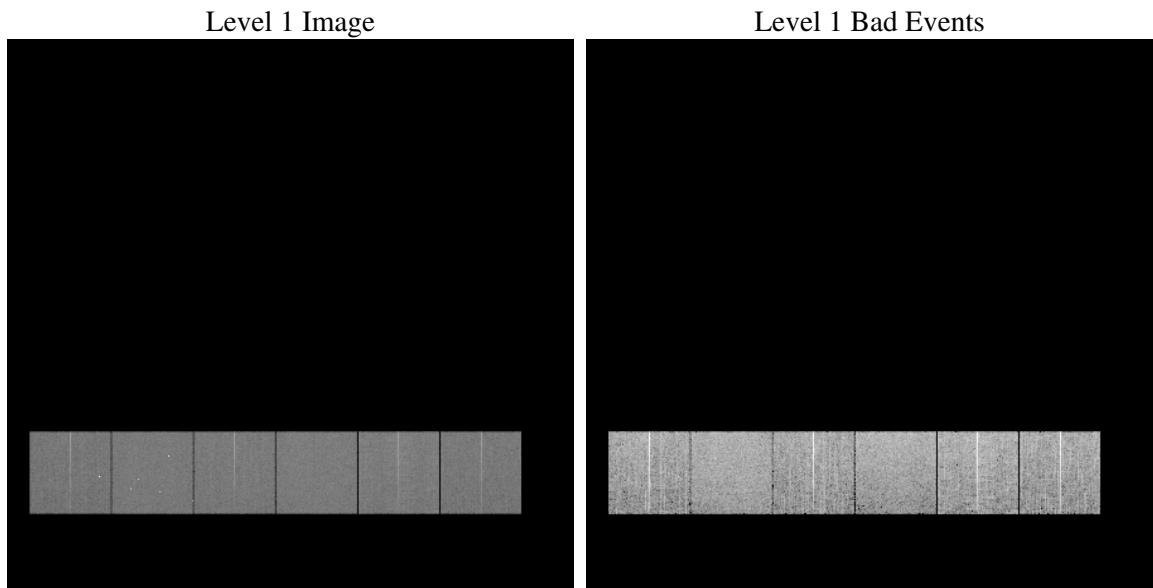
# 1 Front

seq_num	&#160
obs_id	59514
title	ACIS-456789 diagnostics
observer	CHANDRA engineering request/realtime commanding
object	&#160
dtcycle	0
cycle	P
ra_targ	0.0
dec_targ	0.0
ra_nom	200.01782731538
dec_nom	30.475898424951
roll_nom	269.55172328382
revision	2
ontime	7798.3999709487
livetime	7699.6519348838
ontime4	7338.183768034
ontime5	7798.3999709487
ontime6	7642.8338964581
ontime7	7798.3999709487
ontime8	7788.6770601571
ontime9	7513.1954145133
l2events	1007023

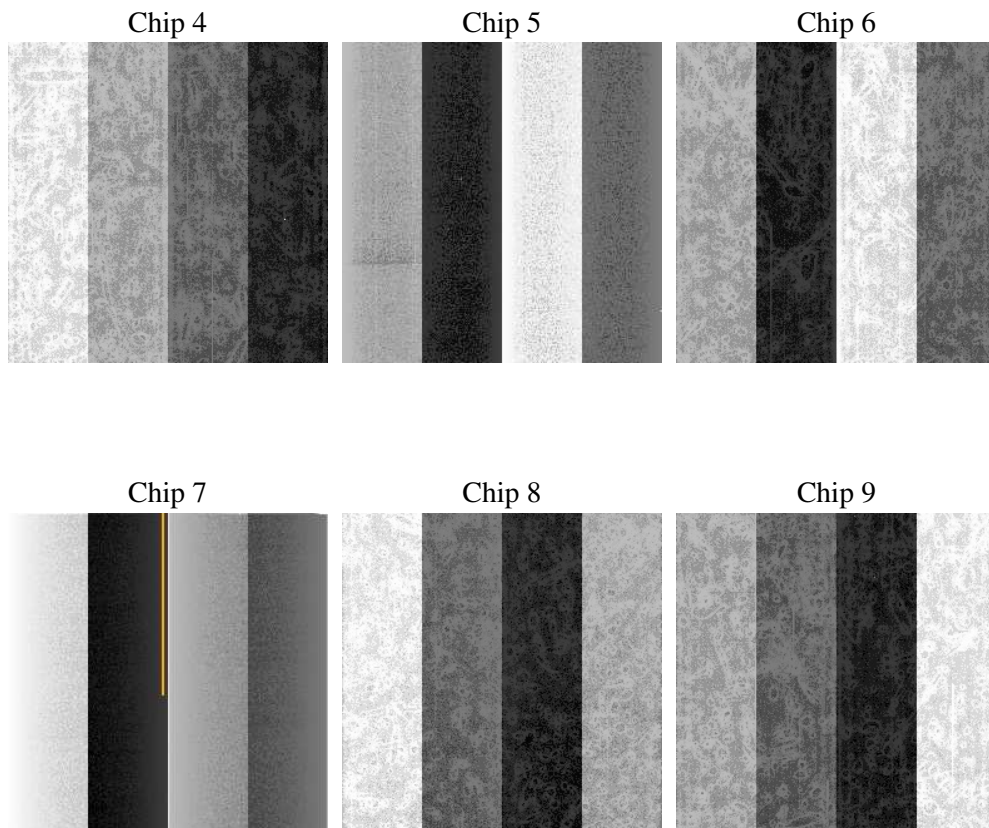
## 2 OBI

### 2.1 OBI

#### 2.1.1 Images



#### 2.1.2 Bias



### 2.1.3 Parameters

obi_num	0
ascdsver	7.6.7.1
caldbver	3.2.1
date	2006-03-19T14:38:20
revision	2

sched_exp_time	0.0
ontime	7801.0863574147
ontime4	7340.8701545
ontime5	7801.0863574147
ontime6	7645.5202829242
ontime7	7801.0863574147
ontime8	7791.3634466231
ontime9	7515.8818009794
l1events	1400083

### 2.1.4 Events

	ccd 4	ccd 5	ccd 6	ccd 7	ccd 8	ccd 9
level 1 events	214665	232124	233258	243324	251782	224930
rejected events	51573	54989	51694	52611	59581	52727
rejected %	24%	23%	22%	21%	23%	23%

	ccd 4	ccd 5	ccd 6	ccd 7	ccd 8	ccd 9
grade 0 events	95138	21542	98302	32819	103688	94641
	44%	9%	42%	13%	41%	42%
grade 1 events	662	143	434	108	510	533
	0%	0%	0%	0%	0%	0%
grade 2 events	25810	80997	31698	57465	33806	29765
	12%	34%	13%	23%	13%	13%
grade 3 events	10760	5551	11392	13703	12675	10931
	5%	2%	4%	5%	5%	4%
grade 4 events	10813	5482	11508	13508	12666	11081
	5%	2%	4%	5%	5%	4%
grade 5 events	3109	5332	3481	6211	3995	3574
	1%	2%	1%	2%	1%	1%
grade 6 events	20646	63651	28744	73294	29445	25849
	9%	27%	12%	30%	11%	11%
grade 7 events	47727	49426	47699	46216	54997	48556
	22%	21%	20%	18%	21%	21%

## 2.2 Compared Parameters

Parameter	Planned	Actual	Parameter	Planned	Actual
Instrument	ACIS	ACIS	Obspar format version number	6	6
Detector	ACIS-456789	ACIS-456789	Obspar file type	PREDICTED	ACTUAL
Grating	NONE	NONE	Obspar update status	NONE	UPDATED
Data mode	FAINT	FAINT	On-chip summing requested	N	N
Observation mode	SECONDARY	SECONDARY	Subarray requested	NONE	NONE
Pointing RA	0	200.0178273153774	Alternating exposures requested	N	N
Pointing Dec	0	30.47589842495083	Primary exposure time	3.2	3.2
Pointing Roll	0.0	269.5517232838167			
SIM focus pos (mm)	-0.684267	-1.038866356238299			
SIM defocus (mm)	0	0.4944702831659975			
SIM translation stage pos (mm)	-190.132523	250.466033080201			
SIM translation stage offset (mm)	0	-0.01005468664627074			
Observation start time	239879350.548744	239879349.52375			
Observation start date	2005-08-08T09:09:11	2005-08-08T09:09:09			
Observation end time	239894186.399424	239894185.37443			
Observation end date	2005-08-08T13:16:26	2005-08-08T13:16:25			
Read mode	TIMED	TIMED			

## 2.3 Aspect



## **2.4 Star Slots**

## **2.5 FID Slots**



## A Summary

### A.1 Status

V&V Scientist	Doug Morgan
V&V Date (YYYY-MM-DD)	2006.03.20
V&V Edition	1
V&V Disposition and Status	OK
V&V Charge Time	7.79839997

### A.2 Comments