

V&V Reference Report

L2 ASCDS Version : 8.5.1.1

Observation 59508 - L2 Version 3
Chandra X-Ray Center

L2 Processing Date : Dec 27 2012

Contents

1	Front	2
2	OBI	3
2.1	OBI	3
2.1.1	Images	3
2.1.2	Bias	3
2.1.3	Parameters	4
2.1.4	Events	4
2.2	Compared Parameters	5
2.3	Star Slots	6
2.4	FID Slots	6
A	Summary	7
A.1	Status	7
A.2	Comments	7

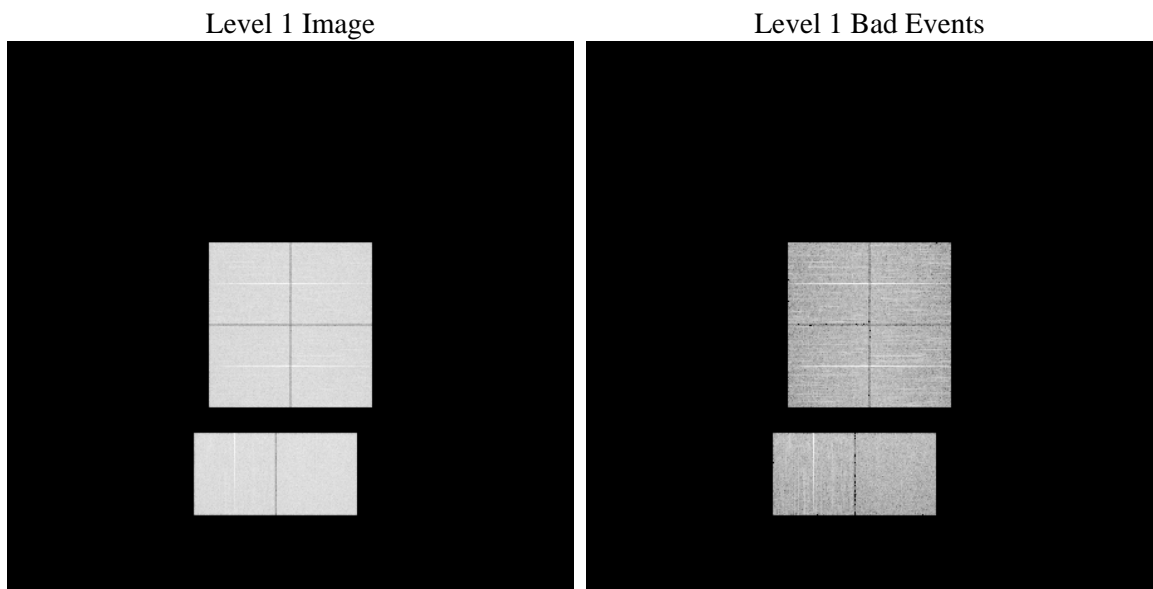
1 Front

seq_num	 	Sequence number
obs_id	59508	Observation id
title	ACIS-012367 diagnostics	Proposal title
observer	CHANDRA engineering request/realtime commanding	Principal investig
object	 	Source name
dtcycle	0	
cycle	P	events from which exps? Prim/Second/Both
ra_targ	0.0	Observer's specified target RA [deg]
dec_targ	0.0	Observer's specified target Dec [deg]
ra_nom	273.01983437603	Nominal RA [deg]
dec_nom	-20.023592440274	Nominal Dec [deg]
roll_nom	267.95919425041	Nominal Roll [deg]
revision	3	Processing version of data
ontime	8220.5387494266	Sum of GTIs [s]
livetime	8116.4453379672	Livetime [s]
ontime0	8139.4732619226	Sum of GTIs [s]
ontime1	8217.2156891525	Sum of GTIs [s]
ontime2	7944.9322250485	Sum of GTIs [s]
ontime3	8094.1815977097	Sum of GTIs [s]
ontime6	8220.3745894432	Sum of GTIs [s]
ontime7	8220.5387494266	Sum of GTIs [s]
l2events	1089054	Number of level 2 events

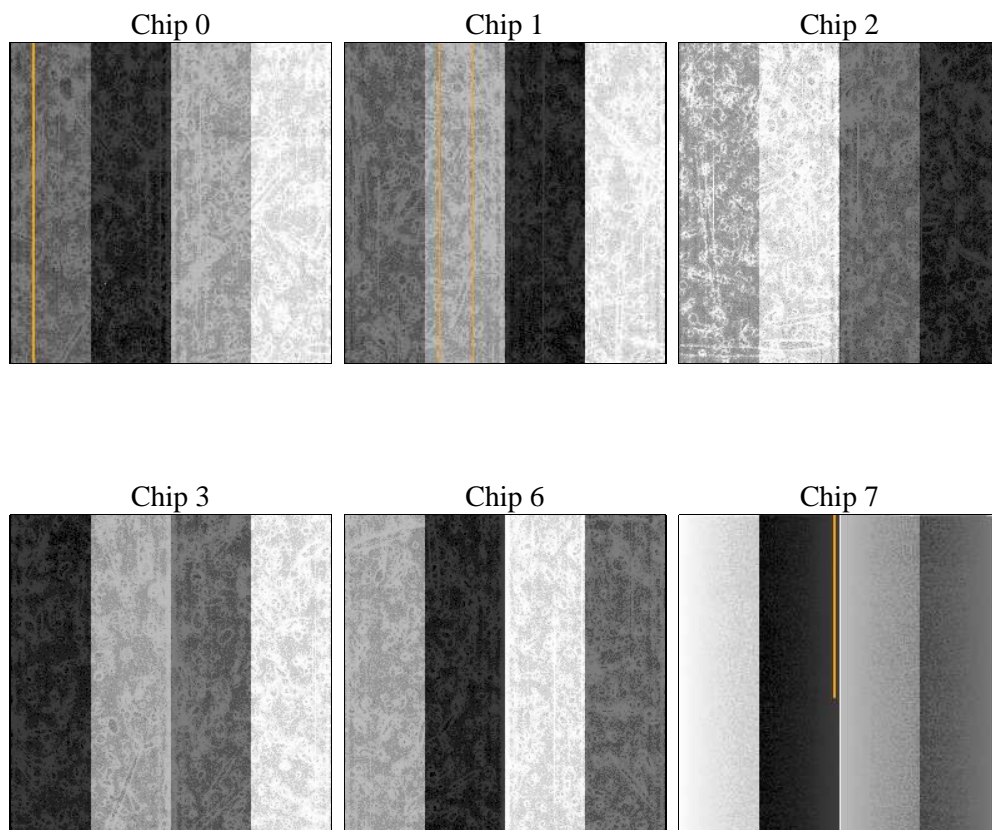
2 OBI

2.1 OBI

2.1.1 Images



2.1.2 Bias



2.1.3 Parameters

obi_num	0	Obi number	sched_exp_time	0.0	[s] Scheduled observation exposure time
ascdsver	8.5.1.1	Processing system revision	ontime	8220.5387494266	Sum of GTIs [s]
caldsver	4.5.5	 	ontime0	8139.4732619226	Sum of GTIs [s]
date	2012-12-27T09:03:03	Date and time of file creation	ontime1	8217.2156891525	Sum of GTIs [s]
revision	3	Processing version of data	ontime2	7944.9322250485	Sum of GTIs [s]
			ontime3	8094.1815977097	Sum of GTIs [s]
			ontime6	8220.3745894432	Sum of GTIs [s]
			ontime7	8220.5387494266	Sum of GTIs [s]
			l1events	1481705	Number of level 1 events

2.1.4 Events

	ccd 0	ccd 1	ccd 2	ccd 3	ccd 6	ccd 7		ccd 0	ccd 1	ccd 2	ccd 3	ccd 6	ccd 7
level 1 events	239791	243132	237639	245987	253699	261457	grade 0 events	101992	102891	102430	105214	106390	49877
rejected events	55560	55797	55611	59696	58443	51129		42%	42%	43%	42%	41%	19%
rejected %	23%	22%	23%	24%	23%	19%	grade 1 events	600	512	638	640	514	166
								0%	0%	0%	0%	0%	0%
							grade 2 events	32342	33978	30831	31960	34026	46621
								13%	13%	12%	12%	13%	17%
							grade 3 events	12198	12186	12129	12166	12206	20771
								5%	5%	5%	4%	4%	7%
							grade 4 events	11973	11906	11989	12244	12319	20966
								4%	4%	5%	4%	4%	8%
							grade 5 events	3421	3403	3144	3663	3654	8643
								1%	1%	1%	1%	1%	3%
							grade 6 events	27254	27940	26180	26200	31935	73819
								11%	11%	11%	10%	12%	28%
							grade 7 events	50011	50316	50298	53900	52655	40594
								20%	20%	21%	21%	20%	15%

2.2 Compared Parameters

Parameter	Planned	Actual	Parameter	Planned	Actual
Instrument	ACIS	ACIS	Obspar format version number	7	7
Detector	ACIS-012367	ACIS-012367	Obspar file type	PREDICTED	ACTUAL
Grating	NONE	NONE	Obspar update status	NONE	UPDATED
Data mode	FAINT	FAINT	On-chip summing requested	N	N
Observation mode	SECONDARY	SECONDARY	Subarray requested	NONE	NONE
[deg] Pointing RA	0	273.0198343760272	Alternating exposures requested	N	N
[deg] Pointing Dec	0	-20.02359244027394	[s] Primary exposure time	3.2	3.2
[deg] Pointing Roll	0.0	267.9591942504136			
[mm] SIM focus pos	-0.782348	-0.6828225247311905			
[mm] SIM defocus	0	0.8505141146731063			
[mm] SIM translation stage pos	-233.592463	250.466033080201			
[mm] SIM translation stage offset	0	-0.01005468664627074			
[s] Observation start time (MET)	240142381.960801	240142380.93581			
Observation start date	2005-08-11T10:13:02	2005-08-11T10:13:00			
[s] Observation end time (MET)	240166448.961904	240166447.93691			
Observation end date	2005-08-11T16:54:09	2005-08-11T16:54:07			
Read mode	TIMED	TIMED			

2.3 Star Slots

2.4 FID Slots

A Summary

A.1 Status

V&V Scientist	Jen Lauer
V&V Date (YYYY-MM-DD)	2013.01.24
V&V Edition	1
V&V Disposition and Status	OK
V&V Charge Time	8.2205387494266

A.2 Comments