

V&V Reference Report

L2 ASCDS Version : 7.6.7.1

Observation 59508 - L2 Version 002
Chandra X-Ray Center

L2 Processing Date : Mar 19 2006

Contents

| | | |
|----------|-------------------------------|----------|
| 1 | Front | 2 |
| 2 | OBI | 3 |
| 2.1 | OBI | 3 |
| 2.1.1 | Images | 3 |
| 2.1.2 | Bias | 3 |
| 2.1.3 | Parameters | 4 |
| 2.1.4 | Events | 4 |
| 2.2 | Compared Parameters | 5 |
| 2.3 | Aspect | 6 |
| 2.4 | Star Slots | 8 |
| 2.5 | FID Slots | 8 |
| A | Summary | 9 |
| A.1 | Status | 9 |
| A.2 | Comments | 9 |

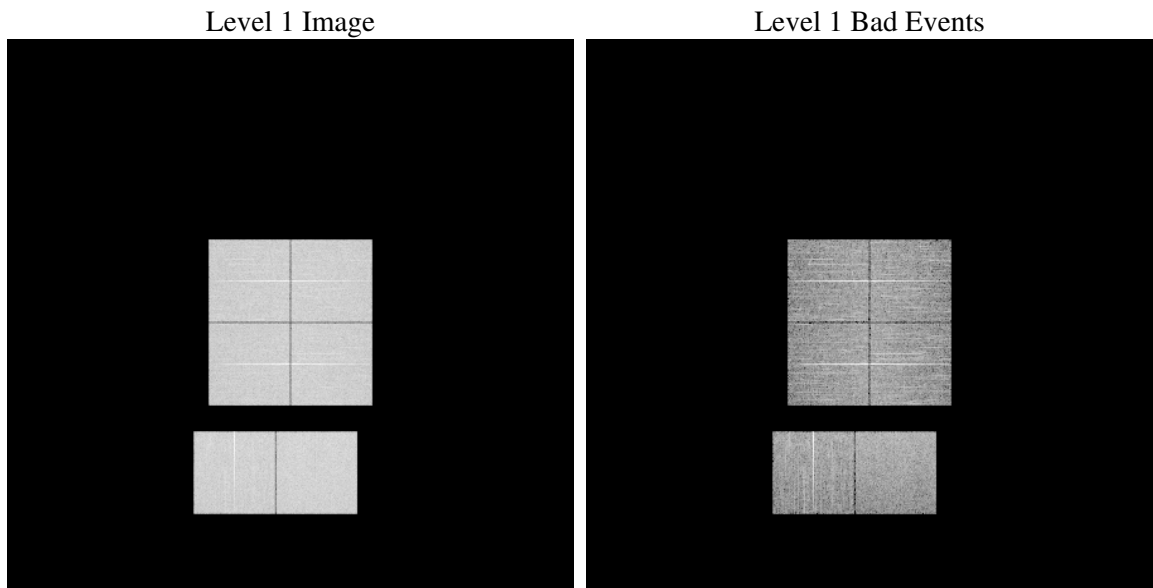
1 Front

| | |
|----------|---|
| seq_num | |
| obs_id | 59508 |
| title | ACIS-012367 diagnostics |
| observer | CHANDRA engineering request/realtime commanding |
| object | |
| dtcycle | 0 |
| cycle | P |
| ra_targ | 0.0 |
| dec_targ | 0.0 |
| ra_nom | 273.01983546019 |
| dec_nom | -20.023564683763 |
| roll_nom | 267.95919461394 |
| revision | 2 |
| ontime | 8220.7999693751 |
| livetime | 8116.7032501914 |
| ontime0 | 8139.7755218744 |
| ontime1 | 8217.5589891076 |
| ontime2 | 7945.316565007 |
| ontime3 | 8094.4017776549 |
| ontime6 | 8220.7999693751 |
| ontime7 | 8220.7999693751 |
| l2events | 1080227 |

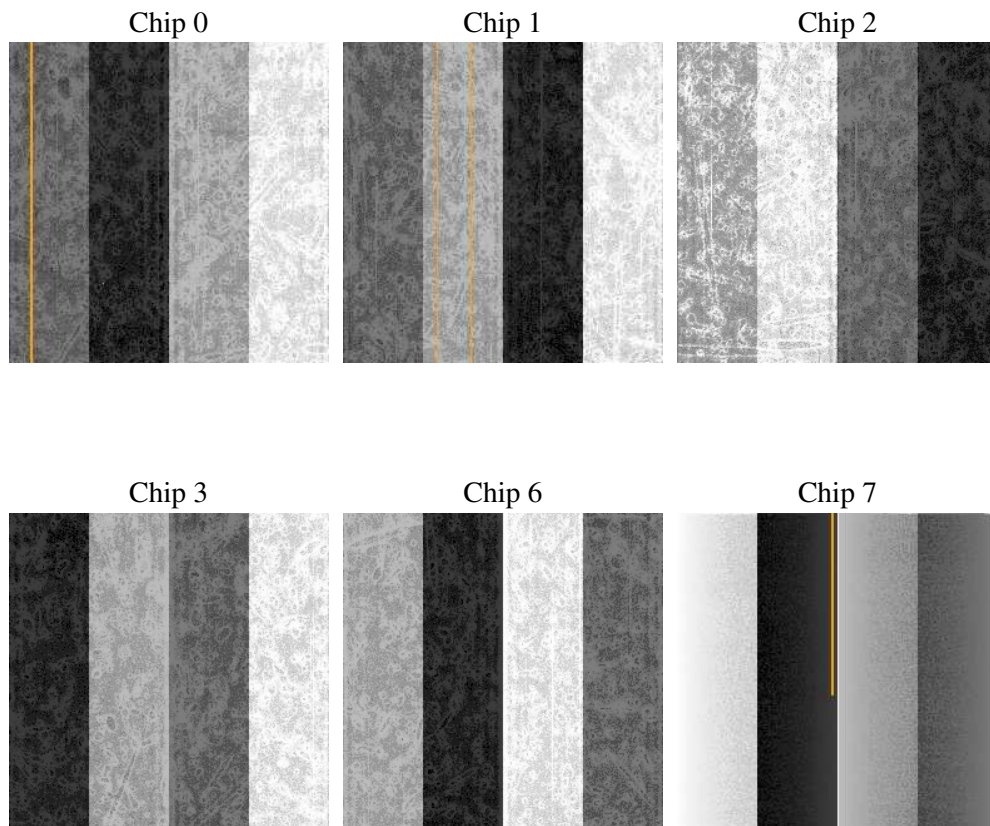
2 OBI

2.1 OBI

2.1.1 Images



2.1.2 Bias



2.1.3 Parameters

| | |
|----------|---------------------|
| obi_num | 0 |
| ascdsver | 7.6.7.1 |
| caldbver | 3.2.1 |
| date | 2006-03-19T15:04:49 |
| revision | 2 |

| | |
|----------------|-----------------|
| sched_exp_time | 0.0 |
| ontime | 8287.258099854 |
| ontime0 | 8206.2336523533 |
| ontime1 | 8284.0171195865 |
| ontime2 | 8011.7746954858 |
| ontime3 | 8160.8599081337 |
| ontime6 | 8287.258099854 |
| ontime7 | 8287.258099854 |
| l1events | 1481705 |

2.1.4 Events

| | ccd 0 | ccd 1 | ccd 2 | ccd 3 | ccd 6 | ccd 7 |
|-----------------|--------|--------|--------|--------|--------|--------|
| level 1 events | 239791 | 243132 | 237639 | 245987 | 253699 | 261457 |
| rejected events | 55489 | 55724 | 55528 | 59628 | 58386 | 60512 |
| rejected % | 23% | 22% | 23% | 24% | 23% | 23% |

| | ccd 0 | ccd 1 | ccd 2 | ccd 3 | ccd 6 | ccd 7 |
|----------------|--------|--------|--------|--------|--------|-------|
| grade 0 events | 101956 | 102841 | 102407 | 105184 | 106300 | 32631 |
| | 42% | 42% | 43% | 42% | 41% | 12% |
| grade 1 events | 597 | 510 | 634 | 637 | 510 | 108 |
| | 0% | 0% | 0% | 0% | 0% | 0% |
| grade 2 events | 32379 | 34028 | 30854 | 31990 | 34117 | 62518 |
| | 13% | 13% | 12% | 13% | 13% | 23% |
| grade 3 events | 12186 | 12179 | 12113 | 12147 | 12189 | 13799 |
| | 5% | 5% | 5% | 4% | 4% | 5% |
| grade 4 events | 11963 | 11897 | 11973 | 12230 | 12300 | 13664 |
| | 4% | 4% | 5% | 4% | 4% | 5% |
| grade 5 events | 3411 | 3398 | 3141 | 3664 | 3650 | 6704 |
| | 1% | 1% | 1% | 1% | 1% | 2% |
| grade 6 events | 27276 | 27953 | 26206 | 26227 | 31955 | 79913 |
| | 11% | 11% | 11% | 10% | 12% | 30% |
| grade 7 events | 50023 | 50326 | 50311 | 53908 | 52678 | 52120 |
| | 20% | 20% | 21% | 21% | 20% | 19% |

2.2 Compared Parameters

| Parameter | Planned | Actual | Parameter | Planned | Actual |
|-----------------------------------|---------------------|----------------------|---------------------------------|-----------|---------|
| Instrument | ACIS | ACIS | Obspar format version number | 6 | 6 |
| Detector | ACIS-012367 | ACIS-012367 | Obspar file type | PREDICTED | ACTUAL |
| Grating | NONE | NONE | Obspar update status | NONE | UPDATED |
| Data mode | FAINT | FAINT | On-chip summing requested | N | N |
| Observation mode | SECONDARY | SECONDARY | Subarray requested | NONE | NONE |
| Pointing RA | 0 | 273.0198354601907 | Alternating exposures requested | N | N |
| Pointing Dec | 0 | -20.02356468376323 | Primary exposure time | 3.2 | 3.2 |
| Pointing Roll | 0.0 | 267.9591946139415 | | | |
| SIM focus pos (mm) | -0.782348 | -0.6828225247311905 | | | |
| SIM defocus (mm) | 0 | 0.8505141146731063 | | | |
| SIM translation stage pos (mm) | -233.592463 | 250.466033080201 | | | |
| SIM translation stage offset (mm) | 0 | -0.01005468664627074 | | | |
| Observation start time | 240142381.960801 | 240142380.93581 | | | |
| Observation start date | 2005-08-11T10:13:02 | 2005-08-11T10:13:00 | | | |
| Observation end time | 240166448.961904 | 240166447.93691 | | | |
| Observation end date | 2005-08-11T16:54:09 | 2005-08-11T16:54:07 | | | |
| Read mode | TIMED | TIMED | | | |

2.3 Aspect

2.4 Star Slots

2.5 FID Slots

A Summary

A.1 Status

| | |
|----------------------------|-------------|
| V&V Scientist | Doug Morgan |
| V&V Date (YYYY-MM-DD) | 2006.03.20 |
| V&V Edition | 1 |
| V&V Disposition and Status | OK |
| V&V Charge Time | 8.22079996 |

A.2 Comments