

# V&V Reference Report

## L2 ASCDS Version : 7.6.7.1

Observation 59502 - L2 Version 002  
Chandra X-Ray Center

L2 Processing Date : Mar 19 2006

## Contents

<b>1</b>	<b>Front</b>	<b>2</b>
<b>2</b>	<b>OBI</b>	<b>3</b>
2.1	OBI . . . . .	3
2.1.1	Images . . . . .	3
2.1.2	Bias . . . . .	3
2.1.3	Parameters . . . . .	4
2.1.4	Events . . . . .	4
2.2	Compared Parameters . . . . .	5
2.3	Aspect . . . . .	6
2.4	Star Slots . . . . .	8
2.5	FID Slots . . . . .	8
<b>A</b>	<b>Summary</b>	<b>9</b>
A.1	Status . . . . .	9
A.2	Comments . . . . .	9

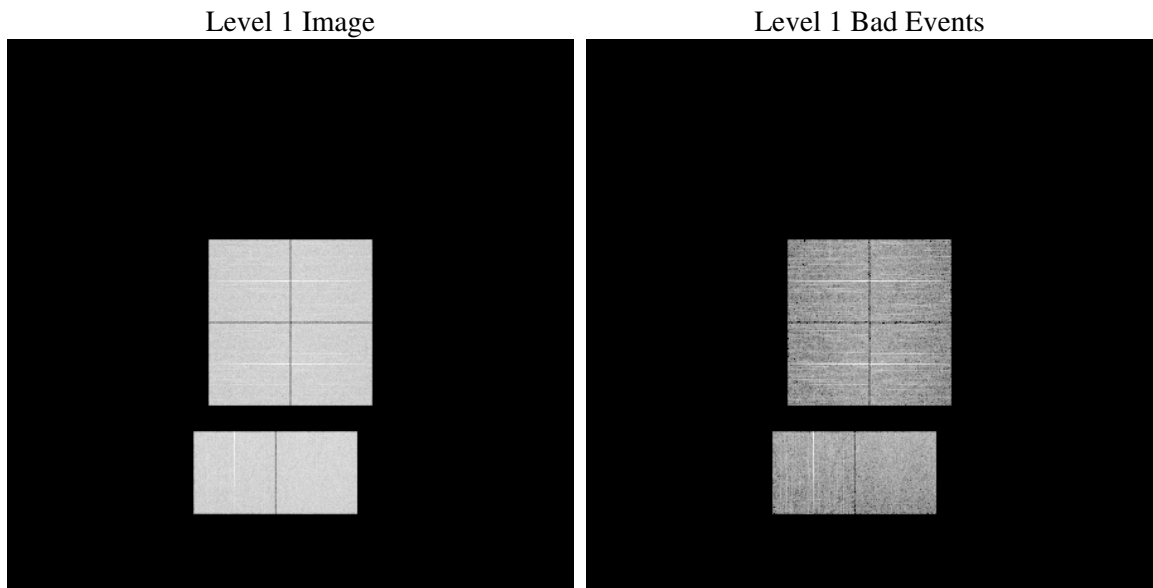
# 1 Front

seq_num	&#160
obs_id	59502
title	ACIS-012367 diagnostics
observer	CHANDRA engineering request/realtime commanding
object	&#160
dtcycle	0
cycle	P
ra_targ	0.0
dec_targ	0.0
ra_nom	2.9780106958208
dec_nom	-3.9816686129491
roll_nom	107.28636442784
revision	2
ontime	7803.3701564372
livetime	7704.5591848909
ontime0	7570.0601551235
ontime1	7758.0783029795
ontime2	7404.8519207239
ontime3	7599.1469183266
ontime6	7803.5343164206
ontime7	7803.3701564372
l2events	1020398

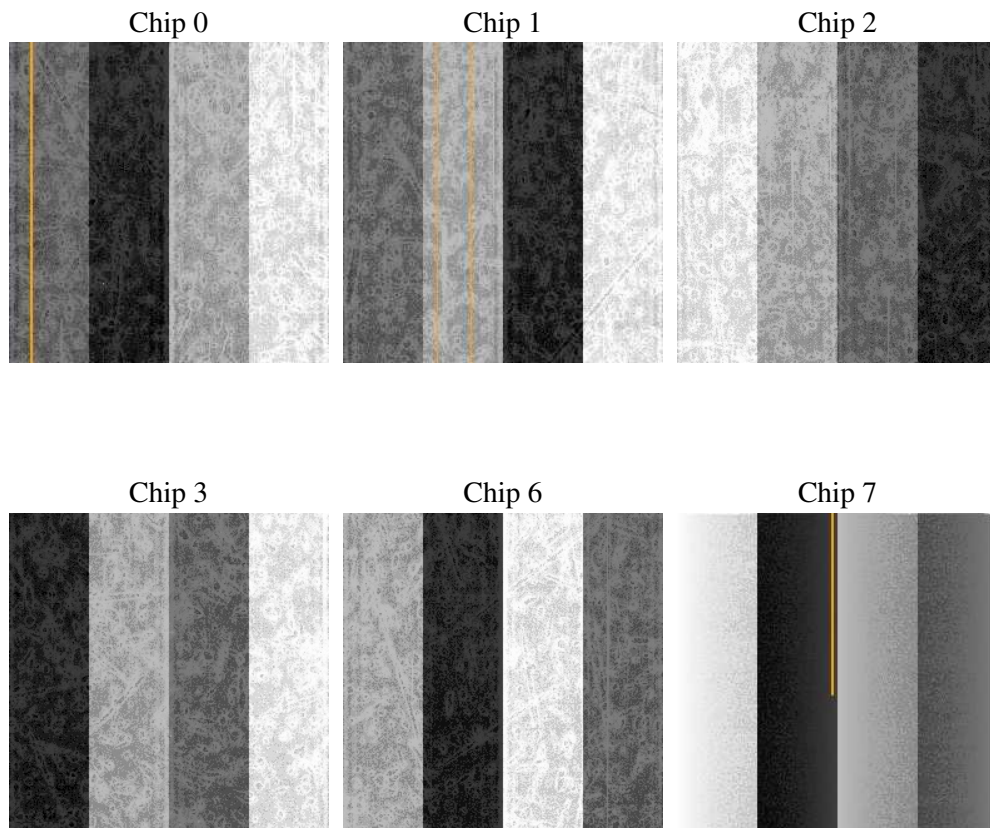
## 2 OBI

### 2.1 OBI

#### 2.1.1 Images



#### 2.1.2 Bias



### 2.1.3 Parameters

obi_num	0
ascdsver	7.6.7.1
caldsver	3.2.1
date	2006-03-19T16:04:21
revision	2

sched_exp_time	0.0
ontime	7804.3584977984
ontime0	7571.0074564815
ontime1	7758.9845643342
ontime2	7405.7171420753
ontime3	7600.1762996912
ontime6	7804.3584977984
ontime7	7804.3584977984
l1events	1398873

### 2.1.4 Events

	ccd 0	ccd 1	ccd 2	ccd 3	ccd 6	ccd 7
level 1 events	223880	229188	224373	229539	242555	249338
rejected events	52465	52171	54459	54420	56384	55483
rejected %	23%	22%	24%	23%	23%	22%

	ccd 0	ccd 1	ccd 2	ccd 3	ccd 6	ccd 7
grade 0 events	93657	96187	94817	98053	100534	32889
	41%	41%	42%	42%	41%	13%
grade 1 events	525	489	605	616	494	97
	0%	0%	0%	0%	0%	0%
grade 2 events	29793	31785	28548	29752	32335	58109
	13%	13%	12%	12%	13%	23%
grade 3 events	11327	11394	11101	11606	11458	13872
	5%	4%	4%	5%	4%	5%
grade 4 events	11120	11348	11130	11480	11796	13853
	4%	4%	4%	5%	4%	5%
grade 5 events	3091	3245	2920	3369	3575	6578
	1%	1%	1%	1%	1%	2%
grade 6 events	25518	26303	24318	24228	30048	75132
	11%	11%	10%	10%	12%	30%
grade 7 events	48849	48437	50934	50435	52315	48808
	21%	21%	22%	21%	21%	19%

## 2.2 Compared Parameters

Parameter	Planned	Actual	Parameter	Planned	Actual
Instrument	ACIS	ACIS	Obspar format version number	6	6
Detector	ACIS-012367	ACIS-012367	Obspar file type	PREDICTED	ACTUAL
Grating	NONE	NONE	Obspar update status	NONE	UPDATED
Data mode	FAINT	FAINT	On-chip summing requested	N	N
Observation mode	SECONDARY	SECONDARY	Subarray requested	NONE	NONE
Pointing RA	0	2.978010695820823	Alternating exposures requested	N	N
Pointing Dec	0	-3.981668612949079	Primary exposure time	3.2	3.2
Pointing Roll	0.0	107.286364427836			
SIM focus pos (mm)	-0.782348	-0.6828225247311905			
SIM defocus (mm)	0	0.8505141146731063			
SIM translation stage pos (mm)	-233.592463	250.466033080201			
SIM translation stage offset (mm)	0	-0.01005468664627074			
Observation start time	240564649.180172	240564648.15517			
Observation start date	2005-08-16T07:30:49	2005-08-16T07:30:48			
Observation end time	240580403.430894	240580402.4059			
Observation end date	2005-08-16T11:53:23	2005-08-16T11:53:22			
Read mode	TIMED	TIMED			

## 2.3 Aspect



## **2.4 Star Slots**

## **2.5 FID Slots**



## A Summary

### A.1 Status

V&V Scientist	Doug Morgan
V&V Date (YYYY-MM-DD)	2006.03.20
V&V Edition	1
V&V Disposition and Status	OK
V&V Charge Time	7.80337015

### A.2 Comments