

# V&V Reference Report

## L2 ASCDS Version : 7.6.7.1

Observation 59497 - L2 Version 002  
Chandra X-Ray Center

L2 Processing Date : Mar 20 2006

## Contents

<b>1</b>	<b>Front</b>	<b>2</b>
<b>2</b>	<b>OBI</b>	<b>3</b>
2.1	OBI . . . . .	3
2.1.1	Images . . . . .	3
2.1.2	Bias . . . . .	3
2.1.3	Parameters . . . . .	4
2.1.4	Events . . . . .	4
2.2	Compared Parameters . . . . .	5
2.3	Aspect . . . . .	6
2.4	Star Slots . . . . .	8
2.5	FID Slots . . . . .	8
<b>A</b>	<b>Summary</b>	<b>9</b>
A.1	Status . . . . .	9
A.2	Comments . . . . .	9

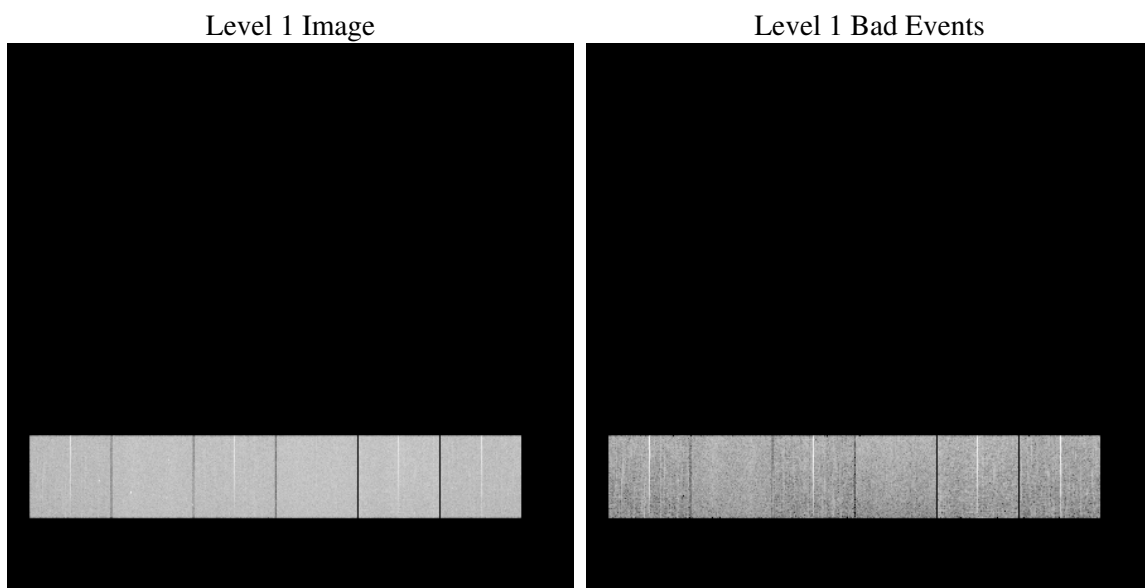
# 1 Front

seq_num	&#160
obs_id	59497
title	ACIS-456789 diagnostics
observer	CHANDRA engineering request/realtime commanding
object	&#160
dtcycle	0
cycle	P
ra_targ	0.0
dec_targ	0.0
ra_nom	346.01316429221
dec_nom	-37.973385121562
roll_nom	35.817773636157
revision	2
ontime	8249.5999692678
livetime	8145.1385671442
ontime4	7270.8244478703
ontime5	8249.5999692678
ontime6	7922.261228621
ontime7	8249.5999692678
ontime8	8087.5511040688
ontime9	7666.2233478725
l2events	1037443

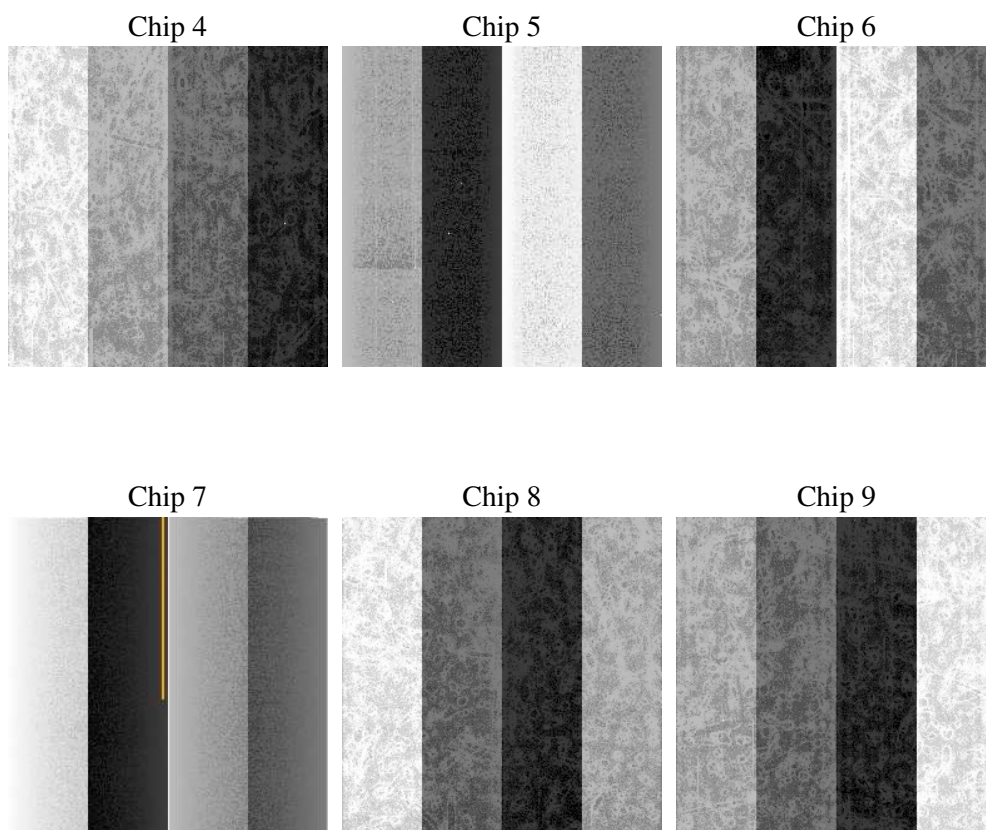
## 2 OBI

### 2.1 OBI

#### 2.1.1 Images



#### 2.1.2 Bias



### 2.1.3 Parameters

obi_num	0
ascdsver	7.6.7.1
caldsver	3.2.1
date	2006-03-20T22:04:58
revision	2

sched_exp_time	0.0
ontime	8280.7773197293
ontime4	7302.0017983317
ontime5	8280.7773197293
ontime6	7953.4385790825
ontime7	8280.7773197293
ontime8	8118.7284545302
ontime9	7697.400698334
l1events	1485196

### 2.1.4 Events

	ccd 4	ccd 5	ccd 6	ccd 7	ccd 8	ccd 9
level 1 events	219807	249980	248649	264185	267328	235247
rejected events	61436	66118	61933	63651	68972	60414
rejected %	27%	26%	24%	24%	25%	25%

	ccd 4	ccd 5	ccd 6	ccd 7	ccd 8	ccd 9
grade 0 events	93005	16513	100151	30830	107227	96924
	42%	6%	40%	11%	40%	41%
grade 1 events	749	129	519	96	574	552
	0%	0%	0%	0%	0%	0%
grade 2 events	23613	85395	34097	62669	35252	29348
	10%	34%	13%	23%	13%	12%
grade 3 events	11002	5281	11444	13233	12866	11145
	5%	2%	4%	5%	4%	4%
grade 4 events	10669	4933	11246	12958	12848	11198
	4%	1%	4%	4%	4%	4%
grade 5 events	3197	5897	3640	6686	4700	3824
	1%	2%	1%	2%	1%	1%
grade 6 events	20792	72497	30534	81600	30934	26967
	9%	29%	12%	30%	11%	11%
grade 7 events	56780	59335	57018	56113	62927	55289
	25%	23%	22%	21%	23%	23%

## 2.2 Compared Parameters

Parameter	Planned	Actual	Parameter	Planned	Actual
Instrument	ACIS	ACIS	Obspar format version number	6	6
Detector	ACIS-456789	ACIS-456789	Obspar file type	PREDICTED	ACTUAL
Grating	NONE	NONE	Obspar update status	NONE	UPDATED
Data mode	FAINT	FAINT	On-chip summing requested	N	N
Observation mode	SECONDARY	SECONDARY	Subarray requested	NONE	NONE
Pointing RA	0	346.0131642922098	Alternating exposures requested	N	N
Pointing Dec	0	-37.97338512156198	Primary exposure time	3.2	3.2
Pointing Roll	0.0	35.81777363615682			
SIM focus pos (mm)	-0.684267	-0.6828225247311905			
SIM defocus (mm)	0	0.8505141146731063			
SIM translation stage pos (mm)	-190.132523	250.466033080201			
SIM translation stage offset (mm)	0	-0.01005468664627074			
Observation start time	240841700.542894	240841699.51789			
Observation start date	2005-08-19T12:28:21	2005-08-19T12:28:19			
Observation end time	240852208.843376	240852207.81837			
Observation end date	2005-08-19T15:23:29	2005-08-19T15:23:27			
Read mode	TIMED	TIMED			

## 2.3 Aspect



## **2.4 Star Slots**

## **2.5 FID Slots**



## A Summary

### A.1 Status

V&V Scientist	Doug Morgan
V&V Date (YYYY-MM-DD)	2006.03.20
V&V Edition	1
V&V Disposition and Status	OK
V&V Charge Time	8.24959996

### A.2 Comments