

# V&V Reference Report

## L2 ASCDS Version : 8.5.1.1

Observation 59405 - L2 Version 4  
Chandra X-Ray Center

L2 Processing Date : Mar 8 2013

## Contents

<b>1</b>	<b>Front</b>	<b>2</b>
<b>2</b>	<b>OBI</b>	<b>3</b>
2.1	OBI . . . . .	3
2.1.1	Images . . . . .	3
2.1.2	Bias . . . . .	3
2.1.3	Parameters . . . . .	4
2.1.4	Events . . . . .	4
2.2	Compared Parameters . . . . .	5
2.3	Star Slots . . . . .	6
2.4	FID Slots . . . . .	6
<b>A</b>	<b>Summary</b>	<b>7</b>
A.1	Status . . . . .	7
A.2	Comments . . . . .	7

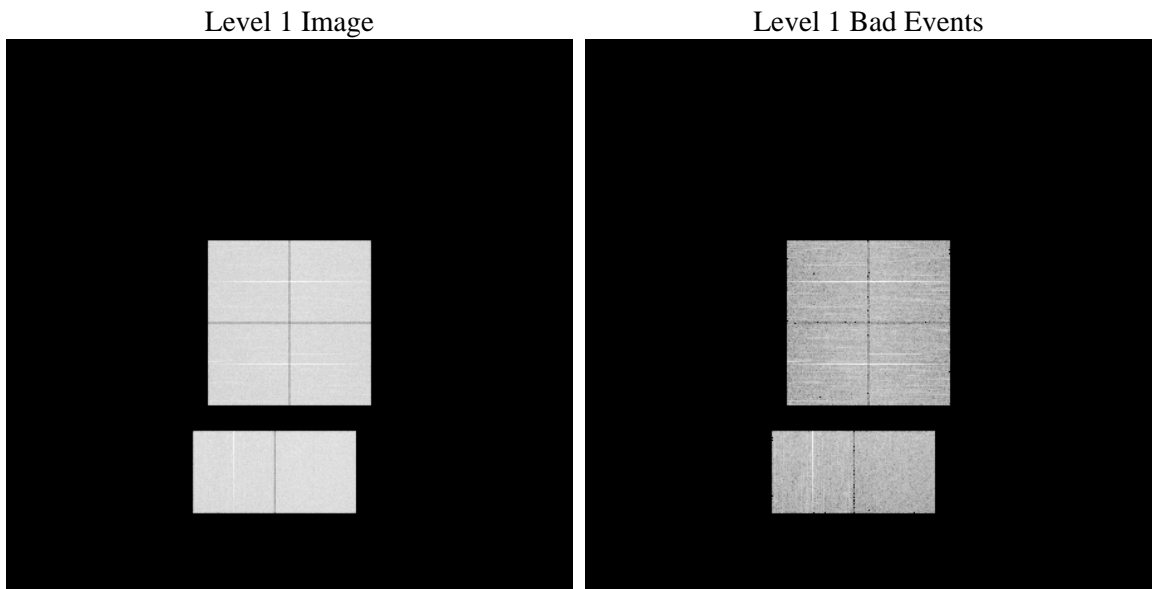
# 1 Front

seq_num	&#160	Sequence number
obs_id	59405	Observation id
title	ACIS-012367 diagnostics	Proposal title
observer	CHANDRA engineering request/realtime commanding	Principal investig
object	&#160	Source name
dtcycle	0	&#160
cycle	P	events from which exps? Prim/Second/Both
ra_targ	0.0	Observer's specified target RA [deg]
dec_targ	0.0	Observer's specified target Dec [deg]
ra_nom	39.495689014652	Nominal RA [deg]
dec_nom	-8.4697695436866	Nominal Dec [deg]
roll_nom	60.898266043501	Nominal Roll [deg]
revision	4	Processing version of data
ontime	8214.399969399	Sum of GTIs [s]
livetime	8110.3842908686	Livetime [s]
ontime0	7494.9021039307	Sum of GTIs [s]
ontime1	7809.2775812149	Sum of GTIs [s]
ontime2	7310.1661076546	Sum of GTIs [s]
ontime3	7456.0106983483	Sum of GTIs [s]
ontime6	7854.6510468721	Sum of GTIs [s]
ontime7	8214.399969399	Sum of GTIs [s]
l2events	1082591	Number of level 2 events

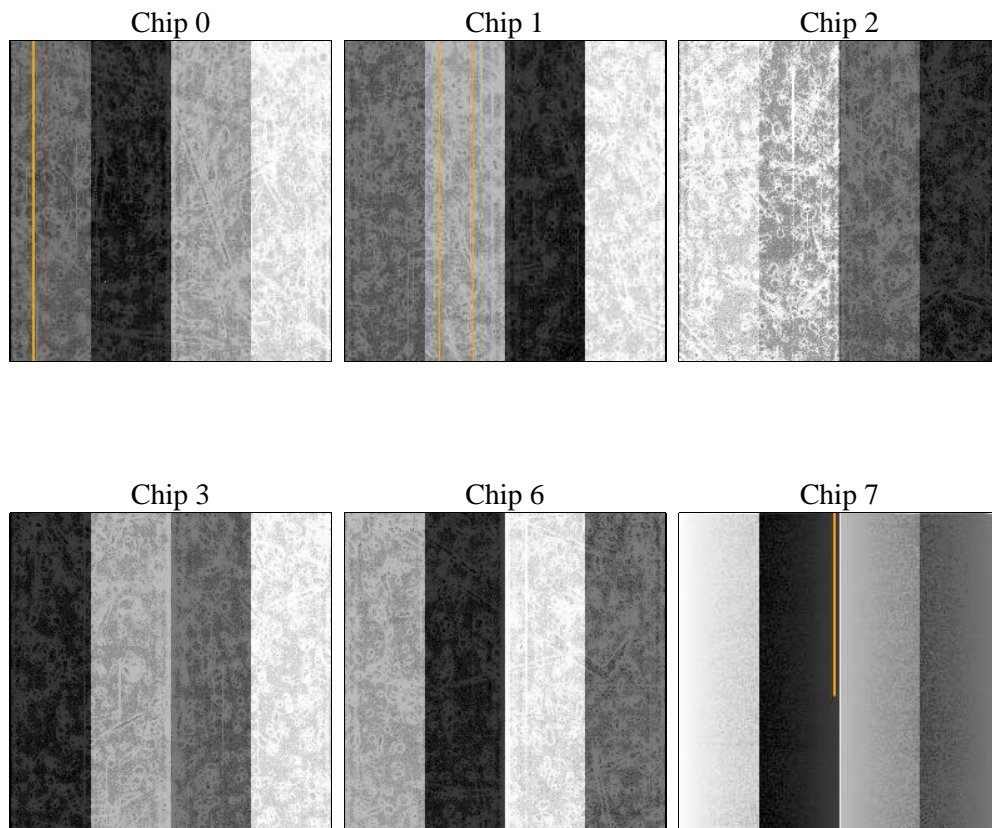
## 2 OBI

### 2.1 OBI

#### 2.1.1 Images



#### 2.1.2 Bias



### 2.1.3 Parameters

obi_num	0	Obi number	sched_exp_time	0.0	[s] Scheduled observation exposure time
ascdsver	8.5.1.1	Processing system revision	ontime	8214.399969399	Sum of GTIs [s]
caldbver	4.5.6	&#160	ontime0	7494.9021039307	Sum of GTIs [s]
date	2013-03-08T21:07:18	Date and time of file creation	ontime1	7809.2775812149	Sum of GTIs [s]
revision	4	Processing version of data	ontime2	7310.1661076546	Sum of GTIs [s]
			ontime3	7456.0106983483	Sum of GTIs [s]
			ontime6	7854.6510468721	Sum of GTIs [s]
			ontime7	8214.399969399	Sum of GTIs [s]
			l1events	1486888	Number of level 1 events

### 2.1.4 Events

	ccd 0	ccd 1	ccd 2	ccd 3	ccd 6	ccd 7		ccd 0	ccd 1	ccd 2	ccd 3	ccd 6	ccd 7
level 1 events	234503	246209	233207	239129	259619	274221	grade 0 events	98170	101244	98676	100921	104820	51613
rejected events	55194	58535	57733	58835	64262	54153		41%	41%	42%	42%	40%	18%
rejected %	23%	23%	24%	24%	24%	19%	grade 1 events	585	545	647	677	552	181
								0%	0%	0%	0%	0%	0%
							grade 2 events	31423	34653	29314	30377	34074	48709
								13%	14%	12%	12%	13%	17%
							grade 3 events	11507	11756	11382	11781	12075	21117
								4%	4%	4%	4%	4%	7%
							grade 4 events	11599	11698	11376	11800	11969	21018
								4%	4%	4%	4%	4%	7%
							grade 5 events	3145	3462	3118	3429	3797	8925
								1%	1%	1%	1%	1%	3%
							grade 6 events	27967	29750	26172	26737	34014	79320
								11%	12%	11%	11%	13%	28%
							grade 7 events	50107	53101	52522	53407	58318	43338
								21%	21%	22%	22%	22%	15%

## 2.2 Compared Parameters

Parameter	Planned	Actual	Parameter	Planned	Actual
Instrument	ACIS	ACIS	Obspar format version number	7	7
Detector	ACIS-012367	ACIS-012367	Obspar file type	PREDICTED	ACTUAL
Grating	NONE	NONE	Obspar update status	NONE	UPDATED
Data mode	FAINT	FAINT	On-chip summing requested	N	N
Observation mode	SECONDARY	SECONDARY	Subarray requested	NONE	NONE
[deg] Pointing RA	0	39.49568901465182	Alternating exposures requested	N	N
[deg] Pointing Dec	0	-8.469769543686645	[s] Primary exposure time	3.2	3.2
[deg] Pointing Roll	0.0	60.89826604350149			
[mm] SIM focus pos	-0.782348	-0.6828225247311905			
[mm] SIM defocus	0	0.8505141146731063			
[mm] SIM translation stage pos	-233.592463	250.466033080201			
[mm] SIM translation stage offset	0	-0.01005468664627074			
[s] Observation start time (MET)	245171392.991836	245171391.96684			
Observation start date	2005-10-08T15:09:53	2005-10-08T15:09:51			
[s] Observation end time (MET)	245195351.342939	245195350.31794			
Observation end date	2005-10-08T21:49:11	2005-10-08T21:49:10			
Read mode	TIMED	TIMED			

## **2.3 Star Slots**

## **2.4 FID Slots**

# A Summary

## A.1 Status

V&V Scientist	Beth Sundheim
V&V Date (YYYY-MM-DD)	2013.03.11
V&V Edition	1
V&V Disposition and Status	OK
V&V Charge Time	8.214399969399

## A.2 Comments

As a consequence of the DEA-A shutdown anomaly on Sep 15th (DOY258), the reported value of the ACIS FP temperature was ~1.3 degrees warmer than the actual temperature. The value for FP temperature reported in the headers of the Level 2 event file and the Mission Timeline files are incorrect by this amount for this processing. However, the temperature is corrected in the processing in order to obtain the correct temperature for the CTI correction. So the calibrated data are correct. If using the FP temp values in the headers of data files (some CIAO tools require this information), investigators should subtract 1.3 degrees from the reported temperature to determine the true temperature.