

V&V Reference Report

L2 ASCDS Version : 7.6.7.1

Observation 59365 - L2 Version 002
Chandra X-Ray Center

L2 Processing Date : Apr 2 2006

Contents

1	Front	2
2	OBI	3
2.1	OBI	3
2.1.1	Images	3
2.1.2	Bias	3
2.1.3	Parameters	4
2.1.4	Events	4
2.2	Compared Parameters	5
2.3	Aspect	6
2.4	Star Slots	8
2.5	FID Slots	8
A	Summary	9
A.1	Status	9
A.2	Comments	9

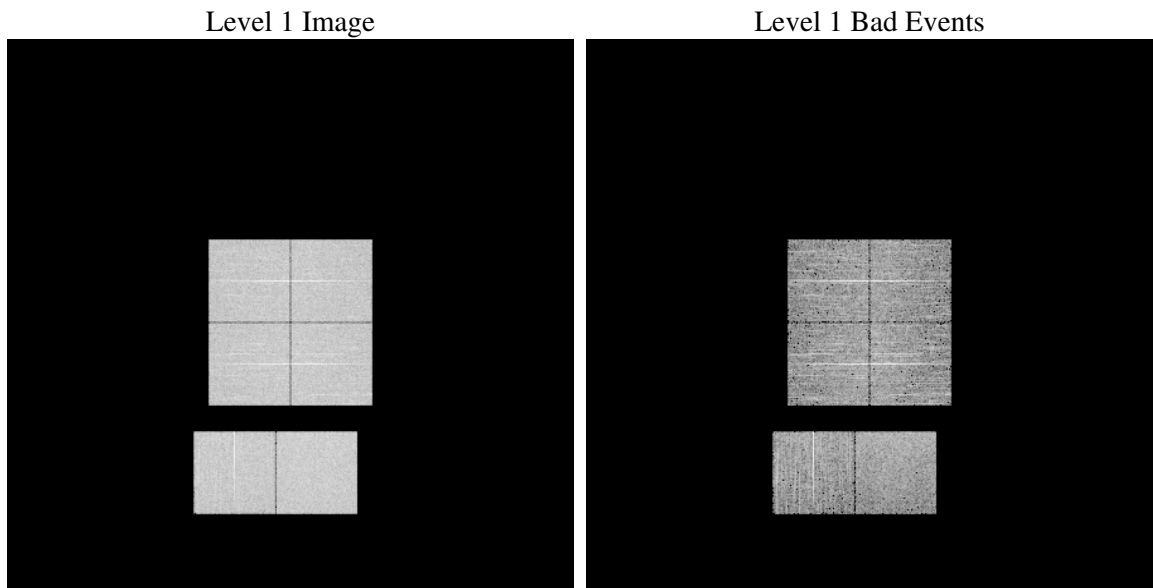
1 Front

seq_num	
obs_id	59365
title	ACIS-012367 diagnostics
observer	CHANDRA engineering request/realtime commanding
object	
dtcycle	0
cycle	P
ra_targ	0.0
dec_targ	0.0
ra_nom	45.013808779034
dec_nom	-13.971871693359
roll_nom	27.196771312293
revision	2
ontime	4460.7999833822
livetime	4404.3146480214
ontime0	4460.7999833822
ontime1	4460.7999833822
ontime2	4460.7999833822
ontime3	4460.7999833822
ontime6	4460.7999833822
ontime7	4460.7999833822
l2events	561743

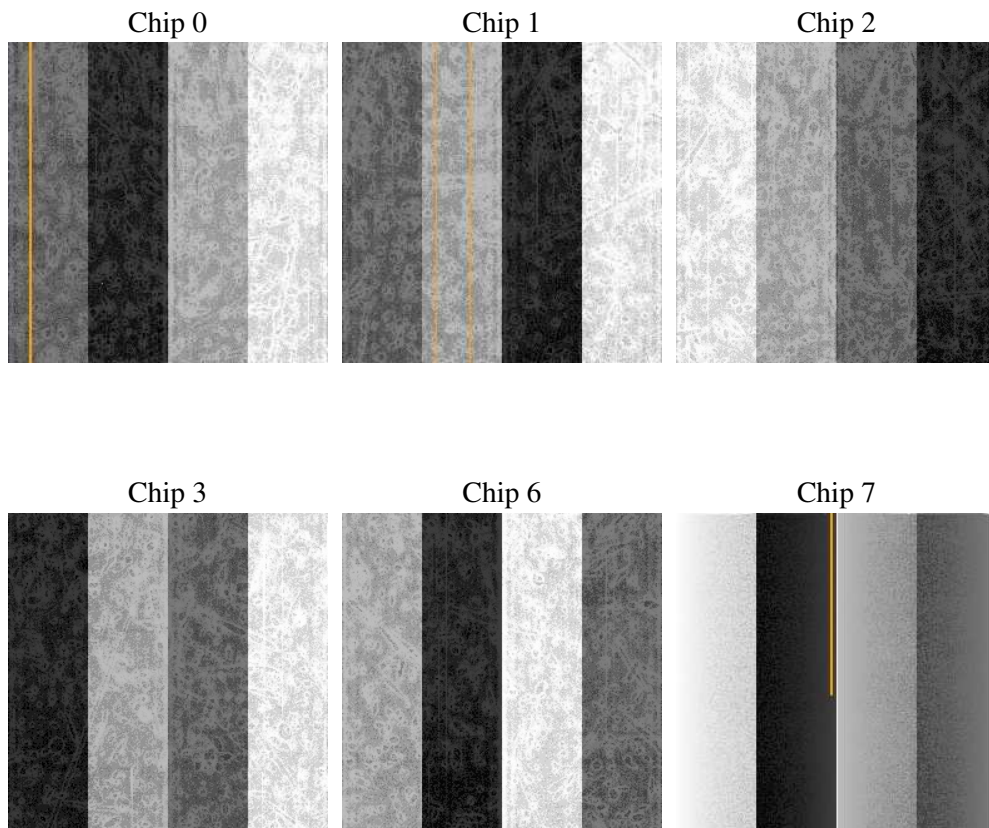
2 OBI

2.1 OBI

2.1.1 Images



2.1.2 Bias



2.1.3 Parameters

obi_num	1
ascdsver	7.6.7.1
caldsver	3.2.1
date	2006-04-03T00:35:38
revision	2

sched_exp_time	0.0
ontime	4540.6545090377
ontime0	4540.6545090377
ontime1	4540.6545090377
ontime2	4540.6545090377
ontime3	4540.6545090377
ontime6	4540.6545090377
ontime7	4540.6545090377
l1events	802498

2.1.4 Events

	ccd 0	ccd 1	ccd 2	ccd 3	ccd 6	ccd 7
level 1 events	129244	129051	132693	134332	136074	141104
rejected events	33505	32813	36043	36971	36043	35837
rejected %	25%	25%	27%	27%	26%	25%

	ccd 0	ccd 1	ccd 2	ccd 3	ccd 6	ccd 7
grade 0 events	53367	53147	55070	55264	55148	17142
	41%	41%	41%	41%	40%	12%
grade 1 events	345	273	398	347	266	68
	0%	0%	0%	0%	0%	0%
grade 2 events	17095	17713	16510	17092	17534	32821
	13%	13%	12%	12%	12%	23%
grade 3 events	6421	6320	6407	6602	6343	7314
	4%	4%	4%	4%	4%	5%
grade 4 events	6366	6319	6376	6483	6412	7103
	4%	4%	4%	4%	4%	5%
grade 5 events	1906	1943	1840	2027	2125	3762
	1%	1%	1%	1%	1%	2%
grade 6 events	14248	14453	14058	13734	16430	42779
	11%	11%	10%	10%	12%	30%
grade 7 events	29496	28883	32034	32783	31816	30115
	22%	22%	24%	24%	23%	21%

2.2 Compared Parameters

Parameter	Planned	Actual	Parameter	Planned	Actual
Instrument	ACIS	ACIS	Obspar format version number	6	6
Detector	ACIS-012367	ACIS-012367	Obspar file type	PREDICTED	ACTUAL
Grating	NONE	NONE	Obspar update status	NONE	UPDATED
Data mode	FAINT	FAINT	On-chip summing requested	N	N
Observation mode	SECONDARY	SECONDARY	Subarray requested	NONE	NONE
Pointing RA	0	45.01380877903354	Alternating exposures requested	N	N
Pointing Dec	0	-13.97187169335917	Primary exposure time	3.2	3.2
Pointing Roll	0.0	27.19677131229316			
SIM focus pos (mm)	-0.782348	-0.6828225247311905			
SIM defocus (mm)	0	0.8505141146731063			
SIM translation stage pos (mm)	-233.592463	250.466033080201			
SIM translation stage offset (mm)	0	-0.01005468664627074			
Observation start time	246769204.065441	246769203.04044			
Observation start date	2005-10-27T03:00:04	2005-10-27T03:00:03			
Observation end time	246789259.216366	246789258.19136			
Observation end date	2005-10-27T08:34:19	2005-10-27T08:34:18			
Read mode	TIMED	TIMED			

2.3 Aspect

2.4 Star Slots

2.5 FID Slots

A Summary

A.1 Status

V&V Scientist	Jen Lauer
V&V Date (YYYY-MM-DD)	2006.04.03
V&V Edition	1
V&V Disposition and Status	OK
V&V Charge Time	4.46079998

A.2 Comments