

V&V Reference Report

L2 ASCDS Version : 8.5.1.1

Observation 59338 - L2 Version 3
Chandra X-Ray Center

L2 Processing Date : Dec 31 2012

Contents

1	Front	2
2	OBI	3
2.1	OBI	3
2.1.1	Images	3
2.1.2	Bias	3
2.1.3	Parameters	4
2.1.4	Events	4
2.2	Compared Parameters	5
2.3	Star Slots	6
2.4	FID Slots	6
A	Summary	7
A.1	Status	7
A.2	Comments	7

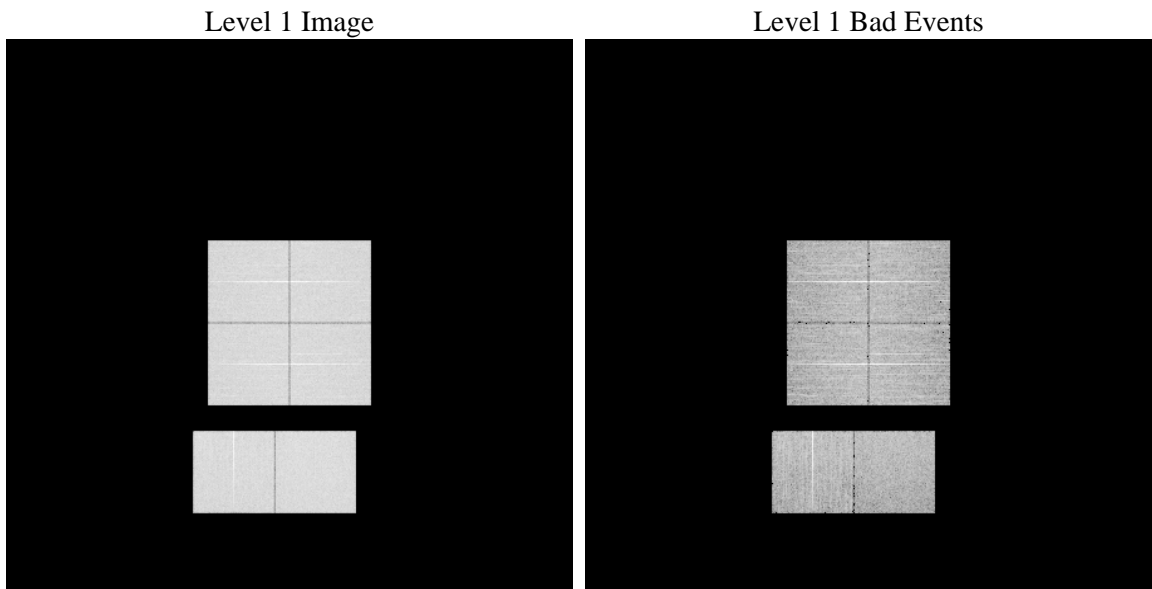
1 Front

seq_num	 	Sequence number
obs_id	59338	Observation id
title	ACIS-012367 diagnostics	Proposal title
observer	CHANDRA engineering request/realtime commanding	Principal investig
object	 	Source name
dtcycle	0	
cycle	P	events from which exps? Prim/Second/Both
ra_targ	0.0	Observer's specified target RA [deg]
dec_targ	0.0	Observer's specified target Dec [deg]
ra_nom	30.97930187597	Nominal RA [deg]
dec_nom	42.976048489943	Nominal Dec [deg]
roll_nom	206.92669620429	Nominal Roll [deg]
revision	3	Processing version of data
ontime	7800.4048769176	Sum of GTIs [s]
livetime	7701.6314535261	Livetime [s]
ontime0	7767.9539141059	Sum of GTIs [s]
ontime1	7797.0818066299	Sum of GTIs [s]
ontime2	7703.0520778	Sum of GTIs [s]
ontime3	7764.7950434685	Sum of GTIs [s]
ontime6	7800.2407169342	Sum of GTIs [s]
ontime7	7800.4048769176	Sum of GTIs [s]
l2events	992837	Number of level 2 events

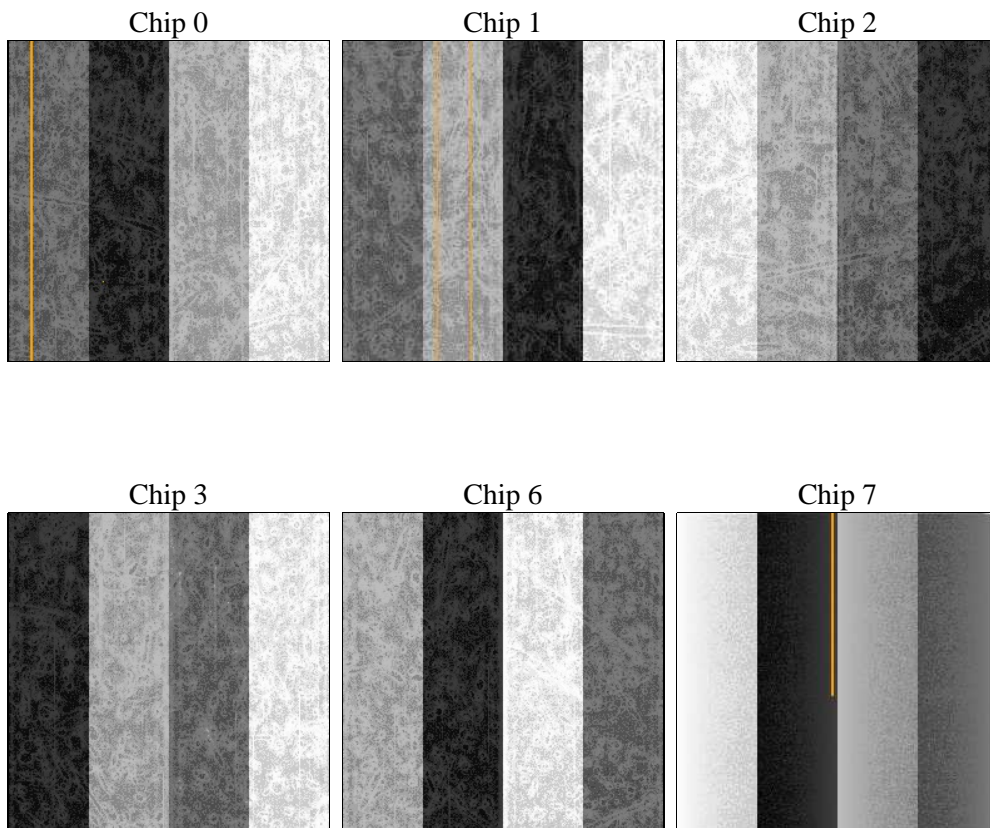
2 OBI

2.1 OBI

2.1.1 Images



2.1.2 Bias



2.1.3 Parameters

obi_num	0	Obi number	sched_exp_time	0.0	[s] Scheduled observation exposure time
ascdsver	8.5.1.1	Processing system revision	ontime	7800.4048769176	Sum of GTIs [s]
caldsver	4.5.5	 	ontime0	7767.9539141059	Sum of GTIs [s]
date	2012-12-31T15:44:38	Date and time of file creation	ontime1	7797.0818066299	Sum of GTIs [s]
revision	3	Processing version of data	ontime2	7703.0520778	Sum of GTIs [s]
			ontime3	7764.7950434685	Sum of GTIs [s]
			ontime6	7800.2407169342	Sum of GTIs [s]
			ontime7	7800.4048769176	Sum of GTIs [s]
			l1events	1398330	Number of level 1 events

2.1.4 Events

	ccd 0	ccd 1	ccd 2	ccd 3	ccd 6	ccd 7		ccd 0	ccd 1	ccd 2	ccd 3	ccd 6	ccd 7
level 1 events	227422	228026	228738	230631	237862	245651	grade 0 events	91885	91860	93893	95015	95360	44606
rejected events	59476	58363	60734	61295	61772	51727		40%	40%	41%	41%	40%	18%
rejected %	26%	25%	26%	26%	25%	21%	grade 1 events	568	519	592	624	522	132
								0%	0%	0%	0%	0%	0%
							grade 2 events	29634	30540	28145	28642	30280	42365
								13%	13%	12%	12%	12%	17%
							grade 3 events	10994	10723	11178	11046	11072	18999
								4%	4%	4%	4%	4%	7%
							grade 4 events	10769	10949	10998	11222	11001	18795
								4%	4%	4%	4%	4%	7%
							grade 5 events	3399	3522	3216	3769	3849	8886
								1%	1%	1%	1%	1%	3%
							grade 6 events	24664	25591	23790	23411	28377	69159
								10%	11%	10%	10%	11%	28%
							grade 7 events	55509	54322	56926	56902	57401	42709
								24%	23%	24%	24%	24%	17%

2.2 Compared Parameters

Parameter	Planned	Actual	Parameter	Planned	Actual
Instrument	ACIS	ACIS	Obspar format version number	7	7
Detector	ACIS-012367	ACIS-012367	Obspar file type	PREDICTED	ACTUAL
Grating	NONE	NONE	Obspar update status	NONE	UPDATED
Data mode	FAINT	FAINT	On-chip summing requested	N	N
Observation mode	SECONDARY	SECONDARY	Subarray requested	NONE	NONE
[deg] Pointing RA	0	30.97930187596996	Alternating exposures requested	N	N
[deg] Pointing Dec	0	42.97604848994292	[s] Primary exposure time	3.2	3.2
[deg] Pointing Roll	0.0	206.9266962042855			
[mm] SIM focus pos	-0.782348	-0.7809083437167272			
[mm] SIM defocus	0	0.7524282956875696			
[mm] SIM translation stage pos	-233.592463	250.466033080201			
[mm] SIM translation stage offset	0	-0.01005468664627074			
[s] Observation start time (MET)	247870492.816209	247870491.79123			
Observation start date	2005-11-08T20:54:53	2005-11-08T20:54:51			
[s] Observation end time (MET)	247889268.7671	247889267.74209			
Observation end date	2005-11-09T02:07:49	2005-11-09T02:07:47			
Read mode	TIMED	TIMED			

2.3 Star Slots

2.4 FID Slots

A Summary

A.1 Status

V&V Scientist	Jen Lauer
V&V Date (YYYY-MM-DD)	2013.01.17
V&V Edition	1
V&V Disposition and Status	OK
V&V Charge Time	7.8004048769176

A.2 Comments