

V&V Reference Report

L2 ASCDS Version : 7.6.7.1

Observation 59338 - L2 Version 002
Chandra X-Ray Center

L2 Processing Date : Apr 5 2006

Contents

1	Front	2
2	OBI	3
2.1	OBI	3
2.1.1	Images	3
2.1.2	Bias	3
2.1.3	Parameters	4
2.1.4	Events	4
2.2	Compared Parameters	5
2.3	Aspect	6
2.4	Star Slots	8
2.5	FID Slots	8
A	Summary	9
A.1	Status	9
A.2	Comments	9

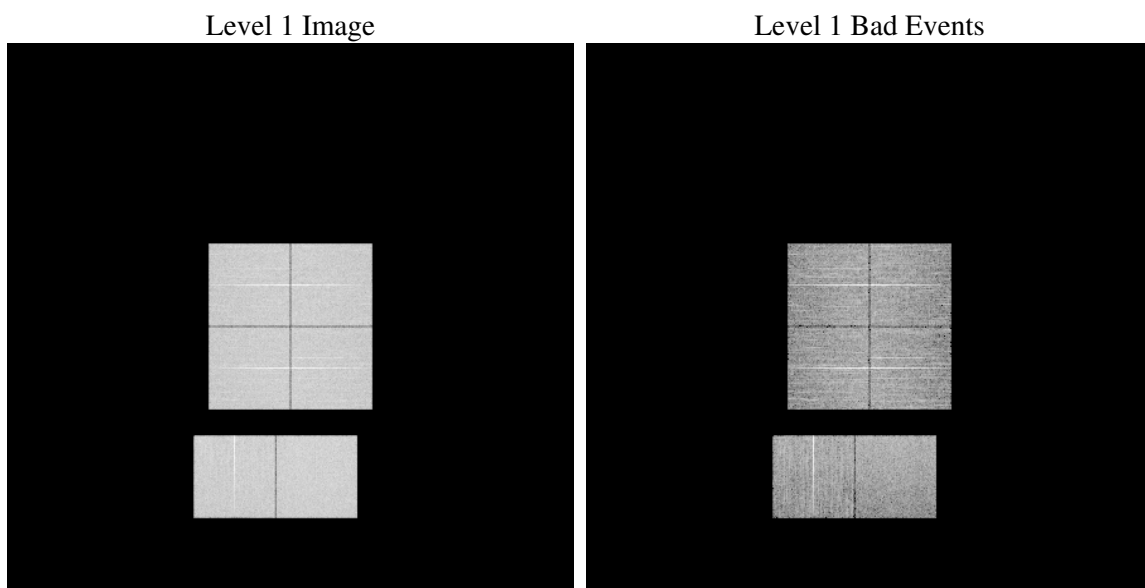
1 Front

seq_num	
obs_id	59338
title	ACIS-012367 diagnostics
observer	CHANDRA engineering request/realtime commanding
object	
dtcycle	0
cycle	P
ra_targ	0.0
dec_targ	0.0
ra_nom	30.979335823179
dec_nom	42.976061003976
roll_nom	206.92667303397
revision	2
ontime	7800.7184037566
livetime	7701.9410102995
ontime0	7768.3495209515
ontime1	7797.5594934821
ontime2	7703.6118446589
ontime3	7765.0264903009
ontime6	7800.88256374
ontime7	7800.7184037566
l2events	984186

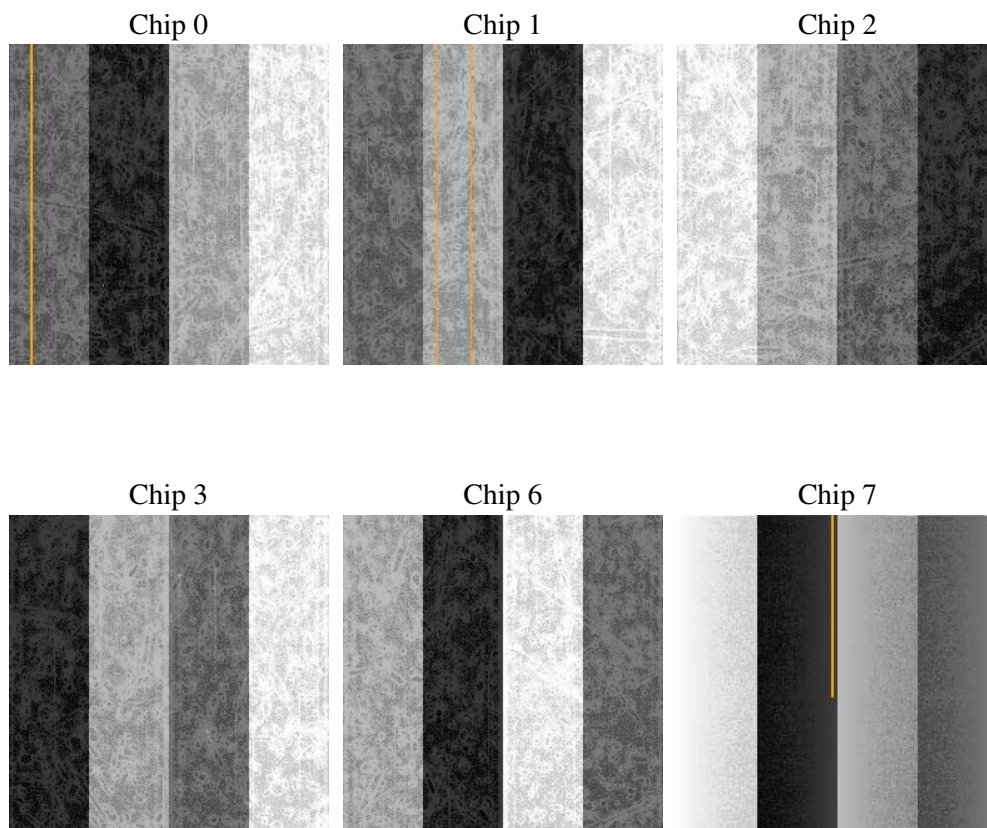
2 OBI

2.1 OBI

2.1.1 Images



2.1.2 Bias



2.1.3 Parameters

obi_num	0
ascdsver	7.6.7.1
caldbver	3.2.1
date	2006-04-05T15:29:49
revision	2

sched_exp_time	0.0
ontime	7801.1233097315
ontime0	7768.7133869231
ontime1	7797.8823194504
ontime2	7703.8936306238
ontime3	7765.4724362791
ontime6	7801.1233097315
ontime7	7801.1233097315
l1events	1398330

2.1.4 Events

	ccd 0	ccd 1	ccd 2	ccd 3	ccd 6	ccd 7
level 1 events	227422	228026	228738	230631	237862	245651
rejected events	59484	58367	60749	61307	61797	60515
rejected %	26%	25%	26%	26%	25%	24%

	ccd 0	ccd 1	ccd 2	ccd 3	ccd 6	ccd 7
grade 0 events	91782	91740	93795	94926	95142	29471
	40%	40%	41%	41%	39%	11%
grade 1 events	561	508	581	616	512	80
	0%	0%	0%	0%	0%	0%
grade 2 events	29739	30667	28244	28732	30501	56299
	13%	13%	12%	12%	12%	22%
grade 3 events	10963	10698	11143	11009	11034	12696
	4%	4%	4%	4%	4%	5%
grade 4 events	10749	10922	10970	11196	10953	12373
	4%	4%	4%	4%	4%	5%
grade 5 events	3380	3504	3209	3764	3835	6634
	1%	1%	1%	1%	1%	2%
grade 6 events	24705	25632	23837	23461	28435	74297
	10%	11%	10%	10%	11%	30%
grade 7 events	55543	54355	56959	56927	57450	53801
	24%	23%	24%	24%	24%	21%

2.2 Compared Parameters

Parameter	Planned	Actual	Parameter	Planned	Actual
Instrument	ACIS	ACIS	Obspar format version number	6	6
Detector	ACIS-012367	ACIS-012367	Obspar file type	PREDICTED	ACTUAL
Grating	NONE	NONE	Obspar update status	NONE	UPDATED
Data mode	FAINT	FAINT	On-chip summing requested	N	N
Observation mode	SECONDARY	SECONDARY	Subarray requested	NONE	NONE
Pointing RA	0	30.97933582317938	Alternating exposures requested	N	N
Pointing Dec	0	42.97606100397628	Primary exposure time	3.2	3.2
Pointing Roll	0.0	206.9266730339691			
SIM focus pos (mm)	-0.782348	-0.7809083437167272			
SIM defocus (mm)	0	0.7524282956875696			
SIM translation stage pos (mm)	-233.592463	250.466033080201			
SIM translation stage offset (mm)	0	-0.01005468664627074			
Observation start time	247870492.816209	247870491.79123			
Observation start date	2005-11-08T20:54:53	2005-11-08T20:54:51			
Observation end time	247889268.7671	247889267.74209			
Observation end date	2005-11-09T02:07:49	2005-11-09T02:07:47			
Read mode	TIMED	TIMED			

2.3 Aspect

2.4 Star Slots

2.5 FID Slots

A Summary

A.1 Status

V&V Scientist	Beth Sundheim
V&V Date (YYYY-MM-DD)	2006.04.05
V&V Edition	1
V&V Disposition and Status	OK
V&V Charge Time	7.8007184

A.2 Comments

Focal plane temperature is elevated throughout observation.