

# V&V Reference Report

## L2 ASCDS Version : 8.4.3

Observation 59298 - L2 Version 2  
Chandra X-Ray Center

L2 Processing Date : Mar 17 2012

## Contents

<b>1</b>	<b>Front</b>	<b>2</b>
<b>2</b>	<b>OBI</b>	<b>3</b>
2.1	OBI . . . . .	3
2.1.1	Images . . . . .	3
2.1.2	Bias . . . . .	3
2.1.3	Parameters . . . . .	4
2.1.4	Events . . . . .	4
2.2	Compared Parameters . . . . .	5
2.3	Star Slots . . . . .	6
2.4	FID Slots . . . . .	6
<b>A</b>	<b>Summary</b>	<b>7</b>
A.1	Status . . . . .	7
A.2	Comments . . . . .	7

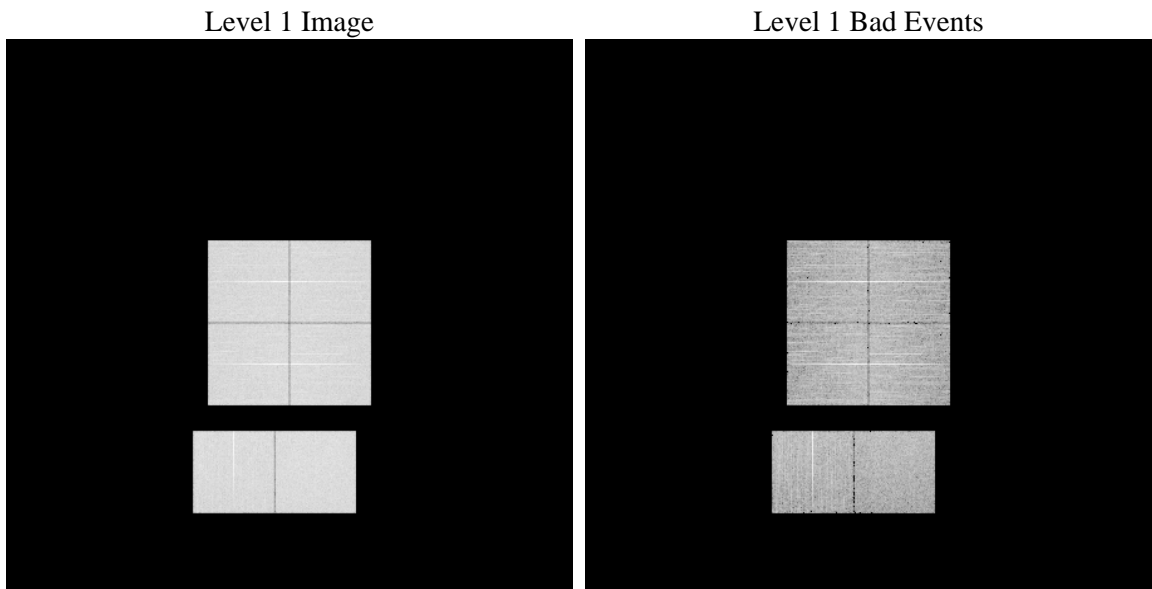
# 1 Front

seq_num	&#160	Sequence number
obs_id	59298	Observation id
title	ACIS-012367 diagnostics	Proposal title
observer	CHANDRA engineering request/realtime commanding	Principal investig
object	&#160	Source name
dtcycle	0	&#160
cycle	P	events from which exps? Prim/Second/Both
ra_targ	0.0	Observer's specified target RA [deg]
dec_targ	0.0	Observer's specified target Dec [deg]
ra_nom	76.304833104363	Nominal RA [deg]
dec_nom	0.22857202103819	Nominal Dec [deg]
roll_nom	46.240393508762	Nominal Roll [deg]
revision	2	Processing version of data
ontime	7801.5999709368	Sum of GTIs [s]
livetime	7702.8114145452	Livetime [s]
ontime0	7801.5999709368	Sum of GTIs [s]
ontime1	7801.5999709368	Sum of GTIs [s]
ontime2	7801.5999709368	Sum of GTIs [s]
ontime3	7801.5999709368	Sum of GTIs [s]
ontime6	7801.5999709368	Sum of GTIs [s]
ontime7	7801.5999709368	Sum of GTIs [s]
l2events	976825	Number of level 2 events

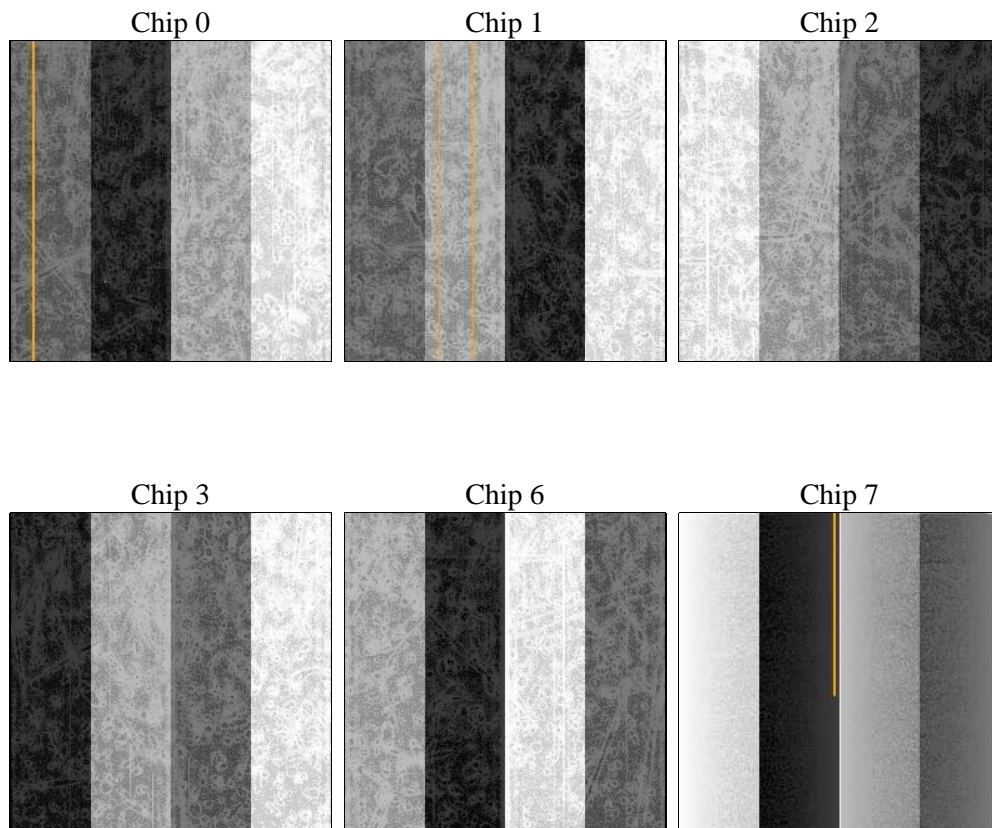
## 2 OBI

### 2.1 OBI

#### 2.1.1 Images



#### 2.1.2 Bias



### 2.1.3 Parameters

obi_num	0	Obi number	sched_exp_time	0.0	[s] Scheduled observation exposure time
ascdsver	8.4.3	Processing system revision	ontime	7801.5999709368	Sum of GTIs [s]
caldsver	4.4.8	&#160	ontime0	7801.5999709368	Sum of GTIs [s]
date	2012-03-17T02:43:38	Date and time of file creation	ontime1	7801.5999709368	Sum of GTIs [s]
revision	2	Processing version of data	ontime2	7801.5999709368	Sum of GTIs [s]
			ontime3	7801.5999709368	Sum of GTIs [s]
			ontime6	7801.5999709368	Sum of GTIs [s]
			ontime7	7801.5999709368	Sum of GTIs [s]
			l1events	1379869	Number of level 1 events

### 2.1.4 Events

	ccd 0	ccd 1	ccd 2	ccd 3	ccd 6	ccd 7		ccd 0	ccd 1	ccd 2	ccd 3	ccd 6	ccd 7
level 1 events	223088	222404	229076	228484	233996	242821	grade 0 events	90580	89581	93085	93544	93918	43990
rejected events	58516	57578	62211	61106	60618	51879		40%	40%	40%	40%	40%	18%
rejected %	26%	25%	27%	26%	25%	21%	grade 1 events	557	456	594	620	520	156
								0%	0%	0%	0%	0%	0%
							grade 2 events	28782	29619	28406	28808	30047	41386
								12%	13%	12%	12%	12%	17%
							grade 3 events	10758	10758	10827	11100	10937	18670
								4%	4%	4%	4%	4%	7%
							grade 4 events	10617	10740	10895	10958	10713	18834
								4%	4%	4%	4%	4%	7%
							grade 5 events	3390	3513	3162	3782	3762	8892
								1%	1%	1%	1%	1%	3%
							grade 6 events	23909	24203	23704	23034	27826	68137
								10%	10%	10%	10%	11%	28%
							grade 7 events	54495	53534	58403	56638	56273	42756
								24%	24%	25%	24%	24%	17%

## 2.2 Compared Parameters

Parameter	Planned	Actual	Parameter	Planned	Actual
Instrument	ACIS	ACIS	Obspar format version number	7	7
Detector	ACIS-012367	ACIS-012367	Obspar file type	PREDICTED	ACTUAL
Grating	NONE	NONE	Obspar update status	NONE	UPDATED
Data mode	FAINT	FAINT	On-chip summing requested	N	N
Observation mode	SECONDARY	SECONDARY	Subarray requested	NONE	NONE
[deg] Pointing RA	0	76.30483310436284	Alternating exposures requested	N	N
[deg] Pointing Dec	0	0.2285720210381858	[s] Primary exposure time	3.2	3.2
[deg] Pointing Roll	0.0	46.24039350876204			
[mm] SIM focus pos	-0.782348	-0.7809083437167272			
[mm] SIM defocus	0	0.7524282956875696			
[mm] SIM translation stage pos	-233.592463	250.466033080201			
[mm] SIM translation stage offset	0	-0.01005468664627074			
[s] Observation start time (MET)	248784760.058424	248784759.03344			
Observation start date	2005-11-19T10:52:40	2005-11-19T10:52:39			
[s] Observation end time (MET)	248808205.90952	248808204.88452			
Observation end date	2005-11-19T17:23:26	2005-11-19T17:23:24			
Read mode	TIMED	TIMED			

## **2.3 Star Slots**

## **2.4 FID Slots**

## A Summary

### A.1 Status

V&V Scientist	Beth Sundheim
V&V Date (YYYY-MM-DD)	2012.03.18
V&V Edition	1
V&V Disposition and Status	OK
V&V Charge Time	7.8015999709368

### A.2 Comments